
Vortex Cotes's spiral in an extratropical cyclone in the southern coast of Brazil

Ricardo Gobato^{1,*}, Alireza Heidari², Abhijit Mitra³ and Marcia Regina Risso Gobato¹

¹Green Land Landscaping and Gardening, Seedling Growth Laboratory, 86130-000, Parana, Brazil.

²Faculty of Chemistry, California South University, 14731 Comet St. Irvine, CA 92604, USA, United States of America.

³Department of Marine Science, University of Calcutta, 35 B.C. Road Kolkata, 700019, India.

* Corresponding author: ricardogobato@seed.pr.gov.br; ricardogobato@gardener.com

October 9, 2020

An “explosive extratropical cyclone” is an atmospheric phenomenon that occurs when there is a very rapid drop in central atmospheric pressure. This phenomenon, with its characteristic of rapidly lowering the pressure in its interior, generates very intense winds and for this reason it is called explosive cyclone, “cyclone bomb” CB. It was determined the mathematical equation of the shape of the extratropical cyclone, being in the shape of a spiral called “Cotes’s Spiral.” In the case of CB, which formed in the south of the Atlantic Ocean, and passed through the south coast of Brazil in July 2020, causing great damages in several cities in the State of Santa Catarina, Southern Brazil. With gusts recorded of 116 km/h, atmospheric phenomenon – CB hit southern Brazil on June 30, the beginning of winter 2020, causing destruction in its influence over. In five hours the CB traveled a distance of 257.48 km (159.99 miles), at an average speed of 51.496 km/h (31.998 miles/h) 27.81 knots, moved towards ENE, with a low pressure center of 986 mbar, 07:20 UTC, approximate location 35°S 45°W, and 5 hours after 12:20 UTC had already grown and had a low pressure center of 972 mbar, approximate location 34°S 42°30’W. The temperatures of the clouds and the surface near the low pressure center of the CB. The temperature in the center of the CB is approximately 45°C at 07:20 UTC, July 1, 2020. Five hours later, at 12:20 UTC, in the low pressure center of the CB, the temperature varies from 45°C to -30°C, indicat-

ing that the CB increases in size and further tapers its core, sucking a great amount of steam to high altitudes of water where it condenses quickly.

1 Introduction

With winds of 100 km/h “explosive extratropical cyclone” left a trail of destruction in Santa Catarina, Paraná and Rio Grande do Sul, Southern Brazil on Tuesday, June 30, 2020. The phenomenon known as the “cyclone bomb” caused heavy rains, where gusts of wind destroyed houses, caused tree falls, debris and the destruction of the energy network, [9] main Chapecó located 27°06’17”S 52°36’51”W, Santa Catarina, Southern Brazil [10], was the most affected by cyclone.

Tropical cyclones are compact, circular storms, generally some 320 km (200 miles) in diameter, whose winds swirl around a central region of low atmospheric pressure. The winds are driven by this low-pressure core and by the rotation of the Earth, which deflects the path of the wind through a phenomenon known as the Coriolis force. As a result, tropical cyclones rotate in a counterclockwise (or cyclonic) direction in the Northern Hemisphere and in a clockwise (or anticyclonic) direction in the Southern Hemisphere. [9, 11-15]

The occurrence of cyclones is relatively common for the region at this time of year, but the recent phenomenon has been exacerbated by other meteorologi-

cal and atmospheric factors. This phenomenon, with this feature to lower the pressure inside quickly generates very strong winds and so that name of explosive cyclones. [5-9] For large-scale occurs, the tropical cyclones influence and are influenced by the weather and other atmospheric phenomena point of view, the call synoptic condition. A very intense circulation of heat and humidity from the North region, with emphasis on the Amazon and Bolivia, increased the occurrence of the cyclone more sharply, reaching Paraguay, Uruguay and northern Argentina, as well as the south-Brazilian coast. [15-21]

In mathematics, a spiral is a curve which emanates from a point, moving farther away as it revolves around the point. [1-4] The characteristic shape of hurricanes, cyclones, typhoons is a spiral [5-8]. There are several types of turns, and determining the characteristic equation of which spiral the "cyclone bomb" (CB) [9] fits into is the goal of the work.

The Synoptic Letters, from July 1, 2020, at 00:00 UTC and 12:00 UTC, respectively, from Navy Hydrography Center, Brazil's navy [22], show the CB generated a low pressure 976 mbar inside it, 12:00 UTC, generating two atmospheric currents that moved at high speed. In a northwest-southeast direction, Bolivia and Paraguay, crossing the states of Parana and Santa Catarina, and this draft that hit the south of Brazil, which caused the destruction of the affected states. Another moving to Argentina, southwest-northeast direction, due to high area of high pressure (1022 mbar). Both enhanced the phenomenon.

As stated in the introduction the characteristic shape of hurricanes, cyclones, typhoons is a spiral. [1-4] There are several types of turns, and determining the characteristic equation of which spiral the CB fits into is the goal of the work. In mathematics, a spiral is a curve which emanates from a point, moving farther away as it revolves around the point. After an analysis of the different types of spirals, it was found that the shape that came closest to the CB spiral, Figure (1), is a "Cotes's Spiral". It was determined the mathematical equation of the shape of the extratropical cyclone, being in the shape of a spiral called "Cotes's Spiral".

2 "Cotes's Spiral" and Conclusions

After an analysis of the different types of spirals [24-31], it was found that the shape that came closest to the CB spiral, Figure (1), is a "Cotes's Spiral." [26] It was determined the mathematical equation of the shape of the extratropical cyclone, being in the shape of a spiral called "Cotes's Spiral" [24-26]

A spiral that gives the solution to the central orbit problem under a radial force law

$$\ddot{r} = -\mu[r]^{-3}\hat{r} \quad (1)$$

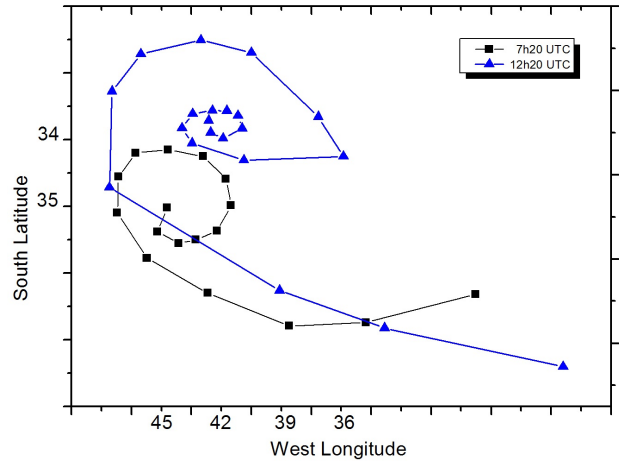


Figure 1: It represents the coordinates of the points collected from Figure (1), in Longitude and Latitude, using the Isobaric [30-31] found in Figures (2) and (3). [Authors]

where μ is a positive constant. There are three solution regimes,

$$r = A \sec(k\theta + \epsilon),$$

where $k^2 = 1 - \frac{\mu}{h^2}$, when $\mu < h^2$

$$r = A \csc(k'\theta + \epsilon),$$

where $k^2 = \frac{\mu}{h^2} - 1$, when $\mu > h^2$

$$r = \frac{A}{\theta + \epsilon} \quad (2)$$

when $\mu = h^2$

where A and ϵ are constants, and h is the specific angular momentum [26]. The case $\mu > h^2$ gives an epispiral, while $\mu = h^2$ leads to a hyperbolic spiral.

Analyzing the shape of the Spiral shape called "Cotes's Spiral." for $\mu < h^2$. [24, 25], it appears that adding two constants to Equation (3) makes the necessary adjustments for the Isobaric ones. In the case of CB, the spiral that gives the solution to a radial force law is given by Equation (1): $\ddot{r} = -\mu[r]^{-3}\hat{r}$; where:

$$r = A \sec(k\theta + \epsilon),$$

where

$$k^2 = 1 - \frac{\mu}{h^2}, \quad (3)$$

when $\mu < h^2$

An adjustment in Equation (3) is necessary to obtain the graph of Figure (5). Then, adding the constants $B \neq 0$ and C where for $\mu < h^2$.

$$r = BA \sec(k\theta + \epsilon) + C, \quad (4)$$

where

$$k^2 = 1 - \frac{\mu}{h^2}, \quad (5)$$

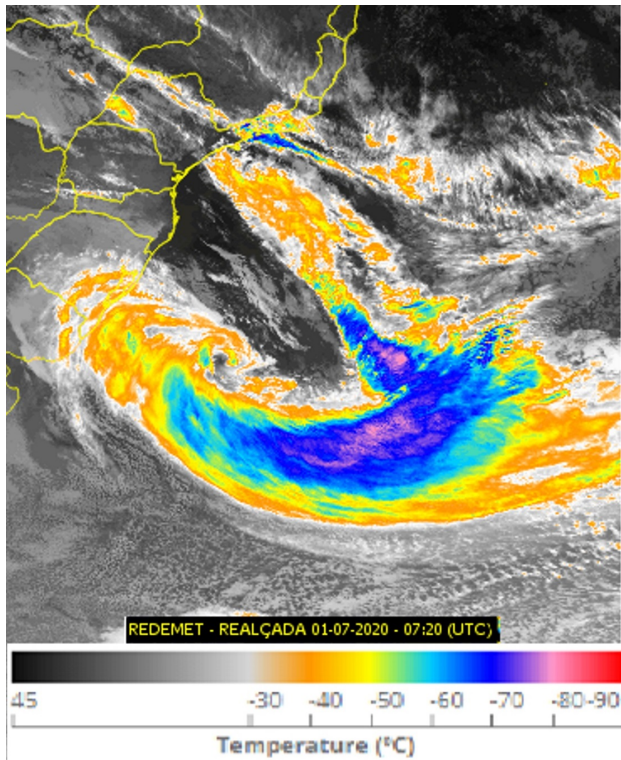


Figure 2: Image of the CB moving to the Atlantic Ocean. Enhanced image of cloud temperature, July 1, 2020, 07:20 UTC, REDEMET. (Adapted) [23, Authors]

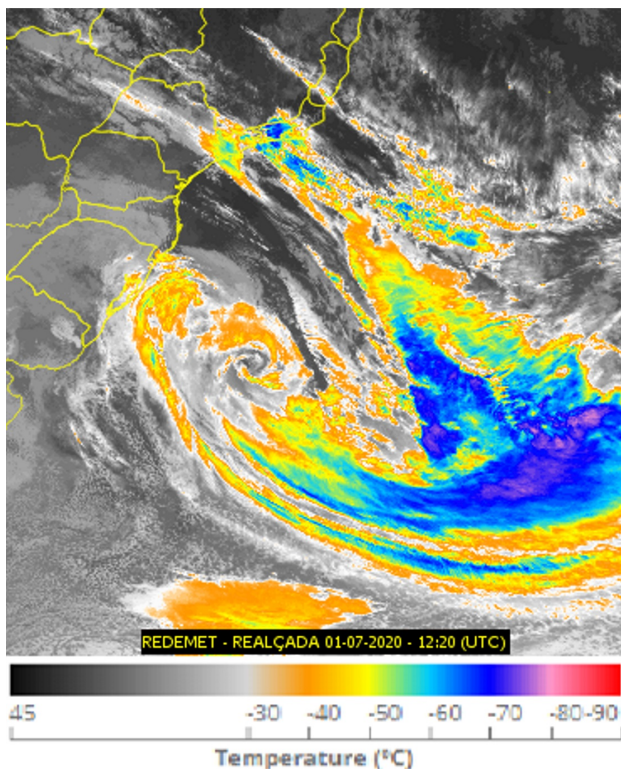


Figure 3: Image of the CB moving to the Atlantic Ocean. Enhanced image of cloud temperature, July 1, 2020, 12:20 UTC, REDEMET. (Adapted) [23, Authors]

when $\mu < h^2$

The data of the of the points coordinates collected from Figure (1), in Longitude and Latitude, They were obtained [22, 23, 30, 31]. With the location of the low pressure center (986 mbar) of the CB at 35°S 45°W, at 07:20 UTC, and the low pressure center (972 mbar) of the CB at 35°S 42°30'W, at 12:20 UTC, Figures (1) and (2). In this Figure (5) the shape of the CB is represented, using as a parameter the isobaric ones observed in Figures (1) and (2).

The Figures (2) and (3) show the temperatures of the clouds and the surface near the low pressure center of the CB. The temperature in the center of the CB is approximately 45°C at 07:20 UTC, July 1, 2020, Figure (2). Five hours later, at 12:20 UTC, in the low pressure center of the CB, the temperature varies from 45°C to -30°C, Figure (3), indicating that the CB increases in size and further tapers its core, sucking a great amount of steam to high altitudes of water where it condenses quickly.

An “explosive extratropical cyclone” is an atmospheric phenomenon that occurs when there is a very rapid drop in central atmospheric pressure. This phenomenon, with its characteristic of rapidly lowering the pressure in its interior, generates very intense winds and for this reason it is called explosive cyclone, CB [5-9]. It was determined the mathematical equation of the shape of the extratropical cyclone, being in the shape of a spiral called "Cotes's Spiral." In the case of CB, which formed in the south of the Atlantic Ocean, and passed through the south coast of Brazil in July 2020, causing great damages in several cities in the State of Santa Catarina.

With gusts recorded of 116 km/h, atmospheric phenomenon – CB hit southern Brazil on June 30, the beginning of winter 2020, causing destruction in its influence over. In five hours the CB traveled a distance of 257.48 km (159.99 miles), at an average speed of 51.496 km/h (31.998 miles/h) 27.81 knots, moved towards ENE, with a low pressure center of 986 mbar, 07:20 UTC, approximate location 35°S 45°W, and 5 hours after 12:20 UTC had already grown and had a low pressure center of 972 mbar , approximate location 34°S 42°30'W.

The temperatures of the clouds and the surface near the low pressure center of the CB. The temperature in the center of the CB is approximately 45°C at 07:20 UTC, July 1, 2020. Five hours later, at 12:20 UTC, in the low pressure center of the CB, the temperature varies from 45°C to -30°C, indicating that the CB increases in size and further tapers its core, sucking a great amount of steam to high altitudes of water where it condenses quickly.

References

[1] Donald L. Vossler. “Exploring Analytical Geometry with Mathematica”, Academic Press, 1999. ISBN:

9780127282558,0127282556.

[2] John Casey. "A treatise on the analytical geometry of the point, line, circle, and conic sections, containing an account of its most recent extensions, with numerous examples", University of Michigan Library, 2001. ISBN: 1418169897,9781418169893.

[3] Ruslan Sharipov. "Course of Analytical Geometry", Bashkir State University (Russian Federation). ISBN: 978-5-7477-2574-4.

[4] M. de León, P.R. Rodrigues "Methods of Differential Geometry in Analytical Mechanics", Series: Mathematics Studies. Elsevier Science Ltd, 1989. ISBN: 0444880178,9780444880178.

[5] Tim Vasquez. "Weather Forecasting Handbook" (5th Edition), Weather Graphics Technologies, 2002. ISBN: 0970684029,9780970684028.

[6] Marius Paulescu, Eugenia Paulescu, Paul Gravila, Viorel Badescu. "Weather Modeling and Forecasting of PV Systems Operation", Series: Green Energy and Technology, Springer, 2012. ISBN: 1447146484,9781447146483.

[7] Howard B. Bluestein, Lance F. Bosart, Howard B. Bluestein (eds.). "Synoptic—Dynamic Meteorology and Weather Analysis and Forecasting: A Tribute to Fred Sanders", Series: Meteorological Monographs 33, No. 55. American Meteorological Society, 2008. ISBN: 978-1-878220-84-4,978-0-933876-68-2.

[8] Patrick Santurette, Christo Georgiev. "Weather Analysis and Forecasting: Applying Satellite Water Vapor Imagery and Potential Vorticity Analysis", Academic Press, 2005. ISBN: 0126192626,9780126192629,9780080455266.

[9] Ricardo Gobato, Alireza Heidari. "Cyclone Bomb Hits Southern Brazil in 2020, Journal of Atmospheric Science Research", V.3, n.3, July 2020. <https://doi.org/10.30564/jasr.v3i3.2163>

[10] Chapecó. Creative Commons. CC BY-SA 3.0. <https://creativecommons.org/licenses/by-sa/3.0/> Available in: September 5, 2020. URL: <https://en.wikipedia.org/wiki/Chapec%C3%B3>

[11] John P. Rafferty. Storms, Violent Winds, and Earth's Atmosphere. Series: Dynamic Earth. Britannica Educational Publishing, Year: 2010. ISBN: 1615301143,9781615301140,1615301887, 9781615301881.

[12] Krasny, R. 1986, A study of singularity formation in a vortex sheet by the point vortex approximation, J. Fluid Mech. 167, 65-93.

[13] P. G. Saffman, "Vortex dynamics. Series: Cambridge monographs on mechanics and applied mathematics", First Edition, Cambridge University Press. 1992.

[14] M. A. Sokolovskiy, J. Verron, "Four-vortex motion in the two layer approximation - integrable case", RXD. 2000.

[15] R. Gobato, A. Gobato, D. F. G. Fedrigo, "Study of tornadoes that have reached the state of Parana". Parana J. Sci. Educ., 2 (1): 1–27, 2016. doi.org/10.5281/zenodo.3783851. URL: <https://sites.google.com/site/pjsienciaa/2016/january-v-2-n-1>.

[16] E. T. Whittaker, Sir William McCrae. "Treatise on analytical dynamics of particles and rigid bodies", Cambridge Mathematical Library, Cambridge University Press, 1989. ISBN: 0521358833,9780521358835.

[17] A. P. Crosta, "Processamento digital de imagens de sensoriamento remoto". Campinas: IG/UNICAMP. 170 p, 1992.

[18] R. Gobato, M. Simões F., "Alternative method of RGB channel spectroscopy using a CCD reader", Ciência e Natura, 39 202-210, 2017. DOI:10.5902/2179460X25617.

[19] Joseph J. George. "Weather Forecasting for Aeronautics", Elsevier Inc, 1960. ISBN: 978-1-4832-3320-8.

[20] Stan Yorke. "Weather Forecasting Made Simple", Series: Countryside Books Reference. Countryside Books, 2010. ISBN: 1846741971,9781846741975.

[21] John David Anderson. "Fundamentals of Aerodynamics", McGraw-Hill Companies, 1984. ISBN: 9780070016569,0070016569.

[22] Navy Hydrography Center. Brazil's navy. Synoptic Letters. Available in: September 9, 2020. URL: https://www.marinha.mil.br/chm/dados-do-smm-cartas-sinoticas/cartas-sinoticas?field_data_value%5Bvalue%5D%5Bday%5D=1&field_data_value%5Bvalue%5D%5Bmonth%5D=6&field_data_value%5Bvalue%5D%5Byear%5D=2020&field_horario_value=12HMG

[23] REDEMETS, Rede de Meteorologia do Comando da Aeronáutica, 2020: GT-REDEMETS, Imagens de Satélite, July 1, 2020, Available in: September 6, 2020, URL: <https://www.redemet.aer.mil.br/index.php?i=produtos&p=imagens-de-satelite>

[24] Weisstein, Eric W. "Cotes's Spiral." From MathWorld—A Wolfram Web Resource. Available in: September 14, 2020 URL: <https://mathworld.wolfram.com/CotesSpiral.html>

[25] Whittaker, E. T. *A Treatise on the Analytical Dynamics of Particles and Rigid Bodies: With an Introduction to the Problem of Three Bodies*. New York: Dover, p. 83, 1944.

[26] Fischer R. "Fibonacci Applications and Strategies for Traders: Unveiling the Secret of the Logarithmic Spiral", 1993. ISBN: 0471585203, 9780471585206.

[27] Alar Toomre. "Theories of Spiral Structure", *Annual Review of Astronomy and Astrophysics* 15(1):437-478 DOI: 10.1146/annurev.aa.15.090177.002253.

[28] J. H. Oort (auth.), W. Becker, G. Contopoulos (eds.). "The Spiral Structure of Our Galaxy", Series: *International Astronomical Union / Union Astronomique Internationale* 38, Springer Netherlands, Year: 1970. ISBN: 978-94-010-3277-3, 978-94-010-3275-9

[29] Mikhail V. Nezlin, Evgenii N. Snezhkin. "Rossby Vortices, Spiral Structures, Solitons: Astrophysics and Plasma Physics in Shallow Water Experiments", Series: *Springer Series in Nonlinear Dynamics*, Springer-Verlag Berlin Heidelberg, 1993. ISBN: 978-3-642-88124-4, 978-3-642-88122-0

[30] Gobato, Ricardo; Heidari, Alireza; Mitra, Abhijit and Gobato, Marcia Regina Risso, "Cotes's Spiral Vortex in Extratropical Cyclone bomb South Atlantic Oceans". DOI: 10.13140/RG.2.2.12778.95683. https://www.researchgate.net/publication/344322304_Cotes's_Spiral_Vortex_in_Extratropical_Cyclone_bomb_South_Atlantic_Oceans

[31] Ricardo Gobato, Alireza Heidari, Abhijit Mitra, Marcia Regina Risso Gobato. "Cotes's Spiral Vortex in Extratropical Cyclone bomb South Atlantic Oceans", 2020-09-20, <https://vixra.org/abs/2009.0144>