

# Detecting a Valve Spring Failure of a Piston Compressor with the Help of the Vibration Monitoring.

Andrei Keino

TIK, Maria Zagumennykh st., 14 A, Perm, 614067, Russian Federation,  
tik@perm.ru, andreikeino@gmail.com

**Abstract**—The article presents problems related to vibration diagnostics in reciprocating compressors. This paper presents the evaluation of several techniques of the digital signal processing, such as the spectrum calculation with the Discrete Fourier Transform (DFT), Continuous Wavelet Transform (CWT), Segmented Analysis for detection the spring failure in reciprocating compressor valve with the help of the vibration monitoring. The experimental investigation to collect the data from the compressor with both the faultless valve and the valve with spring failure was conducted. Three 112DV1 vibration acceleration probes manufactured by TIK were mounted on the cylinder of the compressor. The keyphasor probe was mounted on the compressor’s flywheel. The signal of the vibration acceleration probe mounted on the top of the cylinder was used for the Condition Monitoring and Fault Detection of the valve. The TIK-RVM system of monitoring and data acquisition was used for gathering the signal samples from the probes. The sampling frequency was 30193.5 Hz, signal length was 65535 samples. To imitate the spring fault, the exhaust valve spring was replaced by the shortened one with the same stiffness. As it can be seen from the signal processing results in the article, the techniques used are showing quite different results for the cases of the normal valve spring and the short one. It seems what for this type of the compressor and valve, the valve spring failure can be quite reliably detected with the help of the vibration monitoring. To see if this is a case for other compressor types and other valve types, the additional experiments are needed.

## TABLE OF CONTENTS

INTRODUCTION.....	1
THE EXPERIMENTAL DESIGN .....	1
CONDITION MONITORING AND FAULT DETECTION TECHNIQUES .....	1
THE RESULTS OF THE SIGNAL PROCESSING .....	3
REFERENCES .....	7

## INTRODUCTION.

Techniques for machinery condition monitoring and diagnostics are being used widely in industry with applications in automation, predictive maintenance and quality control. One of the most widely used techniques is based on vibration analysis. A variety of different techniques for processing vibration signals have been proposed and have proven to be effective in condition monitoring and diagnostics of different kinds of machinery [1], [2], etc. Research into condition monitoring as a maintenance tool has led to the development of many fault detection, diagnosis, and prediction techniques [3]. In this paper several methods of digital signal processing, such as signal spectrum, Continuous Wavelet Transform (CWT), Segmented Analysis has been evaluated for their ability to diagnose the spring failure in the piston compressor’s valve.

## THE EXPERIMENTAL DESIGN

C416M compressor has been used for experiments. Rotation frequency was 9.2 Hz. The original cylinder head of the compressor has been replaced with specially manufactured one. Inlet and outlet of one compressor’s cylinder were plugged, the valves were mounted on the other cylinder. Three 112DV1 vibration acceleration probes manufactured by TIK were mounted on the cylinder of the compressor. The keyphasor probe was mounted on the compressor’s flywheel. The signal of the vibration acceleration probe mounted on the top of the cylinder was used for the Condition Monitoring and Fault Detection of the valve. The TIK-RVM system of monitoring and data acquisition was used for gathering the signal samples from the probes. The sampling frequency was 30193.5 Hz, signal length was 65535 samples.

To imitate the spring fault, the exhaust valve spring was replaced by the shortened one with the same stiffness. The photos of experimental setup, valve and springs are shown in the figures 1, 2, 3.

## CONDITION MONITORING AND FAULT DETECTION TECHNIQUES

### Continuous Wavelet Transform (CWT)

**Definition**—The continuous wavelet transform of a discrete sequence  $x_n$  is defined as the convolution of  $x_n$  with a scaled and translated version of normalized wavelet function [4].

$$W_n(s) = \sum_{n'=0}^{N-1} x_n \psi^* \left( \frac{(n' - n)\delta t}{s} \right)$$

Here  $W_n(s)$  is wavelet transform function,  $\psi$  - wavelet function, the  $(*)$  indicates the complex conjugate,  $s$  is the scale,  $\delta t$  is the time step.

By varying the wavelet scale  $s$  and translating along the localized time index  $n$ , one can construct a picture showing both the amplitude of any features versus the scale and how this amplitude varies with time.

**Wavelet power spectrum and global wavelet spectrum**—Because the wavelet function is in general complex, the wavelet transform function is also complex. To avoid the ambiguity in the complex phase, the square of the modulus of the wavelet function or power spectrum can be used for the calculation and estimates. The time-averaged wavelet power spectrum over a certain period can be useful also. Averaging the wavelet power spectrum over all the time period will give the global wavelet spectrum

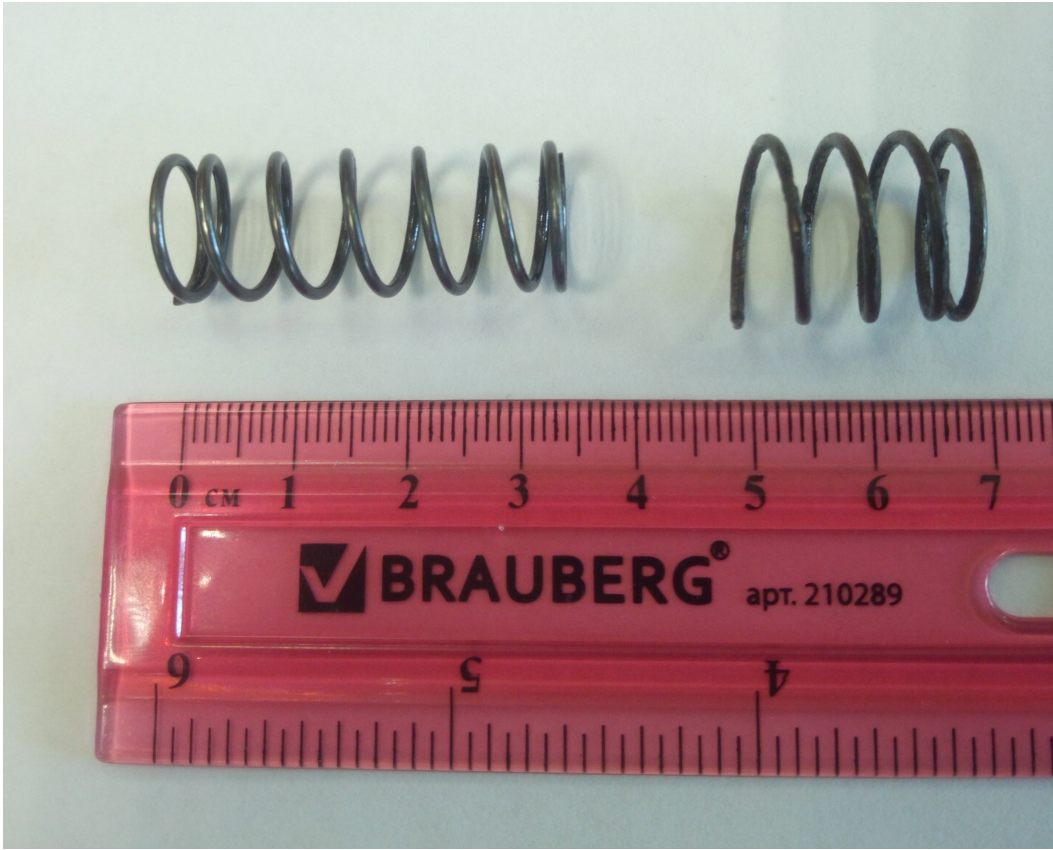
$$\overline{W}^2(s) = \frac{1}{N} \sum_{n=0}^{N-1} |W_n(s)|^2$$



**Figure 1.** The compressor. The signal used for the fault detection monitoring was acquired from vibration acceleration probe mounted on the top of the cylinder.



**Figure 2.** The exhaust valve.



**Figure 3.** The normal and the short springs.

Here  $\overline{W}^2(s)$  is the global wavelet spectrum,  $W_n(s)$  is wavelet transform function,  $N$  is the sample count.

*Wavelet scale and Fourier frequency*—Following the method described in [5] the relationship between the equivalent Fourier period and the wavelet scale can be derived analytically for a particular wavelet function by computing the scale at which the wavelet power spectrum reaches its maximum.

*The Morlet wavelet*—The wavelet function for Morlet wavelet given by

$$\psi(\eta) = \pi^{-\frac{1}{4}} e^{i\omega_0\eta} e^{-\frac{\eta^2}{2}}$$

Fourier period for Morlet wavelet given by

$$\lambda = \frac{4\pi s}{\omega_0 + \sqrt{2} + \omega_0}$$

where  $\omega_0$  is the non-dimensional frequency, here taken to be 6 to satisfy the admissibility condition [6].

#### *Segmented Analysis*

Segmented analysis was based on a method mentioned in [7]. To perform segmented analysis the acquired signal was filtered with the bandpass Butterworth filter with the passband 7096 - 8941 Hz to filter out the low - frequency background. Then filtered signal was fragmented to the parts corresponding to one shaft rotation between two adjacent top dead centre (TDC) positions. The locations of TDC were determined with the help of the keyphasor signal. After this, the absolute value of the signal has been averaged by the realizations of the shaft rotation. Then the averaged signal

was divided in 10 equal bins, 36 arc degree each. The value of each bin was calculated as the mean of the absolute value of the bin signal.

### **THE RESULTS OF THE SIGNAL PROCESSING**

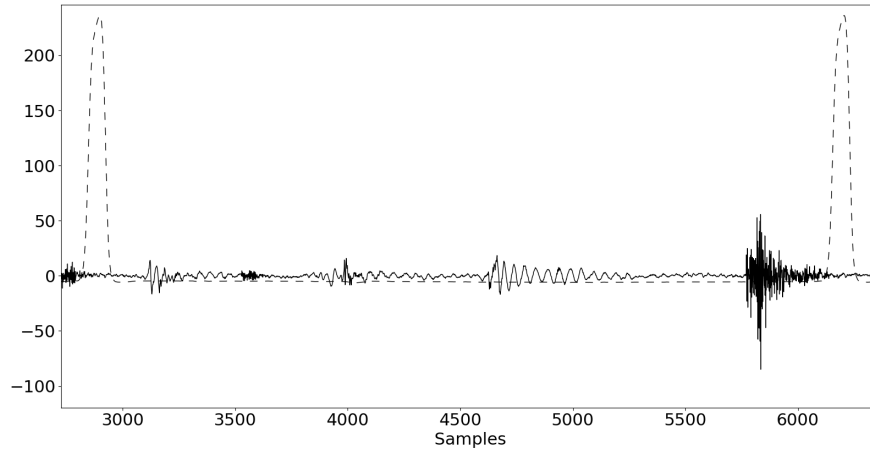
The part of the signal corresponding to one turnout for the normal and the short spring are shown in Figures 4 and 5. This is easy to see, what the signal with the short spring have more powerful high - frequency outbursts than the signal for the normal spring, possibly due to the valve rattling at the moment of the closing of the valve due to the spring failure.

The spectrum of the signal for the normal and the short spring are shown in Figures 6 and 7. The spectrum of the signal for the spring failure have large peak at the high frequency (about 11500 Hz).

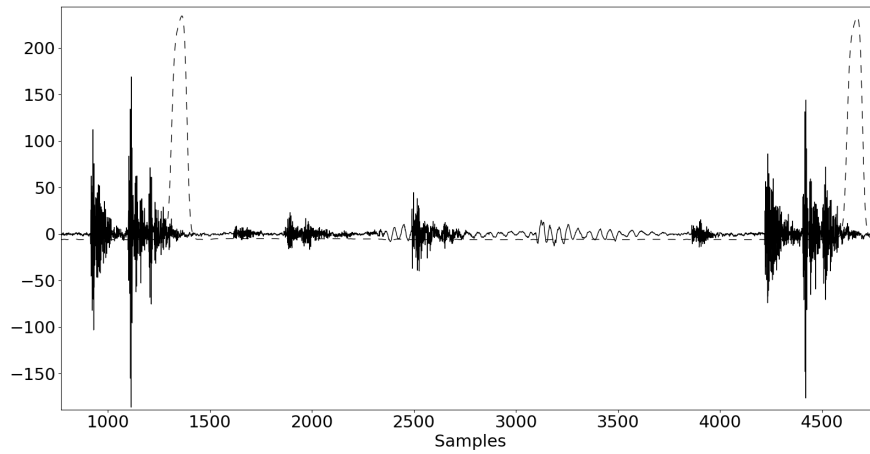
The global wavelet spectrum of the signal for the normal and the short spring are shown in Figures 8 and 9. The global wavelet spectrum of the signal for the spring failure have large peak at the high frequency (also about 11500 Hz).

The segmented analysis of the signal for the normal and the short spring are shown in Figure 10. As it can be seen from this figure, some of the bin values are quite different for the different spring conditions.

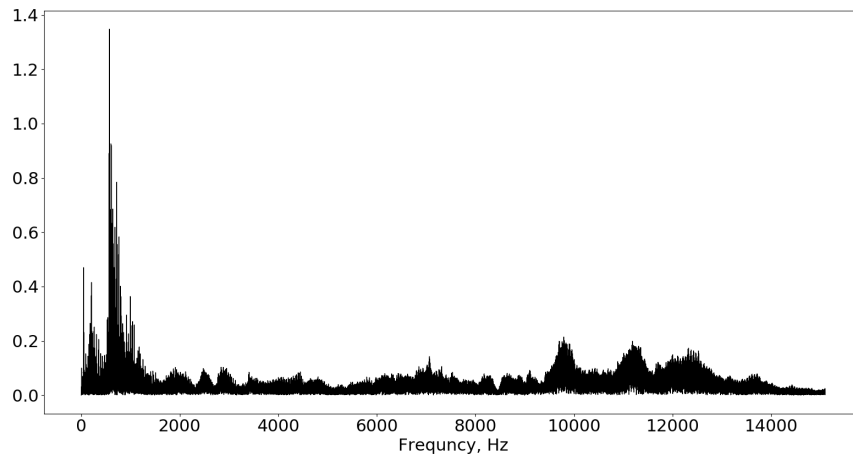




**Figure 4.** A part of the vibration acceleration signal (solid line) and the keyphasor signal (dashed line) corresponding to one shaft rotation. The normal spring is mounted on the exhaust valve.

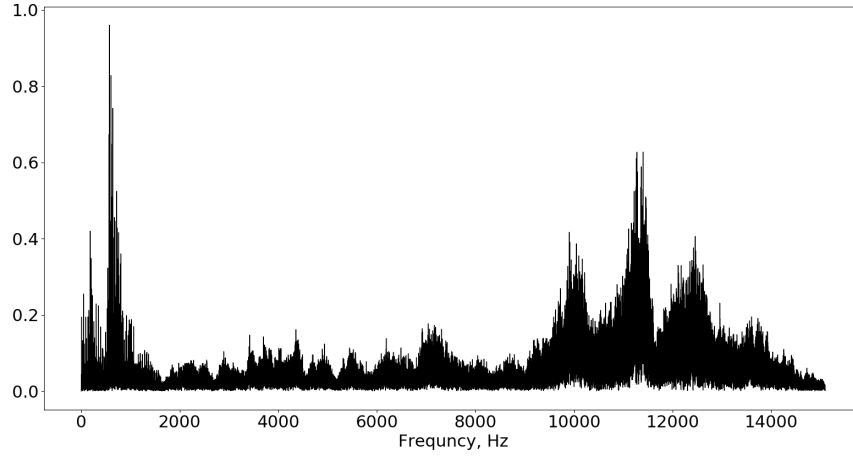


**Figure 5.** A part of the vibration acceleration signal (solid line) and the keyphasor signal (dashed line) corresponding to one shaft rotation. The short spring is mounted on the exhaust valve.

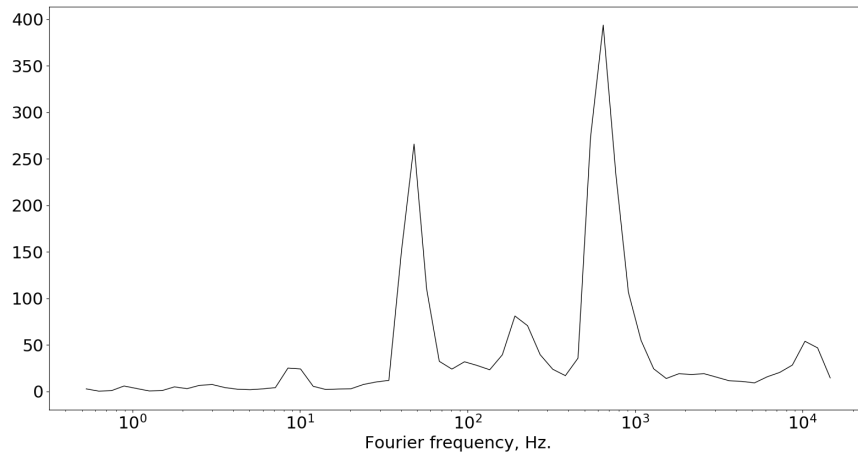


**Figure 6.** Spectrum of the signal. The normal spring is mounted on the exhaust valve.

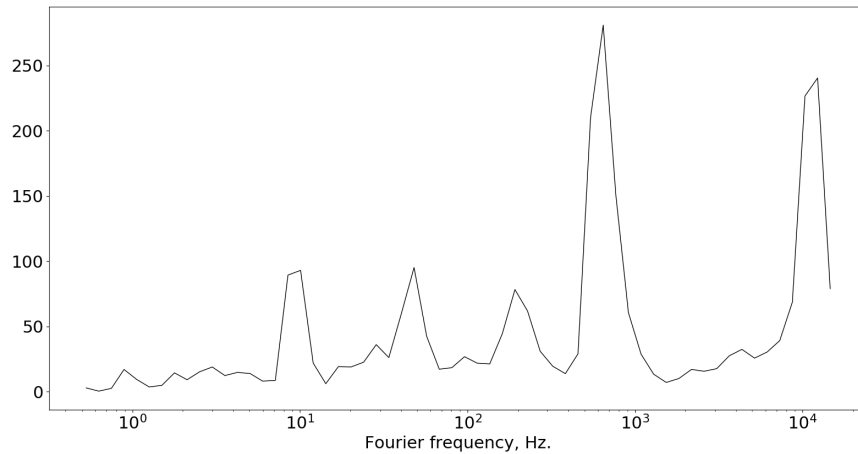




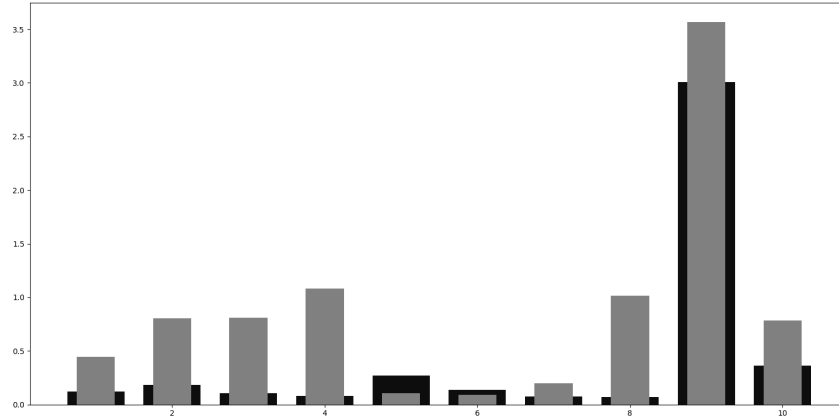
**Figure 7.** Spectrum of the signal. The short spring is mounted on the exhaust valve.



**Figure 8.** Wavelet global spectrum of the signal. The Morlet wavelet with  $\omega_0 = 6$  used. The normal spring is mounted on the exhaust valve.



**Figure 9.** Wavelet global spectrum of the signal. The Morlet wavelet with  $\omega_0 = 6$  used. The short spring is mounted on the exhaust valve.



**Figure 10.** The segmented analysis results. The black bins corresponds to the normal spring is mounted on the exhaust valve, the gray bins corresponds to the short one.

*The classification of the segmented analysis of the signal samples with the Decision Tree algorithm*

The case of the spring failure can be detected using only the segmented analysis. For this purpose 10 signal samples for both the normal spring and the short one were processed to get some comparative meaning. The bin values of the segments was normalized with the Euclidean norm, i.e for each signal sample each of the segment value was divided by the square root of the sum of squares of all the segment values of the sample signal. The results shown in a Figure 12.

As it can be seen from this figure, the bins number 1, 2, 3, 4, 8 can be effectively used to distinguish the test cases.

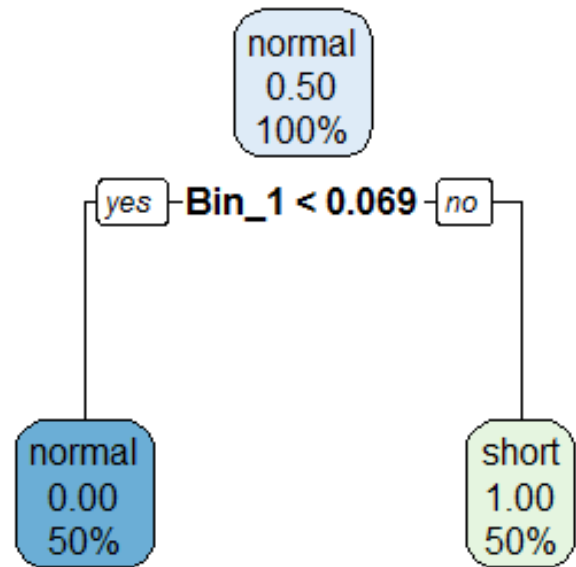
Also It can be helpful to perform classification with the help of the one of classification algorithm. The Decision Tree Classifier was chosen as the classification algorithm because its results are very easy to interpret. The result of the application of the Decision Tree on the data shown in the Figure 12 are following:

Node number 1: 20 observations, complexity param=1  
 predicted class=normal expected loss=0.5 P(node) =1  
 class counts: 10 10  
 probabilities: 0.500 0.500

Node number 2: 10 observations  
 predicted class=normal expected loss=0 P(node) =0.5  
 class counts: 10 0  
 probabilities: 1.000 0.000

Node number 3: 10 observations  
 predicted class=short expected loss=0 P(node) =0.5  
 class counts: 0 10  
 probabilities: 0.000 1.000

Misclassification error rate: 0 = 0 / 20

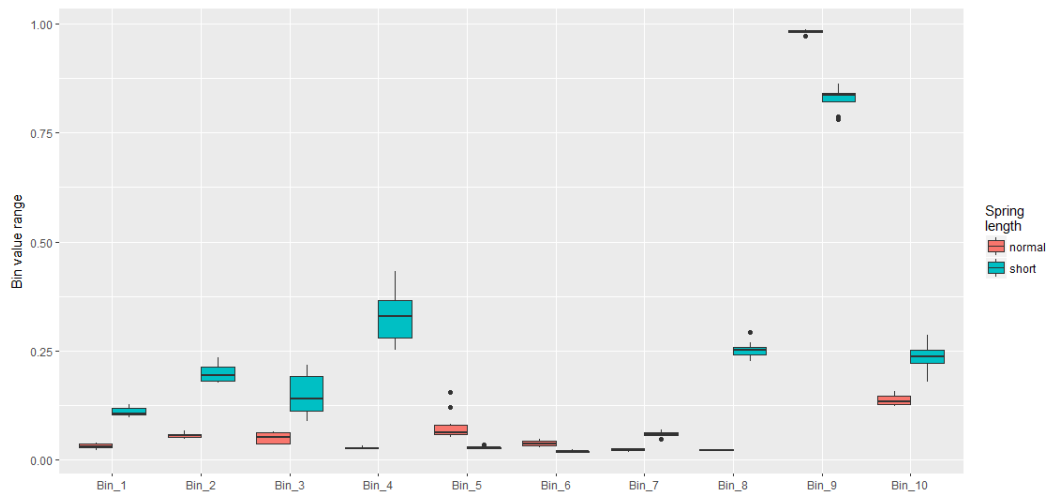


**Figure 11.** Scheme of the Decision Tree built from the data samples.

The plot of the resulting tree shown in the Figure 11. As it can be seen from this plot, the algorithm actually uses just one predictor - namely the value of the first bin. It was enough to get the 100 % accuracy of the classification.

*Discussion*

As it can be seen from the signal processing results, the techniques used here are showing quite different results for the cases of the normal valve spring and the short one. It seems what for this type of the compressor and valve, the valve spring failure can be quite reliably detected with the help of the vibration monitoring. To see if this is a case for other compressor types and other valve types, the additional experiments are needed.



**Figure 12.** The boxplot of the bin values for the 10 samples of each test case. The red color corresponds to the normal spring case, the green color corresponds to the short spring case.

## REFERENCES

- [1] R. Barron. Engineering Condition Monitoring. Longman, Essex, England, 1996.
- [2] J. Courrech. Condition Monitoring of Machinery. In C. M. Harris, editor, Shock and Vibration Handbook (4th Ed.), McGraw-Hi, 1996.
- [3] Condition Monitoring and Fault Detection of a Compressor Using Signal Processing Techniques, Youmin Zhang and Jin Jiang, Martin Flatley and Bryan Hil, Proceedings of the American Control Conference Arlington, VA June 25-27, 2001.
- [4] J. A Practical Guide to Wavelet Analysis., Christopher Torrence and Gilbert P. Compo, Bulletin of the American Meteorological Society, Vol. 79, No. 1, January 1998
- [5] Meyers, S. D., B. G. Kelly, and J. J. OBrien, 1993: An introduction to wavelet analysis in oceanography and meteorology: With application to the dispersion of Yanai waves. Mon. Wea. Rev., 121, 2858-2866
- [6] Farge, M., 1992: Wavelet transforms and their applications to turbulence. Annu. Rev. Fluid Mech., 24, 395-457.
- [7] O. Franz, A. Farenkamp, Effective Vibration Monitoring For Reciprocating Compressors. CompressorTech, March, 2017