

Rubidium-82 Generator Yield and Efficiency for PET

Perfusion Imaging: Comparison of Two Clinical Systems

Ali Ahmadi, MD, PhD,^a Ran Klein, PhD,^b Howard C Lewin, MD,^c Rob S.B. Beanlands, MD,^a and Robert A. deKemp, PhD,^a

^a University of Ottawa Heart Institute, Division of Cardiology, National Cardiac PET Centre, Ottawa, ON, Canada

^b The Ottawa Hospital, Division of Nuclear Medicine, Ottawa, ON, Canada

^c Cardiac Imaging Nuclear Associates, Los Angeles, CA, USA

Corresponding Author:

Robert A. deKemp, PhD, PEng, PPhys

University of Ottawa Heart Institute

National Cardiac PET Centre

40 Ruskin Street, Ottawa, ON

K1Y 4W7, Canada

RAdeKemp@ottawaheart.ca

613.696.7347

Abstract

Introduction. Strontium-82/Rubidium-82 ($^{82}\text{Sr}/^{82}\text{Rb}$) generators are used widely for positron emission tomography (PET) imaging of myocardial perfusion. In this study, the ^{82}Rb isotope yield and production efficiency of two FDA-approved $^{82}\text{Sr}/^{82}\text{Rb}$ generators were compared.

Methods. N=515 sequential daily quality assurance (QA) reports from 9 CardioGen-82® and 9 RUBY-FILL® generators were reviewed over a period of 2 years. A series of test elutions was performed at different flow-rates on the RUBY-FILL® system to determine an empirical correction-factor used to convert CardioGen-82® daily QA values of ^{82}Rb activity (dose-calibrator 'maximum' of 50 mL elution at 50 mL/min) to RUBY-FILL® equivalent values (integrated 'total' of 35 mL elution at 20 mL/min). The generator yield (^{82}Rb) and production efficiency (^{82}Rb yield / ^{82}Sr parent activity) were measured and compared after this conversion to a common scale.

Results. At the start of clinical use, the system reported ^{82}Rb activity from daily QA was lower for CardioGen-82® vs RUBY-FILL® (2.3 ± 0.2 vs 3.0 ± 0.2 GBq, $p < 0.001$) despite having similar ^{82}Sr activity. Dose-calibrator 'maximum' (CardioGen-82®) values were found to under-estimate the integrated 'total' (RUBY-FILL®) activity by ~24% at 50 mL/min. When these data were used to convert the CardioGen-82 values to a common measurement scale (integrated total activity) the CardioGen-82® efficiency remained slightly lower than the RUBY-FILL® system on average ($88 \pm 4\%$ vs $95 \pm 4\%$, $p < 0.001$). The efficiency of ^{82}Rb production improved for both systems over the respective periods of clinical use.

Conclusions. ^{82}Rb generator yield was significantly under-estimated using the CardioGen-82® vs RUBY-FILL® daily QA procedure. When generator yield was expressed as the integrated total activity for both systems, the estimated ^{82}Rb production efficiency of the CardioGen-82® system was ~7% lower than RUBY-FILL® over the full period of clinical use.

Keywords

Myocardial Perfusion Imaging

Positron Emission Tomography

Rubidium-82 Generator

Daily Quality Assurance

Abbreviations

ED effective dose

PET positron emission tomography

QA quality assurance

^{82}Rb Rubidium-82

^{82}Sr Strontium-82

Introduction

Rubidium-82 (^{82}Rb) is a widely used positron emission tomography (PET) tracer with a short half-life of $\sim 75\text{s}$.(1) Stress perfusion imaging with ^{82}Rb is used widely in cardiac PET centers for the assessment of known or suspected coronary artery disease.(2) The short half-life of ^{82}Rb allows rapid sequential rest and stress imaging with low radiation exposure to patients and medical staff.(3, 4) A mobile generator system is used to produce the ^{82}Rb -chloride tracer on-demand from the parent radioisotope strontium-82 (^{82}Sr) which has a half-life of ~ 25 days.(5) The generator ion-exchange column is typically made of a hydrated tin-oxide, and loaded with 100 mCi (3.7 GBq) of ^{82}Sr activity that decays continuously to produce ^{82}Rb . The strong adsorption of ^{82}Sr to tin-oxide compared to the weak binding of ^{82}Rb enables the selective elution of ^{82}Rb -chloride solution with standard physiologic saline.(6) The ^{82}Rb activity is then replenished quickly on the generator column (93.8-99.6% within 5-10 minutes, respectively) according to the properties of parent-daughter secular equilibrium.(7)

While the main components of $^{82}\text{Sr}/^{82}\text{Rb}$ generators are similar across different commercial systems, e.g. ion exchange column, saline supply and pump, generator and patient intravenous lines,(8) the shelf-life (approved period for clinical use) can be different in clinical practice.(9-11) The factors that influence generator shelf-life are the available daily ^{82}Rb isotope yield and the total volume of saline eluted through the column, both of which must be within the approved limits for clinical perfusion imaging.(12) Furthermore, the exact amount of delivered ^{82}Rb activity and its infusion profile (e.g. constant flow-rate vs constant activity-rate) are important parameters for

optimizing dynamic imaging accuracy and repeatability.(13, 14) In this context, the aims of the current study were to assess the isotope production efficiency (^{82}Rb yield / ^{82}Sr parent activity) of two FDA-approved $^{82}\text{Sr}/^{82}\text{Rb}$ generators during their clinical shelf-life and to characterize the effect of different daily quality assurance (QA) procedures on measured ^{82}Rb activity.

Methods

Quality Assurance Procedures

Sequential daily QA reports (N=515) were reviewed from 9 CardioGen-82® (Bracco Diagnostics Inc., Monroe, NJ) and 9 RUBY-FILL® (Jubilant DraxImage, Kirkland, QC) generators used at Cardiac Imaging Nuclear Associates, Inc. (Los Angeles, CA) over a continuous period from January 2017 to May 2019. Parent ^{82}Sr activity was calculated on a given date $Sr(d)$ based on the radiopharmaceutical calibration certificate activity on the date of manufacturing $Sr(D_0) = 100$ mCi (3.7 GBq), according to the known isotope decay, i.e.

$$Sr(d) = Sr(D_0) \times e^{-\Lambda(d-D_0)} \quad (1)$$

where $\Lambda = \ln(2)/25.35$ days is the decay constant of ^{82}Sr .(5) The initial calibration activity of ^{82}Sr parent was confirmed as 100 mCi (3.7 GBq) for all generators on the date of manufacturing (D_0).

The operation of both $^{82}\text{Sr}/^{82}\text{Rb}$ elution systems follow similar principles as described before, and illustrated in **Figure 1**.(15) Briefly, a syringe pump (CardioGen-82®) or peristaltic pump (RUBY-FILL®) is used to elute normal physiologic saline (0.9%

NaCl USP) through the generator column. A system of tubing delivers the radioactive ^{82}Rb eluate either to a sterile patient intravenous (IV) injection line or to a waste container. The CardioGen-82® was designed for elution at a constant flow-rate of 50 mL/min. The RUBY-FILL® elution system allows variable flow-rates from 15 to 30 mL/min. It has an additional generator-bypass line used to flush ^{82}Rb activity out of the patient line at the end of elution.(16) The bypass line can also be used with feedback control to standardize the shape of the infused activity profile, providing the same ‘square-wave’ injection regardless of the age of the generator.

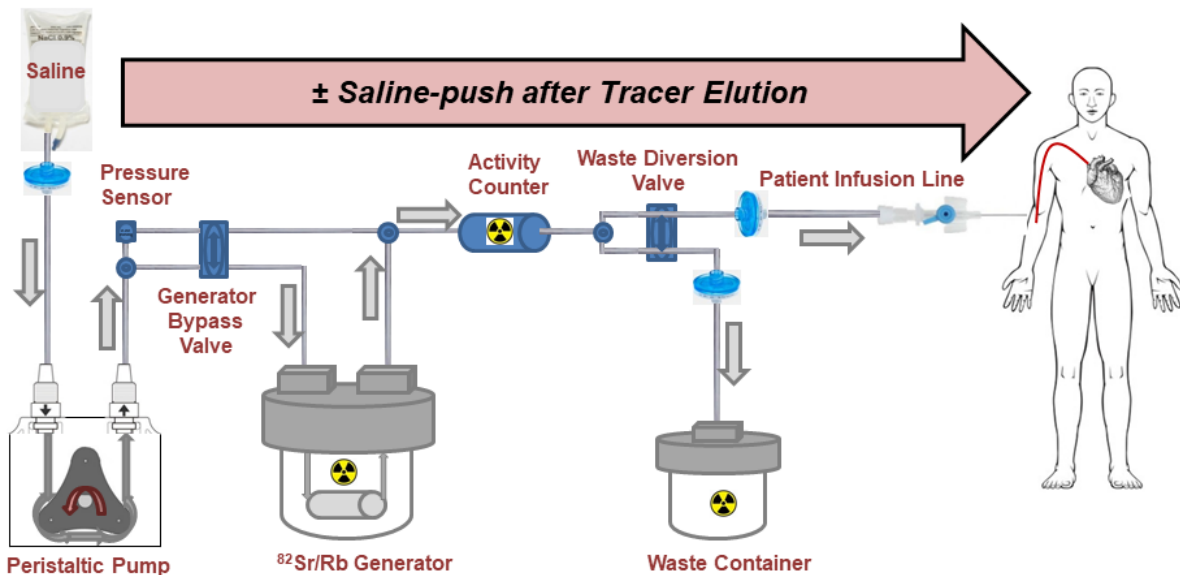


Figure 1. Components of the RUBY-FILL® ^{82}Rb generator and elution system. The CardioGen-82® system is similar but uses a syringe pump instead of peristaltic pump and does not include the generator-bypass valve/tubing for saline-push.

The daily ^{82}Rb calibration and breakthrough testing procedures use preset constant values for both the RUBY-FILL® (35 mL at 20 mL/min) and CardioGen-82® (50 mL at 50 mL/min) generators. The RUBY-FILL® system reports the second-by-

second integrated ‘total’ activity delivered during the daily calibration elution, as shown in **Figure 2**. The CardioGen-82® system does not report the integrated total ^{82}Rb activity as part of the daily QA procedures, but rather as the dose-calibrator ‘maximum’ value recorded at the end of the breakthrough testing elution.

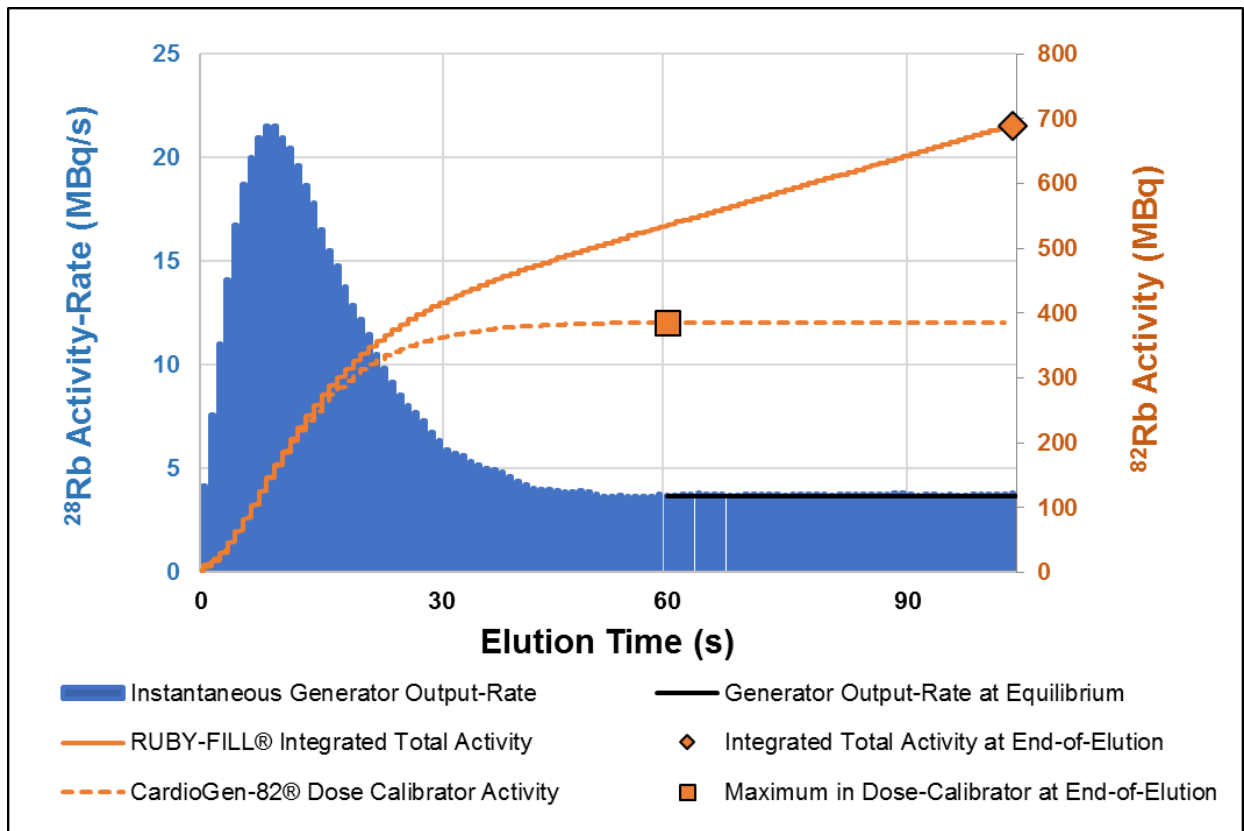


Figure 2. Example ^{82}Rb generator activity output profiles from a RUBY-FILL® test elution performed at 20 mL/min. ^{82}Rb eluate activity (MBq/s, blue) as measured at the output of the patient infusion line over time. Total activity delivered to the patient or calibration vial (MBq, solid orange line) increases over time according to the integrated area under the ^{82}Rb eluate time-activity curve. Activity measured in a dose-calibrator vial (CardioGen-82®) increases initially over time, but then reaches a steady-state maximum value (MBq, dashed orange line) which is lower than the integrated total activity.

For both generators, the ^{82}Rb activity $A_F(t)$ is delivered to the outlet of the patient infusion line at an instantaneous output-rate (MBq/s) that varies as a function of elution time t , and elution flow-rate F . During daily calibration the RUBY-FILL® system measures the delivered activity as the cumulative integrated ‘total’ of the ^{82}Rb activity delivered over $T = 105$ s duration of a 35 mL elution at $F = 20$ mL/min, i.e.

$$Rb_{TOTAL}(T) = \int_0^T A_{20}(t) dt \quad (2)$$

On the CardioGen-82® system, the dose-calibrator maximum activity is measured in a collection vial at the end of the 50 mL elution at $F = 50$ mL/min, i.e. $Rb_{MAX}(T = 60$ s) performed as part of the daily breakthrough testing (**Supplemental Figure S1**). Beyond the 60-s time-point, ^{82}Rb activity in the vial reaches a maximum value representing a steady-state balance between rubidium activity output from the generator and isotope decay, according to:

$$Rb_{MAX}(T) = \int_0^T A_{50}(t) e^{-\lambda(T-t)} dt \quad (3)$$

where $\lambda = \ln(2)/75.35$ seconds is the decay constant of ^{82}Rb .(5)

The respective values, i.e. CardioGen-82® ‘maximum’ and RUBY-FILL® ‘total’ are reported here as the measured daily QA activity. The ^{82}Rb yield is reported for both systems as the integrated total activity delivered over the time-course of an elution into the daily QA vial (**Table 1**).

Table 1. Activity, yield and efficiency methods for each elution system

Generator System	Daily QA Reported ⁸²Rb Activity	Reported ⁸²Rb Yield	Calculated Efficiency
RUBY-FILL®	Integrated Total from Calibration/Breakthrough Elution	Integrated Total from Calibration/Breakthrough Elution	Integrated Total Rb / Sr Parent
CardioGen-82®	Dose Cal Maximum from Daily QA Breakthrough elution	Integrated Total Estimated from Daily QA and RUBY-FILL test elutions (1.3 × Max)	Integrated Total Rb / Sr Parent

CardioGen-82® Correction Factor

On the RUBY-FILL® system, the ⁸²Rb yield is equal to the ‘Dose Delivered’ value shown on the daily QA calibration elution report (**Supplemental Figure S2**). To enable accurate comparison of ⁸²Rb yield between the two systems, a correction factor was determined to scale the CardioGen-82® daily QA activity (dose-calibrator maximum values) to the integrated total values that would be expected using the RUBY-FILL® calibration procedure.

The CardioGen-82® system operates at a fixed elution flow-rate of 50 mL/min, whereas RUBY-FILL® can operate over a range of flow-rates from 15 to 30 mL/min. Since there was no single elution flow-rate that could be used to compare both systems directly, a series of test elutions (60-seconds duration) was performed using the RUBY-FILL® generator (n = 6 days each) to measure the dose-calibrator ‘maximum’ activities produced over the range of available flow-rates (15, 20, 25 and 30 mL/min). These values were expressed relative to the true integrated total activity measured on each

day and plotted as a function of the elution flow-rate. Because the changes with flow-rate did not appear to be linear, two non-linear regression (logarithmic and power function) models were used to fit these data and extrapolate the maximum / total activity ratio expected at 50 mL/min. The inverse ratio was then used as a correction factor to scale the measured CardioGen-82® dose-calibrator maximum values to the equivalent integrated total activity values (⁸²Rb yield), as measured by the RUBY-FILL® system.

Generator Performance

For the RUBY-FILL® test elutions, percent error in the integrated total activity (actual/requested – 1) ×100% was determined as a function of the elution flow-rate. The actual elution flow-rates were also verified by dividing the volume of the eluate (mL) by the elution time (min) and plotting the elution flow-rate error (actual/requested – 1) ×100% as a function of the requested flow-rate. For both systems, the generator efficiency was reported as the ratio of ⁸²Rb yield (integrated total activity) divided by the ⁸²Sr parent activity available over the course of the generator shelf-life:

$$Efficiency = \frac{{}^{82}\text{Rb Yield}}{{}^{82}\text{Sr Parent Activity}} \times 100\% \quad (4)$$

Statistical Analysis

All values are presented as mean ± standard deviation. Correlations of continuous data were assessed using parametric bivariate analysis. Logarithmic and power function regression models were used for the calibration data extrapolation. Comparison of data between generators was performed with a two-way analysis of variance (ANOVA) assuming unequal variances, and statistical significance was

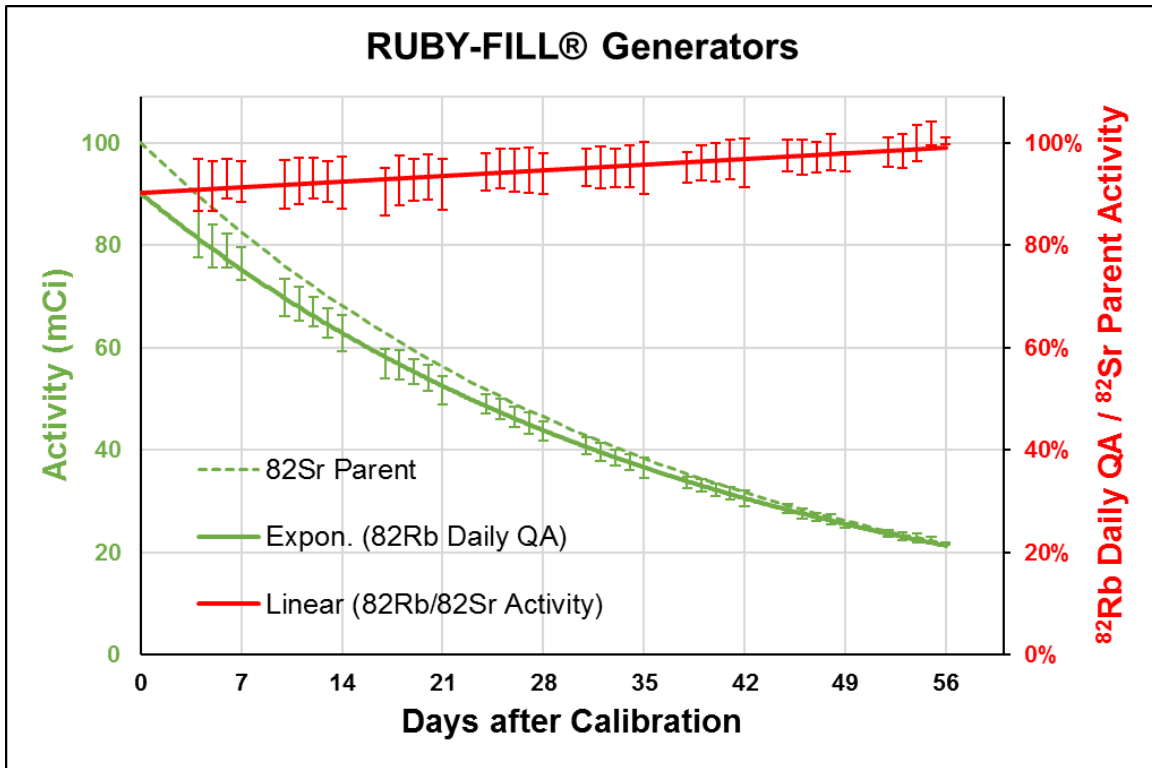
considered using $p < 0.05$. Statistical testing was performed using Excel® v2017 (Microsoft Corp, Redmond, WA).

Results

Daily QA Measurements

^{82}Rb QA activity values were measured for 240 days with the CardioGen-82® system and for 275 days with RUBY-FILL® (N=515 total). The average duration of clinical use was 32% longer with the RUBY-FILL® vs CardioGen-82® systems (54 ± 1 vs 41 ± 2 days, $p < 0.001$) as expected given the different generator expiration dates (60 vs 42 days) and elution volume limits (30 vs 17 liters) listed in the respective package inserts.(9, 11) The measured daily QA activity values are shown as a function of generator age (day of use) for both systems in **Figure 3**. On the first day of clinical use, the QA activity measured on the RUBY-FILL® system was 32% higher vs CardioGen-82® (**Table 2**), however on the last day of use the activity was the same for both systems (~800 MBq [22 mCi] on day 56 for RUBY-FILL® or day 42 for CardioGen-82®). When the ^{82}Rb QA activity was expressed as a percentage of the ^{82}Sr parent activity available on a given day, the average value for the CardioGen-82® generator was $67.3 \pm 3.4\%$ compared to $95.0 \pm 3.8\%$ for RUBY-FILL® ($p < 0.001$) over the full period of clinical use.

A.



B.

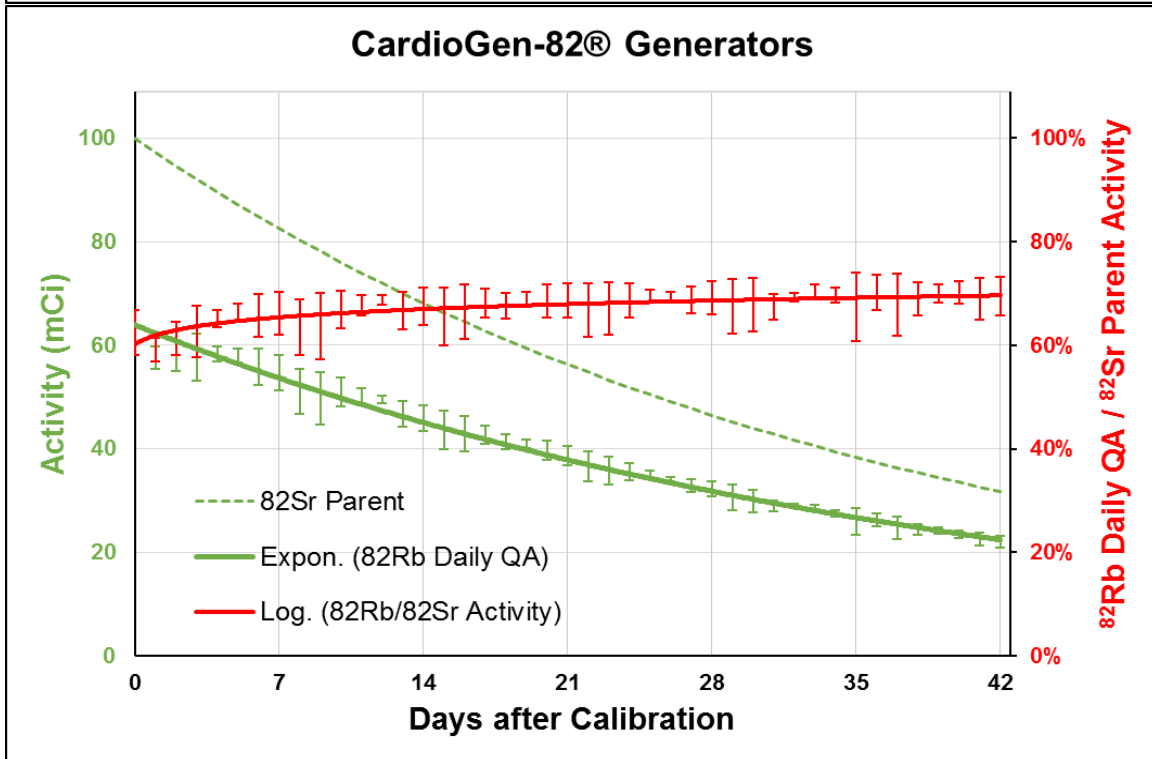


Figure 3. ^{82}Rb daily QA activity (solid green lines) measured on RUBY-FILL® (A) and CardioGen-82®(B) generator systems. Activity is shown in mCi (GBq-37) on the left axis, and as a percent of the ^{82}Sr parent activity available on each day of use (solid red lines) on the right axis.

Table 2. ⁸²Rb Generator Daily QA Activity (n=9 each)

Generator System	Integral (Yield)		Maximum (Steady-State)	
	GBq (mCi) on First Day of Use	GBq (mCi) on Last Day of Use	GBq (mCi) on First Day of Use	GBq (mCi) on Last Day of Use
RUBY-FILL *	3.04 ± 0.17 (82.2 ± 4.6) on day 4	0.80 ± 0.01 (21.7 ± 0.1) on day 56	2.31 ± 0.13 (62.6 ± 3.5) on day 4	0.61 ± 0.01 (16.5 ± 0.08) on day 56
CardioGen-82 **	3.03 ± 0.21 (82.0 ± 5.6) on day 0	1.07 ± 0.06 (28.9 ± 1.6) on day 42	2.31 ± 0.16 (62.4 ± 4.3) on day 0	0.81 ± 0.04 (22.0 ± 1.2) on day 42

Values are mean ± standard deviation. mCi values = GBq × 27 mCi/GBq

* RUBY-FILL Maximum values = Integral values ÷ 1.314 correction-factor

**CardioGen-82 Integral values = Maximum values × 1.314 correction-factor

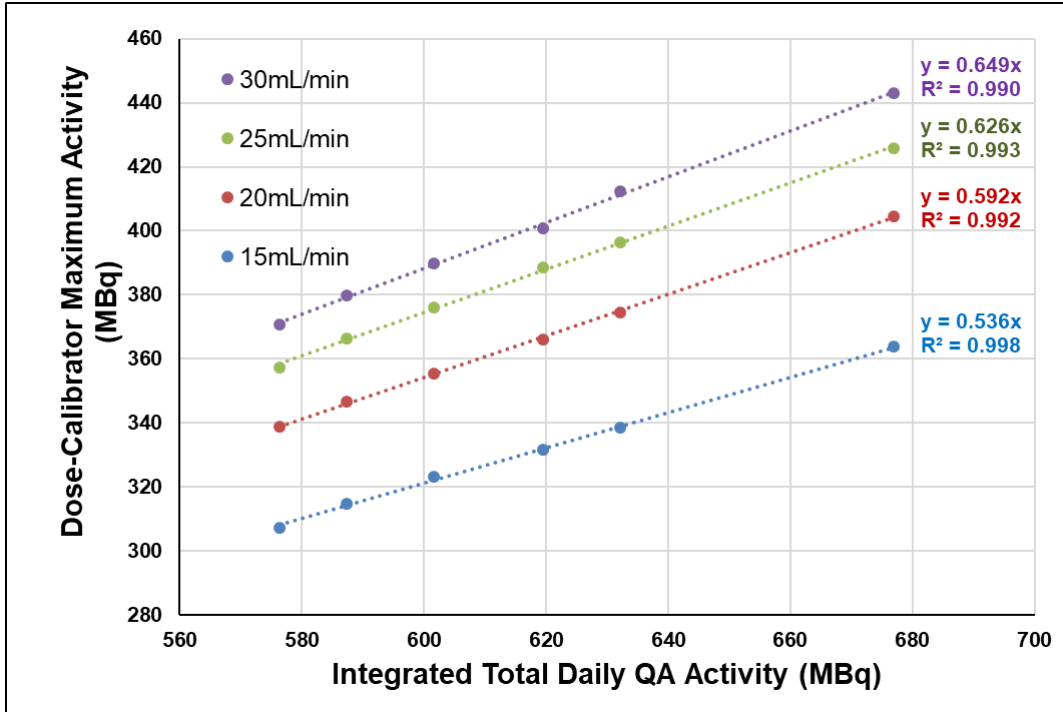
CardioGen-82® Correction Factor

The difference in daily QA activities was due, in part, to the different measurement techniques (dose-calibrator maximum vs integrated total activity), therefore the corresponding values for the CardioGen-82® system were derived using the result of the RUBY-FILL® test elutions. Typical ⁸²Rb time activity curves (TACs) for the test elutions performed at different flow-rates are shown in **Supplemental Figure S3**. As expected, the 20 mL/min test elution and calibration curves were nearly identical during the common 60-second elution interval. Percent error in the actual delivered vs. requested activity was consistently below 0.2% over the full range of flow-rates (**Supplemental Figure S4A**) confirming accuracy of the RUBY-FILL® elution system over the full range of flow-rates. (6) Error in the actual vs requested flow-rate was below 6% for all elutions (**Supplemental Figure S4B**) demonstrating accuracy of the RUBY-FILL® peristaltic pump over the range of elution flow-rates tested. There was a negative

correlation of flow-rate error with increasing flow-rate ($R^2=0.85$), without significant error at 20-25 mL/min.

At each flow-rate tested, the dose-calibrator maximum activity was very highly correlated with the integrated total ($R^2>0.99$) as shown in **Figure 4A**. The maximum / total activity ratios (slope of the lines in Figure 4A) increased significantly as a function of flow-rate, as summarized in **Table 3**. At an extrapolated flow-rate of 50 mL/min, the dose-calibrator maximum / total activity ratio was estimated as 0.750 ± 0.007 and 0.772 ± 0.008 using the logarithmic and power function models, respectively (**Figure 4B**). Both the non-linear functions had higher R^2 (>0.98) than a linear model fit to the data ($R^2=0.96$). The average value (0.761 ± 0.008) was used to compute the CardioGen-82® correction-factor as $1 / 0.761 = 1.314 \pm 0.013$.

A.



B.

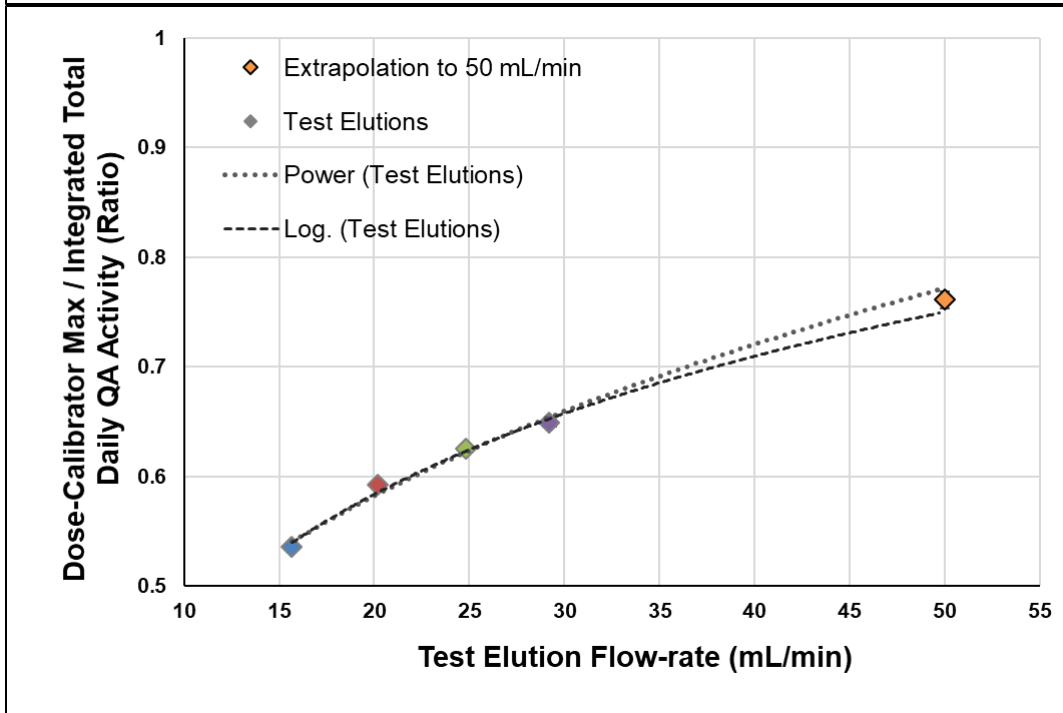


Figure 4. RUBY-FILL® test elution results (n=6 each). At each elution flow-rate, the dose-calibrator maximum activity (A) is a constant fraction (slope) of the integrated total QA activity. The corresponding ratios of Dose-calibrator Maximum / Integrated Total calibration activity (B) are extrapolated to the value of 0.761 that would be expected using a 50 mL @50 mL/min elution. Standard deviation error bars (~1%) are smaller than the plotted symbol size.

Table 3. RUBY-FILL® Test Elution Activity Ratios (n=6 each)

Elution Rate	Elution Maximum ÷ Calibration Total (from Figure 4A)	Elution Maximum ÷ Elution Total (from Figure S3A)
15 mL/min	0.536±0.002	0.830±0.005
20 mL/min	0.592±0.003	0.775±0.005
25 mL/min	0.626±0.003	0.724±0.007
30 mL/min	0.649±0.004	0.684±0.007
50 mL/min	0.761±0.008 *	0.51±0.07 *

**extrapolated using mean ± SD of logarithmic and power function models*

Generator Yield and Efficiency

When the CardioGen-82® dose-calibrator maximum ⁸²Rb values were multiplied by the estimated correction-factor (1.314), the integrated total ⁸²Rb yield on the first day of use (day 0) was 3.03±0.21 GBq, very similar to the value of 3.04±0.17 GBq measured on the RUBY-FILL® system (day 4) as shown in **Table 2**.

The corresponding CardioGen-82® efficiency was estimated as 88.4±4.4% (**Figure 5**) which was slightly lower than the RUBY-FILL® efficiency of 95.0±3.8% measured over the full period of clinical use (p<0.001).

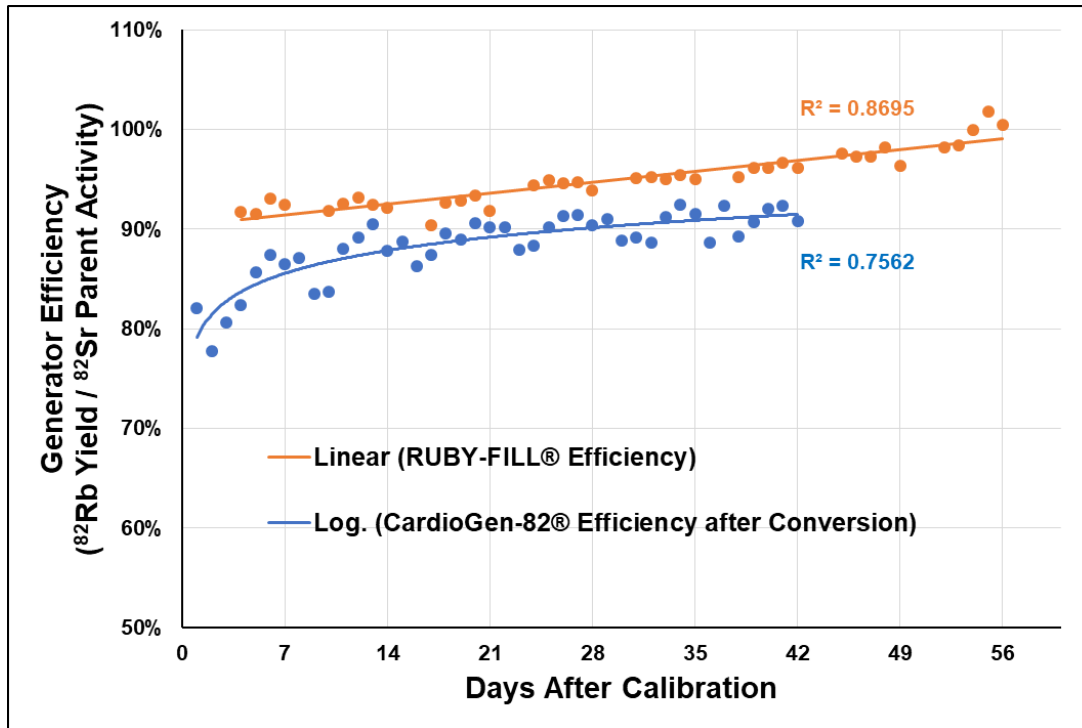


Figure 5. ⁸²Rb isotope production efficiency of the RUBY-FILL® and CardioGen-82® systems over the clinical shelf-life of N=9 generators each. ⁸²Rb yield values were measured for RUBY-FILL® (and estimated for CardioGen-82®) using 35 mL elution at 20 mL/min.

Discussion

⁸²Rb stress PET has become a routine method for myocardial perfusion imaging including the quantification of absolute myocardial blood flow (mL/min/g). The utility of ⁸²Rb PET to diagnose coronary artery disease and to guide appropriate treatment for CAD patients has been well-established previously.(17) The documented prognostic value of ⁸²Rb PET perfusion scanning,(2, 18, 19) its low radiation exposure to patients and medical staff,(1) and the availability of approved on-site ⁸²Sr/⁸²Rb generators(20) plays a key role in the increasing use of this modality. The number of imaging centers using ⁸²Rb PET has risen dramatically since the initial commercial approval (CardioGen-

82®) and subsequent addition (RUBY-FILL®) of these ⁸²Rb generator systems.(21)

With this increase in clinical capacity and diversity of generator systems, the need for standardized patient dosing is critical, as the net amount of injected activity ultimately determines the PET image quality and absorbed radiation dose to the patient.(22)

This study compared the ⁸²Rb production efficiency of the two generator systems available for cardiac PET perfusion imaging, and characterized the daily QA procedure effects on measured isotope yield. The main findings indicated: 1) ⁸²Rb yield of the CardioGen-82® generator was under-estimated by ~24% by using dose-calibrator maximum values for daily QA; 2) a correction-factor of ~1.3 may be used to convert CardioGen-82® daily QA values to equivalent integrated total ⁸²Rb activity as measured by the RUBY-FILL® system; 3) ⁸²Rb isotope yield and production efficiency were estimated to be ~7% higher for the RUBY-FILL® vs CardioGen-82® system, as measured over a clinical shelf-life that was ~30% longer.

A novel method was developed to bring the ⁸²Rb isotope yield measured by two different generators to a common scale for accurate comparison. The CardioGen-82® elution protocol recommends the patient maximum volume to be set at 50 mL and the patient dose at 1480 MBq (40 mCi), with a range of 1110-2220 MBq (30-60 mCi).(11, 23) The RUBY-FILL® system is user-adjustable for dose (e.g. 10-30 MBq/kg [0.27-0.81 mCi/kg] body weight) and flow-rate (15-30 mL/min) or infusion time (10-120 seconds). (9, 24) The infused patient activity is also reported differently by the two systems. RUBY-FILL® reports only the integrated total activity for both daily QA and patient studies. The CardioGen-82® system reports the integrated 'Patient Dose' and the 'End-of-Infusion' activity values, which must be calibrated at the same activity used for patient

elutions. Neither of these activity values appear to be accurate on the daily QA breakthrough elution reports, therefore they should not be used as a measure of CardioGen-82® ^{82}Rb isotope yield.

Both generator systems showed a small increase in ^{82}Rb isotope production efficiency over time (**Figure 5**). The mechanism for this observed improvement is not completely understood but may be due to migration of ^{82}Sr activity away from the column inlet, where it can be eluted from the column more completely. The difference in measured efficiency between vendors may be due to alternative chemical preparation/conditioning of the column resin and/or physical geometry/volume of exchanger in the generator columns, but these are proprietary data and difficult to confirm.

Three-dimensional (3D) PET systems are the current commercial standard which provides higher sensitivity for data acquisition, compared to previous generation 2D scanners.(20) However, highly sensitive signal acquisition carries a higher risk for detector saturation which can result in the over-estimation of myocardial blood flow. The saturation effect on dynamic imaging can be prevented by adjusting the injected activity for body weight to optimize the amount of tracer in the bolus first-pass transit.(13) To optimize the injected ^{82}Rb activity in regard to the camera sensitivity, the difference between requested vs injected activity (and volume), maximum vs integral activity, and constant vs variable infusion flow rate are important parameters that need to be taken into consideration. In this context, the current study provides insights to the technical aspects of $^{82}\text{Sr}/^{82}\text{Rb}$ generators that can affect the image quality and myocardial blood flow quantification (14). Our results indicated that the RUBY-FILL® elution activity and

flow errors (in proportion to the requested values) are exceedingly small, which confirms the high precision of this infusion system. Moody et al. have shown previously that the error in actual measured/requested dose for the CardioGen-82® generator was up to 50% for a requested activity of 370 MBq (10 mCi) and 33% for a requested activity of 550 MBq (15 mCi), and decreased as the requested activity approached 30 mCi (1110 MBq).(25) In our test elutions with RUBY-FILL®, the range of requested elution activity was ~400 to 600 MBq (11 to 16 mCi), and the elution activity error was negligible (less than 0.2%) due to the accurate modeling of eluate transport delay and isotope decay en-route from the generator to the outlet of the patient infusion line.(6)

Secondary analysis of the integrated total activity from the RUBY-FILL® test elutions (**Supplemental Figure S5**) demonstrated similar trends compared to the primary analysis of the dose-calibrator maximum values in **Figure 4**. The integrated total activity increased consistently as a function of elution flow-rate, up to a peak value 95% of the daily QA calibration activity, using 30 mL at 30 mL/min elution. These data also suggest that if the RUBY-FILL® generator was eluted using the CardioGen-82® protocol (50 mL at 50 mL/min), then the ⁸²Rb yield could increase to ~120% of the daily QA calibration activity.

Clinical procedure guidelines published by the Society of Nuclear Medicine(26) recommend that radiopharmaceutical doses should be dispensed and subsequently administered to patients within 10% and 20% of those indicated by the prescribing physician. The U.S. NRC Regulations (10 CFR 35.63) on the use of medical isotopes state "... a licensee may not use a dosage if the dosage does not fall within the prescribed dosage range or if the dosage differs from the prescribed dosage by more

than 20 percent”. (27) The most recent EANM guidelines for PET tumor imaging indicate that for automated administration “actual administered activity may not deviate by more than 3% from that indicated by the device”.(28) The activity error data from the RUBY-FILL® generator (**Figure S4A**) show that this system can meet even these most strict criteria, with actual vs requested activity errors of <0.11% over all test elutions performed. In comparison, the printed ‘End-of-Infusion’ activity values from the CardioGen-82® breakthrough elution reports appeared to under-estimate the measured dose-calibrator maximum values by ~30%, even when using the recommended elution settings of 50 mL at 50 mL/min. This underestimation may be due, in part, to the fact that this generator is typically calibrated using a requested ⁸²Rb activity which is less than the total yield available on a given day, and subsequent elutions are only recommended using the same calibration activity.

The accuracy of ⁸²Rb PET dosing is of clinical significance when the imaging results of different PET centers are compared or pooled together as part of multicenter imaging trials.(24) For example, these results may have important implications for the calculation of patient absorbed radiation doses. Effective dose (ED) estimates have been published recently for ⁸²Rb PET in the range of 0.80 and 1.1 mSv/GBq based on PET studies using the RUBY-FILL® and CardioGen-82® generators respectively.(3, 4) These radiation ED values are calculated using PET image-derived activity values divided (normalized) by the total injected activity, as reported by the respective generator systems. Because of this inverse relationship, *higher* ED values would be expected from PET studies performed using a generator system which reports *lower* administered ⁸²Rb activity. In fact, the ratio of ED estimates from the RUBY-FILL® /

CardioGen-82® dosimetry papers (0.73) is similar to the CardioGen-82® under-estimation of activity reported in the present study (0.76), providing a possible explanation for the discrepancy between these independently reported ED values. Our results suggest that the lower ED values reported by Hunter et al using PET studies performed with the RUBY-FILL® system may be more accurate, because the same integrated total activity method of measurement is used both during daily QA calibration and during patient elutions.(3)

Limitations

The CardioGen-82® correction-factor was calculated using the RUBY-FILL® daily QA protocol (integrated total activity of 35 mL elution @ 20 mL/min) as the reference standard in order to enable accurate comparison of ⁸²Rb isotope yield and production efficiency between the two systems. The results of this study do not suggest that all generator systems should use the same RUBY-FILL® elution settings above for daily QA, but rather that the dose-calibrator maximum or ‘steady-state’ value measured in a calibration vial consistently under-estimates the integrated total activity delivered to the patient (**Figure 2**), and that this under-estimation is a function of the elution volume and flow-rate (**Figure 4B**). The integrated total activity could have been referenced instead to the CardioGen-82® calibration elution settings (50 mL @ 50mL/min) in which case the RUBY-FILL® calibration values would have been multiplied by the extrapolated value of 0.761 for inter-comparison, as shown in **Table 2**.

Direct comparison of the activity profiles using the same elution flow-rate on both systems was not feasible in this study. The RUBY-FILL® maximum flow-rate is 30

mL/min, whereas CardioGen-82® uses a constant 50 mL/min elution flow-rate. The CardioGen-82® system does include a switch to use lower flow-rates (20 or 35 mL/min), but these are not part of the approved clinical labeling.(11) Therefore, direct comparison could be performed in future studies if CardioGen-82® daily QA was also measured at a flow-rate of 20 mL/min. In the current study, extrapolation of the RUBY-FILL® test elution data from 30 to 50 mL/min was associated with a certain margin of error in estimation of the CardioGen-82® correction-factor. Although the logarithmic and power functions provided excellent fits to these data ($R^2>0.98$), the extrapolated values should be interpreted with a degree of caution.

Conclusions

While both ^{82}Rb generators use a similar physical design to produce and administer the radiotracer, differences in the daily QA methods were shown to impact the measured ^{82}Rb yield and efficiency. These characteristics of $^{82}\text{Sr}/^{82}\text{Rb}$ generators are of critical importance for accurate patient dosing, in particular when the myocardial perfusion imaging results from different cardiac PET imaging centers are compared or combined for multicenter clinical trials.

New Knowledge Gained

The RUBY-FILL® generator appears to have slightly higher ^{82}Rb isotope production efficiency compared to CardioGen-82®, as well as a longer shelf-life and small elution activity error.

Disclosures

AA was supported by a MITACS Elevate fellowship. RSB has received research grants and honoraria from Lantheus Medical Imaging, GE Healthcare and Jubilant DraxImage. RdK and RK receive royalty revenues from rubidium-82 generator technologies, FlowQuant® software licenses, and are consultants for Jubilant DraxImage. HCL is a consultant for Jubilant DraxImage

References

- (1) Ziadi MC. Myocardial flow reserve (MFR) with positron emission tomography (PET)/computed tomography (CT): clinical impact in diagnosis and prognosis. *Cardiovascular diagnosis and therapy* 2017;7:206-18.
- (2) Dorbala S, Di Carli MF, Beanlands RS, Merhige ME, Williams BA, Veledar E et al. Prognostic value of stress myocardial perfusion positron emission tomography: results from a multicenter observational registry. *J Am Coll Cardiol* 2013;61:176-84.
- (3) Hunter CR, Hill J, Ziadi MC, Beanlands RS, deKemp RA. Biodistribution and radiation dosimetry of (82)Rb at rest and during peak pharmacological stress in patients referred for myocardial perfusion imaging. *European journal of nuclear medicine and molecular imaging* 2015;42:1032-42.
- (4) Senthamizhchelvan S, Bravo PE, Esaias C, Lodge MA, Merrill J, Hobbs RF et al. Human biodistribution and radiation dosimetry of 82Rb. *J Nucl Med* 2010;51:1592-9.
- (5) McCutchan EA. Nuclear Decay Data in the MIRD format, <https://www.nndc.bnl.gov/mird/> accessed December 6, 2019. Upton, NY.
- (6) Klein R, Adler A, Beanlands RS, Dekemp RA. Precision-controlled elution of a 82Sr/82Rb generator for cardiac perfusion imaging with positron emission tomography. *Physics in medicine and biology* 2007;52:659-73.
- (7) Bushberg JT. *The Essential Physics of Medical Imaging*. Philadelphia: Wolters Kluwer Health/Lippincott Williams & Wilkins; 2011, p. 606-7.

- (8) Yano Y. Essentials of a rubidium-82 generator for nuclear medicine. International journal of radiation applications and instrumentation Part A, Applied radiation and isotopes 1987;38:205-11.
- (9) Drugs at FDA: RUBY-FILL® In: FDA dataset editor. FDA Center for Drug Evaluation and Research,
https://www.accessdata.fda.gov/drugsatfda_docs/label/2016/202153s000lbl.pdf;
2016.
- (10) Schindler TH, Valenta I, Schelbert HR. Myocardial Blood Flow Measurement: Evaluating Coronary Pathophysiology and Monitoring Therapy. In: Zaret BL, Beller GA editors. Clinical Nuclear Cardiology; 2010. p. 506-27.
- (11) Drugs at FDA: Cardiogen-82® In: FDA dataset editor. FDA Center for Drug Evaluation and Research,
https://www.accessdata.fda.gov/drugsatfda_docs/label/2012/019414s014lbl.pdf;
2012.
- (12) Renaud J, Wiles M, Garrard L, R.S. B, deKemp R. New rubidium-82 generator efficiency improves over time. SNMMI Annual Meeting. Philadelphia, Pennsylvania; 2018. p. 1045.
- (13) Renaud JM, Yip K, Guimond J, Trottier M, Pibarot P, Turcotte E et al. Characterization of 3-Dimensional PET Systems for Accurate Quantification of Myocardial Blood Flow. J Nucl Med 2017;58:103-9.
- (14) Klein R, Ocneanu A, Renaud JM, Ziadi MC, Beanlands RSB, deKemp RA. Consistent tracer administration profile improves test-retest repeatability of myocardial blood flow quantification with (82)Rb dynamic PET imaging. Journal

- of nuclear cardiology : official publication of the American Society of Nuclear Cardiology 2018;25:929-41.
- (15) Klein R, Beanlands RS, deKemp RA. Quantification of myocardial blood flow and flow reserve: Technical aspects. Journal of nuclear cardiology : official publication of the American Society of Nuclear Cardiology 2010;17:555-70.
- (16) Renaud JM, Wu KY, Gardner K, Aung M, Beanlands RSB, deKemp RA. Saline-push improves rubidium-82 PET image quality. Journal of nuclear cardiology : official publication of the American Society of Nuclear Cardiology 2018.
- (17) Dorbala S, Di Carli MF. Cardiac PET perfusion: prognosis, risk stratification, and clinical management. Seminars in nuclear medicine 2014;44:344-57.
- (18) Dorbala S, Hachamovitch R, Curillova Z, Thomas D, Vangala D, Kwong RY et al. Incremental prognostic value of gated Rb-82 positron emission tomography myocardial perfusion imaging over clinical variables and rest LVEF. JACC Cardiovascular imaging 2009;2:846-54.
- (19) Ziadi MC, Dekemp RA, Williams KA, Guo A, Chow BJ, Renaud JM et al. Impaired myocardial flow reserve on rubidium-82 positron emission tomography imaging predicts adverse outcomes in patients assessed for myocardial ischemia. J Am Coll Cardiol 2011;58:740-8.
- (20) Yoshinaga K, Klein R, Tamaki N. Generator-produced rubidium-82 positron emission tomography myocardial perfusion imaging-From basic aspects to clinical applications. Journal of cardiology 2010;55:163-73.

- (21) Chatal JF, Rouzet F, Haddad F, Bourdeau C, Mathieu C, Le Guludec D. Story of Rubidium-82 and Advantages for Myocardial Perfusion PET Imaging. *Frontiers in medicine* 2015;2:65.
- (22) Huizing ED, van Dijk JD, van Dalen JA, Timmer JR, Arkies H, Slump CH et al. Minimizing rubidium-82 tracer activity for relative PET myocardial perfusion imaging. *Nucl Med Commun* 2017;38:708-14.
- (23) Roby AE, Johnson NP, Gould KL. An Analysis of 3 Common CardioGen-82 ⁸²Rb Infusion System Injection Methods and Their Impact on Clinical Volume and Image Counts. *Journal of nuclear medicine technology* 2015;43:113-6.
- (24) Renaud JM, Mylonas I, McArdle B, Dowsley T, Yip K, Turcotte E et al. Clinical interpretation standards and quality assurance for the multicenter PET/CT trial rubidium-ARMI. *J Nucl Med* 2014;55:58-64.
- (25) Moody JB, Hiller KM, Lee BC, Corbett JR, Ficaro EP, Murthy VL. Limitations of Rb-82 weight-adjusted dosing accuracy at low doses. *Journal of nuclear cardiology : official publication of the American Society of Nuclear Cardiology* 2017;24:1395-401.
- (26) Callahan RJ, Chilton HM, Ponto JA, Swanson DP, Royal HD, Bruce AD. Procedure guideline for the use of radiopharmaceuticals 4.0. *Journal of nuclear medicine technology* 2007;35:272-5.
- (27) United States Nuclear Regulatory Commission: § 35.63 Determination of dosages of unsealed byproduct material for medical use;
<https://www.nrc.gov/reading-rm/doc-collections/cfr/part035/part035-0063.html>
(Last Reviewed/Updated August 29, 2017).

- (28) Boellaard R, Delgado-Bolton R, Oyen WJ, Giammarile F, Tatsch K, Eschner W et al. FDG PET/CT: EANM procedure guidelines for tumour imaging: version 2.0. *European journal of nuclear medicine and molecular imaging* 2015;42:328-54.

Site Name _____ Reviewed by site signature: _____ Sr-82/Sr-85 Testing

Decay Factors			Generator Data		Patient Line Data	
Decay Time	Factor	Generator Lot #			Lot #	
2 min 30 sec	4	Calibration Date			Lot #	
3 min 45 sec	8	Accessory Pack Data		Lot #		
5 min 0 sec	16	Lot #			Lot #	
		Lot #				

The first elution of the day must be discarded before starting quality control procedures. Sr-82/Sr-85 Testing is performed on a 50 ml volume.
Refer to Rb-82 Infusion System User Guide for instructions

A	B	C	D	E*	F	G	H	I	J	K	L	M	N
Quality Control Infusion Date and Time	Rb-82 Reading from Dose Calibrator (mCi)	Decay Time (min:sec)	Rb-82 Reading Decay Corrected (B x Decay Factor)	80 Minutes Post Elution Reading from Dose Calibrator (µCi)	Divisor from Generator Data Sheet	Sr-82 Level 80 Minutes Post Elution (µCi) (E / F)	Ratio of Sr-82 to Rb-82 (µCi/mCi) (G / D)	Sr-86/Sr-82 Ratio from the Generator Data Sheet	Ratio of Sr-85 to Rb-82 (µCi/mCi) (H * I)	Are the Ratios (H, J) Within the Expiration Limits?	Are the Ratios (H, J) below the Alert Limits? If No, reject Sr-82/Sr-85 level after 750 ml	Comments	Operator Initials
DATE/TIME 9/28/05 9:00am	6.07	3:45	48.56	0.13	2.07	0.0628	0.001293	2.24	0.002896	Y	Y		KM

INFUSION TERMINATED NORMALLY

SET-POINT VALUES:

Elution Volume = 40 mL
 Patient Volume = 30 mL
 Patient Dose = 50.0 mCi
 Dose Rate Threshold = 1.0 mCi/sec
 Flow Rate = 50 mL/min
 Calibration Factor = 926

ACTUAL INFUSION DATA:

Elution Volume = 26 mL
 Patient Volume = 19 mL
 Patient Dose = 50.1 mCi
 Infused Activity Present
 At End Of Infusion = 45.4 mCi
 Activity Present Between
 Detector and Waste Valve = 0.674 mCi
 in Volume of 0.592 mL
 Activity Present Between
 Waste Valve and Patient = 3.23 mCi
 in Volume of 2.75 mL

ACTIVITY PROFILE

Time sec	Detector mCi/sec	Patient mCi/sec
1	0.000	0.000
2	0.000	0.000
3	0.000	0.000
4	0.000	0.000
5	0.000	0.000
6	0.000	0.000
7	0.003	0.000
8	0.056	0.000
9	0.377	0.000
10	1.149	0.000
11	1.937	0.016
12	3.026	0.422
13	3.558	1.191
14	3.648	1.996
15	3.624	3.023
16	3.652	3.487
17	3.650	3.548
18	3.564	3.528
19	3.385	3.558
20	3.134	3.549
21	2.848	3.457
22	2.556	3.270
23	2.277	3.024
24	2.023	2.743
25	1.797	2.462
26	1.611	2.188
27	1.450	1.946
28	1.314	1.729
29	1.204	1.552
30	1.103	1.398
31	1.020	1.268
32	0.578	0.709

Supplemental Figure S1. CardioGen-82 Daily QA Breakthrough Worksheet (top) and example Patient Elution Report (bottom left and right). Daily QA activity was measured manually using the dose-calibrator maximum ⁸²Rb reading at the end of the breakthrough testing elution, and the decay-corrected reading was recorded on the Worksheet as shown in the red box.

Activity Calibration and Sr Breakthrough Check

Calibration Date: 2019-07-19 11:35

Calibration Constant: 0.000279

Dose Delivered: 825.51 MBq

Flow Rate: 20.00 ml/min

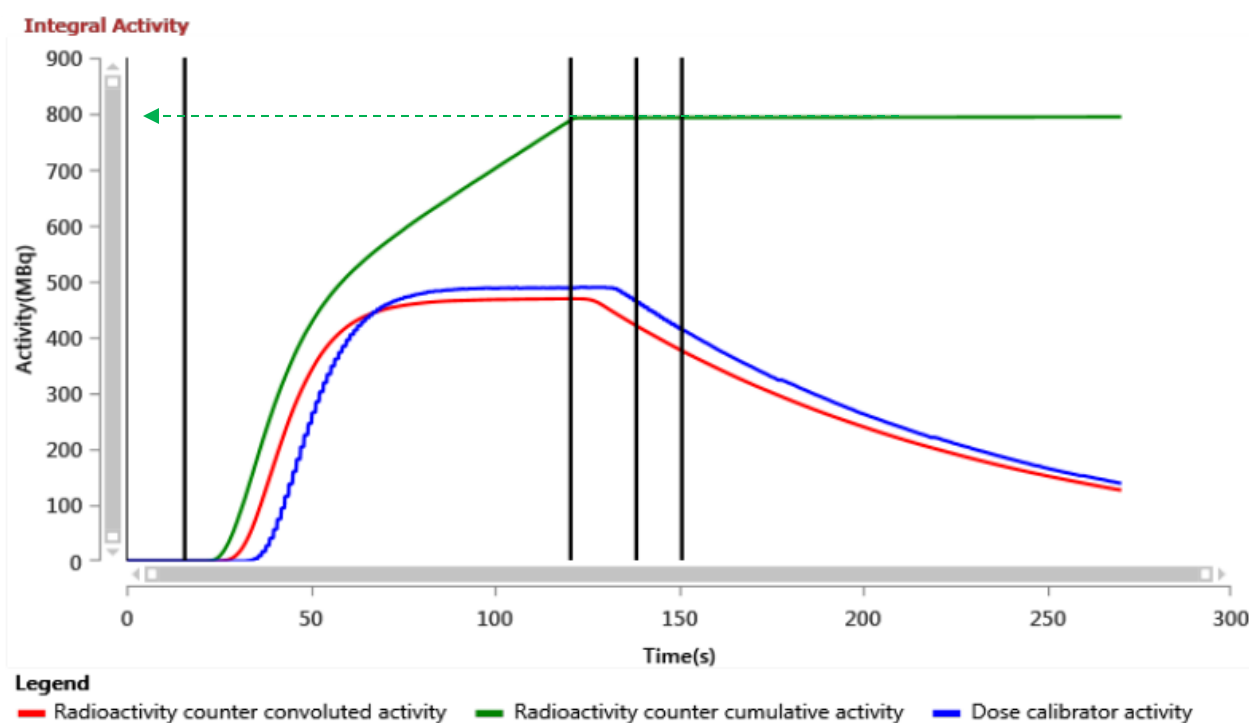
Status: Successful ✓

Verification Date: 2019-07-19 12:07

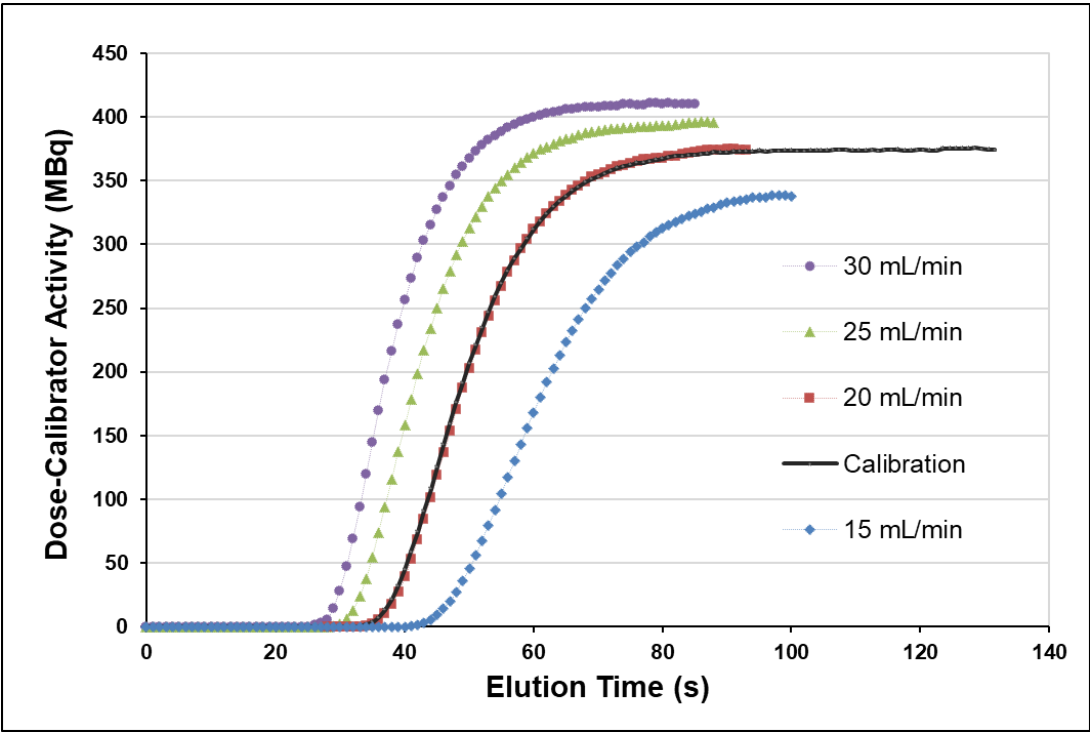
Sr82 / Rb82 Ratio: 0.001660 kBq/MBq
8% of USP Limit

Sr85 / Rb82 Ratio: 0.003078 kBq/MBq
2% of USP Limit

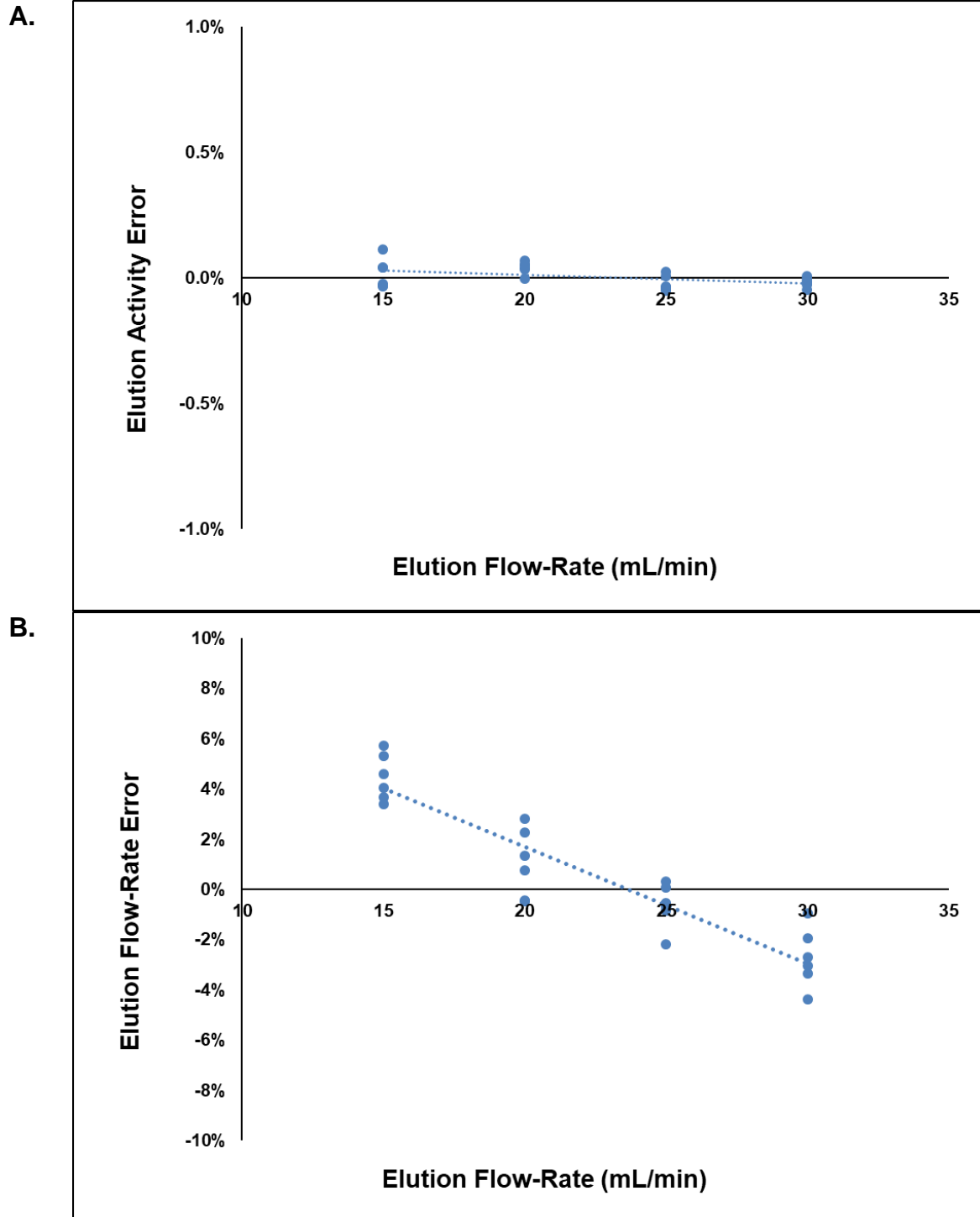
Status: Successful ✓



Supplemental Figure S2. RUBY-FILL Daily QA Calibration and Breakthrough elution report. The 'Dose Delivered' is the integrated total Daily QA activity (shown in green) as measured during a 35 mL elution at 20 mL/min. The measured dose calibrator values are shown in blue, which reach a steady-state maximum value typically 60-90 seconds after the start of elution.

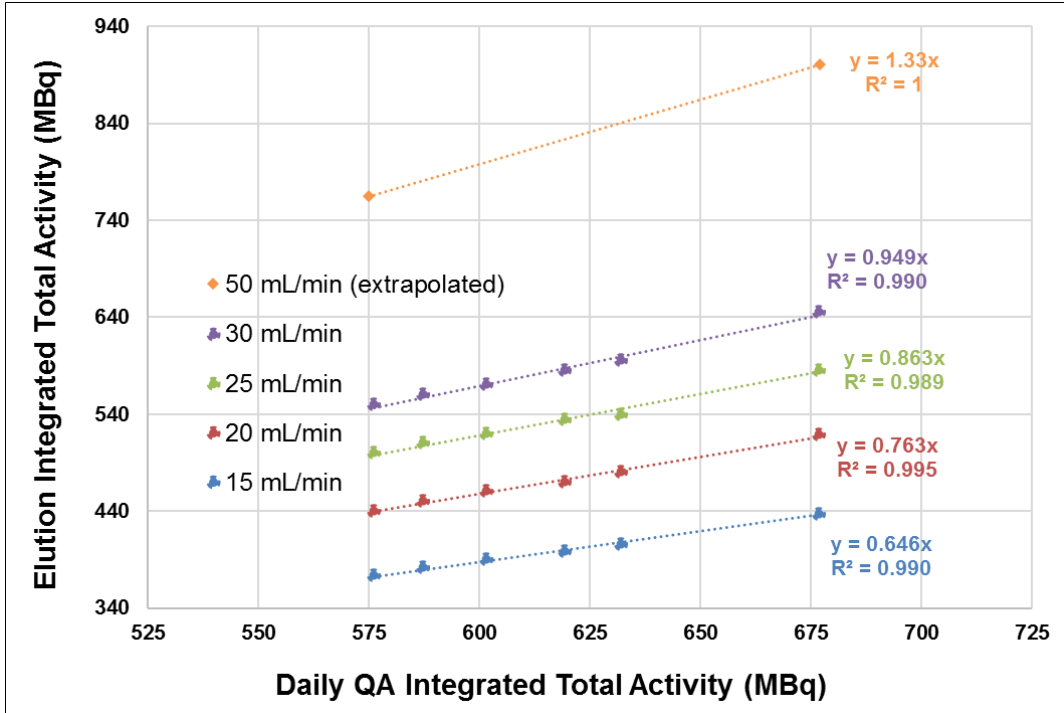


Supplemental Figure S3. RUBY-FILL® test elutions (60 seconds each) measured on day 3 out of 6. The dose-calibrator maximum activity increases as a function of elution flow-rate, because there is less time for ^{82}Rb decay during transit from the generator to the dose-calibrator.

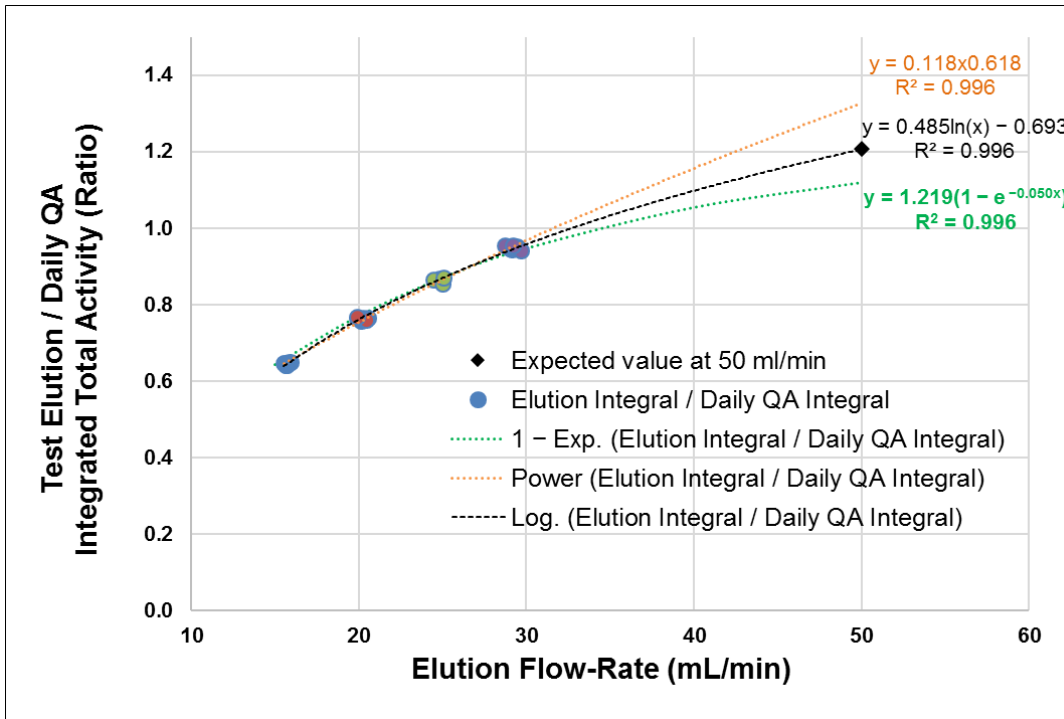


Supplemental Figure S4. RUBY-FILL® test elution results (n=6 days). The error in delivered vs requested activity (A) was less than 0.1% over all elution flow-rates. The measured elution flow-rate error (B) decreased with increasing flow-rate.

A.

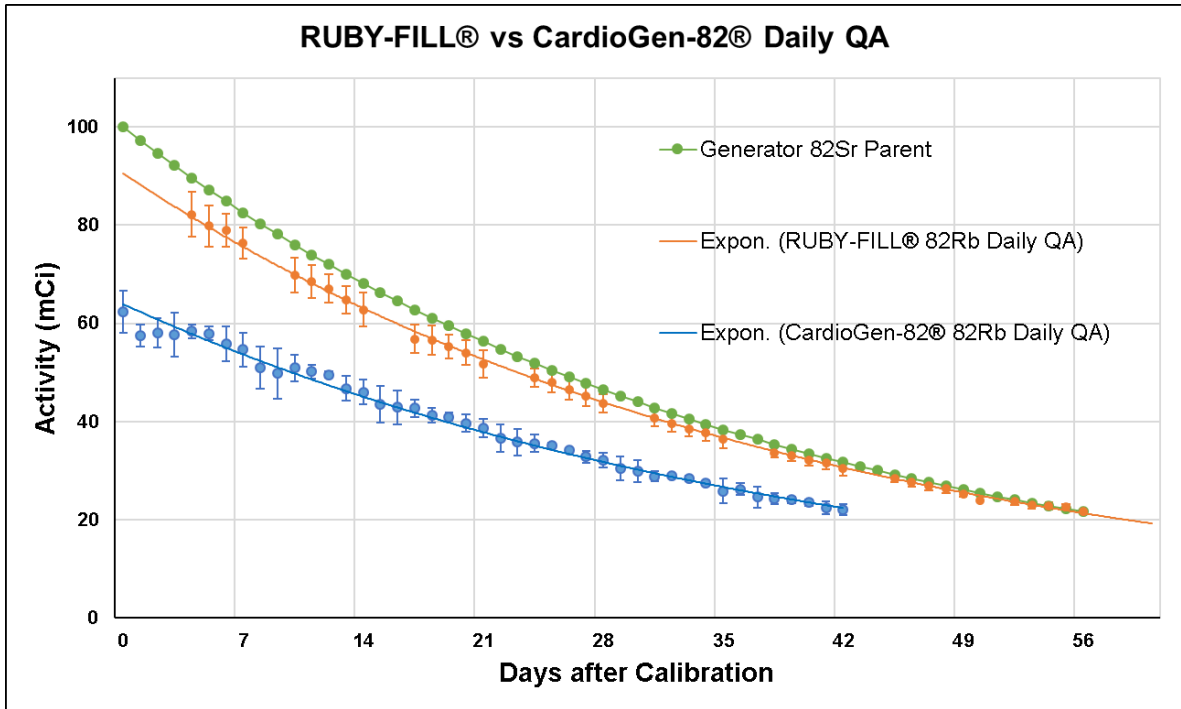


B.

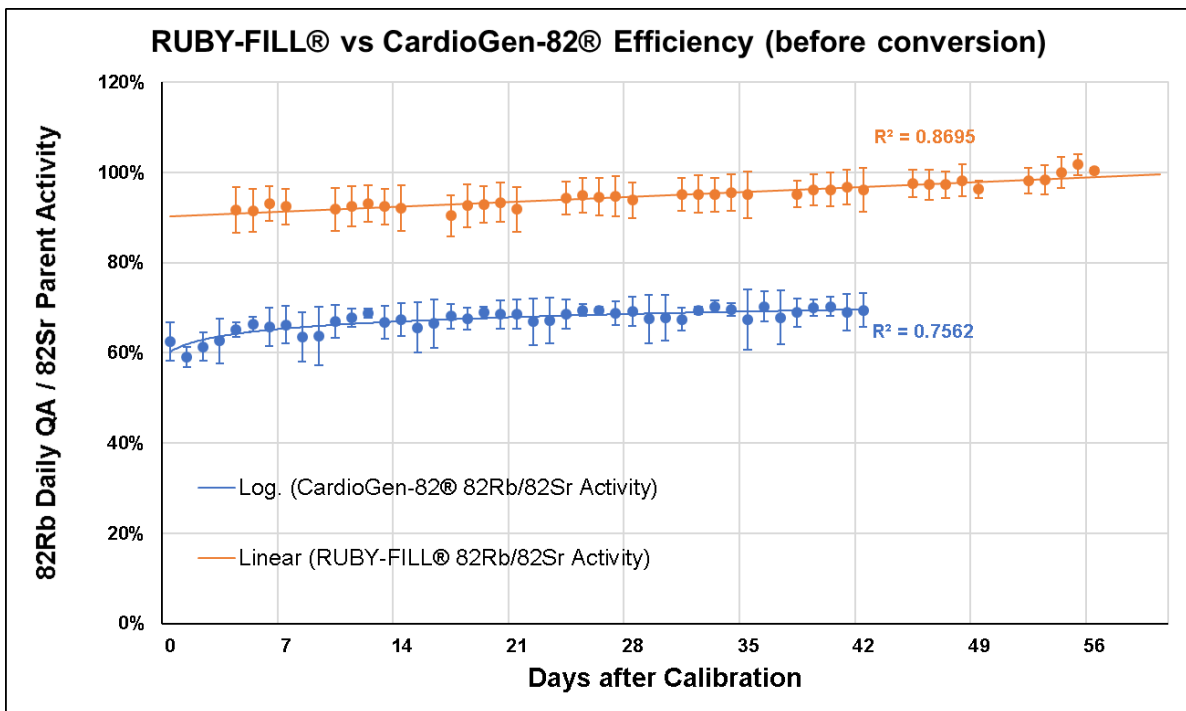


Supplemental Figure S5. RUBY-FILL® test elution results (n=6). At each flow-rate, the integrated total activity of the test elution (A) is a constant fraction (slope) of the daily QA integrated total activity. The corresponding Test Elution / Daily QA Integrated Total activity ratios (B) are extrapolated to the value of ~1.2 that would be expected using 50 mL @50 mL/min elution.

A.



B.



Supplemental Figure S6. ^{82}Rb isotope production efficiency of the RUBY-FILL® ($95 \pm 4\%$) and CardioGen-82® ($67 \pm 3\%$) systems over the clinical shelf-life (N=9 generators each) before conversion to the same scale.