

THE SUPER-SUPER...

V.N.Nikitin, I.V.Nikitin

The steady growth of the number of arcana of the mysterious universe is a sign of imperfection of existing theories and ideas about the surrounding world, which contributes to the creation of radically new alternative ideas and theories. New ideas should be piercing and understandable to everyone, to promote an adequate perception of reality and to be as much as possible interconnected with each other and with existing scientific knowledge. In this case, alternative ideas will inevitably become punchy! The results of long-term theoretical studies of abnormal physical phenomena of the processes of the origin and evolution of the universe are embodied in the exclusive hypotheses of the creative collective "NIKI" and are set forth here in a logical sequence, from the moment the Universe emerged to its transformation into "nothing."

THE SUPER-SUPER...

To date, there is no complete unified theory or hypothesis, not only regarding the processes of the origin and evolution of the universe, but even of its individual objects and substances. The attempts of scientists to disclose or justify the mysteries of the universe somehow have no beginning and no end, they are not logical and are not perceived at all.

Even more dangerous are persistent attempts to influence the human consciousness with some strange theories such as strings, a multitude of measurements, uncertainties, etc. Also persistently and unprovenly, scientists do not leave God alone and the fruits of his creation. These efforts, attempts and mistakes of learned men are only led to the side and introduce additional chaos into the process of cognition of the whole.

We exist in a galaxy called Universe, which is limited and ordered. Our Milky Way galaxy originated as a result of the galactic decay of the Universal White Hole and moves to the outskirts of the Universe.

Before and after the beginning. The universe is the entire existing material world.

How the universe has acquired its present form, from which it originated, are trying to explain very many theories. According to the most popular of them, the universe arose as a result of a giant phenomenal explosion 13 billion years ago, and along with it appeared time, space, energy, matter. Evidence of the Big Bang are: the value of the concentration of helium, hydrogen and some other light elements, relict radiation, distribution of inhomogeneities in the universe (for example, galaxies).

In this theory, which dominates today, there is no definite description of the origin of the Big Bang. Do not explain the cause of the Big Bang and other hypotheses suggesting the eternal existence of the universe. The colossal amount of energy was compressed to an incredibly small size and began to expand. Thus the substance of the Universe heated up to a huge temperature. Under these conditions, the first elementary particles began to form. One of the proofs of the theory is the relic background - radiation, the source of which was the Big Bang.

The existing models for describing the process of the Big Bang differ mainly in the treatment of the future of the whole system. Expansion of the universe is still ongoing. In the future, two options are possible: 1) the universe will expand infinitely. 2) At some point, the reverse expansion process will begin, which will end with compression. The list of possible options for the final also includes freezing, thermal death and the rupture of the universe, which is theoretically possible.

Another problem that the universe poses to scientists is the definition of its form. It is still not solved. For today it is not clear whether the space of the universe is flat. A positive answer to this question makes it possible to use Euclidean geometry in territories of cosmic scale. The overwhelming majority of researchers hold the view that the space of the universe is really flat and has folds only in small areas.

According to the Big Bang theory, the universe does not have spatial boundaries. Today there is no unambiguous understanding of the spatial structure of the universe. Scientific and technological progress has not yet reached the level at which one can give an exhaustive answer to the question of what the universe is. Nevertheless, there are little-known alternative hypotheses, including those put forward by the creative team "NIKI", presented here to your attention and curiosity.

Galaxies are the sparks of a universal fire! The red color of galaxies (Figure 1) on the border of the universe indicates their extinction, like sparks from a fire, and, according to a number of scientists, their gigantic speed of removal from us (almost at the speed of light) is just an illusion. Galaxies on the border of the universe slow down their movement! As a result, the galaxies on the border of the universe dissolve in the space of "nothing"!

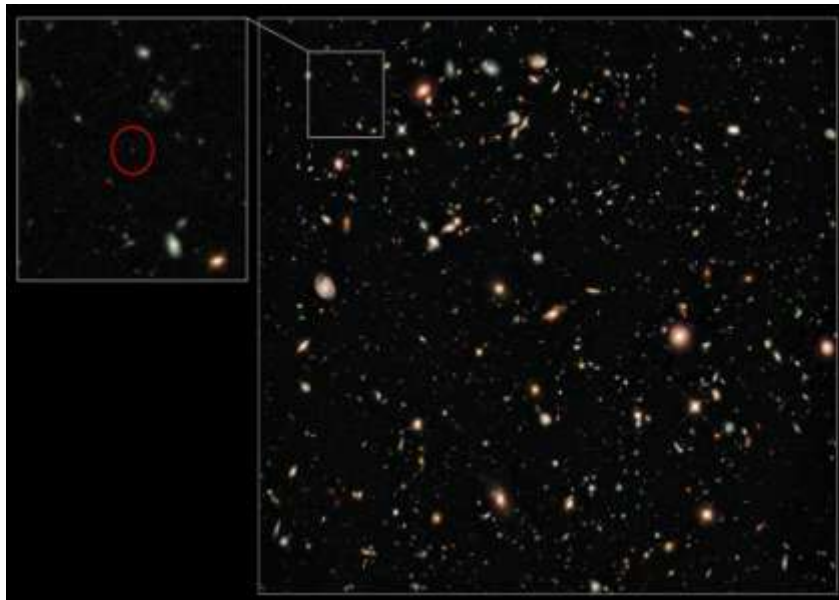


Fig. 1. Galaxies on the border of the universe

A no less clear explanation of the essence of the hypothesis put forward is the photograph of the eruption of the volcano (Figure 2), which is a sign and creator of life on the objects of the universe.



Fig.2. Eruption

"After all, if the stars are lit, it means ..." Our Universe is one of the Multiverse galaxies, which is bounded by a gravitational shell. In the center of our universe is the Black Hole. The initial stage of the galactic evolution of our universe is a limited space with a gravitational shell and a White Hole. The White Hole was the galactic donor of our universe and, ultimately, turned into the Black Hole, which we have today.

The galactic evolution of our universe is the result of the galactic decay of the White Hole and its transformation into the Black Hole. The source of galaxy energy is the Universal White Hole. The final result of the collapse of everything is the universe of fundamental particles "nothing." Relic radiation is a consequence of the ordered motion of "remnants" of decaying galaxies in the energy envelope of the Universe.

These hypotheses do not contradict the existence of the "axis of evil" and are consistent with the following exclusive hypotheses: the limitations of the universe, the appearance of a dark stream, the appearance of Eridan Superspot, the nature of white noise.

And what's next? Physicists reflect on what lies beyond the boundaries of our universe. Scientists have created several theories of the existence of something outside the universe. However, they are all based on the definition of the Hubble volume. In cosmology, the Hubble volume, the Hubble radius or the Hubble sphere is the region of the

expanding universe surrounding the observer, beyond which objects are removed from the observer at a speed greater than the speed of light.

Hypothesis: the speed of light in the energy envelope of the universe is reduced to zero. Outside it begins Anti-Galaxy a with its own physical laws. The antisense is a hypothetical universe, a metagalaxy almost entirely consisting of antimatter, located at a great distance and (or) in another space-time dimension.

Currently, scientists discovered the boundaries of the universe, which manifest themselves in the form of numerous bright flashes (explosions) on its outskirts. This phenomenon can be observed even with an unaided eye.

It was outside. Quite long ago, watching stars, quasars, galaxies and other bright cosmic objects, scientists constantly fixed the discrepancy between the amount of visible normal matter and the forces of gravitational interactions generated by objects from this matter. For explaining the observed imbalance, it was suggested that there is a kind of mysterious kind of matter that was called "dark matter." But, as is known, all attempts to discover this dark matter did not bring any positive result to date.

Two independent groups of scientists from Edinburgh (United Kingdom) found about half of the missing normal matter of the universe. The particles of normal baryonic matter include protons, neutrons, electrons and other known elementary particles. And the mentioned missing half of normal matter is present in the Universe in the form of strings of super-hot rarefied gas connecting galaxies.

According to our ideas about the universe beyond its borders, the Anti-population begins with its physical laws.

Hypothesis: the missing part of dark matter is in the Antiven! The illusion of the existence of the Pi number Pi (number) is a mathematical constant that expresses the ratio of the circumference to the length of its diameter. Denoted by the letter of the Greek alphabet "pi".

Mysterious people around the world eat up a piece of pie on the fourteenth of March every year - it's the day of Pi, the most famous irrational number. This date is directly related to the number whose first figures are 3.14. Pi is the ratio of the circumference to the diameter. Since it is irrational, it is impossible to write it in the form of a fraction. This is an infinitely long number. It was discovered thousands of years ago and has been continuously studied ever since.

Hypothesis: the asymmetry of everything is the main condition for the existence of the universe, and, hence, there is no absolute circle and, as a consequence, the number Pi.

You can't erase words from a song. "Every fire will burn down sometime." We have offered only some fragments of the created scientific reserve, and, in the case of further development of the research direction, scientists will be able to better understand the history and predict the future of our planet and the entire universe. The advanced exclusive hypotheses require a new approach to research into the processes of creation and evolution of the universe and its substances!

We hope that our planet will not remain alone in the universe!



Fig.1. Bonfire

Bibliography

Authors: V.N. Nikitin, I.V. Nikitin

1. And what's next? [Electronic resource] // ViXra.org. - Access mode: <http://vixra.org/abs/1710.0098>. - (Date of circulation: 10.10.2017).

2. Another example of the limited and orderly universe [Electronic resource] // ViXra.org. - Access mode: <http://vixra.org/abs/1703.0165>. - (Date of circulation: 12.04.2017).

3. Hypothesis about what is the energy source of the Universe galaxies [Electronic resource] // ViXra.org. - Access mode: vixra.org/abs/1705.0356. - (Date of circulation: September 14, 2017).

4. Hypothesis of origin of relic radiation [Electronic resource] // ViXra.org. - Access mode: <http://vixra.org/abs/1508.0179>. - (Date of circulation: 12.04.2017).

5. If to collapse, then to the end! [Electronic resource] // ViXra.org. - Access mode: <http://vixra.org/abs/1704.0309>. - (Date of circulation: September 14, 2017).
6. ILLUSION OF EXISTENCE OF NUMBER "PI" [Electronic resource] // ViXra.org. - Access mode: <http://vixra.org/abs/1711.0366>. - (Date of circulation: November 21, 2017).
7. It was OUTSIDE [Electronic resource] // ViXra.org. - Access mode: <http://vixra.org/abs/1710.0229>. - (Date of circulation: 20.10.2017).
8. The hypothesis of the existence of the universe "Galaxy" [Electronic resource] // ViXra.org. - Access mode: <http://vixra.org/abs/1510.0119>. - (Date of circulation: 12.04.2017).
9. The hypothesis of the galactic decay of our universe [Electronic resource] // ViXra.org. - Access mode: <http://vixra.org/abs/1510.0122>. - (Date of circulation: 12.04.2017).
10. The hypothesis of the limitation of the universe [Electronic resource] // ViXra.org. - Access mode: <http://vixra.org/abs/1508.0001>. - (Date of circulation: 12.04.2017).
11. The Most Romantic from the Most Current // ViXra.org. - Access mode: <http://vixra.org/abs/1711.0329>. - (Date of circulation: 17.11.2017).