

Relativity of information explains quantum criticality and matter-wave duality

Ramzi Suleiman^a

Department of Psychology, University of Haifa, Abba Khoushy Avenue 199, Haifa 3498838, Israel
& Department of Philosophy, Al Quds University, East Jerusalem and Abu Dies, P.O.B. 51000,
Palestine.

Abstract

The present article proposes an epistemic approach to relativity, termed *information relativity theory*. For this purpose we consider a physical system in which an observer receives information on measurements taken in another reference-frame moving with constant velocity v relative to observer's frame. Unlike existing ontic relativity theories, we avoided questions pertaining to the *true* state of Nature (i.e., as it is for itself). We only ask how physical measurements taken in the "moving" frame are transformed when they are received in the observer's "rest" frame. We specify that information is communicated using an information carrier with known velocity v_c ($v_c > v$). We make no other assumptions, thus our approach is *completely epistemic*. For systems of the above described type we derive the epistemic relativistic time, distance, mass, and energy transformations, relating measurements transmitted by the information sender, to the corresponding information obtained by the receiver. The resulting terms are simple and beautiful with several Golden Ratio symmetries. For $\beta = \frac{v}{v_c} \ll 1$, all the derived transformations reduce to Galileo-Newton terms. Provided that $v_c > v$ the theory applies to all systems which could be described by the preparation described above, regardless of the modality and velocity of the information carrier, and the rest mass of the moving body.

(a) Email: Suleiman@psy.haifa.ac.il

An essential feature of the theory is that the direction of relative motion is of crucial importance. The derived time transformation concurs with the original Doppler formula, renders the theory useful for relativistic cosmology. No less important the theory predicts that distancing objects will suffer length extension. At sufficiently high velocities the theory predicts that two bodies distancing from each other can maintain a spatial locality, a property which enables the theory to bypass Bell's theorem. We demonstrate the validity of the above conclusion by successfully explaining and reproducing quantum theoretic results for two key quantum phenomena: quantum phase-transition, and matter-wave duality.

Keywords: Information; Epistemic; Ontic; Inertial systems; Special relativity; Time dilation; Distance contraction, Bell's theorem, quantum phase transition, matter-wave duality.

1. Introduction

An important philosophical question, which rests at the core of the present article, pertains to distinction between the ontological and epistemological perspectives in physics. In general, ontology refers to the nature and behavior of systems as they are, independent of any empirical access, while epistemology comprises all kinds of issues related to the knowledge (or ignorance) of information gathering, and the ways in which humans process the gathered information (perceptually, cognitively, and otherwise) [1]. Although the traditional discourse in philosophy draws a clear cut distinction between ontology and epistemology, keeping the two separated and unrelated [2], in physics, as in other empirical sciences, such separation is impractical. No matter which perspective one takes, in any scientific inquiry about the world our knowledge is based on observations and measurements. Quantum mechanics provides a good example of coexistence between the ontic and epistemic perspectives. Schrödinger initially interpreted the quantum state as a tangible physical wave (ontic perspective), and this view continues to be the one most physicists and philosophers of science adopt [3-5]. The epistemic view [6-9] regards the wave function a probabilistic description of

our knowledge about the states of the physical system. But despite this fundamental difference, must rely on the same experimental procedures and measurements. The two views of quantum physics continue to coexist not only because the ontic view must after all rely on epistemic knowledge, but also because the two views produce the same predictions.

Turning to relativity theories, in which the present paper aspires to make a contribution, we note that Einstein's special and general relativity theories are ontic, and so are all versions of doubly special relativity (DSR) theories [10-13]. Albert Einstein, did not only reject the quantum theoretic model due to its incompleteness [14]; he was also very skeptic about its epistemological perspective. The intriguing and historic debate between Einstein and Bohr in this issue is well documented. Put briefly, Einstein was concerned with questions pertaining to reality, i.e., with things as they are, independent of observers or measurements, Bohr contended that "It is wrong to think that the task of physics is to find out how nature is. Physics concerns what we can say about nature." (Quoted in [15]).

It is important at this point to stress that Einstein's special and general relativity are not only ontic in their general perspective; they also enforce a *realistic interpretation of relativity* itself. In the framework of special relativity, time dilation is real and manifest in the observed difference between the readings of stationary and moving clocks. In SR's solution to the Twin Paradox [16, 17], the "traveling" twin returns to earth truly and verifiably younger than the "staying" twin, implying that the "traveling" twin returns to the future. On the same line, General Relativity's spacetime is not hypothetical but a real entity, interacting locally with mass, causing objects to gravitate toward each other. Without getting into much detail, we briefly note that a similar enforcement of an interpretation of relativity as a true state of nature is characteristic of all existing relativity theories, without exception. We also note briefly that we are not aware of any discussion neither by Einstein, nor by others, concerning the realistic nature of relativity. Real time dilation and length contraction are taken as factual results. We presume that this state of affairs was dictated, as *force majeure* by

special relativity theoretical results (e.g., time dilation) rather than being an antecedent of a philosophical, premeditation approach to explaining the physical world.

The present article we take an epistemic approach to relativity. We do not ask what the real nature of the physical world is, but how such reality is reflected in our observations and measurement. Like in quantum mechanics, in our epistemic approach to relativity, the preparation of the system and the method of measurement and information flow between observers must be completely determined. We call the proposed approach *information relativity*. We shall keep the analysis simple by treating the case two reference frames moving with respect to each with constant velocity (v), while communicating information about physical observables, such as time durations of events and lengths of objects. We assume that one observer's measurements are communicated to the second observer by an information carrier with a constant velocity v_c with respect to the information transmitter's rest-frame. For rendering the situation practical, we assume $v_c > v$. We make no additional assumptions. We are interested in the following *epistemic* question: How would observations taken in "moving" reference frame vary upon its receipt by an observer stationed in the "rest-frame"? Although we do not speculate about the true state of Nature, the above question is of great importance to empirical investigation of the physical reality, since it speaks in its language. Moreover, we shall demonstrate that our approach is powerful in providing new insights and making good predictions regarding two key quantum phenomena: quantum phase transition and matter-wave duality. Other explanations and predictions of the theory in other fields of physics, including cosmology, will be alluded to briefly in the concluding section.

In the following section we present a detailed derivation of the theory's transformations and discuss their main properties and we show that the derived length transformation enables the theory to bypass Bell's theorem. In section 3 we demonstrate the validity of the above conclusion by successfully explaining and reproducing quantum theoretic results for two key quantum phenomena:

quantum phase-transition, and matter-wave duality. In section 4 we summarize, allude to other applications of the theory in various fields of physics and draw some general conclusions.

2. Theory of information relativity

We consider a simple preparation in which the time duration of an event, as measured by an observer A who is stationary with respect to the point of occurrence of the event in space, is transmitted by an information carrier which has a constant and known velocity v_c , to an observer B who is moving with constant velocity v with respect to observer A. We make no assumptions about nature of the information carrier. Aside from the preparation describes above throughout our entire analysis no further assumptions are made. Moreover, we do not undertake any logical step or mathematical calculation, unless the variables involved in such steps or calculation are experimentally measurable.

2.1 Relativity of time

We ask: what is the event duration time to be concluded by each observer, based on his or her own measurements? Formally, we consider two observers in two reference frames F and F' distancing from each other with constant velocity v . For the sake of simplicity, but without loss of generality, assume that the observers in F and F' synchronizes their clocks, just when they start distancing from each other, such that $t_1 = t_1' = 0$, and that at time zero the points of origin of F and F' were coincided (*i.e.*, $x_1 = x_1' = 0$). Suppose that at time zero in the two frames, an experiment started in F' at the point of origin, terminating exactly $\Delta t'$ seconds according to the clock stationed in F' , and that promptly with the termination of the experiment, a signal is sent by the observer in F' to the observer in F . The "experiment" can be any event at the origin with duration of $\Delta t'$ (as measured in F').

After $\Delta t'$ seconds, the point at which the event took place stays stationary with respect F' (*i.e.*, $x_2' = x_1' = 0$), while relative to frame F this point would have departed by x_2 equaling:

$$x_2 = v \Delta t' \quad \dots\dots (1)$$

Notably, in eq. 1 the left side includes a measurement of distance taken in F , while the right side includes a measurement of time duration taken in F' . The validity of equation could be verified by an experimentally feasible method. As example, if the observer in F conducts an identical experiment, to the experiment conducted in F' . Because the laws of physics are the same everywhere, he or she will conclude that when the event at F' has terminated, F' was at a distance of $x_2 = v \Delta t'$ away as measure in F .

If the information carrier sent from the observer in F' to the observer in F traveled with velocity V_F relative to F , then it will be received by the observer in F after a delay of:

$$t_d = \frac{x_2}{V_F} = \frac{v \Delta t'}{V_F} = \frac{v}{V_F} \Delta t' \quad \dots\dots (2)$$

Since F' is distancing from F with velocity v , we can write:

$$V_F = V_0 - v \quad \dots\dots (3)$$

Where V_0 denotes the information carrier's velocity in the light-source rest frame (F'). Substituting the value of V_F from eq. 3 in eq. 2, we obtain:

$$t_d = \frac{v \Delta t'}{V_0 - v} = \frac{1}{\frac{V_0}{v} - 1} \Delta t' \quad \dots\dots (4)$$

Due to the information time-delay, the event's time duration Δt that will be registered by the observer in F will be:

$$\Delta t = \Delta t' + t_d = \Delta t' + \frac{1}{\frac{V_0}{v} - 1} \Delta t' = \left(1 + \frac{1}{\frac{V_0}{v} - 1}\right) \Delta t' = \left(\frac{\frac{V_0}{v}}{\frac{V_0}{v} - 1}\right) \Delta t'$$

$$= \left(\frac{1}{1 - \frac{v}{V_0}} \right) \Delta t' \quad \dots(5)$$

Denoting $\frac{v}{V_0} = \beta$ eq. 5 becomes:

$$\frac{\Delta t}{\Delta t'} = \frac{1}{1 - \beta} \quad \dots (6)$$

For $\beta \ll 1$ ($v \ll V_0$) eq. 6 reduces to the classical Newtonian equation $\Delta t = \Delta t'$, while for $\beta \rightarrow 1$ ($v \rightarrow V_0$), $\Delta t \rightarrow \infty$ for all positive $\Delta t'$.

For a communication medium to be fit for transmitting information between frames in relative motion, a justifiable condition is to require that the velocity of the carrier is larger than the velocity of the relative motion, i. e. $\beta < 1$.

It is especially important to note further that the above derived transformation applies to *all* carriers of information, including *acoustic*, *optic*, etc. For the case in which information is carried by light or by electromagnetic waves with equal velocity, we have $\beta = \frac{v}{c}$, where c is the velocity of light in the light-source rest frame. Without loss of generality, because the present paper treats only systems involving transmission of information by light or other electromagnetic waves, in what follows we shall set $V_0 = c$.

Note that eq. 6, derived for the time travel of moving bodies with constant velocity, is quite similar to the Doppler Effect formula, derived for the wave-length (frequency) of waves emitted from traveling bodies. In both cases *the direction of motion matters*. In the Doppler Effect [18, 19] a wave emitted from a distancing body will be red-shifted (longer wavelength), whereas a wave emitted from an approaching body will be blue-shifted (shorter wavelength). In both cases the degree of red or blue shift will be positively correlated with the body's velocity. The same applies to the time duration of an event occurring at a stationary point of a moving frame. If the frame is distancing

from the observer, time will be dilated, whereas if the frame is approaching the observer will contract. Interestingly, while eq. 6 predicts that the time dilation for distancing bodies approaches infinity when $\beta \rightarrow 1$, it puts a theoretical limit on the time contraction to for approaching bodies, since for $\beta \rightarrow -1$, it predicts a time contraction of exactly $\frac{1}{2}$.

2.2 Relativity of distance

To derive the distance transformation, consider the two reference-frames F and F' discussed above. Without loss of generality assume as before that when F and F' start distancing from each other $t_1 = t_1' = 0$, and $x_1 = x_1' = 0$. Assume further that F' has onboard a rod placed along its x' axis between the points $x' = 0$ and $x' = x_2'$ (see Figure 1) and that the observer in F' uses his clock to measure the length of the rod (in its rest frame) and communicates his measurement to the observer in F . As before, assume that the information carrier from frame F' to frame F is light or another electromagnetic wave with velocity c (as measured in the light source rest frame). To perform the measurement of the rod's length, at $t_1' = t_1 = 0$ a light signal is sent from the rare end of the rod, i.e., from $x' = x_2'$ to the observer at the point of origin $x' = 0$.

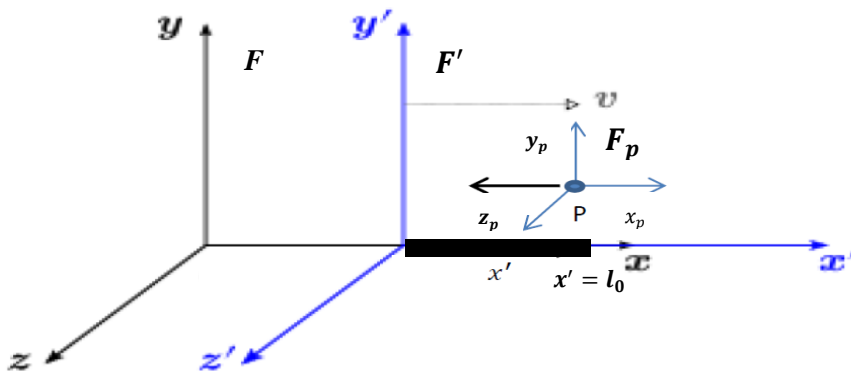


Figure 1: Two observers in two reference frames, moving with velocity v with respect to each other.

Denote the reference frame of the first light photon by F_p (see Fig 1) and the time duration in F_p for the light photon to arrive the observer in F' by Δt_p . If the signal arrives to the observer in F' at time $t' = t'_2$, then he or she can calculate the length of the rod as being

$$l_0 = x'_2 = c t'_2 \quad \dots\dots (7)$$

Using eq. 6 t'_2 as a function of Δt_p can be expressed as:

$$t'_2 = \frac{1}{1 - \frac{v}{c}} \Delta t_p = \frac{1}{1 + \frac{v}{c}} \Delta t_p \quad \dots\dots (8)$$

Which could be rewritten as:

$$\Delta t_p = (1 + \frac{v}{c}) t'_2 \quad \dots\dots (9)$$

Because F' is departing F with velocity v , the light signal reach and observer in F at time t_2 equaling:

$$t_2 = \Delta t_p + \frac{vt_2}{c} = \Delta t_p + \frac{v}{c} t_2 \quad \dots\dots (10)$$

Substituting the value of Δt_p from eq. 9 in eq. 10 yields:

$$t_2 = (1 + \frac{v}{c}) t'_2 + \frac{v}{c} t_2, \quad \dots\dots (11)$$

Which could be rewritten as:

$$t_2 = \frac{(1 + \frac{v}{c})}{(1 - \frac{v}{c})} t'_2 \quad \dots\dots (12)$$

Substituting the value of t'_2 from eq. 7 we get:

$$t_2 = \frac{(1 + \frac{v}{c})}{(1 - \frac{v}{c})} \frac{l_0}{c} \quad \dots\dots (13)$$

Thus, the observer in F will conclude that the length of the rod is equal to:

$$l = c t_2 = \frac{(1 + \frac{v}{c})}{(1 - \frac{v}{c})} l_0 \quad \dots (14)$$

Or:

$$\frac{l}{l_0} = \frac{1 + \beta}{1 - \beta} \quad \dots (15)$$

Where $\beta = \frac{v}{c}$.

The above derived relativistic distance equation predicts *distance contraction only when the two reference-frames approach each other*. On the other hand, it predicts *distance extension when the reference-frames distance from each other*. Thus, for particles distanced from another particle with high velocity β , the eq. 15 predicts that its spatial dimension along the travel axis will incur a relativistic "stretch". This means that at sufficiently high β , two particles, although distanced from each other, could remain spatially connected. This is a crucial feature of information relativity distinguishing it from all current theories, which presuppose that two particles which are distancing from each other become spatially disconnected. In the proposed theory at sufficiently high velocities two bodies distancing from each other can maintain *spatial locality*, a property not considered by Bell's theorem, thus providing a local explanation to quantum phenomena. In section 3 we shall provide a convincing proof of this conjecture by demonstrating the success of the proposed theory in explaining and reproducing quantum theoretic results for two key quantum phenomena: quantum phase-transition, and matter-wave duality.

We briefly note that the relationship between relativistic distance and time could be easily derived from equation 6 and 15 yielding:

$$\frac{l}{l_0} = 2 \frac{\Delta t}{\Delta t_0} - 1 \quad \dots (16)$$

Figure 2 depicts the relativistic time and distance as a function of β . As examples, for $\beta = \frac{1}{4}, \frac{1}{3}, \frac{1}{2}, \frac{2}{3}, \frac{3}{4}$, for $\frac{\Delta t}{\Delta t_0}$ and $\frac{l}{l_0}$ we get $(\frac{4}{3}, \frac{3}{2}, 2, 3, 4)$, and $(\frac{5}{3}, 2, 3, 5, 7)$, respectively.

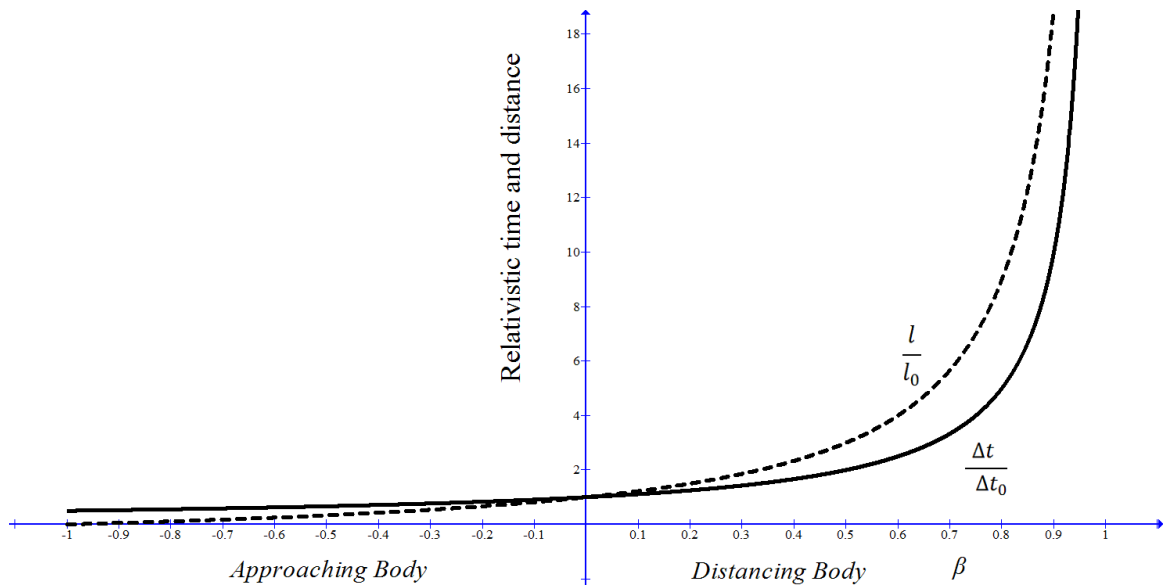


Figure2: Relativistic time and distance as a function of β

2.3 Relativity of mass and kinetic energy

Let us assume that that the rod has a total rest-mass m_0 distributed uniformly along the x axis.

According to eq. 15 an approaching rod will contract causing the mass density along the x axis to increase. On the other hand, a distancing rod will extend causing its mass density along the x axis to dilute. Denote the body's density in its rest-frame by ρ' , then its mass density distribution will be given by $\rho' = \frac{m_0}{A l_0}$, where A is the area of the body's cross section, perpendicular to the direction of

movement. In F the density is given by: $\rho = \frac{m_0}{Al}$, where l is the object's length in F . Using the distance transformation (eq. 15) we can write:

$$\rho = \frac{m_0}{Al} = \frac{m_0}{A l_0 \left(\frac{1+\beta}{1-\beta}\right)} = \rho_0 \left(\frac{1-\beta}{1+\beta}\right) \quad \dots (17)$$

Or,

$$\frac{\rho}{\rho_0} = \frac{1}{l/l_0} = \frac{1+\beta}{1-\beta} \quad \dots (18)$$

As could be seen from eq. 18 the relativistic mass density is inversely proportional to the distance transformation. It is predicted to increase for approaching bodies and a decrease for distancing bodies. The relativistic kinetic energy density is given by:

$$e_k = \frac{1}{2} \rho v^2 = \frac{1}{2} \rho_0 c^2 \frac{(1-\beta)}{(1+\beta)} \beta^2 = e_0 \frac{(1-\beta)}{(1+\beta)} \beta^2 \quad \dots (19)$$

Where $e_0 = \frac{1}{2} \rho_0 c^2$.

For $\beta \rightarrow 0$ (or $v \ll c$) eq. 18 reduces to $\rho = \rho_0$ and eq. 19 reduces to $e = \frac{1}{2} \rho_0 v^2$, which are the classical Newtonian expressions.

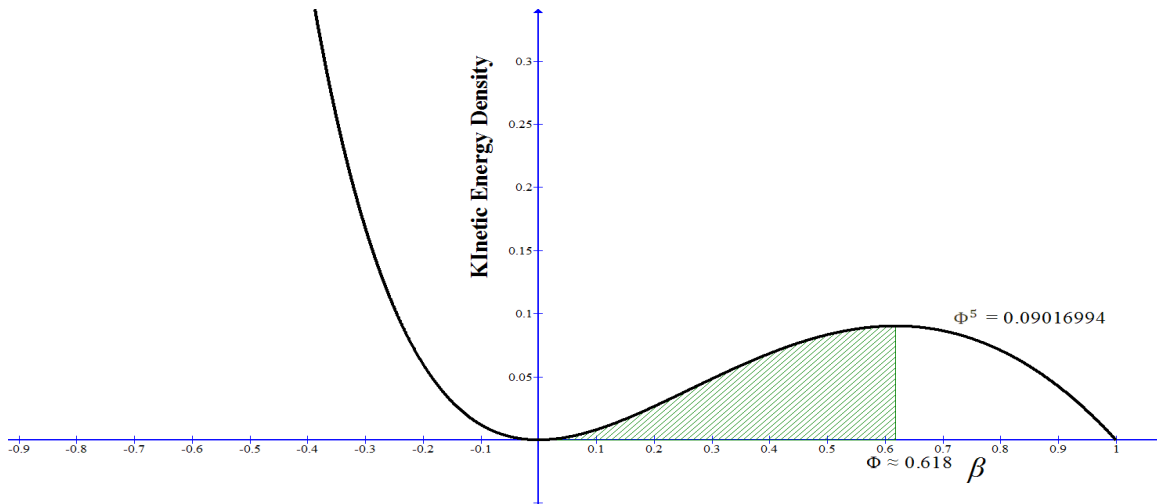


Figure 3. Kinetic energy density as a function of velocity

As shown by Figure3 the relativistic kinetic energy density for *approaching* bodies is predicted to increase with β , up to infinitely high density values as $\beta \rightarrow -1$. Strikingly, for distancing bodies the kinetic energy displays a non-monotonic behavior. It increases with β up to a maximum at velocity $\beta = \beta_{cr}$, and then decreases to zero at $\beta = 1$. Calculating β_{cr} is obtained by deriving eq. 25 with respect to β and equating the result to zero, yielding:

$$\beta^2 + \beta - 1 = 0 \quad \dots (20)$$

Which solves for:

$$\beta_{cr} = \frac{\sqrt{5}-1}{2} = \Phi \approx 0.618 \quad \dots (21)$$

Where Φ is the famous Golden Ratio [20, 21]. Substituting β_{cr} in the energy expression (eq. 19) yields:

$$(e_k)_{max} = e_0 \Phi^2 \frac{1-\Phi}{1+\Phi} \quad \dots (22)$$

From eq. 20 we can write: $\Phi^2 + \Phi - 1 = 0$, which implies $1 - \Phi = \Phi^2$ and $1 + \Phi = \frac{1}{\Phi}$.

Substitution in eq. 22 gives:

$$(e_k)_{max} = \Phi^5 e_0 \approx 0.09016994 e_0 \quad \dots (23)$$

Table 1 depicts the four derived transformations. In the table, the variables Δt_0 , Δx_0 , and ρ_0 denote measurements of time duration, distance, and the body's mass density in the rest frame, respectively, $\beta = \frac{v}{c}$, and $e_0 = \frac{1}{2} \rho_0 c^2$.

Table 1

Information Relativity Transformations

Physical Term	Relativistic Expression
Time	$\frac{\Delta t}{\Delta t_0} = \frac{1}{1-\beta}$ (I)
Distance	$\frac{l}{l_0} = \frac{1+\beta}{1-\beta}$ (II)
Mass	$\frac{\rho}{\rho_0} = \frac{1-\beta}{1+\beta}$ (III)
Kinetic energy	$\frac{e_k}{e_0} = \frac{1-\beta}{1+\beta} \beta^2$... (IV)

The transformations in the table have nice and important properties: (1) they are beautiful, with astonishing Golden Ratio symmetries. (2) They are very simple. (3) They are *scale independent with respect to the size of the investigated physical system*, and thus apply to the dynamics of very small and very large bodies (4) they depend only on the ratio between the relative velocity v and the velocity of the information carried, rendering it applicable to classical systems, such as acoustic and seismic systems, provided that the information carrier's velocity (e.g., sound, seismic waves) travel faster than the relative velocity (i.e., $\beta = \frac{v}{v_c} < 1$). (5) For low velocities ($\beta \ll 1$), all the transformations reduce to the classical Newtonian formulas.

2.4 Symmetries

Before we apply the theory to quantum phenomena, we like to make a brief note about the aesthetic golden ratio of the derived transformations. This type of symmetry, is found in abundance in nature and in technology and the arts, including in the structure of plants [22-24], physics [25-27], structure of the human brain [28], music [29-30], aesthetics [20, 21, 31], and more. The Golden Ratio

symmetry manifest in the kinetic energy function is also manifest, albeit in a more subtle way, in the transformations of time, distance and mass density. As examples, it could be verified that:

$$\frac{\Delta t}{\Delta t_0}(\beta = \Phi) = \Phi + 2 \approx 2.618 \quad \dots(24)$$

$$\frac{l}{l_0}(\beta = \Phi) = \frac{1}{2\Phi - 1} \approx 4.236 \quad \dots (25)$$

$$\frac{\rho}{\rho_0}(\beta = \Phi) = 2\Phi - 1 \approx 0.236 \quad \dots (26)$$

Notably $\frac{\Delta t}{\Delta t_0}(\beta = \Phi) - \frac{l}{l_0}(\beta = \Phi) = \frac{1}{2\Phi - 1} - (\Phi + 2) = \Phi + 1 \approx 1.618$. Other simple symmetries are also

revealed. For example, it is easy to show that the derivatives with respect to β of the relative time:

$$\tau \triangleq \frac{\Delta t}{\Delta t'} = \frac{1}{1 - \beta} \text{ satisfies the simple recursion:}$$

$$\begin{cases} \tau^{(n)} = a_n \tau^{(n-1)} \\ a_n = n a_{n-1} \end{cases} \quad (n = 1, 2, 3, \dots; a_0 \triangleq 1) \quad \dots (27)$$

Where $\tau^{(n)}$ denotes the n^{th} derivative of τ with respect to β ; which could be simplified to yield:

$$\tau^{(n)} = n! \tau^{n+1} \quad (n = 1, 2, 3, 4). \quad \dots (28)$$

For the first five derivatives we get: $\tau^{(1)} = \tau^2$; $\tau^{(2)} = 2 \tau^3$; $\tau^{(3)} = 6 \tau^4$; $\tau^{(4)} = 24 \tau^5$; $\tau^{(5)} = 120 \tau^6$; ($\tau = \frac{1}{1 - \beta}$). The distance transformation has also some nice symmetries. Denoting $\frac{l}{l_0}(\beta)$

by $\delta(\beta)$, we can write:

$$\delta(\beta) \delta(-\beta) = 1 \quad \dots (29)$$

Using relationship in eq. 15 we can also write:

$$\delta(\beta) = \frac{1+\beta}{1-\beta} = \frac{1}{\frac{1-\beta}{1+\beta}} = \frac{\tau(\beta)}{\tau(-\beta)} \quad \dots (30)$$

Moreover, calculating the n^{th} derivative of $\delta(\beta)$ with respect to β yields:

$$\delta^{(n)} = 2n! \tau^{n+1} \quad (n = 1, 2, 3, \dots). \quad \dots (31)$$

Which by using eq. 28 yields:

$$\delta^{(n)} = 2\tau^{(n)} \quad (n = 1, 2, 3, \dots) \quad \dots (32)$$

3. Application to quantum physics

Ostensibly theories of local realism are forbidden by Bell's inequality from being candidates for reproducing the confirmed predictions of quantum mechanics [32, 33]. However, as mentioned previously, information relativity uncovers a novel type of spatial locality not accounted for by Bell's Theorem and its many tests [34-38]. As remarked in section 2 and shown in detail in [39], at sufficiently high velocities the predicted relativistic extension or "stretch" can produce spatial locality even when the temporal locality, forbidden by Bell's theorem, is impossible. To substantiate our claim we shall demonstrate hereafter that information relativity can reproduce and explain quantum results. The two phenomena to be discussed hereafter are quantum phase-transition and matter-wave duality. As will be seen their explanation emerges from direct inspection of the derived energy density term. The prediction (and explanation) of quantum entanglement is more elaborate [see 39].

3.1 Quantum criticalness and quantum phase transition

Investigation of the theory's prediction of quantum criticalness and quantum phase transition could be inferred directly by looking at Fig. 3. As could be seen in the figure for the range $(-1 < \beta < \Phi)$ the relationship between the relativistic kinetic energy density and velocity is semi-classical, in the sense

that higher velocities of approaching bodies are associated with higher kinetic energies density. At a critical $\beta = \Phi$, the positive monotonicity breaks down and higher velocities are associated with lower kinetic energy density. This reversal in the dependence of kinetic energy density is a product of the relative effects of velocity and matter density on the energy density of a distancing body ($\beta > 0$). Up to $\beta = \Phi$ the velocity's positive effect (proportional to β^2) dominates the negative effect caused by the relativistic dilution of matter density (see eq. III). For $\beta = \Phi$ the two opposing effects become equal, and for $\beta > \Phi$ the effect of matter density dilution dominates the effect of increase in velocity, causing matter to behave in non-classical manner. The seeming contradiction between the explanation above and the law of energy conservation will be clarified in the following section. The critical velocity $\beta = \Phi$ is characterized by several fascination symmetries, in the transformation of time, distance, matter density and energy.

Strikingly the above prediction of quantum criticalness at the Golden Ratio confirms with a recent experimental result by Coldea *et al.* [26] who demonstrated that applying a magnetic field at right angles to an aligned chain of cobalt niobate atoms, makes the cobalt enter a quantum critical state, in which the ratio between the frequencies of the first two notes of the resonance equals the Golden Ratio. Moreover, the obtained value of the normalized kinetic energy density $(e_k)_{max}/e_0 = \Phi^5 \approx 0.09016994$ is precisely equal to Hardy's maximum probability of obtaining an event which contradicts local realism [40].

3.2 Matter-wave duality

The concept of matter-wave duality is central to quantum theory, ever since 1924, when Louis de Broglie introduced the notion in his doctoral dissertation [41, 42]. This feature of quantum dynamics has been demonstrated in many double-slit experiments on photons, electrons, atoms, and molecules [43-46]. The quantum mechanical model of De Broglie, although insightful and successful in accounting for the experimental evidence, remains largely hypothetical. In particular, de Bruglie's

assumption for the existence of matter's wave is a mere conjecture, and so is his assumption regarding the coexistence at any given time of both the wave and matter components.

Here we show that information relativity theory sheds a new light on matter-wave duality by demonstrating how it evolves quite naturally from relativistic considerations. For this purpose consider a particle of rest mass m_0 which travels along the positive x axis, with constant velocity v away from an observer. We define the wave energy density e_w as the difference between the Newtonian classical kinetic energy density term and its relativistic term. That is:

$$\begin{aligned}
 e_w &\triangleq e_0 - e_k = \frac{1}{2} \rho_0 v_c^2 \beta^2 - \frac{1}{2} \rho_0 v_c^2 \frac{1-\beta}{1+\beta} \beta^2 \\
 &= \left(\frac{1}{2} \rho_0 v_c^2 \right) \frac{2\beta^3}{1+\beta} = \frac{2\beta^3}{1+\beta} e_0 \quad \dots (33)
 \end{aligned}$$

Where $e_0 = \frac{1}{2} \rho_0 v_c^2$.

The accompanying wave energy density alongside with the matter kinetic energy density is depicted in Fig.4.

As conjectured by de Broglie, for bodies moving with fixed velocity β the matter and wave energies are in a state of equilibrium. The predicted wave-energy component of the total energy carried by a moving body is rapidly increasing with velocity (see Fig. 4). At relatively low velocities, the bulk of the particle's energy is carried by its matter, while at high enough velocities the particle's energy is carried by its accompanying wave. The energy carried by matter, and the energy carried by the wave, are predicted to be equal precisely at $\beta = \frac{1}{3}$, after which the matter becomes very diluted and the accompanying wave becomes the primary carrier of the total energy.

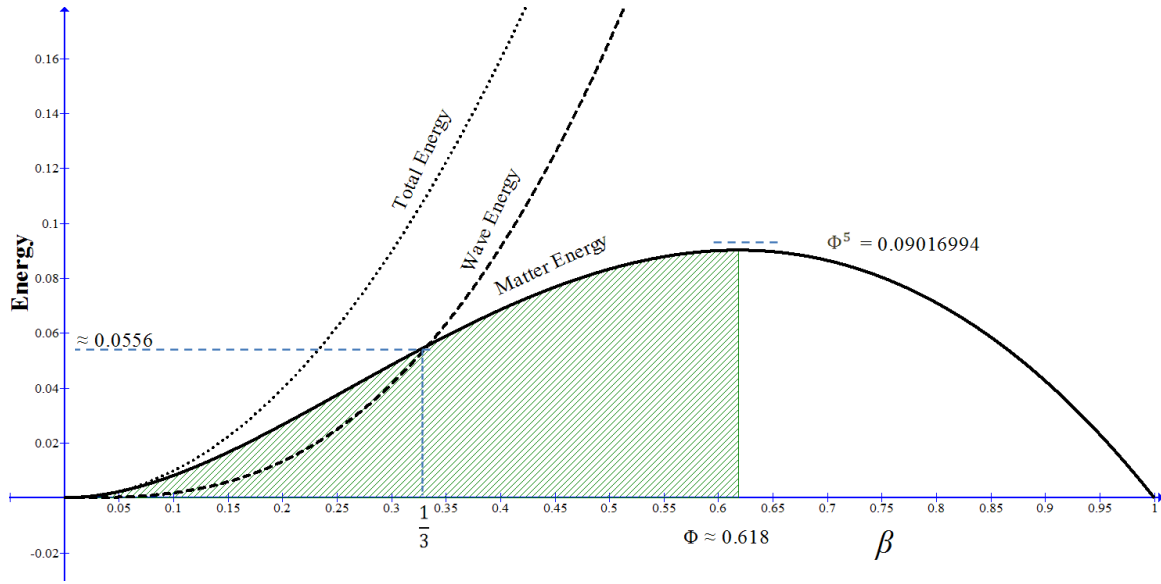


Figure 4. Matter energy and wave energy as functions of velocity

While our relativistic approach to matter-wave duality is completely different from the one taken by de Broglie, the two models show much similarity. However, our relativistic approach has two important advantages: 1. it is not based on conjectures or assumptions. 2. It gives a complete and testable description of the *dynamic interplay between a body's matter and its accompanying wave, as carriers of the body's total energy*. The dynamics depicted in Fig. 4 suggest that it is not the wave which always guide its dual particle as presumed by de Broglie, but that the two exchanges the roles of leader and follower. As the figure shows, up to $\beta = \frac{1}{3}$ the matter kinetic energy is larger than its accompanying wave energy, suggesting that the matter with its more concentrated and higher energy might lead the wave. On the other hand, for velocities higher than $\beta = \frac{1}{3}$, the bulk of the total energy is carried by the wave, suggesting that in this range the wave plays the leading role as previously conjectured by de Broglie.

4. Summary, other applications and general remarks

Taking an epistemic approach to relativity, we considered an inertial physical system in which signals about physical measurements of time and other physical variables conducted in one reference

frame are transmitted to a receiver moving with relative constant velocity v , by an information carrier with a constant velocity v_c with respect to the transmitter's rest frame ($v_c > v$). Without making any further theoretical assumptions or putting constraints on the systems variables, we derived the relativistic time, distance, mass, and energy expressions, relating measurements transmitted by an information sender, to the corresponding information obtained by the receiver. The derived relativistic distance expression violates the Lorentz principle for distancing bodies, by predicting length extension instead of contraction, but this feature is the one which renders the theory applicable to quantum phenomena, enabling it to reproduce quantum results pertaining to quantum criticality and matter-wave duality. In another paper [39] we demonstrated that the proposed model leads to the prediction that at sufficiently high velocities, distancing bodies can maintain spatial locality, interacting with each other proximally and not at a distance, indicating that at in a typical EPR preparation particles distancing from each other at sufficiently high velocities can become physically entangled, thus resolving the issue of "spooky action at a distance" [47] in favor of Einstein's local realistic view of physical reality.

We mention briefly that the same set of transformations in Table, without alteration or addition of other variables or free parameters yields excellent predictions of several phenomena and experimental findings concerning the dynamics of small particles, including the Michelson-Morley's "null" result, the relativistic lifetime of decaying muons, Sagnac effect, and neutrino velocities reported by OPERA and other collaborations [48, 49].

As mentioned before, the derived time transformation is consistent with the original Doppler Effect. A time dilation at F relative to the time at F' which recedes from F with velocity v is associated with redshift in the emitted wave, whereas time contraction at F relative to the time at F' which approaches F is associated with blueshift in the emitted wave. This match renders the theory useful for relativistic cosmology. For this purpose in [50] and [51] we expressed the set of transformations in Table 1 in terms of redshift instead of velocity. In the constructed cosmological model β is

interpreted as the recession velocity of some cosmological structure, such as a galaxy receding from Earth, while emitting light or other electromagnetic waves that are received by an observer on Earth. Using Doppler's formula we found that the recession velocity β in terms of redshift z could be written as: $\beta = \frac{z}{1+z}$ [50]. The resulting transformation in terms of z for time, distance and matter density are the simple functions $z+1$, $2z+1$, and $\frac{1}{2z+1}$, respectively. The kinetic and wave energy in terms of redshift are plotted on a logarithmic scale in Figure 5. What is of interest in the present paper is the similarity between the dynamics described here for the quantum sector and the dynamics revealed at the cosmic scale. The simplicity and golden ration beauty of the theory's cosmological model could not be ignored. The cosmological model in Fig.5 predicts that the density of normal energy reaches a maximum at redshift and wave energy (which we refer to in the model's cosmology as the "unobserved" or "dark" energy) are predicted to be equal at redshift $z = \frac{1}{2}$, which corresponds to a recession velocity of $\beta = \frac{1}{3}$.

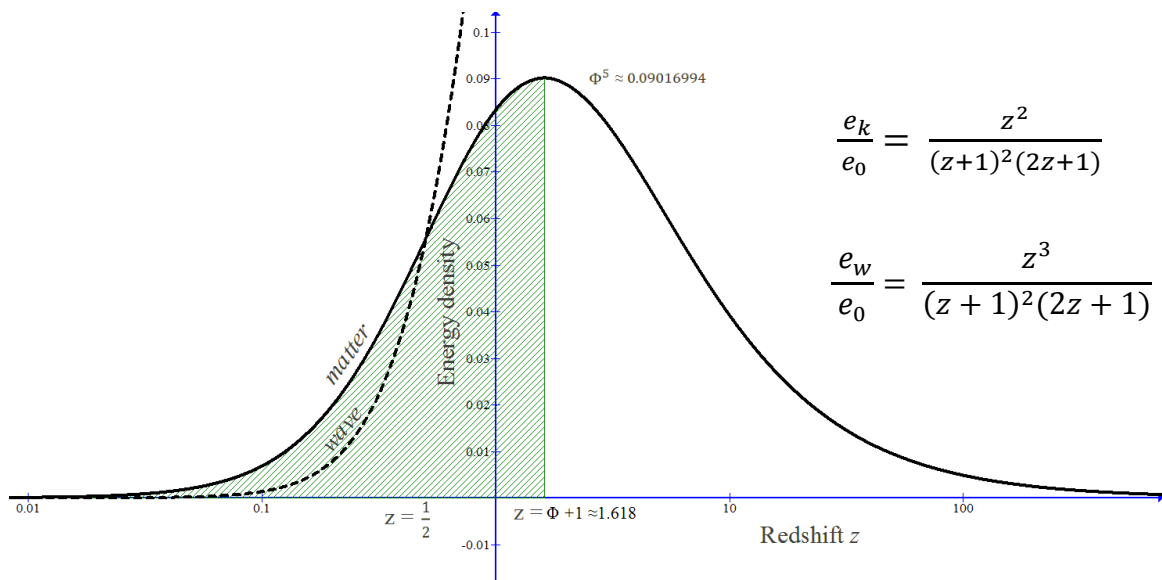


Figure 5: Densities of matter kinetic energy and wave energy as functions of redshift z

In [50] and [51] we show that the above summarized model is successful in accounting for several important cosmological findings, including the pattern of recession velocity predicted by inflationary theories, the amounts of matter and dark energy in various segments of redshift, reported in recent Λ CDM cosmologies, the GZK energy suppression phenomenon. The main point to be stressed here is that the proposed model of information relativity, just like Newton-Galileo physics, does not "discriminate" between physical systems depending on their scale. Put succinctly, we argue that the laws of physics, agreed to be the same everywhere, are also the same for everything (i.e., for all bodies of mass regardless of their rest mass).

We conclude by underscoring the simplicity and beauty of the derived expression. Isaac Newton, Albert Einstein, Paul Dirac, Robert Penrose, and others, have emphasized the importance of the mathematical simplicity and beauty in theorizing about the physics of the world, which they believed to be harmonious and simple. Such emphasis seems needed today given the intolerable complexity and ugliness of most current theories and the apathy of physicists to increasing mathematical complexity. We believe the appearance of Golden Ratio and other beautiful symmetries in numerous phenomena in physics and in life forms might be associated with some optimal self-organization processes common to all dynamical systems in equilibrium.

References

- [1] H. Atmanspacher (2000): Ontic and epistemic descriptions of chaotic systems. In D. Dubois (ed.). *Computing anticipatory systems*. (pp. 465–478). American Institute of Physics, New York (2000).
- [2] Fetzer J.H., and Almeder R.F. *Glossary of Epistemology/Philosophy of Science*. Paragon House, New York (1993).
- [3] Pusey, M. F., Barrett, J., & Rudolph, T. The quantum state cannot be interpreted statistically. e-print arXiv: 1111.3328, 2011.

- [4] Colbeck, R., & Renner, R. Is a system's wave function in one-to-one correspondence with its elements of reality? *Phys. Rev. Lett.* 108, 150402, 2012.
- [5] Hardy, L. Are quantum states real? *International Journal of Modern Physics B*, 27 (1), 1345012. DOI: 10.1142/S0217979213450124, 2013.
- [6] Caves, C. M., Fuchs, C. A. & Schack, R. Quantum probabilities as Bayesian probabilities. *Phys. Rev. A*, 65, 022305, 2002.
- [5] Spekkens, R. W. Evidence for the epistemic view of quantum states: A toy theory. *Phys. Rev. A*, 75, 032110, 2007.
- [7] Spekkens, R. W. In defense of the epistemic view of quantum states. [quant-ph/0401052](https://arxiv.org/abs/quant-ph/0401052).
- [8] Fuchs, C. A. Quantum Mechanics as Quantum Information, Mostly. *J. Mod. Opt.*, 50, 987, 2003.
- [9] Fuchs, C. A. Quantum Mechanics as Quantum Information (and only a little more), [arXiv:quant-ph/0205039v1](https://arxiv.org/abs/quant-ph/0205039v1), 2002.
- [10] Amelino-Camelia, G. Testable scenario for relativity with minimum length. *Physics Letters B* 510, 255–263 (2001).
- [11] Amelino-Camelia, G. Doubly-special relativity: first results and key open problems. *International Journal of Modern Physics D* 11 (10), 1643–1669 (2002).
- [12]. Magueijo, J. & Smolin, L. *Phys. Rev. Lett.* 88, 190403 (2002).
- [13] Amelino-Camelia, G. Doubly-special relativity: facts, myths and some key open issues. *Symmetry* 2, 230-271(2010)
- [14] Einstein, A., Podolsky, B., & Rosen, N. Can quantum-mechanical description of physical reality be considered complete? *Physical Review*, 47, 777-780, 1935.
- [15] Zeilinger A. A Foundational Principle for Quantum Mechanics. *Foundations of Physics* 29 (4), 631-643 (1999).
- [16] Rodrigues Jr. W.A., Rosa M. A. F. The meaning of time in the theory of relativity and Einstein's later view of the Twin Paradox. *Foundations of Physics* 19 (6), 705-724 (1989).

- [17] Pesic, P. Einstein and the twin paradox. *European Journal of Physics* 24, 585-590 (2003).
- [18] O'Connor J. J., Roberston E. F. Christian Andreas Doppler- MacTutor History of Mathematics archive. University of St. Andrews (1998).
- [19] Maulik D. Doppler Ultrasound in Obstetrics and Gynecology. Springer-Verlag (2005).
- [20] Olsen S. *The Golden Section*. New York, Walker & Co. (2006).
- [21] Livio M. *The Golden Ratio: The Story of Phi, the World's Most Astonishing Number*. New York, Broadway Books (2002).
- [22] Douady, S., Couder, Y. Phyllotaxis as a physical self-organizing growth process. *Physical Review Letters* 68 (13), 2098- 2101 (1992).
- [23] Klar, A. J. S. Fibonacci's flowers. *Nature*, 417, 595 (2002).
- [24] Zeng I., Wang G. Modeling golden section in plants. *Progress in Natural Science* 19, 255–260 (2009).
- [25] Affleck, I. Golden ratio seen in a magnet. *Nature* 464 (18), 362-363 (2010).
- [26] Coldea R., Tennant D. A., Wheeler E. M., Wawrzynska E., Prabhakaran D., Telling M., Habicht K., Smeibidl P., Kiefer K. Quantum criticality in an Ising chain: Experimental evidence for emergent E8 symmetry. *Science*, 327 (5962), 177–180 (2010).
- [27] Stoudenmire E. M., Clarke D. J., Mong R. S., K., and Alicea, J. Assembling Fibonacci anyons from a Z3 parafermion lattice model. *Physical Review B* **91**, 235112 (2015)
- [28] Kopell, N. J., & Whittington, M. A. Temporal interactions between cortical rhythms. *Frontiers in Neuroscience*, 2 (2), 145-154 (2008).
- [29] Hammel, G. T., & Vaughan, K. C. *Math and Music: Harmonious Connections*. Dale Seymour Publications (1995).
- [30] John F. Putz .The golden section and the piano sonatas of Mozart. *Mathematics Magazine* 68 (4), 275-282 (1995).

- [31] Pittard, N., Ewing, M., & Jevons, C. Aesthetic theory and logo design: examining consumer response to proportion across cultures. *International Marketing Review*, 24(4), 457- 473 (2007).
- [32] Bell, J. S. On the Einstein Podolsky Rosen paradox, *Physics*, 1 (3), 195 – 200 (1964).
- [33] Bell, J.S. Speakable and unspeakable in quantum mechanics, 2nd Editionn. *Cambridge University Press*, Cambridge (2004).
- [34] Aspect, A., Dalibard, J. & Roger, G. Experimental test of Bell's Inequalities using time- varying analyzers. *Phys. Rev. Lett.* 49, 1804-1807 (1982).
- [35] Weihs, G., Jennewein, T., Simon, C., Weinfurter, H. & Zeilinger, A. Violation of Bell's Inequality under strict Einstein locality conditions. *Phys. Rev. Lett.* 81, 5039-5043 (1998).
- [36] Matsukevich, D. N., Maunz, P., Moehring, D. L., Olmschenk, S. & Monroe, C. Bell Inequality Violation with Two Remote Atomic Qubits. *Phys. Rev. Lett.* 100, 150404 (2008).
- [37] Giustina, M. et al. Bell violation using entangled photons without the fair-sampling assumption. *Nature* 497, 227-230 (2013).
- [38] Hensen et al. Loophole-free Bell inequality violation using electron spins separated by 1.3 kilometers, *Nature*, 562, 682-686 526 (2015).
- [39] Suleiman R. If God plays dice, must we do the same? Quantum phase transition and quantum entanglement as deterministic phenomena. Paper presented at the *4th International Conference on New Frontiers in Physics (ICNFP)*, 24-30 Aug. 2015. <http://vixra.org/pdf/1505.0147v4.pdf>.
- [40] Hardy L. Nonlocality of a single photon revisited. *Phys. Rev. Lett.*, 73, 2279–2283 (1994).
- [41] de Broglie, L. Waves and quanta. *Nature*, 112, 540 (1923).
- [42] de Broglie, L. The reinterpretation of wave mechanics, *Foundations of Physics* 1, 5-15 (1970).

- [43] Neder I., Ofek N., Chung Y., Heiblum M., Mahalu D., and Umansky V. . Interference between two indistinguishable electrons from independent sources. *Nature* 448, 333-337 (2007).
- [44] Carnal O, Mlynek, J. Young's double-slit experiment with atoms: A simple atom interferometer. *Phys. Rev. Lett* 66 (21), 2689- 2692 (1991).
- [45] Akoury, D. et al. The Simplest double slit: Interference and entanglement in double photoionization of H₂. *Science* 318 (5852), 949-952 (2007).
- [46] Canton S. E., Plésiat e., Bozek J. D., Rude B. S., Decleva P., Martin F.,and Berry S. Direct observation of Young's double-slit interferences in vibrationally resolved photoionization of diatomic molecules. *PNAS* 108 (18), 7302 -7306 (2011).
- [47] Letter from Einstein to Max Born, 3 March 1947; The Born-Einstein Letters; Correspondence between Albert Einstein and Max and Hedwig Born from 1916 to 1955, Walker, New York, 1971.
- [48] R. Suleiman, Information Relativity Theory and its application to time and distance (Unpublished manuscript). <http://vixra.org/pdf/1504.0154v2.pdf>.
- [49] Suleiman, R. A complete relativity theory predicts with precision the neutrino velocities reported by OPERA, MINOS, and ICARUS. *Progress in Physics* 4, 53-56 (2013).
- [50] Suleiman R. The Dark Side Revealed: A Complete Relativity Theory Predicts the Content of the universe. *Progress in Physics* 4, 34-40 (2013).
- [51] Suleiman, R. A simple relativistic cosmology of the universe. Paper presented at the *International Conference on Relativistic Astrophysics: celebrating 100 years of Einstein's general relativity theory*, Lahore, Pakistan, Feb.10-14, 2015. <http://vixra.org/pdf/1408.0002v5.pdf>.