

# **The Transition from Pre octonionic to octonionic Gravity and how it may be pertinent to a re do of the HUP for metric tensors**

A. Beckwith<sup>1</sup>

1) abeckwith@uh.edu, Chongqing University department of physics; Chongqing, PRC, 400044;

## **Abstract**

The quantum gravity problem that the notion of a quantum state, representing the structure of spacetime at some instant, and the notion of the *evolution* of the state, does not get traction, since there are no real “instants”, is avoided by having initial Octonionic geometry embedded in a larger, non linear “pilot model” (semi classical) embedding structure. The Penrose suggestion of re cycled space time avoiding a ‘big crunch’ is picked as the embedding structure, so as to avoid the ‘instants’ of time issue. Getting Octionic gravity as embedded in a larger, Pilot theory embedding structure may restore Quantum Gravity to its rightful place in early cosmology without the complication of then afterwards ‘Schrodinger equation ‘ states of the universe, and the transformation of Octonionic gravity to existing space-time is explored via its possible linkage to a new version of the HUP involving metric tensors.

**Key words, Octonionic geometry, Cyclic Conformal cosmology(Penrose), Modified HUP**

## 1. What is special about Octonionic structure. Why should one care about it ?

In [1] Wilson gives a generalized structure as to Octonionic geometry, and it is a generalized way to introduce higher level geometry into the formation of standard model physics. Crowell, in [2] examines its applications as to presumed space-time structure. Also note what is said in [3] The take away from it, is that as quoted from [3], that there exists

quote:

(a linkage to the) *mathematics of the division algebras and the Standard Model of quarks and leptons with  $U(1) \times SU(2) \times SU(3)$  gauge fields*

end of quote:

The division algebras are linked to octonionic structure in a way which is touched upon by Crowell [2], but the main take away is that in the Pre-Planckian space-time regime, that there was specific non commutative structures, as reflected in the document below, which in Pre Planckian space time would eventually become commutative. This development is illustrated in the text below.

The entire transition from Pre Planckian space – time to Planckian space-time would be in tandem with findings by Beckwith, in [4], and [5] as to the physics , as given in both [4,5] that kinetic energy would be greater than potential energy in the Pre Planckian space-time regime, and also to the possibility of a causal discontinuity, as given in [6] which may be linked to the odd situation of which slow roll physics, as usually delineated by [7] becomes dominant,. It is also the considered opinion of the author that  $E_8$  as referenced in [1] as well as [8] in a classical setting which may be linkable to the Octonionic structure , as well as an extension of issues brought up by Lisi in [9] . This is elaborated in greater detail in terms of Octonionic math in [10] by Baez.

Now that we have made note of the geometry, it is time to look at the metric tensor based fluctuations of space time which may be the bridge between the Pre Planckian space-time behavior, and standard Planckian space-time

### 1a. The basic bridge, looking at a basic re do of the HUP, in terms of metric tensors, from [5]

As given in [5] we have that the following fluctuation may be germane to our problem, namely as given by a

Quote from [5] as

#### 1. Examining what happens to Eq. (1) if in Pre Planckian Space time

$$\dot{\phi}^2 \gg V_{SUSY} \text{ due to } \phi \sim \xi^+ \ll M_{Planck}$$

If we look at the Susy potential as given by [11]

$$V(\phi) = \mu^4 \cdot \left[ b \cdot \ln^2 \left( \frac{\phi}{m_{Planck}} \right) + \left( 1 - \left( \frac{\phi}{m_{Planck}} \right)^2 \right)^2 \right] \quad (1)$$

We will be looking at the value of Eq. (1) if  $\phi \sim \xi^+ \ll M_{Planck}$ . In short, we have then that

$$\begin{aligned} (\Delta l)_{ij} &= \frac{\delta g_{ij}}{g_{ij}} \cdot \frac{l}{2} \\ (\Delta p)_{ij} &= \Delta T_{ij} \cdot \delta t \cdot \Delta A \end{aligned} \quad (1a)$$

If we use the following, from the Roberson-Walker metric [11,12,13].

$$\begin{aligned} g_{tt} &= 1 \\ g_{rr} &= \frac{-a^2(t)}{1-k \cdot r^2} \\ g_{\theta\theta} &= -a^2(t) \cdot r^2 \\ g_{\phi\phi} &= -a^2(t) \cdot \sin^2 \theta \cdot d\phi^2 \end{aligned} \quad (2)$$

Following Unruth [14,15], write then, an uncertainty of metric tensor as, with the following inputs

$$a^2(t) \sim 10^{-110}, r \equiv l_p \sim 10^{-35} \text{ meters} \quad (3)$$

Then, the surviving version of Eq. (1) and Eq. (2) is, then, if  $\Delta T_{tt} \sim \Delta \rho$  [11, 14, 15]

$$\begin{aligned} V^{(4)} &= \delta t \cdot \Delta A \cdot r \\ \delta g_{tt} \cdot \Delta T_{tt} \cdot \delta t \cdot \Delta A \cdot \frac{r}{2} &\geq \frac{\hbar}{2} \\ \Leftrightarrow \delta g_{tt} \cdot \Delta T_{tt} &\geq \frac{\hbar}{V^{(4)}} \end{aligned} \quad (4)$$

This Eq. (4) is such that we can extract, up to a point the HUP principle for uncertainty in time and energy, with one very large caveat added, namely if we use the fluid approximation of space-time [16]

$$T_{ii} = \text{diag}(\rho, -p, -p, -p) \quad (5)$$

Then by [11]

$$\Delta T_{tt} \sim \Delta \rho \sim \frac{\Delta E}{V^{(3)}} \quad (6)$$

$$\text{Then, } \delta t \Delta E \geq \frac{\hbar}{\delta g_{tt}} \neq \frac{\hbar}{2} \quad (7)$$

*Unless*  $\delta g_{tt} \sim O(1)$

This Change in the HUP, as outlined above, will be part and parcel of the transformation from Pre Octonionic space time, to Octonionic, i.e. from Pre Planckian to Planckian physics, with all the resulting consequences, which will be outlined below

Before doing so, we say something about the introduction of what is meant by a metric tensor to begin with.

## 1b. Introduction to the Metric Tensor as contribution to Quantum Gravity: What is quantum gravity? Does Quantum Gravity have relevance to Planckian physics?

In general relativity the metric  $g_{ab}(x, t)$  is a set of numbers associated with each point which gives the distance to neighboring points. I.e. general relativity is a classical theory. The problem is that in quantum mechanics physical variables, either as in (QED) electric and magnetic fields have uncertainty as to their values. As is well known if one makes an arbitrary, high accuracy position measurement of a quantum particle, one has lack of specific momentum values. I.e. its velocity. In octonion geometry, the commutation relationships are well defined. There is through a bridge between the classical regime of space time and its synthesis leading to a quantum result. It would be appropriate to put in specific constraints. Note that as an example in gauge theories, the idea is to use 'gauge fixing' to remove the extra degrees of freedom. The problem is though that in quantum theory, the resulting theory, (i.e. a quantum gravity theory) may not be independent of the choice of gauge. Secondly.....

In GR, it is possible to extract a time for each solution to the Einstein equations by DE parametrizing GR. Then the problem is, in quantum versions of cosmology that if space-time is quantized along these lines, the assumption (of evolving then quantizing) does not make sense in anything but an approximate way. That is, the resulting evolution does not generate a classical space-time! Rather, solutions will be wave-functions (solutions of some Schrödinger-type equation). What is being attempted HERE is to describe the limits of the quantum process so as to avoid having space time wave functions mandated to be Schrodinger clones. I.e. to restore quantum behavior as the geometric limit of specialized space time conditions.

Here is a problem. (In some approaches to canonical gravity, one fixes a time *before* quantizing, and quantizes the spatial portions of the metric only). Frankly fixing time before quantizing and then applying QM to just the spatial part is missing the point. If Quantum gravity is valid, then the commutation relationships in a definite geometric limit must hold. The paper refers to these regimes of space time where the octonionic commutation relations DO hold. The assertion made, is that before Planck temperature is reached, i.e. there is a natural embedding of space time geometry with the octonionic structure reached as the initial conditions for expansion of the present universe.

The premise followed in the paper is that before the Planckian regime, there are complex geometrical relationships involving quantum processes, but that the quantum processes are "hidden from view", due to their combination. The quantum processes are not measurable, in terms of specific quantum mechanical commutation relations until Planck temperature values (very high) are reached in terms of a buildup of temperature from an initially much lower temperature regime. **Appendix A** describes an embedding multi verse in terms of the present universe.

Rovelli [17] notes (2007, p. 1304), that modeling the gravitational field as an emergent, collective variable does not imply an absence of quantum effects, and it is possible that collective variables too are governed by quantum theory. Our re statement of this idea is to say that one has quantum effects emerging in highly specialized circumstances, with collective variables behaving like squeezed states of space time matter. The octonionic gravity regime, obeying quantum commutation behavior has its analog in simplification of collective variable treatment of a gravitational field, which becomes very quantum commutation like in its behavior in the Planck temperature limit. This paper will endeavor as to describe the emergent collective treatment of the gravitational field appropriately so octonionic gravity is a definite limiting structure emerging in extreme temperatures and state density.

## 2. Now about conditions to obtain the relevant data for phase $\delta_0$

This paper examines geometric changes that occurred in the earliest phase of the universe, leading to values for data collection of information for phase  $\delta_0$ , and explores how those geometric changes may be measured through gravitational wave data. The change in geometry is occurring when we have first a pre quantum space time state, in which, in commutation relations [2] (Crowell, 2005) in the pre Octonionic space time regime no approach to QM commutations is possible as seen by.

$$[x_j, p_i] \neq -\beta \cdot (l_{Planck} / l) \cdot \hbar T_{ijk} x_k \quad \text{and does not} \rightarrow i\hbar \delta_{i,j} \quad (8)_-$$

Eq. (8) is such that even if one is in flat Euclidian space, and  $i=j$ , then

$$[x_j, p_j] \neq i \cdot \hbar \quad (8a)$$

In the situation when we approach quantum “octonion gravity applicable” geometry, Eq. (8) becomes

$$[x_j, p_i] = -\beta \cdot (l_{Planck} / l) \cdot \hbar T_{ijk} x_k \xrightarrow{\text{Approaching-flat-space}} i\hbar \delta_{i,j} \quad (9)$$

Eq. (9) is such that even if one is in flat Euclidian space, and  $i=j$ , then

$$[x_j, p_j] = i \cdot \hbar$$

.Also the phase change in gravitational wave data due to a change in the physics and geometry between regions where Eq. (8) and Eq. (9) hold will be given by a change in phase of GW, which may be measured inside a GW detector.

## 2a. Discussion of the geometry alteration due to the evolution from pre Planckian to Planckian regimes of space time

The simplest way to consider what may be involved in alterations of geometry is seen in the fact that in pre **octonionic** space time regime (which is Pre Planckian), one would have [2] (Crowell, 2005)

This Pre Octonionic space-time behavior should be seen to be separate from the flatness condition as referred to in [18]. But retuning to [2] we have that, in Pre Planckian space- time, that

$$[x_j, x_i] \neq 0 \quad \text{Under ANY circumstances, with low to high temperatures, or flat or curved space.} \quad (10)$$

Whereas in the octonion gravity space time regime where one would have Eq. (9) hold that for enormous temperature increases (9), then by [2] (Crowell, 2005)

$$[x_j, x_i] = i \cdot [\ominus_{ji}] \xrightarrow{\text{Temp} \rightarrow \infty} 0 \quad (11)$$

Here,

$$\Theta_{ji} \sim \Lambda_{NC}^{-2} \sim [\Lambda_{4-Dim}]^{-2} \propto 1/[T^{2\beta}] \xrightarrow{T \rightarrow \infty} 0 \quad (11a)$$

Specifically Eq. (8) and Eq. (10) will undergo physical geometry changes which will show up in  $\delta_0$ . The space time shift from pre Planck to the Planck epoch has gravity wave background radiation containing the imprint of the very earliest event. Next, is to consider what happens if Quantum (octonionic geometry) conditions hold. The supposition as given by in [19] (Lee, 2010)

*Considering all these recent developments, it is plausible that quantum mechanics and gravity has information as a common ingredient, and information is the key to explain the strange connection between two.*

When quantum geometry holds, as seen by Eq. (9) and Eq. (11), GW information is loaded into the **octonion** space time regime, and then transmitted to the present via relic GW which identified via the phase shift in GW as measured in a GW detector. This phase shift is  $\delta_0$ . The following flow chart is a bridge between the two regimes of [2] (Crowell, 2005) the case where the commutators for QM hold and then again to where the commutators for QM do not hold at all.

$$[x_j, p_i] \neq -\beta \cdot (l_{Planck} / l) \cdot \hbar T_{ijk} x_k \xrightarrow{\text{Transition-to-Planckian-regime}} [x_j, p_i] = -\beta \cdot (l_{Planck} / l) \cdot \hbar T_{ijk} x_k \quad (12)$$

Eq. (12) above represents the transition from pre Planckian to Planckian geometry.

Also questions relating to how pre and post Planckian geometries evolve can be answered by a comparison of how entropy, in flat space geometry is linked with quantum mechanics [19] (Lee, 2010). Once Eq. (12) happens, Beckwith hopes to look at the signals in phase shift  $\delta_0$

$$[x_j, p_i] = -\beta \cdot (l_{Planck} / l) \cdot \hbar T_{ijk} x_k \xrightarrow{\text{Transition-to-release-of-relic-Gravitational-waves-in-flat-space}} \text{Planckian-Era-Generated-GW} \quad (13)$$

Lee's paper [19] (Lee, 2010) gives the details of information theory transfer of information from initially curved space geometry to flat space. When one gets to flat space, then, by Eq. (13) one then has a release of relic GW. The readers are referred to appendix A summarizing the relevant aspects of [19] (Lee, 2010) in connecting space time geometry (initially curved space, of low initial degrees of freedom) to Rindler geometry for the flat space regime occurring when degrees of freedom approach a maxima, initially from  $t > 0s$  up to about  $t < 1s$  as outlined in an argument given in Eq. (14). One of the primary results is reconciling the difference in degrees of freedom versus a discussion of dimensions. Also, as Eq. (12) occurs, there will be a buildup in the number of degrees of freedom, from a very low initial level to a higher one, as in the Gaussian mapping [20] (Beckwith, 2010)

$$x_{i+1} = \exp[-\tilde{\alpha} \cdot x_i^2] + \tilde{\beta} \quad (14)$$

The feed in of temperature from a low level, to a higher level is in the pre Planckian to Planckian thermal energy input as by (Beckwith, 2010a) [21]

$$E_{thermal} \approx \frac{1}{2} k_B T_{temperature} \propto [\Omega_0 \tilde{T}] \sim \tilde{\beta} \quad (15)$$

Eq. (14) would have low numbers of degrees of freedom, with an eventual Gauss mapping up to 100 to 1000 degrees of freedom, as described by (Kolb and Turner, 1990) [21]. The rest of this paper will

be in describing an extension of an idea by [22] (Beckwith, 2011c) which may give multiple universes as put into Eq. (15). And [22] about multiple universes uses [23] explicitly, by Penrose. In reality, what we are doing is equivalent to [24], which has the useful caveat that

Quote

We propose that in time dependent backgrounds the holographic principle should be replaced by the generalized second law of thermodynamics.

End of quote.

As there have been numerous ways to add in an active time component into Pre Planckian space time physics, to Planckian, this substitution of a generalized 2<sup>nd</sup> law of thermodynamics is equivalent to the transformation from Pre Planckian to Planckian space-time, which again is in a 1-1 correlation to when we are doing which is to go to Pre – Octonionic to Octonionic structures, and we will be elaborating upon this point in the next several parts of this manuscript. Starting off with the sequential development of VeV (Vacuum expectation values) and emergent space-time physics.

### 3. Details of the model, in terms of the VeVs used for space time evolution. How to set up cosmological inputs into our universe so as to get appropriate values of $\delta_0$

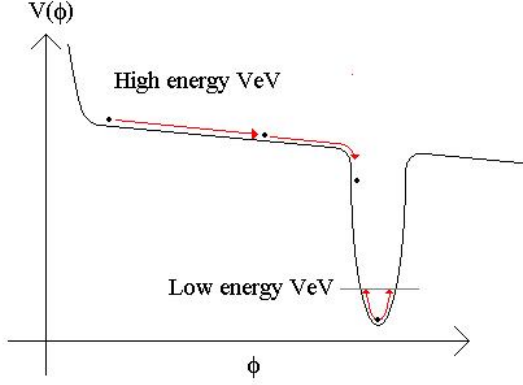
Further elaboration is tied in with a summary of properties of a mutually unbiased basis (MUB), [25] (Chaturvedi, 2007) which is topologically adjusted to properties of flat space Rindler geometry.  $\delta_0$ . The key point is an inter relationship between a change in MUB, from initial highly complex geometric structure, to flat space time, as a new way to quantify a phase transition, for experimentally verifiable detection of  $\delta_0$ . The values of  $\delta_0$  are set by the difference between Renyi entropy [26] ( Salvail, 2009) , and a particle count version of entropy, i.e.  $S \sim \langle n \rangle$ . The topological transition is due to a change in basis / geometry from the regime of Renyi entropy to entropy in a particle count version of entropy, i.e.  $S \sim \langle n \rangle$  [27] (Ng, 2008). As by [28] (Beckwith and Glinka, 2010) (assuming a vacuum energy  $\rho_{vacuum} = [\Lambda/8\pi \cdot G]$  initially), with  $\Lambda$  part of a closed FRW Friedman Equation solution.

$$a(t) = \frac{1}{\sqrt{\Lambda/3}} \cosh\left[\sqrt{\Lambda/3} \cdot t\right] \quad (16)$$

To flat space FRW equation of the form (Beckwith and Glinka, 2010)

$$\left[\frac{\dot{a}}{a}\right]^2 + \frac{1}{a^2} = \frac{\Lambda}{3} \quad (17)$$

Beckwith tried inputs into the initial value of  $\Lambda$  as high energy fluctuations, this  $\rho_{vacuum} = [\Lambda/8\pi \cdot G]$  links initial vacuum expectation value (VeV) behavior with the following diagram. Note that cosmology models have to be consistent with the following diagram.



**Figure 1, as supplied by (Crowell, 2010) [29]**

As stated by [30] (Crowell, 2010), the way to delineate the evolution of the VeV is to consider an initially huge VeV, due to inflationary geometry. Note by Eq. (18), [31] (Poplawski, 2011):

$$\rho_{\Lambda} = H\lambda_{QCD} \quad (18)$$

Where  $\lambda_{QCD}$  is 200MeV and similar to the QCD scale parameter of the SU(3) gauge coupling constant, where H a Hubble parameter. Here if there is a relationship between Eq. (18) above and  $\rho_{vacuum} = [\Lambda/8\pi \cdot G]$  then the formation of inputs into our vacuum expectation values  $V \sim 3\langle H \rangle^4 / 16\pi^2$ , and equating  $V \sim 3\langle H \rangle^4 / 16\pi^2$  with  $V(\phi) \sim \phi^2$  would be consistent with an inflaton treatment of inflation which has similarities to [32] (Kuchiev and Yu, 2008). Then equate vacuum potential with vacuum expectation values as:

$$\rho_{vacuum} = [\Lambda/8\pi \cdot G] \approx \rho_{\Lambda} \approx H\lambda_{QCD} \Leftrightarrow V \sim 3\langle H \rangle^4 / 16\pi^2 \sim V_{inf} \approx \phi^2 \quad (19)$$

Different models for the Hubble parameter,  $H$  exist, and are linked to how one forms the inflaton. The author presently explore what happens to the relations as given in Eq. (14) before, during, and after inflation. **Table 1 below.** Is how to obtain inflation.

#### 4. First, thermal input into the new universe. In terms of vacuum energy

We will briefly allude to temperature drivers which may say something about how thermal energy will be introduced into the onset of a universe. Begin first with [33] (Beckwith, 2008)

$$|\Lambda_{5-dim}| \approx c_1 \cdot (1/T^\alpha) \quad (20)$$

In contrast with the traditional four-dimensional version of the same, as given by [34] (Park, 2002)

$$\Lambda_{4-dim} \approx c_2 \cdot T^\beta \quad (21)$$

If one looks at the range of allowed upper bounds of the cosmological constant, the difference between what [35] (Barvinsky, 2006) predicted, and [34] (Park, 2002) is:



$$\Lambda_{4\text{-dim}} \propto c_2 \cdot T^\beta \xrightarrow{\text{graviton-production-as-time}>t(\text{Planck})} 360 \cdot m_p^2 \ll c_2 \cdot [T \approx 10^{32} \text{ K}]^\beta \quad (22)$$

Right after the gravitons are released, one sees a drop-off of temperature contributions to the cosmological constant. Then for time values  $t \approx \delta^1 \cdot t_p$ ,  $0 < \delta^1 \leq 1$  and integer  $n$  [33] (Beckwith, 2008)

$$\frac{\Lambda_{4\text{-dim}}}{|\Lambda_{5\text{-dim}}|} - 1 \approx \frac{1}{n} \quad (23)$$

Initial phases of the big bang, with large vacuum energy  $\neq \infty$  and  $a(t^*) \neq 0, 0 < a(t^*) \ll 1$ , then

**Table 1: Cosmological  $\Lambda$  in 5 and 4 dimensions (Beckwith, 2008) [33]**

Time $0 \leq t \ll t_p$	Time $0 \leq t < t_p$	Time $t \geq t_p$
$ \Lambda_5 $ undefined,	$ \Lambda_5  \approx \varepsilon^+$ ,	$ \Lambda_5  \approx \Lambda_{4\text{-dim}}$ ,
$T \approx \varepsilon^+ \rightarrow T \approx 10^{32} \text{ K}$	$\Lambda_{4\text{-dim}} \approx$ extremely	$T$ much smaller
$\Lambda_{4\text{-dim}} \approx$ almost $\infty$	large $10^{32} \text{ K} > T > 10^{12} \text{ K}$	$T \approx 10^{12} \text{ K}$

Table 1 may suggest a discontinuity in the pre Planckian regime, for scale factors [35] (Beckwith, 2008).

$$\left[ \frac{a(t^* + \delta t)}{a(t^*)} \right] - 1 < (\text{value}) \approx \varepsilon^+ \ll 1 \quad (24)$$

Furthermore, the assumption is that there is an initial fixed entropy, with  $\bar{N}$  as a nucleated structure in short time interval as temperature  $T_{\text{temperature}} \varepsilon(0^+, 10^{19} \text{ GeV})$  arrives. Then [36] (Beckwith, 2010a)

$$[\Delta S] = [\hbar/T] \cdot \left[ 2k^2 - \frac{1}{\eta^2} \left[ M_{\text{Planck}}^2 \cdot \left[ \left[ \frac{6}{4\pi} - \frac{12}{4\pi} \right] \cdot \left[ \frac{1}{\phi} \right]^2 - \frac{6}{4\pi} \cdot \left[ \frac{1}{\phi^2} \right] \right] \right] \right]^{1/2} \sim n_{\text{Particle-Count}} \quad (25)$$

If the inputs into the inflaton  $\phi$ , as given by a random influx of thermal energy from temperature, we will see the particle count on the right hand side of Eq. (25) as a random creation of  $n_{\text{Particle-Count}}$ . The way to introduce the expansion of the degrees of freedom from zero to  $\mathbf{N(T)} \sim \mathbf{10^2} - \mathbf{10^3}$  is to define the classical and quantum regimes of gravity to minimize the point of the bifurcation diagram affected by quantum processes As by [20, 36] (Beckwith, 2010)

$$\frac{\Delta \tilde{\beta}}{\text{dist}} \cong (5k_B \Delta T_{\text{temp}} / 2) \cdot \frac{\bar{N}}{\text{dist}} \sim qE_{\text{net-electric-field}} \sim \text{Change in degrees of freedom} \quad (26)$$

Eq. (20) is the regime in which we see a thermal increase in temperature, up to the Planckian regime. If so, then we can next look at what is the feeding in mechanism from the **end of a universe, or universes**, and inputs into Eq. (25)

## 5 A new idea extending Penrose's suggestion of cyclic universes, black hole evaporation, and the embedding structure our universe is contained within

Beckwith strongly suspects that there are no fewer than  $N$  universes undergoing Penrose 'infinite expansion' [20, 23] (Penrose, 2006) contained in a mega universe structure. Furthermore, each of the  $N$  universes has black hole evaporation, with the Hawking radiation from decaying black holes. If each of the  $N$  universes is defined by a partition function, called  $\{\Xi_i\}_{i=1}^{i=N}$ , then there exist an information ensemble of mixed minimum information correlated as about  $10^7 - 10^8$  bits of information per partition function in the set  $\{\Xi_i\}_{i=1}^{i=N} \Big|_{before}$ , so minimum information is conserved

between a set of partition functions per universe

$$\{\Xi_i\}_{i=1}^{i=N} \Big|_{before} \equiv \{\Xi_i\}_{i=1}^{i=N} \Big|_{after} \quad (27)$$

However, there is non-uniqueness of information put into each partition function  $\{\Xi_i\}_{i=1}^{i=N}$ . Furthermore Hawking radiation from the black holes is collated via a strange attractor collection in the mega universe structure to form a new big bang for each of the  $N$  universes represented by  $\{\Xi_i\}_{i=1}^{i=N}$ .

Verification of this mega structure compression and expansion of information with a non-uniqueness of information placed in each of the  $N$  universes favors Ergodic mixing treatments of initial values for each of  $N$  universes expanding from a singularity beginning. The  $n_f$  value, will be using [27] (Ng, 2008)  $S_{entropy} \sim n_f \cdot$ . How to tie in this energy expression, as in Eq. (28) (23) will be to look at the formation of a non-trivial gravitational measure as a new big bang for each of the  $N$  universes as by  $n(E_i) \cdot$  the density of states at a given energy  $E_i$  for a partition function. [31]

$$\{\Xi_i\}_{i=1}^{i=N} \propto \left\{ \int_0^{\infty} dE_i \cdot n(E_i) \cdot e^{-E_i} \right\}_{i=1}^{i=N}. \quad (28)$$

Each of  $E_i$  identified with Eq. (28) above are with the iteration for  $N$  universes (Penrose, 2006)

$$\frac{1}{N} \cdot \sum_{j=1}^N \Xi_j \Big|_{j\text{-before-nucleation-regime}} \xrightarrow{\text{vacuum-nucleation-transfer}} \Xi_i \Big|_{i\text{-fixed-after-nucleation-regime}} \quad (29)$$

For  $N$  number of universes, with each  $\Xi_j \Big|_{j\text{-before-nucleation-regime}}$  for  $j = 1$  to  $N$  being the partition function of each universe just before the blend into the RHS of Eq. (29) above for our present universe. Also, each of the independent universes given by  $\Xi_j \Big|_{j\text{-before-nucleation-regime}}$  are constructed by the absorption of one million black holes taking in energy. **I.e., [22, 23] (Penrose, 2006)**

$$\Xi_j \Big|_{j\text{-before-nucleation-regime}} \approx \sum_{k=1}^{Max} \tilde{\Xi}_k \Big|_{\text{black-holes-jth-universe}} \quad (30)$$

## 6. Analysis of the action of these two mappings on the formation of Quantum gravity

In particular, in the regime where there is a buildup of temperature, [2] Crowell, 2005) Eq. (31) gives

$$\oint [x_j, p_i] dx_k \approx -\oint p_i [x_j, dx_k] = -\beta \cdot l_p \cdot T_{j,k,l} \oint p_i dx_l \neq -\hbar\beta \cdot l_p \cdot T_{i,j,k} \quad (31)$$

Very likely, across a causal boundary, between  $\pm l_p$  across the boundary due to the causal barrier, one gets [2] (Crowell, 2005)

$$\oint p_i dx_k \neq \hbar\delta_{i,k}, \oint p_i dx_k \equiv 0 \quad (32)$$

I.e.

$$\oint_{\pm l_p} p_i dx_k \Big|_{i=k} \rightarrow 0 \quad (33)$$

(28)

If so, [2] (Crowell, 2005) the regime of space time, for the feed in of, prior to the introduction of QM, that Eq. (33) in itself would mean that in the pre Planckian physics regime, and in between  $\pm l_p$ , QM no longer applies.

## 7. Formal proof that increase in thermal temperatures as given in Table 1 leads to approaching quantum mechanics

We look at the [37] (Ecker,2007) article as to how to look at the way one may have, if temperatures increase, as stated in **Table 1** above, from a low point to a higher one, for a flattening of space time. This non commutative geometry due to rising temperatures signifies conditions for the emergence of Eq. (4) to become [2] (Crowell, 2005)

$$[x_j, p_i] \xrightarrow{Temp \rightarrow \infty} i\hbar\delta_{i,j} \quad (34)$$

In order to get conditions for Eq. (34) (29) we referred to non-commutative geometry breakdown [37] (Ecker, 2007)

$$[x_j, x_i] = i \cdot \Theta_{ji} \sim i\Lambda_{NC}^{-2} \sim i \cdot [\Lambda_{4-Dim}]^{-2} \propto i/[T^{2\beta}] \xrightarrow{T \rightarrow \infty} 0 \quad (35)$$

When Eq. (35) goes to zero we submit that Eq. (35) is recovering quantum / Octoinian gravity. Eq. (35) above, according to the [37] (Ecker, 2007), page 79, is linkable to initial violations of Lorentz invariance. The claim is that the entire argument of Eq. (35) with rising temperature is a way to understand the removal of non-Euclidian space to approach Euclidian flat space. Beckwith shall next examine how this increasing temperature may lead to an explosion of the degrees of freedom present.

## 8. Understanding how phase shift in Gravitational waves may be affected by the transition to a causal discontinuity, and different models of emergent structure

In research work as given by [38] (Li, and Yang, 2009), [39] (Beckwith, 2010b) outlined in Chongqing November 2010 the following representation of amplitude, i.e. as by reading [38] (Li, and Yang, 2009) the following case for amplitude

$$A_{\otimes} = A_{\oplus} = \tilde{A} \quad (36)$$

Furthermore, first order perturbative terms of an E&M field have its components written as. (Li, and Yang, 2009)

$$\tilde{F}_{0\ 2}^{(1)} = i\tilde{F}_{0\ 1}^{(1)} \quad (37)$$

Secondly, there is a way to represent the "number" of transverse first order perturbative photon flux density as given in an earth bound high frequency GW detector [38] .(Li, and Yang, 2009).

$$n_r^{(1)} = \frac{c}{2\mu_0\hbar\omega_e} \text{Re}\{ \} \quad (38)$$

$$\{ \} = i(\exp[-i\theta]) \cdot \tilde{F}_{0\ 1}^{(1)*} \cdot \left[ \frac{i}{\omega_e} \cdot \left( \frac{\partial\Psi_x}{\partial y} - \frac{\partial\Psi_y}{\partial x} \right) \right] \quad (39)$$

Here the quantity  $\frac{i}{\omega_e} \cdot \left( \frac{\partial\Psi_x}{\partial y} - \frac{\partial\Psi_y}{\partial x} \right)$  represents the z component of the magnetic field of a Gaussian

beam used in an EM cavity to detect GW. We introduce the quantity Q, the quality factor of the detector cavity set up to observe GW, and  $\tilde{A}$ , the experimental GW amplitude. In the simplest case,  $\hat{B}_y^{(0)}$  is a static magnetic field. Then  $\tilde{F}_{0\ 2}^{(1)} = i\tilde{F}_{0\ 1}^{(1)}$  leads to [38] (Li, and Yang, 2009)

$$\tilde{F}_{0\ 1}^{(1)} = i2\tilde{A}\hat{B}_y^{(0)}Q \cdot \left[ \sin\left[\frac{n\pi z}{b}\right] \right] \cdot \exp[i(-\omega_g t + \delta_0)] \quad (40)$$

The formula  $E_{thermal} \approx \frac{1}{2}k_B T_{temperature} \propto \tilde{\beta}$  is a feed into  $\omega_g$  provided time  $t \propto$  Planck time, and

set Eq. (40) with  $\omega_g \sim \omega_g$  by setting up  $E_{thermal} \approx \frac{1}{2}k_B T_{temperature} \approx \tilde{\beta}$  . In other words, for relic GW

production, a interrelationship between  $\tilde{\alpha}$  and  $E_{thermal} \approx \frac{1}{2}k_B T_{temperature} \propto \tilde{\beta}$  for increases in

degrees of freedom. This is a different perspective than what is normally used in analyzing what happens in a transition between initial Planck time  $\sim 10^{-44}$  seconds, and cosmological evolution up to  $10^{-30}$  seconds The next discussion is on research done by [38] ( Li, et al, 2003), as to identifying traces of massive gravitons. [39] (Beckwith, 2011b)

## 9. Re casting the problem of GW / Graviton in a detector for “massive” Gravitons

We now turn to the problem of detection. The following discussion is based upon with the work of Dr. Li, Dr. Beckwith, and other physics researchers in Chongqing University .(Li, et al, 2003), [40] (Beckwith,2010b)[39].. What (Li et al, 2003) [40] have shown in 2003 which Beckwith made an extension (Beckwith, 2011b) [41] is to obtain a way to present first order perturbative electromagnetic power flux, i.e.  $T^{uv}$  in terms of a non-zero four dimensional graviton rest mass, in a detector , in the presence of uniform magnetic field (Li et. al., 2003) [40] , (Beckwith, 2010b) [41] .What if we have curved space time with an energy momentum tensor of the electromagnetic fields in GW fields as given by (Li et. al., 2003) [40] ?

$$T^{uv} = \frac{1}{\mu_0} \cdot \left[ -F_{\alpha}^{\mu} F^{\nu\alpha} + \frac{1}{4} \cdot g^{\mu\nu} F_{\alpha\beta} F^{\alpha\beta} \right] \quad (41)$$

(Li et al, 2003) [40] States that  $F_{\mu\nu} = F_{\mu\nu}^{(0)} + \tilde{F}_{\mu\nu}^{(1)}$ , with  $|\tilde{F}_{\mu\nu}^{(1)}| \ll |F_{\mu\nu}^{(0)}|$  will lead to

$$T^{uv} = T^{uv(0)} + T^{uv(1)} + T^{uv(2)} \quad (42)$$

The 1<sup>st</sup> term to the right side of Eq. (42) is the energy – momentum tensor of the back ground electromagnetic field, and the 2<sup>nd</sup> term to the right hand side of Eq. (42) is the first order perturbation of an electromagnetic field due to the presence of gravitational waves [39] (Beckwith, 2011b and 2011c)

$$J_{effective} \cong n_{count} \cdot m_{4-D-Graviton} \quad (43)$$

As stated [42]  $m_{4-D-Graviton} \sim 10^{-65}$  grams , while  $n_{count}$  is the number of gravitons which may be in the detector sample. What Beckwith and Li intend to do is to isolate out an  $T^{uv(1)}$  assuming a non-zero graviton rest mass. . I.e. use  $\tilde{\beta} \cong |F|$  and make a linkage with  $T^{00(1)}$ . The term  $T^{00(1)}$  isolated out from  $T^{uv(1)}$ . The point is that detected GW helps constrain Eq. (43). If this is done, the next step will be different GW measurement protocols. As one can try working with, using the ideas of [43] we can set

$$h_0^2 \Omega_{GW} \sim 10^{-6} \quad (44a)$$

Next we note the results of using  $h_0^2 \Omega_{GW} \sim 10^{-6}$  in GW measurements

## 10 Wavelength, sensitivity and other such constructions from Maggiore, with our adaptations and comments

We will next give several basic considerations as to early universe geometry which are appropriate as to the [43] (Maggiore, 2000) treatment of both wavelength, strain, and  $\Omega_{GW}$  . The idea will be to look at how the ten to the tenth stretch out of generated wave length may tie in with early universe models. We want to, if  $h_0 = .51 \pm .14$ , understand what affects an expansion of GW wave lengths.

**Table 2: Managing GW generation from Pre Planckian physics [43] (Maggiorie, 2000), [44] (Beckwith, 2011)**

$h_c \leq 2.82 \times 10^{-33}$	$f_{GW} \sim 10^{12} \text{ Hertz}$	$\lambda_{GW} \sim 10^{-4} \text{ meters}$
$h_c \leq 2.82 \times 10^{-29}$	$f_{GW} \sim 10^8 \text{ Hertz}$	$\lambda_{GW} \sim 10^0 \text{ meters}$
$h_c \leq 2.82 \times 10^{-25}$	$f_{GW} \sim 10^4 \text{ Hertz}$	$\lambda_{GW} \sim 10^1 \text{ kilometer}$
$h_c \leq 2.82 \times 10^{-23}$	$f_{GW} \sim 10^2 \text{ Hertz}$	$\lambda_{GW} \sim 10^3 \text{ kilometer}$

What Beckwith expects, [2] Crowell, 2011) is that initial waves, in the Planckian regime have about  $\lambda_{GW} \sim 10^{-14} \text{ meters}$  for  $f_{GW} \sim 10^{22} \text{ Hertz}$  which would turn into  $\lambda_{GW} \sim 10^{-1} \text{ meters}$ , for  $f_{GW} \sim 10^9 \text{ Hertz}$ , and sensitivity of  $h_c \leq 2.82 \times 10^{-30}$ . It is important to note that the  $h_0^2 \Omega_{GW} \sim 10^{-6}$  is the first measurement metric which is drastically altered.  $h_c$  Which is mentioned in **Eq. (44c)** is an upper bound. In reality, only the 2<sup>nd</sup> and 3<sup>rd</sup> columns in table 1 above escape being inaccurate. , since the interactions of gravitational waves / gravitons with quark – gluon plasmas deform by an order of magnitude  $h_c$ . So for table 1, the first column is an upper bound which, even if using **Eq. (44c)** is off by an order of magnitude. More seriously, the number of gravitons per unit volume of phase space is dependent upon  $h_0^2 \Omega_{GW} \sim 10^{-6}$ . If that is changed, **Eq. (44b)** is less valid. Beckwith refers the readers to [44] (Beckwith, 2011c) which gives Eq. (40b) values.

The particle per phase state count is, [43] (Maggiorie, 2000)

$$n_f \sim h_0^2 \Omega_{GW} \cdot \frac{10^{37}}{3.6} \cdot \left[ \frac{1000 \text{ Hz}}{f} \right]^4 \quad (44b)$$

Secondly detector strain for device physics is given by [43] (Maggiorie, 2000)

$$h_c \leq (2.82 \times 10^{-21}) \cdot \left( \frac{1 \text{ Hz}}{f} \right) \quad (44c)$$

These values of strain, the numerical count, and also of  $n_f$  give a bit count and entropy which will lead to limits as to how much information is transferred. Note after the start of inflation with at the beginning of relic inflation  $\lambda_{GW} \sim 10^{-1} \text{ meters} \Rightarrow n_f \propto 10^6 \text{ graviton/unit-phase-space}$  for  $f_{GW} \sim 10^9 \text{ Hertz}$  This is to have, say a starting point in pre inflationary physics of  $f_{GW} \sim 10^{22} \text{ Hertz}$  when  $\lambda_{GW} \sim 10^{-14} \text{ meters}$ , i.e. a change of  $\sim 10^{13}$  orders of magnitude in about  $10^{-25}$  seconds. **The challenge will be to** come up with an input model which will justify a new data model, [43] (Maggiorie, 2000)

## 11: Providing a curve for the fifth cosmology model, as a modification / extension of the Penrose model

One can look now at the following approximate model for the discontinuity put in, due to the heating up implied in Table 1. This is [33] (Beckwith, 2008)

$$\frac{\Lambda_{Max} V_4}{8 \cdot \pi \cdot G} \sim T^{00} V_4 \equiv \rho \cdot V_4 = E_{total} \quad (45)$$

The approximation in this treatment is that  $E_{total} \propto V(\phi)$  where we are looking at a potential energy term. [35] (Barvinsky, 2006). What we pay attention to, is an exponential potential [45] (Weinberg, 2008)

$$V(\phi) = g \cdot \phi^\alpha \quad (46)$$

What we come up with pre, and post Planckian space time regimes, when looking at consistency of the emergent structure is the following. Namely, [45] (Weinberg, 2008),

$$V(\phi) \propto \phi^{|\alpha|} \quad \text{For } t < t_{Planck} \quad (47a)$$

Also, we would have  $V(\phi) \propto 1/\phi^{|\alpha|}$  for  $t \gg t_{Planck}$  (47b)

The switch between Eq. (47a) and Eq. (47b) is not provable. And the author designates this as the boundary of a causal discontinuity. According to [45] (Weinberg, 2008), if  $\epsilon = \frac{\lambda^2}{16\pi G}$ ,  $H = 1/\epsilon t$  so that a scale factor behaves as

$$a(t) \propto t^{1/\epsilon} \quad (48)$$

Then, if (Weinberg, 2008) [46]

$$|V(\phi)| \ll (4\pi G)^{-2} \quad (49)$$

There are no quantum gravity effects. I.e., if one uses an exponential potential a scalar field could take the value of, when there is a drop from  $\phi_1$  to  $\phi_2$  for flat space geometry [45] (Weinberg, 2008)

$$\phi(t) = \frac{1}{\lambda} \ln \left[ \frac{8\pi G g \epsilon^2 t^2}{3} \right] \quad (50)$$

Then the scale factors, from [45] (Weinberg, 2008)

$$\frac{a(t_2)}{a(t_1)} = \left( \frac{t_2}{t_1} \right)^{1/\epsilon} = \exp \left[ \frac{(\phi_2 - \phi_1) \lambda}{2\epsilon} \right] \quad (51)$$

The more  $\frac{a(t_2)}{a(t_1)} \gg 1$ , then the less likely there is a tie in with quantum gravity. Note those that the way this potential is defined is for a flat, Robertson-Walker geometry, and that if  $t_1 < t_{Planck}$  then Eq. (51) no longer applies, and that one is not having connection with an Octonionic Gravity regime.

## 12. We are then going to get the following expression for the energy / frequency spread in the Penrose alternation of the big ‘crunch’ model

Start with working with the expression given by Eq. (15). This is for time  $\tilde{T} \sim 0^+$  to  $10^{-44}$  seconds,  $\Omega_{GW} \sim 10^6$ , and a frequency variance

$$\Omega_0 \varepsilon \left[ 1GHz, 10GHz \right] \quad (52)$$

This Eq. (52) (48) is due to  $T_{temperature} \sim 10^{32}$  Kelvin at the point of generation of the discontinuity leading to a discontinuity for a signal generation as given by  $\delta_0$  at  $\tilde{T} \sim 10^{-44}$  seconds. This process above. is for inputs into  $[\Omega_0 \tilde{T}] \sim \tilde{\beta}$  The assumption is that the discontinuity, as given by  $\delta_0$  getting to temperature  $T_{temperature} \sim 10^{32}$  Kelvin, for  $\Omega_{GW} \sim 10^6$ , meaning that the peak curve of frequency will be between 1 to 10 GHz for  $\Omega_{GW} \sim 10^6$ , with a falling value of  $\Omega_{GW}$  for frequencies  $< 1$  GHz

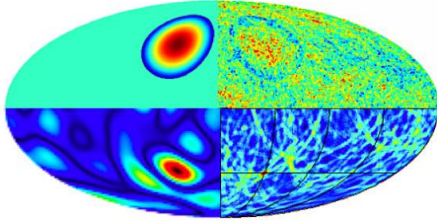
## 13: Can a researcher Find an appropriate $T^{(i)\mu\nu}$ if one has non zero graviton rest mass?

It depends upon understanding what is meant by emergent structure, as a way to generalize what is known in mathematics as the concept of “self-organized criticality. In 2001, [46] (Zimmermann and Voelcker, 2001) refer to an abstract mathematical self-organized criticality structure. We assert that the mathematical self-organized criticality structure is akin to a definition as to how Dp branes arise at the start of inflation. What is the emergent structure permitting  $\oint p_i dx_k = \hbar \delta_{i,k}$  to hold? What is the

self-organized criticality structure leading to forming an appropriate  $T^{(i)\mu\nu}$  if one has non zero graviton rest mass? Answering such questions will permit us to understand how to link  $T^{(i)\mu\nu}$  in a GW detector, to  $\tilde{\beta}$  in Eq. (8). The following construction is used to elucidate how an EM Gaussian beam

can be used to help in isolating  $T^{(i)\mu\nu}$  in a GW detector. One of the main things to consider is resolution of the following: [47] (Feeney, et.al. 2011) at University College London say they’ve found evidence of four collisions with other universes in the form of circular patterns in the cosmic microwave background. In their model, called “eternal inflation,” the universe is a bubble in a much larger cosmos. This cosmos is filled with other bubbles, all of which are other universes where the laws of physics may be different from ours. As seen in Figure 3. This also echoes [49] (Smolin, 1997).





**Fig 3, Based upon: First Observational Tests of Eternal Inflation [47]** (Feeney, et.al. 2011)

Chongqing university researchers are attempting to add more information than Fig (3) above, via suitable analysis of  $T^{(i)}$ , [48] (.Gurzadyan, Penrose, 2011)

#### **14. Conclusion: In terms of the Planckian evolution, as well as the contribution into it from different universes**

Analog, reality feed in from other universes may be the driving force behind the evolution of inflationary physics. We presume going to Octonionic gravity is then, quantum [50] (Beckwith,2011c).Pre Octonionic gravity physics (analog regime of reality) features a break down of the Octonionic gravity commutation relationships when one has curved space time. This corresponds, as brought up in the Jacobi iterated mapping for the evolution of degrees of freedom to a build up of temperature for an increase in degrees of freedom from 2 to over 100. Per unit volume of space time. The peak regime of where the degrees of freedom maximize is where the Octonionic regime holds. Analog physics, prior to the buildup of temperature can be represented by Eq. (1) and Eq. (3). The input into Eq. (1) and Eq. (3) is Eq. (24) which is an ergodic mapping, from many universes into our own present universe. This mapping requires a deterministic quantum limit as similar to what [51] (t'Hooft, 2006) .Theoretically, inputs into Eq. (1) and Eq. (3) await experimentally falsifiable experiments. If what the author suspects, i.e. ergodic characteristics may be leading to a feed into Eq. (1) and Eq. (3) due to Eq. (24). We want verification of Eq. (24).

Note that [24] has the following quote

Quote

*A modified form of the holographic bound that applies to a post-inflationary universe follows from the generalized second law. However, in a spatially closed universe, or inside a black hole event horizon, there is no simple relationship that connects the area of a region to the maximum entropy it can contain.*

The choice between these two reflects upon if there is a multiverse, or if there is, even more to the point if there is information transfer and mixing between components of universes which may hold if the following quasi ergodic process holds, according to [52].

We also have to be aware of the startling possibility raised in [53], namely that

Quote

*In theories in which the cosmological constant takes a variety of values in different "subuniverses," the probability distribution of its observed values is conditioned by the requirement that there be someone to measure it. This probability is proportional to the fraction of matter that is destined to condense out of the background into mass concentrations large enough to form observers. We calculate this "collapsed fraction" with a simple, pressure-free, spherically symmetric, nonlinear model for the growth of density fluctuations in a flat universe with arbitrary value of the cosmological constant, applied in a statistical way to the observed spectrum of density fluctuations at recombination.*

I.e. our model of the evolution of a cosmological constant, as given in the use of the Park model, as in [34] we are considering possible “subuniverse” contributions to the cosmological constant, as given by modeling the cosmological constant as conflated with Dark Energy. As given in [22].

However, there is another way to model a “cosmological constant” as given in [54], namely a model for the cosmological “constant” which is a consequence of the generalized HUP they derive. Their HUP though has none of the flourishes put in, as far as the work which has been alluded to for Pre Planckian to Planckian physics evolution as reported in [4, 5] and as in the beginning of our text.

I.e. a worthy project would be to differentiate between either choosing [53] or [54] and if a variant of [54] is chosen, to substitute the HUP as given by [54] by what has been derived and published in [4].

The details of such a choice would have profound implications as far as heavy gravity, as well as the current given in Eq. (43). In addition, the details of the Pre Planckian to Planckian Space-time could be investigated more thoroughly.

We argue that the details of the division algebras, and the links to Octonionic geometry as alluded to in the beginning of the text would be either falsified, by experimental measurements, or confirmed, which could lead to researchers adding more details as to [1], [2], and [3] as well as confirming the central importance of what Lisi attempted working with in [9]. It would be interesting and perhaps useful to compare this with the predictions given by Abbot [55]. As well as the issue brought up by [56]

## 15. Acknowledgements

This work is supported in part by National Nature Science Foundation of China grant No. 11375279

### Appendix A: Highlights of J.-W. Lee’s paper [19]

The following formulation is to highlight how entropy generation blends in with quantum mechanics, and how the breakdown of some of the assumptions used in Lee’s paper coincide with the growth of degrees of freedom. What is crucial to Lee’s formulation, is Rindler geometry, not the curved space formulation of initial universe conditions. First of all. [19] (Lee, 2010),

*“Considering all these recent developments, it is plausible that quantum mechanics and gravity has information as a common ingredient, and information is the key to explain the strange connection between two. If gravity and Newton mechanics can be derived by considering information at Rindler horizons, it is natural to think quantum mechanics might have a similar origin. In this paper, along this line, it is suggested that quantum field theory (QFT) and quantum mechanics can be obtained from information theory applied to causal (Rindler) horizons, and that quantum randomness arises from information blocking by the horizons*

To start this we look at the Rindler partition function, as by [19] (Lee, 2010)

$$Z_R = \sum_{i=1}^n \exp[-\beta H(x_i)] = \text{Trace} \cdot (\exp[-\beta H]) \quad (\text{A.1})$$

As stated by Lee [48] .we expect  $Z_R$  to be equal to the quantum mechanical partition function of a particle with mass  $m$  in Minkowski space time. Furthermore, there exists the datum that: Lee made an equivalence between Eq. (A1) and [19] (Lee, 2010)

$$Z_Q = N_1 \int \delta x \cdot \exp\left[\frac{-i}{\hbar} \cdot I(x_i)\right] \quad (\text{A2})$$

Where  $I(x_i)$  is the action ‘integral’ for each path  $x_i$ , leading to a wave function for each path?  $x_i$

$$\psi \sim \exp\left[\frac{-i}{\hbar} \cdot I(x_i)\right] \quad (\text{A3})$$

If we do a rescale  $\hbar = 1$ , then the above wave equation can lead to a Schrodinger equation,

**The example given by (Lee, 2010)** is that there is a Hamiltonian for which

$$H(\phi) = \int d^3x \cdot \left\{ \frac{1}{2} \cdot \left( \frac{\partial \phi}{\partial t} \right)^2 + \frac{1}{2} \cdot (\nabla \phi)^2 + V(\phi) \right\} \quad (A4)$$

Here,  $V$  is a potential, and  $\phi$  can have arbitrary values before measurement, and to a degree,  $Z$  represent uncertainty in measurement. In Rindler co-ordinates,  $H \rightarrow H_R$ , in co-ordinates  $(\eta, r, x_2, x_3)$  with proper time variance  $ard\eta$  then

$$H_R(\phi) = \int dr dx_{\perp} ar \cdot \left\{ \frac{1}{2} \cdot \left( \frac{\partial \phi}{\partial r} \right)^2 + \frac{1}{2} \cdot \left( \frac{\partial \phi}{ar \partial \eta} \right)^2 + \frac{1}{2} \cdot (\nabla_{\perp} \phi)^2 + V(\phi) \right\} \quad (A5)$$

Here, the  $\perp$  is a plane orthogonal to the  $(\eta, r)$  plane. If so then

$$Z = tr \exp[-\beta H] \mapsto Z_R = tr \exp[-\beta H_R] \quad (A6)$$

**Now, for the above situation, the following are equivalent**

1.  $Z_R$  Thermal partition function is from information loss about field beyond the Rindler Horizon
  2. QFT formation is equivalent to purely information based statistical treatment suggested in this paper
  3. QM emerges from information theory emerging from Rindler co-ordinate
- Lee also forms a Euclidian version for the following partition function, if  $I_E(x_i)$  is the Euclidian action for the scalar field in the initial frame. I.e.

$$Z_Q^E = N_1 \int \mathcal{D}x \cdot \exp \left[ \frac{-i}{\hbar} \cdot I_E(x_i) \right] \quad (A7)$$

There exist analytic continuation of  $\tilde{t} \mapsto it$  leading to  $Z_Q^E \mapsto Z_Q$  = Usual zero temperature QM partition function of  $Z_Q$  for  $\phi$  fields.

**Important Claim:** The following are equivalent

1.  $Z_R$  And  $Z_Q$  are obtained by analytic continuation from  $Z_Q^E$
2.  $Z_R$  And  $Z_Q$  are equivalent.

## Reference

- [1] R. Wilson, "Octonions", [http://www.maths.qmul.ac.uk/~raw/talks\\_files/octonions.pdf](http://www.maths.qmul.ac.uk/~raw/talks_files/octonions.pdf)
- [2] L. Crowell, *Quantum Fluctuations of Spacetime* World Press Scientific, in World Scientific Series in Contemporary Chemical Physics, Volume 25, Singapore, Republic of Singapore, 2005
- [3] G.M. Dixon, G.M., *Division Algebras: Octonions Quaternions Complex Numbers and the Algebraic Design of Physics*. From the series, "Mathematics and its Applications", 1994.; Kluwer Academic Publishers, London
- [4] Beckwith, A. (2016) Gedanken Experiment Examining How Kinetic Energy Would Dominate Potential Energy, in Pre-Planckian Space-Time Physics, and Allow Us to Avoid the BICEP 2 Mistake. *Journal of High Energy Physics, Gravitation and Cosmology*, **2**, 75-82. doi: [10.4236/jhepgc.2016.21008](https://doi.org/10.4236/jhepgc.2016.21008).
- [5] To be published approved text, by A.W. Beckwith, approved by JHEPGC, [https://www.researchgate.net/publication/296077757\\_Gedankenexperiment\\_for\\_initial\\_expansion\\_of\\_the\\_universe\\_and\\_effects\\_of\\_a\\_nearly\\_zero\\_inflaton\\_in\\_Pre\\_Planckian\\_physics\\_space-time\\_satisfying\\_traditional\\_Slow\\_Roll\\_formulas\\_which\\_happens\\_in\\_Pre\\_Planck](https://www.researchgate.net/publication/296077757_Gedankenexperiment_for_initial_expansion_of_the_universe_and_effects_of_a_nearly_zero_inflaton_in_Pre_Planckian_physics_space-time_satisfying_traditional_Slow_Roll_formulas_which_happens_in_Pre_Planck)

- [6] A. Beckwith, "Could a Causal Discontinuity Explain Fluctuations in the CMBR Radiation Spectrum?", to be published in JHEPGC, April 2016; <http://vixra.org/abs/1602.0035>
- [7] T. Padmanabhan, "understanding our universe, current status and open issues", pp 175-204, of 100 Years of Relativity, Space-Time Structure: Einstein and Beyond, Editor, A. Ashatekar, World Scientific Publishing Co. Pte.Ltd, Singapore, Republic of Singapore, 2005; <http://arxiv.org/abs/gr-qc/0503107>
- [8] Lee Smolin (2007). "The Plebanski action extended to a unification of gravity and Yang-Mills theory". [arXiv:0712.0977](https://arxiv.org/abs/0712.0977) [[hep-th](https://arxiv.org/abs/0712.0977)].
- [9] A G Lisi (2011-05-11). "[Garrett Lisi Responds to Criticism of his Proposed Unified Theory of Physics](#)". *Scientific American*. [Archived](#) from the original on 2011-07-02. Retrieved 2011-07-30.
- [10] John. Baez, "The Octonians", Bull.Am.Math.Soc.39:145-205,2002, <http://arxiv.org/abs/math/0105155v4>
- [11] E. Kolb, S. Pi, S. Raby, "Phase Transitions in Super symmetric Grand Unified Models", pp 45-70, of *Cosmology in the Early Universe*, edited by L. Fang and R. Ruffini, in World Press Scientific, Pte. Ltd. Co, Singapore, Republic of Singapore, 1984
- [12] Beckwith, A. (2016) Gedanken Experiment for Refining the Unruh Metric Tensor Uncertainty Principle via Schwartz Shield Geometry and Planckian Space-Time with Initial Nonzero Entropy and Applying the Riemannian-Penrose Inequality and Initial Kinetic Energy for a Lower Bound to Graviton Mass (Massive Gravity). *Journal of High Energy Physics, Gravitation and Cosmology*, **2**, 106-124. doi: [10.4236/jhepgc.2016.21012](https://doi.org/10.4236/jhepgc.2016.21012)
- [13] D. Gorbunov, V. Rubakov, **Introduction to the Theory of the Early Universe, Cosmological Perturbations and Inflationary Theory**, World Scientific Publishing Pte. Ltd, Singapore, Republic of Singapore, 2011
- [14] W. G. Unruh; "Why study quantum theory?", **Canadian Journal of Physics**, 1986, Vol. 64, No. 2 : pp. 128-130; (doi: 10.1139/p86-019)
- [15] W. G. Unruh; "Erratum: Why study quantum gravity?", *Can. J. Phys.* 64, 128 (1986)
- [16] M. Giovannini, **A Primer on the Physics of the Cosmic Microwave Background** World Press Scientific, Hackensack, New Jersey, USA, 2008
- [17] C. Rovelli, *Phys. Rev. D* 77 044024, (2008)
- [18] Beckwith, A. (2016) Gedanken Experiment for Degree of Flatness, or Lack of, in Early Universe Conditions. *Journal of High Energy Physics, Gravitation and Cosmology*, **2**, 57-65. doi: [10.4236/jhepgc.2016.21006](https://doi.org/10.4236/jhepgc.2016.21006).
- [19] Lee, J.W. "Quantum Mechanics Emerges from Information Theory Applied to Causal Horizons", *Found Phys*, DOI: 10.1007/s10701-010-9514-3, pp 1-10 ( on line November 3, 2010)
- [20] Andrew Beckwith, Dice 2010, <http://iopscience.iop.org/article/10.1088/1742-6596/306/1/012064>
- [21] Kolb, E., and Turner, S. *The Early Universe*, Westview Press, Chicago, USA
- [22] Andrew Beckwith, <http://www.hindawi.com/journals/ahep/2014/230713/>
- [23] **Penrose, R.** "Before the Big Bang. An Outrageous New Perspective and Its Implications for Particle Physics", *Proceedings of EPAC* , 2006, pp 2759-2763

- [24] Richard Easther and David A. Lowe, “Holography, Cosmology and the second law of thermodynamics”,  
<http://arxiv.org/abs/hep-th/9902088> ; Phys.Rev.Lett. 82 (1999) 4967-4970
- [25] Chaturvedi, S., “Mutually Unbiased Bases”, Pramana Journal of Physics, Vol. 52, No. 2, pp 345-350, 2007
- [26] Salvail, L. , “Quantum Encryption of Classical Messages Using Mutually Unbiased Bases”,  
[http://www.cpi.caltech.edu/quantum-security/slides/salvail\\_2.pdf](http://www.cpi.caltech.edu/quantum-security/slides/salvail_2.pdf)
- [27] Ng, Y. J. Entropy **10**(4), pp. 441-461 (2008);
- [28] Beckwith, A.W. and Glinka, L. “The Arrow of Time Problem: Answering if Time Flow Initially Favouritizes One Direction Blatantly”, Prespacetime Journal | November 2010 | Vol. 1 | Issue 9 | pp. 1358-1375, <http://vixra.org/abs/1010.0015>
- [29] Crowell, L. in private communication to A.W. Beckwith, October 24, 2010
- [30] Crowell, L., in private communication with Author , March 1st , 2011
- [31] Poplawski , N., “Cosmological constant from QCD vacuum and torsion”, Ann. Phys. (Berlin) 523, 291 (2011)<http://arxiv.org/abs/1005.0893v1>
- [32] Kuchiev, M. Yu, “Can gravity appear due to polarization of instantons in SO(4)gauge theory?”, *Class. Quantum Grav.* 15 1895-1913 doi: 10.1088/0264-9381/15/7/2008
- [33] A.W. Beckwith , arXiv:0804.0196 [physics.gen-ph], AIP Conf.Proc.969:1018-1026,2008
- [34] Park, D.K., Kim, H., and Tamarayan, S., “Nonvanishing Cosmological Constant of Flat Universe in Brane world Scenarios,” *Phys. Lett. B* **535**, 5-10 (2002).
- [35] Barvinsky, A. Kamenshchik, A. , and Yu, A., “Thermodynamics from Nothing: Limiting the Cosmological Constant Landscape,” *Phy Rev D* **74** 121502, Rapid communications (19 December 2006)
- [36] Beckwith, A. W. “Applications of Euclidian Snyder Geometry to the Foundations of Space-Time Physics”,  
*EJTP* **7**, No. **24** (2010) 241–266
- [37] Ecker, G. “Effective Field Theories”, pp 77-85, ' Encyclopedia of Mathematical Physics, Volume 4, *Gauge Theory; Quantum Field theory* , Editors Jean – Pierre, Francoise, G. L. Naber, T.S. Sheung Tsun
- [38] Li F., and Yang, N. “ Phase and Polarization State of High Frequency Gravitational waves”, *Chin Phys. Lett.* Vol 236, No 5(2009), 050402, pp 1-4
- [39] A.W. Beckwith, Presentation in Chongqing University, November 2010, based in part on [38]
- [40] Li, F., Tang, M., Shi, D. “ Electromagnetic response of a Gaussian beam to high frequency relic gravitational waves in quintessential inflationary models”, PRD **67**,104008 (2003), pp1-17
- [41] A. Goldhaber, M. Nieto, “Photon and Graviton Mass Limits”,  
 Rev.Mod.Phys. **82**:939-979,2010, <http://arxiv.org/abs/0809.1003>
- [42] Giovannini, M., “Production and detection of relic gravitons in quintessential inflationary models”  
 Phys. Rev. D **60**, 123511 (1999).; <http://arxiv.org/abs/astro-ph/9903004>

- [43] Maggiore, M., “Gravitational Wave Experiments and Early Universe Cosmology”, *Physics Reports* 331 (2000) pp. 283-367
- [44] Beckwith, A.W., “Detailing Minimum parameters as far as red shift, frequency, strain, and wavelength of Gravity Waves / gravitons, and possible impact upon GW astronomy”,  
<http://vixra.org/pdf/1103.0020v1.pdf>
- [45] Weinberg, S. *Cosmology*, Oxford University Press, 2008
- [46] Zimmermann, R., Voelcker: “Topoi of Emergence Foundations & Applications”,  
<http://arxiv.org/pdf/nlin/0105064> v1
- [47] S. M. Feeney S.M., (UCL), et.al. “First Observational Tests of Eternal Inflation” ;  
<http://arxiv.org/abs/1012.1995>, in 2011
- [48] Gurzadyan, V.G, and Penrose, R., ” Concentric circles in WMAP data may provide evidence of violent pre-Big-Bang activity’,<http://arxiv.org/abs/1011.3706>
- [49] Smolin, L., *The Life of the Cosmos* (Oxford University Press, Oxford, UK.1997).
- [50] Beckwith, A.W., “ Identifying a Kaluza- Klein treatment of a Graviton permitting a de-celeration parameter  $Q(Z)$  as an alternative to standard DE “, *Journal of Cosmology*, Volume 13, 2011,  
<http://journalofcosmology/BeckwithGraviton.pdf>
- [51] t’ Hooft G, *Beyond the Quantum*, edited by Th. M. Nieuwenhuizen et al. Singapore, World Press Scientific, 2006; [http://arxiv.org/PS\\_cache/quant-ph/pdf/0604/0604008v2.pdf](http://arxiv.org/PS_cache/quant-ph/pdf/0604/0604008v2.pdf)
- [52] H. A. Dye, “On the ergodic mixing theorem,” *Transactions of the American Mathematical Society*, vol. 118, pp. 123–130, 1965. View at Publisher · View at Google Scholar · View at Zentralblatt MATH · View at MathSciNet
- [53] H. Martel, P. Shapiro, and S. Weinberg, ‘ Likely values of the cosmological constant”  
<http://iopscience.iop.org/article/10.1086/305016/fulltext/35789.text.html>
- [54] Yan – Gang Miao, Ying- Jie Zhao, “**Interpretation of the Cosmological Constant Problem within the Framework of Generalized Uncertainty Principle**”, <http://arxiv.org/abs/1312.4118>
- Int. J. Mod. Phys. D 23 (2014) 1450062
- [55] Abbott, B.P., et al., “[An upper limit on the stochastic gravitational-wave background of cosmological origin, data](http://www.phys.ufl.edu/~tanner/PDFS/Abbott09Nature-Stochastic.pdf)” *Nature* 460, 990 (2009); <http://www.phys.ufl.edu/~tanner/PDFS/Abbott09Nature-Stochastic.pdf>
- [56] Clarkson, C. and Seahra, S. ” A gravitational wave window on extra dimensions” *Class. Quant. Grav.* 24, F33 (2007)