

The Momentum Engine

GuagSan Yu

(Harbin · Macro · Dynamics Institute. 150066, P. R. China)

E-mail : sxzyu35@hotmail.com

(2014.3.10)

Abstract : The Newton third law is wrong! Moreover the momentum also is not conservation, So a kind of new space propeller nope don't may, That is the momentum engine.

Key Words: momentum; engine; propeller

The momentum engine drives be with the inertial centrifugal force, Figure 1 namely is a momentum engine.

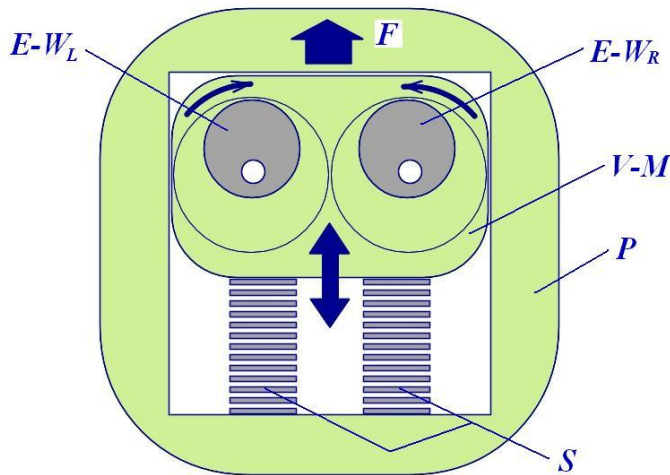


Figure 1
The momentum engine

In figure 1, the pedestal of engine is P , in the inside, the vibration machine that namely $V-M$. On $V-M$ have two eccentricity wheel that $E-M_L$ and $E-M_R$. In P that $V-M$ slippages to go up and adown. The two spring S impel $V-M$ to go up prop up that P the wall. That two eccentricity wheel that $E-M_L$ and $E-M_R$, Each to direction reverse rotation. The resultant force of the centrifugal force that it engender, be up and adown cycle changes.

In $V-M$ The resultant force of the centrifugal force up, its very big centrifugal force be to go wall of P of direct action, namely that F of the propulsion of the momentum engine. In that $V-M$, the resultant force of the centrifugal force while adown, because the spring S the elasticity, so that on P the action very small.

Therefore the momentum engine that propulsive force F

$$F = \left(\int_0^{\pi} m \cdot r \cdot \omega^2 \cdot \sin \alpha d\alpha \right) - \left(\frac{m_{V-M}}{m_{all}} \int_{\pi}^{2\pi} m \cdot r \cdot \omega^2 \cdot \sin \beta d\beta \right) \quad (01)$$

Here m_{V-M} is the vibration machine $V-M$ the mass, m_{all} is the momentum engine and aircraft all the mass.

otherwise by (01)
$$F_{up} = \int_0^{\pi} m \cdot r \cdot \omega^2 \cdot \sin \alpha d\alpha \quad (02)$$

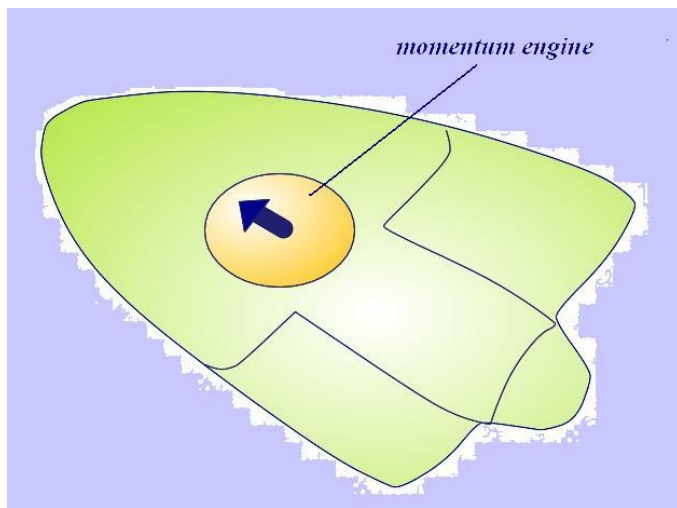
and
$$F_{down} = \frac{m_{V-M}}{m_{all}} \int_{\pi}^{2\pi} m \cdot r \cdot \omega^2 \cdot \sin \beta d\beta \quad (03)$$

In (03) that F_{down} ought is the minus, so (01) also be $F = F_{up} - F_{down} \quad (04)$

In (01) that $\frac{m_{V-M}}{m_{all}}$ commonly very small the value, so propulsive force F shall very big.

In (01), (04) that F_{up} and F_{down} the value is differ, that is because the Newton third law is wrong, here to the pedestal P action is differ, in both sides of the vibration machine $V-M$.

The momentum engine can equip the interior in aircraft, It of the propulsive force is an



inertial force, so the do not with the exterior action. It is very supernatural, because of inertial force and gravitation equivalent, so look from it the exterior, it like has no engine, but it can move. It is hitherto have never had that a thruster.

Figure 2
The aircraft of momentum engine

The momentum engine can use in any transportation machinery,

whether it is in sky, land or sea; either in surface or underwater; whether in the Earth's atmosphere or outer space, all can use.

Figure 2 is a space shuttle to equip the momentum engine.

Because **The Momentum Engine** the thrust of the creation is an inertial force, so also be entitle **Inertial Force Propeller**. It will be a kind of propulsion engine that mankind will soon the most extensive usage.

A great ship asks deep water. Tripod cat non-bureau chief !

References

- [1] The Newton third law is wrong!, GuagSan Yu, <http://blog.sina.com.cn/u/2100834921> [2014-02-27 19:19]
- [2] Momentum is not Conservation Principle, GuagSan Yu, <http://blog.sina.com.cn/u/2100834921> [2012-10-29]
- [3] Transcend the Conservation law, GuagSan Yu, <http://blog.sina.com.cn/u/2100834921> [2013-10-28 12:09]
- [4] Cheng Souzu, Jiang Ziyong.1961.8 Common physics. Beijing: People's education publishing organization (in Chinese)[程守洙, 江之永. 1961. 8 普通物理学(第一册). 北京: 人民教育出版社]
- [6] D.Halliday, R.Resnick. 1979.5 Physics foundation. Zeng Yongling. Beijing: Higher education publishing organization (in Chinese)[D. 哈里德, R. 瑞斯尼克. 1979. 5 物理学基础(上册). 郑永令译. 北京: 高等教育出版社]