

# Time Contraction: The Possibility of Faster Than Light without Violation of Lorentz Transformation or Causality and the Vacuum Energy Dependent

Azzam AlMosallami

**Abstract**— Faster than light is impossible according to the special relativity theory of Einstein SRT. In this paper I'll propose a new concept in physics called "time contraction". This concept will solve many problems in physics related to faster than light without violation Lorentz transformation or causality. According to this concept, it is possible measuring the speed of an electromagnetic wave or a particle which owns rest mass greater than zero to be faster than the speed of light in vacuum without violation of Lorentz transformation or causality. Time contraction is proposed by a new understanding to the Lorentz transformation equations depending on the concepts of quantum theory (Copenhagen School). It is a new formulation to the time dilation and the length contraction and the speed of light which are vacuum energy dependent. By this new formulation, I could rescue the special relativity from the Twin paradox, Ehrenfest paradox, Ladder paradox and Bell's spaceship paradox. Furthermore, I could reconcile and interpret the experimental results of quantum tunneling and entanglement (spooky action), —Casimir effect, Hartman effect— with the SRT in this paper.

**Index Terms**— Special relativity, Lorentz transformation equations, faster than light, wormholes. Pioneer anomaly.



## 1 INTRODUCTION

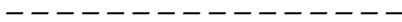
MY paper (The modified special relativity theory MSRT)<sup>[23]</sup> is considered as a new understanding to Lorentz transformation equations depending on the concepts of quantum theory (Copenhagen School). It is a new formulation to the time dilation, length contraction and the speed of light which are vacuum energy dependent. What I proposed in my paper is agreed and interpreting the experimental results of quantum tunneling (Gunter Nimtz experiments) and quantum entanglement. Recently, there are some voices in physics asking for the variability of the speed of light, one of them the Portuguese cosmologist and professor in Theoretical Physics at Imperial College London João Magueijo. In 1998, Magueijo teamed with Andreas Albrecht to work on the varying speed of light (VSL) theory of cosmology, which proposes that the speed of light was much higher in the early universe, of 60 orders of magnitude faster than its present value. This would explain the horizon problem (since distant regions of the expanding universe would have had time to interact and homogenize their properties), and is presented as an alternative to the more mainstream theory of cosmic inflation [37]. My paper reconciles and interprets the variability of the speed of light in SRT which is vacuum energy dependent. Also recently, two published papers in European Physical Journal D challenge established wisdom about the nature of vacuum. In one paper, Marcel Urban from the University of Paris-Sud, located in Orsay, France and his colleagues identified a quantum level mechanism for interpreting vacuum as being filled with pairs of virtual particles with fluctuating energy values. As a result, the inherent characteristics of vacuum, like the speed of light, may not be a

constant after all, but fluctuate [38]. Meanwhile, in another study, Gerd Leuchs and Luis L. Sánchez-Soto, from the Max Planck Institute for the Physics of Light in Erlangen, Germany, suggest that physical constants, such as the speed of light and the so-called impedance of free space, are indications of the total number of elementary particles in nature [39]. Also, two separate research groups, one of which is from MIT, have presented evidence that wormholes – tunnels that may allow us to travel through time and space – are “powered” by quantum entanglement. Furthermore, one of the research groups also postulates the reverse – that quantum entangled particles are connected by miniature wormholes. These ideas are agreed and predicted in my paper [40,41].

The dependency of the speed of light on the vacuum energy is adopted in my paper, which is the lost key of unifying between quantum theory and relativity (special and general).

## 2 The Theory

In my Modified Special relativity (MSRT)<sup>[23]</sup>, and my new interpretation to the Lorentz transformation equations, I found, when the train is moving with constant speed  $v$ , its vacuum energy is increased compared to the vacuum energy of the earth surface. And when the light beam is passing through the vacuum of the moving train, it is equivalent to passing through a medium of refractive index greater than 1. In this case, I found in my MSRT, the time required for the light beam to pass the length of the moving train for the earth observer is independent of the direction of the velocity of the train compared to the direction of transmitting the light beam [33]. Thus, if the light beam is sent inside the moving train from the back to the front –at the direction of the velocity- in



• Azzam AlMosallami is currently The Director of the Science Center for Studies and Research, Switzerland, PH-+41791206234 Email: a.almosallami71@gmail.com

this case for the earth observer according to his clock the required time separation for the light beam to pass the length of the moving train is  $\Delta t$  where

$$\Delta t = \frac{L}{\sqrt{c^2 - v^2}} \quad (1)$$

Also if the light beam is sent from the front of the moving train to the back at the opposite direction of the direction of the velocity of the train, then the measured time separation for the light beam to pass the length of the moving train for the earth observer according to his earth clock is also given according to eq. (1). From eq. (1), the measured speed of light inside the moving train for the stationary earth observer according to his earth clock is  $c'$  where

$$c' = \sqrt{c^2 - v^2} \quad (2)$$

Where  $c'$  does not depend on the direction of transmitting the light beam compared to the direction of the velocity of the train. It depends only on the absolute value of the velocity of the train. This proposed solution - the independency of the measured speed of light inside the moving frame with the direction of the velocity of the moving frame - explains the negative result of the Michelson-Morley experiment [34] as we shall see later in my new interpretation of the Lorentz transformation equations.

In my MSRT I proposed also, the length of the moving train  $L$  is the same if the train was stationary for the stationary earth observer, where I refute the length contraction in the special relativity of Einstein that the length of the moving frame will be contracted in the direction of the velocity for the earth observer. From that we get, when the train is stationary, and a light beam is sent along its length, we get

$$L = c\Delta t_0 \quad (3)$$

Where  $c$  is the light speed in vacuum, and  $\Delta t_0$  is the time required for the light beam to pass the length of the stationary train for the stationary earth observer according to his clock. Now, if we substitute the value of  $L$  in (3) to (1), we get

$$\Delta t = \frac{c\Delta t_0}{\sqrt{c^2 - v^2}} = \frac{\Delta t_0}{\sqrt{1 - \frac{v^2}{c^2}}} \quad (4)$$

Equation (4) indicates us that, for the stationary earth observer according to his earth clock, the time separation required for the light beam to pass the length of the moving train is greater than if the train is stationary by the factor

of  $\frac{1}{\sqrt{1 - \frac{v^2}{c^2}}}$ . Thus, (4) indicates us also if the stationary earth observer registered by his clock a time separation for an event occurred inside the stationary train to be  $\Delta t = \Delta t_0$ , then if

this train moves with constant speed  $v$ , then the earth observer will register by his clock a time separation  $\Delta t$  for the same event to be occurred inside the moving train, where

$$\Delta t = \frac{\Delta t_0}{\sqrt{1 - \frac{v^2}{c^2}}}. \text{ Thus events are occurring inside the moving}$$

train in a slower rate than if the train was stationary for the stationary earth observer according to his earth clock according to (4).

Now suppose both the earth observer and the observer on the moving train are agreed to perform this thought experiment. The observer on the moving train sent a ray of light along his moving train length, and both the earth observer and the observer on the moving train will measure the time required for the light beam to pass the length of the moving train, each one uses his clock. According to the MSRT [23], both the earth observer and the observer on the moving train will be agreed at the moment of transmitting the ray of light from the back of the moving train and then they will be agreed at the moment of reaching the ray of light at the front of the moving train. We have seen previously, relative to the earth observer the direction of transmitting the light beam is independent on the direction of the velocity of the moving train. Also, both of them will be agreed at the measured length of the moving train to be  $L$ . Thus for the earth observer the time separation of this event according to his clock is given according to (4). Where, the earth observer will measure a time separation for the light beam to pass the length of the moving train to be greater than if the train is stationary. Now for the observer on the moving train, since the motion of his clock inside the moving train is considered as events occurring inside the train, thus its motion will be slower when the train is moving than when it is at rest. And, since both the observer on the moving train and the stationary earth observer are agreed at the measured length of the moving train to be  $L$ , and also they are agreed at starting of transmitting the light beam from the back of the train and then agreed at the moment of reaching the light beam to the front of the moving train. Thus, by these conditions, when the stationary earth observer computed the time  $\Delta t$  for the light beam to pass the length of the moving train  $L$ , at this moment the observer on the moving train will measure the time separation  $\Delta t'$  according to his clock, where

$$\Delta t' = \sqrt{1 - \frac{v^2}{c^2}} \Delta t$$

And from eq. (4) we get

$$\Delta t' = \Delta t_0 \quad (5)$$

Thus, eq. (5) indicates us, the observer on the moving train will measure a time separation for the light beam to pass his moving train length to be the same time separation if the train at rest. From that the measured speed of light inside the

moving train for the observer on the train according to his clock locally is equal to the speed of light in vacuum, same as the stationary earth observer when he measures the speed of light on the earth surface; he will get it equals to the speed of light in vacuum. From that we get the main principle of the modified special relativity which illustrates the consistency of the speed of light locally.

\* The speed of light is locally constant and equals to the speed of light in vacuum  $c$  for any inertial frame of reference.

From eq. (5), we can write eq. (4) as

$$\Delta t = \frac{\Delta t'}{\sqrt{1 - \frac{v^2}{c^2}}} \quad (6)$$

Equation (6) represents the equation of time dilation in Einstein's SRT.

### 3 THE LORENTZ TRANSFORMATION EQUATIONS AND THE MSRT

How can we understand the Lorentz transformation equations according to the MSRT in order to keep the laws of physics are the same for all inertial frames of reference?

We have seen in the previous section, when the light beam is passing through the moving train, then the time separation for passing the light beam the length of the moving train is independent on the direction of transmitting the light beam compared to the direction of the velocity of the moving train [33].

Both the stationary earth observer and the observer on the moving train are agreed at the length of the moving train to be  $L$ , same as if the train is stationary. Also, both the stationary earth observer and the observer on the moving train are agreed at the moment of transmitting the light beam from the back of the moving train and also they will be agreed at reaching the light beam at the front of the train, and vice versa if the light beam was sent from the front to the end of the moving train.

From these postulates we derived eq. (6) which represents the equation of Einstein of the time dilation in the SRT.

Now suppose we have a tube full of water of length  $L$ . We have seen in optics, when a light beam is incident inside this tube, then the time separation for the light beam to pass the length of the tube is greater than if the tube is empty according to our lab clock. If the tube is empty and we measured the time separation  $\Delta t_0$  by our clock for the light beam to pass the length of the tube, then when the tube is full of water, we shall measure the time separation  $\Delta t$  where

$$\Delta t = n\Delta t_0 \quad (7)$$

Where  $n$  is the refractive index of water. According to postulate (\*) and eq. (4), we get an equivalence when the light

beam is passing through the moving train or passing through a medium of refractive index  $n$ . Suppose we have a meter stick of length  $\Delta x_0$  in free space. If we put this meter stick inside the tube of water, we shall see the length of this meter stick is longer than in the free space, by the factor of  $n$ , the refractive index of water, where

$$\Delta x = n\Delta x_0 \quad (8)$$

Where  $\Delta x$  is the length of the meter stick inside the water for an observer in free space.

Thus from our equivalence principle, and from eq. (8), if we determined two points of length separation  $\Delta x_0$  of light path inside the train when it is stationary, then, when the train is moving with constant velocity  $v$ , then, the measured length of the light path inside the moving train compared to the light path  $\Delta x_0$  when the train is stationary for the stationary earth observer will be  $\Delta x$  given according to eq. (8) as

$$\Delta x = \frac{\Delta x_0}{\sqrt{1 - \frac{v^2}{c^2}}} \quad (9)$$

For the rider of the moving train the measured space and time separation inside his moving train for the light bath will be equal as it is stationary, where from eq. (5) we have  $\Delta t' = \Delta t_0$ , and thus we get also

$$\Delta x' = \Delta x_0 \quad (10)$$

Thus from eq. (10), we can write eq. (9) as

$$\Delta x = \frac{\Delta x'}{\sqrt{1 - \frac{v^2}{c^2}}} \quad (11)$$

Equations (6) and (11) represent the measured space-time separation of the light bath inside the moving train comparing to the measured space-time of the light bath locally on the earth surface for the earth observer. For a free particle moving on the earth surface, the particle is defined by the space-time of  $\Delta x$  and  $\Delta t$  for the earth observer. But when this particle is incident inside the moving train, it will be defined locally by the space-time of  $\Delta x'$  and  $\Delta t'$  of the stationary observer on the moving train locally. In this case  $\Delta x$  is related to  $\Delta x'$  by (11), and  $\Delta t$  is related to  $\Delta t'$  by (6). Now suppose a light beam is incident inside the moving train. According to the two points separated by a distance  $\Delta x'$  inside the moving train, for the rider of the moving train, the measured speed of light will be given as

$$c' = \frac{\Delta x'}{\Delta t'} = \frac{\Delta x_0}{\Delta t_0} = c \quad (12)$$

$\Delta t'$  is the time separation of the event for the rider according to his clock. Thus the rider will measure the light speed inside his moving train to be the light speed in vacuum.

For the stationary earth observer, within the same two points inside the moving train separated by a distance  $\Delta x'$  for the rider of the moving train, the measured speed of light will be given as

$$c'' = \frac{\Delta x}{\Delta t} = \frac{\sqrt{1 - \frac{v^2}{c^2}} \Delta x'}{\sqrt{1 - \frac{v^2}{c^2}} \Delta t'} = \frac{\Delta x_0}{\Delta t_0} = c \quad (13)$$

Equation (13) indicates us; the measured speed of light inside the moving train for the earth observer will be equal to the speed of light in vacuum also! At the first time the reader will think eq. (13) is contradicted with eq. (2), but there is no contradiction. Since eq. (2) is predicting the light speed by measuring the time separation for the light beam to pass the length of the moving train according to the clock of the stationary earth observer. And since the length of the train is determined locally by the space on the earth surface and this length of the train is not changed if the train is moving or stationary. This is equivalent to the tube of length L full of water. Suppose the length of the tube is 1 meter. Now if we have two meter sticks of length 1 meter. Now if we put one meter stick inside, along the water tube length and we put the other outside along the length of the tube. What shall we observe? We shall observe the meter stick inside the water will be appeared to be longer than the meter stick outside. And since the meter stick outside will give us the length of the tube locally. The meter stick inside will give us the length of the tube according to the space inside the tube. Thus, by using eqs. (7)&(8) to determine the speed of light according to the space-time inside the water tube, we get

$$c'' = \frac{\Delta x}{\Delta t} = \frac{n \Delta x_0}{n \Delta t_0} = c \quad (14)$$

Equation (14) represents the measured speed of light inside the water tube according to the space-time coordinates inside the tube which is related to our coordinates according to eqs. (7)&(8). Where, according to eq. (14), the measured speed of light is equal to the speed of light in vacuum. Equation (14) represents another interpretation why the light beam is taking longer time separation when it is passing through a medium of refractive index greater than 1. According to the meter stick located outside along the length of the tube, the light speed will be decreased, and because of that it takes longer time separation according to our clocks. But according to the meter stick inside the medium, the light speed is the same light speed in vacuum, because the distance is longer inside the medium of refractive

index greater than 1 according to eq. (8), so it takes longer time separation according to our clocks. Einstein in his special relativity adopted the second interpretation, the consistency of the speed of light and then the difference of measuring the time and space by the two observers who are moving in a relative velocity. But, what we have discovered in our MSRT that the two interpretations are equivalent to each others as we shall see in the following.

In order to understand how my theory works, let's start studying the thought experiment which was adopted by Einstein's SRT which illustrating his interpretation of the Lorentz transformation equations and the relative simultaneity. Suppose both the earth observer and the observer of the moving train will perform this thought experiment. As in fig. (1), at pylon A the train started to move with constant speed  $v$ , and at this moment the observer stationary on the moving train sent a ray of light from back to front the train, and also at this time the observer on the ground sent a ray of light from pylon A to pylon B. The two rays of light are sent along the direction of the velocity of the train.

Relative to the observer stationary on the moving train, the distance between the back and the front is fixed, where the length of his moving train is the same length as if the train is stationary. For the observer on the ground, while he sees the ray of light moves toward the front of the moving train, he will see also at the same time the front of the moving train is going far from the light beam, that is because the train moves with constant speed  $v$  at the same direction of the light beam. In this case and according to the concept of the classical relativity, the observer stationary on the train will see the light beam arrives the front of his moving train before the observer stationary on the ground. Let's propose this condition- according to the classical relativity- if at the moment that the observer stationary on the moving train sees the light beam reaches to the front of the train, at this moment the train arrives to the second pylon B on the ground. According to the concept of the objective existence of the phenomenon in the classical physics, both the observer on the ground and the observer stationary on the moving train will see the train arrives pylon B, but according to the classical relativity, the observer stationary on the moving train will see the light beam arrives to the front of his train and also at this time the front of his train arrives to pylon B. But at this moment for the observer stationary on the ground, he sees the train arrives to pylon B, but the light beam is still approaching to pylon B.

The negative result of the Michelson-Morely experiment [43] illustrated the speed of the light beam will not be affected by the relative velocity and thus both the observer stationary on the ground and the observer stationary on the moving train must see the light beam arrives the front of the moving train and the front must arrive to pylon B at the same moment according to the concepts of the classical physics at that time.

And thus in order to solve the negative result of the Michelson-Morely experiment FitzGerald [43-45] Proposed the concept of the length contraction in the direction of the velocity, where according to this concept the length of the moving train must be contracted along the direction of the

moving train relative to the observer on the ground, and thus according to this concept both the observer on the ground and the observer on the moving train will see the light beam arrives the front of the train, and also the front of the moving train arrives pylon B. After that, Lorentz [46-48] proposed his transformation in order to keep on the constancy of the speed of light and then the invariance of Maxwell's equations and the laws of physics. Einstein interpreted the Lorentz transformation equations according to the concept of the relative velocity and the simultaneity by his special relativity SRT. According to the SRT of Einstein, both the observer on ground and the observer on the moving train see the light beam arrives to the front of the moving train and the front of the train arrives to pylon (B) as well, but in a different time separation and space separation. Where according to the reciprocity principle of the SRT of Einstein and under the postulate of the constancy of the speed of light, he defined the Lorentz contraction in the direction of the velocity, where the measured length of the moving train for the observer on the ground is  $L'$  where

$$L' = \sqrt{1 - \frac{v^2}{c^2}} L, \text{ where } L \text{ is the proper length of the moving}$$

train for the observer stationary on the moving train, where  $L$  is equal to the length of the train if it was stationary. Thus from that and according to the SRT of Einstein's interpretation of the Lorentz contraction, both the observer on the ground and the observer on the moving train will agree that the light beam arrives to the front of the train and also the front of the train arrives to pylon B. Now, relative to the light beam that was sent from pylon A, according to the classical relativity, for the observer stationary on the moving train, pylon A is moving with velocity  $-v$  relative to him, and thus the light beam is going far from the front of his train. Thus, at the moment that the stationary observer on the train sees the front of his train arrives at pylon B, he will see the light beam that was sent from pylon A is not arrived to pylon B according to classical relativity. According to classical relativity the observer stationary on the moving train will see the light beam is still approaching to pylon B, while at this moment, the observer on the ground sees the light beam which was sent from pylon A is arrived to pylon B, and he agrees also with the observer stationary on the moving train that the front of the train arrives to pylon B. According to Einstein's SRT interpretation of the Lorentz contraction, both the observer on the ground and the observer stationary on the moving train will agree that the light beam which was sent from A reaches to pylon B but they will be different in the time separation of the event and the space separation between the two pylons, where the observer stationary on the moving train will measure the distance between the two pylons to be contracted.

According to Einstein's interpretation to the Lorentz transformation in his SRT, it is impossible measuring a particle or electromagnetic waves to move faster than light. Where, that leads to violation the Lorentz invariance and causality. In this paper I'll introduce a new interpretation to the Lorentz transformation depending on a new understanding to the Lorentz transformation equations. And this interpretation is leading to the possibility of measuring faster than light

without violation of the Lorentz invariant or causality and at the same time keeping on the constancy of the speed of light to be  $c$  the speed of light in vacuum locally.

In order to understand my new interpretation to the Lorentz transformation in my MSRT, let's study the previous thought experiment of Einstein which illustrated a light-like interval. Suppose again both the earth observer and the observer of the moving train will perform this thought experiment. As in fig. (1), at pylon A the train started at rest to move with constant speed  $v$ , and at this moment the observer stationary on the moving train sent a ray of light from back to front of the train, and also at this time the observer on the ground sent a ray of light from pylon A to pylon B. The two rays of light are sent along the direction of the velocity of the moving train.

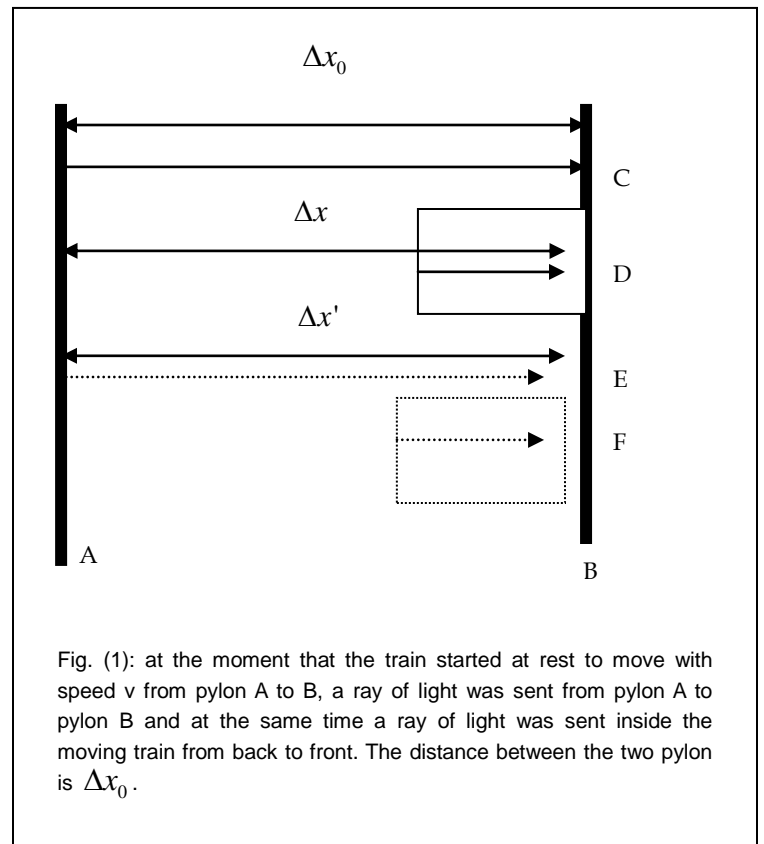


Fig. (1): at the moment that the train started at rest to move with speed  $v$  from pylon A to B, a ray of light was sent from pylon A to pylon B and at the same time a ray of light was sent inside the moving train from back to front. The distance between the two pylon is  $\Delta x_0$ .

According to my new Lorentz transformation equations, if the observer on the ground sees the front of the moving train arrives to pylon B and passed the distance  $\Delta x_0$  between the two pylons, at this moment he sees the light beam which sent from back to front does not arrive to the front, where if the length of the moving train is  $L$ , then the light beam is at a distance  $L'$  from the back of the moving train -at point D in fig. (1)- Where

$$L' = \sqrt{1 - \frac{v^2}{c^2}} L$$

And at the same time the light beam is at a distance  $\Delta x$  from pylon A for the observer on the ground where

$$\Delta x = \sqrt{1 - \frac{v^2}{c^2}} \Delta x_0$$

While, at this moment the observer on the ground sees the ray of light that was sent from pylon A arrives to pylon B at point C at a time separation  $\Delta t_0$  according to his clock on the ground, where

$$\Delta t_0 = \frac{\Delta x_0}{c} \quad (15)$$

Where  $c$  is the speed of light in vacuum. At this moment for the observer on the moving train during the motion, the front of the moving train does not arrive pylon B, but it is still approaching to it, where he sees the front of his moving train is at a distance  $\Delta x'$  from pylon A, The dotted line of the moving train in fig. (1) illustrates the location of the front of the moving train for the observer on the moving train at the moment that the observer on the ground sees the front of the moving train arrives pylon B, where in this case we have

$$\Delta x' = \sqrt{1 - \frac{v^2}{c^2}} \Delta x_0 \quad (16)$$

And at this moment for the observer on the moving train, his clock on the moving train registers the time separation  $\Delta t'$  where

$$\Delta t' = \sqrt{1 - \frac{v^2}{c^2}} \Delta t_0 \quad (17)$$

Also at this moment the observer on the moving train sees the light beam which sent from back does not reach the front, where it is still at a distance

$$L' = \sqrt{1 - \frac{v^2}{c^2}} L \quad \text{from the back (point F in fig. (1)), and he}$$

sees at this moment the light beam which sent from pylon A is moving with the same time with the light beam which sent from the back (point E in fig (1)).

Since the light beam that was sent from back to front is sent in the same direction of the velocity of the moving train, thus for the observer on the ground and from fig. (1), we have

$$\Delta x = \Delta x_0 - v \Delta t_0$$

Since the light speed on the moving train is  $c$  the speed of light in vacuum locally for the observer on the moving train, thus from eqs. (16) & (17) we get

$$\Delta x = \frac{\Delta x'}{\sqrt{1 - \frac{v^2}{c^2}}} - \frac{v \Delta t'}{\sqrt{1 - \frac{v^2}{c^2}}} \quad (18)$$

And

$$\Delta t = \Delta t_0 - \frac{v \Delta x_0}{c^2}$$

Thus from eqs. (16) & (17) we get

$$\Delta t = \frac{\Delta t'}{\sqrt{1 - \frac{v^2}{c^2}}} - \frac{v \Delta x'}{c^2 \sqrt{1 - \frac{v^2}{c^2}}} \quad (19)$$

In our new interpretation to the Lorentz transformation in the case of  $y$  and  $z$  axis we have

$$\Delta y = \frac{\Delta y'}{\sqrt{1 - \frac{v^2}{c^2}}}$$

$$\Delta z = \frac{\Delta z'}{\sqrt{1 - \frac{v^2}{c^2}}}$$

The change in  $y$  and  $z$  coordinates in my transformation leads to illustrate the negative result in the Michelson-Morley experiment.

This transformation which we adopted illustrated that the Lorentz transformation is vacuum energy dependent. We have seen that both the observer on the moving train and the observer on the ground will be agreed at the measured length of the moving train to be  $L$  same as if the train is stationary, and at the same time they will be agreed at the length between the two pylons to be  $\Delta x_0$  during the motion.

For the observer on the moving train, when he sees the front of his moving train arrives pylon B, he sees also at this moment the light beam which sent from back arrives the front of his moving train and the passed distance at this moment for him is  $\Delta x' = \Delta x_0$  which leads to eq. (10), in a time separation

$$\Delta t' = \Delta t_0$$

Which leads to eq. (5), according to his clock on the moving train. And at the same time he sees the light beam which sent from pylon A arrives pylon B, where the light beam which sent from pylon A moves at the same time with the light beam which sent from back to front. At this moment- during the motion- the observer on the ground sees the moving train passed pylon B and it is at a distance

$$\Delta x = \frac{\Delta x_0}{\sqrt{1 - \frac{v^2}{c^2}}}$$

from pylon A, which leads to eq. (9), and his clock on the ground registered a time separation

$$\Delta t = \frac{\Delta t_0}{\sqrt{1 - \frac{v^2}{c^2}}}$$

which leads to eq. (4), where at this time the observer on the ground sees the light which sent from back arrives the front of the moving train. This is agreed and interpreting with we proposed in section 2, where at this moment both the observer on the ground and the observer on the moving agree that the light beam which sent from the back arrives the front of the moving train.

According to our interpretation to the Lorentz transformation, it is impossible during the motion that both observer on the ground and the observer on the moving train agree that the

train arrived pylon B at the same time. This is the core of the Heisenberg uncertainty principle when we deal with the four vectors in my new interpretation to the Lorentz transformation.

Now let's propose another thought experiment. Suppose the train moves from pylon A to pylon B and the ray of light is sent from pylon B to pylon A in the opposite direction of the velocity, and at the same time a ray of light is sent inside the moving train from front to back as in fig. (2) in the opposite direction of the velocity. According to my MSRT interpretation to the Lorentz transformation, and according to fig. (2), when the train front arrives to pylon B and the moving train passed the distance  $\Delta x_0$  between the two pylons relative to the observer stationary on the ground, at this moment for the observer on the moving train, the train is at distance  $\Delta x'$  from pylon A where

$$\Delta x' = \sqrt{1 - \frac{v^2}{c^2}} \Delta x_0$$

as in eq. (16), in a time separation  $\Delta t'$  according to his clock where

$$\Delta t' = \sqrt{1 - \frac{v^2}{c^2}} \Delta t_0$$

as in eq. (17).

Thus, at this moment the observer on the ground sees the light beam which sent from the front does not arrive the back of the moving train. If the length of the moving train is  $L$ , where  $L$  is the same length if the train is stationary for the observer on the ground, then the light beam is at a distance  $L'$  from the front (point D in fig. (2)), where

$$L' = \sqrt{1 - \frac{v^2}{c^2}} L$$

And from fig. (2), we get also

$$\Delta x = \sqrt{1 - \frac{v^2}{c^2}} \Delta x_0$$

At this time also, the observer on the ground sees the light beam which sent from pylon B arrives pylon A (point C in fig. (2)). Now, since the light beam is sent in the opposite direction of the velocity of the moving train inside the moving train, then we have for the observer on the ground

$$\Delta x = \Delta x_0 + v \Delta t_0$$

$$\Delta t = \Delta t_0 + \frac{v \Delta x_0}{c^2}$$

And thus from eqs. (16) & (17) we get

$$\Delta x = \frac{\Delta x'}{\sqrt{1 - \frac{v^2}{c^2}}} + \frac{v \Delta t'}{\sqrt{1 - \frac{v^2}{c^2}}}$$

And

$$\Delta t = \frac{\Delta t'}{\sqrt{1 - \frac{v^2}{c^2}}} + \frac{v \Delta x'}{c^2 \sqrt{1 - \frac{v^2}{c^2}}}$$

$$\Delta y = \frac{\Delta y'}{\sqrt{1 - \frac{v^2}{c^2}}}$$

$$\Delta z = \frac{\Delta z'}{\sqrt{1 - \frac{v^2}{c^2}}}$$

At this moment for the observer on the moving train, the light beam which sent from the front is at distance  $L'$  from the front,

where it does not arrive the back yet, where  $L' = \sqrt{1 - \frac{v^2}{c^2}} L$

(point F in fig. (2)), and he sees at this time also the light beam which sent from pylon B is moving with the same time with the light beam which sent from the front, where when the observer on the moving train sees the front of the his train arrives pylon B, he sees also at the same time the light beam which sent from the front arrives the back, and also at the same time he sees the light beam which sent from pylon B arrives pylon A. In this case for the observer on the moving train

$$\Delta x' = \Delta x_0$$

Which leads to eq. (10), and  $\Delta t' = \Delta t_0$  according to his clock on the moving train, which leads to eq. (5).

At this time for the observer on the ground the front of the moving train passed pylon B, and it is at a

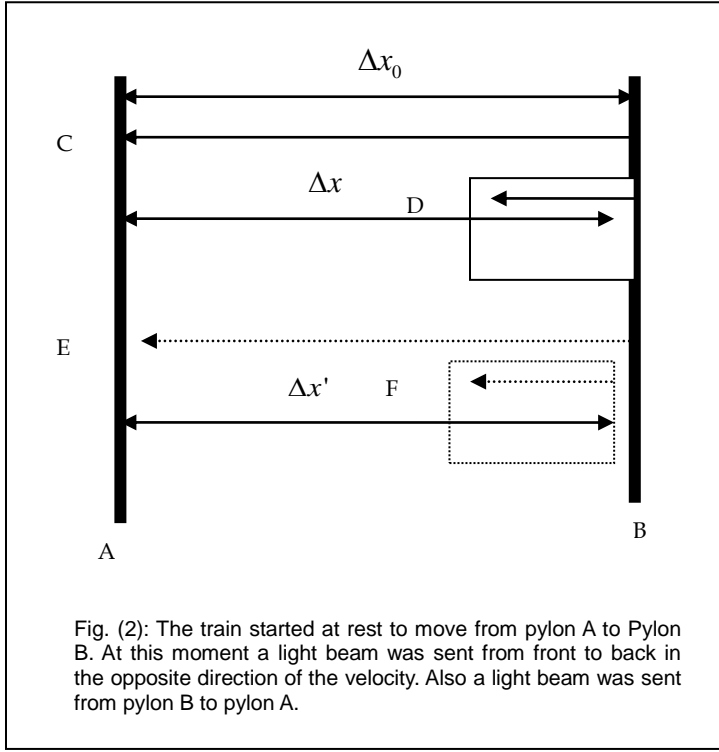
distance  $\Delta x$  from pylon A, where  $\Delta x = \frac{\Delta x_0}{\sqrt{1 - \frac{v^2}{c^2}}}$ , which

leads to eq. (9). in time separation  $\Delta t$  according to his earth clock, where

$$\Delta t = \frac{\Delta t_0}{\sqrt{1 - \frac{v^2}{c^2}}}$$

which leads to eq. (4), and at this time the observer on the ground sees the light beam which sent from the front arrives the back of the moving train. This is agreed and interpreting with what we discussed in section 2. That interprets our proposition, when we proposed in section 2, if the light beam is sent inside the moving train in the direction of the velocity or in the opposite direction of the velocity, then both the stationary observer on the ground and the observer on the

moving train are agreed that light beam is sent from the first edge of the moving train and then they will be agreed at arriving the light to the second edge but in a different space and time separation during the motion.



In my new interpretation to the Lorentz transformation we keep on the consistency of the speed of light locally to be the speed of light in vacuum. In my proposition, I adopted the principle of quantum theory (Copenhagen school) that the observer has the main formation of the phenomenon. And I refuse in my proposition the principle of the objective existence of the phenomenon that is existed in Einstein's SRT and then his interpretation to Lorentz transformation equations. In my proposition, both the observer on the ground and the rider of the moving train will agree at the measured length of the moving train to be  $L$  same if the train was stationary and then at the measured distance between the two pylons A&B, where each observer creates his own picture about the location of the moving train and the time separation. According to my proposition in my modified relativity I predicted also the observer on the moving train will see the clock of the observer on the ground is moving in a similar rate of his clock motion on the moving train, that means the observer on the moving train sees the events on the ground in his present which are considered as past relative to the observer on the ground as we shall see in the following.

According to my new interpretation to the Lorentz transformation, we have seen for the observer on the ground, according to his clock, when the light beam is sent from pylon A to pylon B, it takes less time separation than when the light beam is sent from back of the moving train to the front in the same direction of the velocity. Also when the light beam is

sent from pylon B to pylon A it takes less time separation than when the light beam is sent from front to back inside the moving train in the opposite direction of the velocity of the moving train. In this case we have seen for the observer on the ground the time separation for the light beam to pass the length of the moving train from back to front in the same direction of the velocity is the same time separation for the light beam to pass the length of the moving train from front to back in the opposite direction of the velocity of the moving train according to the clock of the observer on the ground. Thus according to my new interpretation to the Lorentz transformation we have get if the light beam is sent inside the moving train in any direction in the  $x$ ,  $y$ , or  $z$ , then the measured speed of light  $c'$  for the observer on the ground according to his clock is independent on the direction of the velocity of the moving, and thus we get

$$c' = \sqrt{1 - \frac{v^2}{c^2}} c = \sqrt{c^2 - v^2} \quad (20)$$

Which leads to eq. (2) according to my new interpretation to the Lorentz transformation equation according to my modified relativity.

Since my new interpretation to the Lorentz transformation leads to the wave-particle duality, thus if the observer on the moving train sent a particle of velocity  $v_p$  locally which is equivalent to the relativistic kinetic energy  $E_k$ , in this case the measured speed of the particle for the observer on the ground when the particle passed all the length of the moving train inside the moving train according to his clock is  $v'_p$

$$v'_p = \sqrt{1 - \frac{v^2}{c^2}} v_p \quad (21)$$

Where according to the eq. (21) for the observer on the ground the measured velocity of the moving particle inside the moving train is independent on the direction of the velocity of the train same as in the case of the light beam, and it is less than the equivalent velocity of the kinetic energy of the particle and when the particle exits the moving train, that causes a red shift or blue shift measured by the observer on the ground. In this case the measured Doppler Effect will be slightly different from the computed by Einstein SRT according to eq. (21).

The dependence of my transformation on the vacuum energy can be illustrated from the measured relativistic volume of the moving train, where from my Lorentz transformation the measured relativistic volume of the moving train for the observer on the ground is given as

$$V = \Delta x \Delta y \Delta z = \frac{\Delta x' \Delta y' \Delta z'}{\left(1 - \frac{v^2}{c^2}\right)^{3/2}} \pm \frac{\Delta y' \Delta z' v \Delta t'}{\left(1 - \frac{v^2}{c^2}\right)^{3/2}}$$

Thus

$$V = \frac{V'}{\left(1 - \frac{v^2}{c^2}\right)^{3/2}} \pm \frac{A' v \Delta t'}{\left(1 - \frac{v^2}{c^2}\right)^{3/2}}$$



Here  $V$  is the relativistic volume of the moving train for the observer on the ground,  $V'$  is the measured volume locally for the rider of the moving train, and  $A'$  is the area of the front or the back of the train locally for the rider. Since both of the observer on the ground and the rider of the moving train are agreed at the lengths of the moving train in  $x$ ,  $y$  and  $z$  direction, thus, the equation above illustrating the increase of the vacuum energy of the moving train for the observer on the ground, and that leads to the Lorentz factor is equivalent to the refractive in optics or the potential in Schrödinger equation in quantum.

My interpretation of the Lorentz transformation illustrates what is the wave-function of Heisenberg who defined it as "it is a mixture between two things, the first is the reality and the second our knowledge to this reality" [1]. My paper "The Comological Theory" illustrates the philosophical aspects of my modified relativity and how it is related to the Copenhagen school in quantum theory. What I proposed in my Lorentz transformation illustrates what is the interference and diffraction in optics which led to discovering the wave mechanics in quantum theory.

In the literature of relativity, space-time coordinates and the energy/momentum of a particle are often expressed in four-vector form. They are defined so that the length of a four-vector is invariant under a coordinate transformation. This invariance is associated with physical ideas. The invariance of the space-time four-vector is associated with the fact that the speed of light is a constant. The invariance of the energy-momentum four-vector is associated with the fact that the rest mass of a particle is invariant under coordinate transformations. In our previous thought experiments we proposed a null vector or lightlike. In our previous examples, the null vector for the observer stationary on the moving train according to his coordinates system is

$$c^2 \Delta t'^2 - \Delta x'^2 - \Delta y'^2 - \Delta z'^2 = 0$$

and then by my new Lorentz transformation equations we have also relative to the observer on the ground

$$c \Delta t^2 - \Delta x^2 - \Delta y^2 - \Delta z^2 = 0$$

We have seen previously, Lorentz transformation is applied during the motion, and as we have seen in our previous examples, when the observer on the ground sees the front of the moving train arrives to pylon B, at this moment it is impossible that the observer on the moving train sees the front of the moving train arrives pylon B, both of them are not agreed that the front of the moving train arrives to pylon B, and this is the main difference between my MSRT and the SRT of Einstein. According to my MSRT when the observer on the moving train looks at the clock stationary on the ground, he will see the clock on the ground is moving in a similar rate of his clock motion, and since his clock is considered stationary on the moving train, then he will confirm that the clock on ground is stationary also same as his clock on the moving train. From that also he will agree with the observer on the ground on the measured rest mass of the clock. When the clock on the ground moves with speed  $v$  on the ground, in this

case both the observer on the ground and the observer on the moving train are agreed at measured speed of the moving clock and then the relative measured mass, and the kinetic energy and the momentum, and the clock is moving slower than their clocks and they will agree at the slowing rate. Furthermore according to my MSRT, I could rescue the special relativity from the Twin paradox, Ehrenfest paradox, Ladder paradox and Bell's spaceship paradox as we have seen previously.

#### 4 THE LENGTH CONTRACTION ACCORDING TO MSRT

To understand the concept of the length contraction according to the MSRT [23], let's assume Sally is driving a train with constant velocity  $0.87c$  between the two pylons A&B, and the distance between the two pylons is 100 m. let's assume also at the moment of reaching the train at pylon B, Sara who was stationary on the earth could stop the train instantaneously by a remote control. In this case we neglect the deceleration because this case is equivalent to some cases in quantum as we shall see in following sections. Thus, in this case we consider the velocity of the train is changed from  $0.87c$  to zero in a zero time separation at the moment of reaching to Pylon B. Thus, by this condition we have

$$\begin{aligned} v &= 0 \text{ at } L = 0 \\ v &= 0.87c \text{ at } 0 < L \leq 100 \text{ m} \\ v &= 0 \text{ at } L = 100 \text{ m} \end{aligned}$$

The concept of the length contraction which is adopted by the MSRT [23], [24], [28] is agreed with the concepts, principles and laws of quantum theory (Copenhagen School) [10], [17]-[22].

Subsequently, according to MSRT [23] during the motion, when Sara sees the train reached to pylon B, at this moment Sally will not see the train reached at the second pylon B, it is still in the middle of her trip at 50 m from pylon A, and thus it is still approaching to the second pylon B. Subsequently, according to this interpretation, when Sara sees the moving train at a distance  $\Delta x$ , at this moment Sally will see her

moving train is at the distance  $\Delta x' = \sqrt{1 - \frac{v^2}{c^2}} \Delta x$ . This

interpretation is agreed with the concept of Heisenberg to the wave function, where the observer has the main formation of the phenomenon. And by this interpretation Sally and Sara create their own pictures about the location of the moving train. Now, for Sara, the measured velocity of the moving

train is given as  $v = \frac{\Delta x}{\Delta t} = 0.87c$  which is equal to the

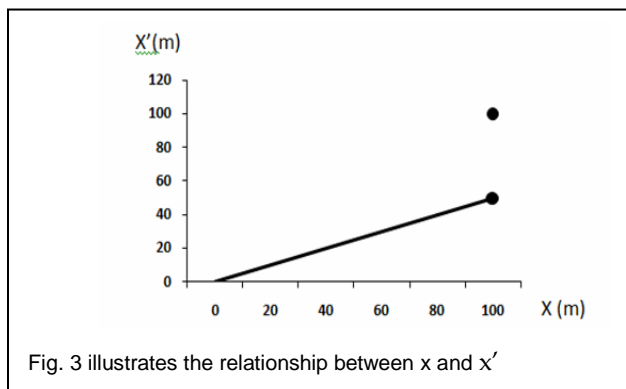
equivalent velocity of the kinetic energy owned by the moving train. For Sally (who is the driver of the train) there are two states that the train existed instantaneously, the first one is the state of motion, and the measured velocity of the train at this state for Sally is given as

$$v' = \frac{\Delta x'}{\Delta t'} = \frac{\sqrt{1 - \frac{v^2}{c^2}} \Delta x}{\sqrt{1 - \frac{v^2}{c^2}} \Delta t} = v = 0.87c$$

And this measured velocity is equal to the measured velocity equivalent to the kinetic energy owned by the moving train. The other state is the state of stationary, and the predicted velocity of the train for Sally at this state is given as

$$v' = \frac{\Delta L'}{\Delta t'} = \frac{\Delta L}{\sqrt{1 - \frac{v^2}{c^2}} \Delta t} = \frac{v}{\sqrt{1 - \frac{v^2}{c^2}}} = \frac{0.87c}{\sqrt{1 - (0.87)^2}} = 1.74c$$

Those two states of the train are separated by a distance equals to 50m, where Sally will think her train passed this distance in a zero time separation as seen in fig. 3, and then Sally will think the distance of 100m was passed by her train with velocity equals to 1.74c which is greater than the speed of light in vacuum. This measured velocity is not real, as we have seen the train hasn't moved with speed greater than the speed of light in vacuum locally for Sara, but because of the time dilation, and as we have seen in (4)&(6), events are occurring in the frame of the moving train in a slower rate than on the earth surface, and then the clock of the moving train will compute a time separation of the event less than the earth clock. The difference of time between what is computed by the train clock of Sally at the state of stationary, and what is computed by the earth clock of Sara for the train to pass the distance 100m, we find this difference is negative, and this difference led Sally to think her train passed the distance 100m between the two pylons with speed greater than the speed of light in vacuum. From fig. 3, Sally would confirm that the distance between the interval  $50 < x' < 100$ m was not passed by her train. Her train was transformed from 50m to 100m in a zero time separation. For Sally time is contracted!



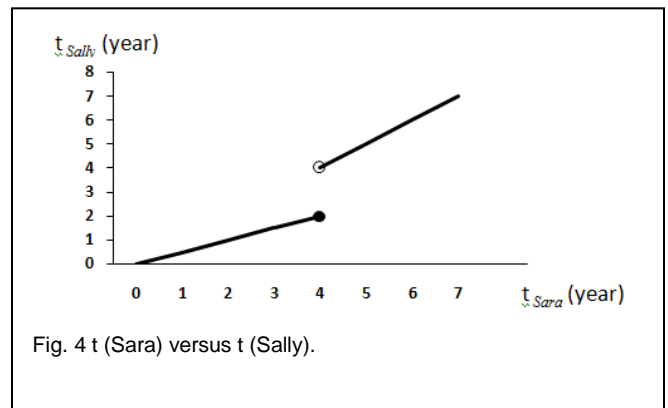
There is another consequence that produced by adopting this interpretation of the length contraction by MSRT. It is; how does Sally see the motion of Sara's earth clock comparing

to her clock during the motion. According to MSRT [23], Sally will see the motion of the earth clock of Sara is moving similar to her moving train clock, and by adopting this principle let's study the following thought experiment.

Suppose Sally during the motion of her train is looking at the stationary earth clock of Sara by applying this condition

$$\begin{aligned} v &= 0 \text{ at } \Delta t_{Sara} = 0 \\ v &= 0.87c \text{ at } 0 < \Delta t_{Sara} \leq 4 \text{ years.} \\ v &= 0 \text{ at } \Delta t_{Sara} > 4 \text{ years} \end{aligned}$$

Where  $\Delta t_{Sara}$  is the reading of Sara from her clock. We can draw  $\Delta t_{Sara}$  versus  $\Delta t_{Sally}$  as in fig. 4, where  $\Delta t_{Sally}$  is the reading of Sally from the clock of Sara. From fig. 4, we find two straight lines; the first one is for  $0 < \Delta t_{Sara} \leq 4$  years and its slope is equal to 0.5. The second line is for  $\Delta t_{Sara} > 4$  years, and its slope is equal to 1. We find from fig.4, the years between  $2 < \Delta t_{Sara} \leq 4$  years would not be determined by Sally, where her train was stopped at  $\Delta t_{Sara} > 4$  years, and thus she would find that Sara is living the years at  $\Delta t_{Sara} > 4$  years, while her last reading was equal to 2 years. That means the events were lived by Sara between  $2 < \Delta t_{Sara} \leq 4$  years were not be received by Sally during her motion.



in formulation of the phenomenon, where each one creates his own clock picture during the motion although they used the same clock. That is in contrast with the objective existence of the phenomenon.

## 5 THE VACUUM ENERGY AND THE EQUIVALENCE PRINCIPLE OF THE MSRT

Suppose Sally is living on a planet of mass  $M$ . and Sara is stationary very far from the planet in space. Now according to

the general relativity theory of Einstein, if Sara is looking at the clock of Sally, she will find the clock of Sally is moving in a slower rate than her clock according to the equation

$$\Delta t' = \sqrt{1 - \frac{2GM}{c^2 R}} \Delta t$$

Where,  $\Delta t'$  is the time separation measured by Sara from the clock of Sally,  $\Delta t$  is the time separation measured by the clock of Sara for Sara,  $G$  is the gravitational constant, and  $R$  is the radius of the planet. Thus from the equation above  $\frac{2GM}{R}$  is equivalent to  $v^2$ , that means it is equivalent that Sally is riding a train moving with constant speed  $v$ . Thus according to the previous discussion, if Sally is looking at the clock of Sara, then Sally will see the clock of Sara is moving at the same rate that her clock is moving, and what is Sally seeing now about Sara is done for Sara in the past. Now suppose both Sally and Sara are in the Lab. They cooled an empty tube to  $-237^\circ C$ . In this case the vacuum energy of the tube is less than the vacuum energy of the lab. That is equivalent; both of Sara and Sally are moving with velocity  $v$  relative to the tube, and then the events inside the lab are occurring in a slower rate than if the same events are occurring inside the tube for an observer located inside the tube. What is the consequence of that according to what we discussed previously is what we shall discuss in the next section.

## 6 QUANTUM TUNNELING AND QUANTUM ENTANGLEMENT

Quantum tunneling experiments have shown that 1) the tunneling process is non-local, 2) the signal velocity is faster than light, i.e. superluminal, 3) the tunneling signal is not observable, since photonic tunneling is described by virtual photons, and 4) according to the experimental results, the signal velocity is infinite inside the barriers, implying that tunneling instantaneously acts at a distance. We think these properties are not compatible with the claims of many textbooks on Special Relativity [1-9, 16]. The results produced by our modified special relativity theory MSRT [23] are in agreement with the results produced by quantum tunneling experiments as noted above, and thus it explains theoretically what occurs in quantum tunneling. It proves the events inside the tunneling barrier should occur at a faster rate than the usual situation in the laboratory. It provides a new concept of time contraction which is not existed in the SRT. The concept of time contraction in our theory is proven by many experiments where some enzymes operate kinetically, much faster than predicted by the classical  $\Delta G^\ddagger$ . In "through the barrier" models, a proton or an electron can tunnel through activation barriers [11, 12]. Quantum tunneling for protons has been observed in tryptamine oxidation by aromatic amine dehydrogenase [13]. Also British scientists have found that enzymes cheat time and space by quantum tunneling - a much

faster way of traveling than the classical way - but whether or not perplexing quantum theories can be applied to the biological world is still hotly debated. Until now, no one knew just how the enzymes speed up the reactions, which in some cases are up to a staggering million times faster [14]. Seed Magazine published a fascinating article about a group of researchers who discovered a bit more about how enzymes use quantum tunneling to speed up chemical reactions [15]. In order to understand what is occurring by quantum tunneling, let's study this thought experiment depending on the concepts and principles what we proposed previously.

Suppose Sara and Sally in the lab, they made a tube of length  $L$ . The vacuum energy inside the tube is negative compared to the vacuum energy of the lab. That means the vacuum energy of the tube is less than the vacuum energy of the lab. Now suppose the amount of the negativity comparing to the vacuum energy of the lab is equivalent that the observer in the lab are moving with speed equals to  $v$ . In quantum, the negativity of the vacuum energy inside the tube is depending on the difference of temperature, pressure and the effective density.

Now, suppose Sara entered inside the tube and Sally remained in the lab. After that, Sally sent a ray of light through the length of the tube. Now, since the vacuum energy is less inside the tube than outside in lab, which means the events inside the tube, will occur in a faster rate for Sara than Sally. That means the rate of occurring the information which define the location and time for the light beam inside the tube is faster for Sara inside the tube than Sally in lab. Thus, if Sara determined the light passed the distance  $\Delta x$  inside the tube, at this moment Sally will determine the location of the light

beam at  $\Delta x'$  inside the tube, where  $\Delta x' = \sqrt{1 - \frac{v^2}{c^2}} \Delta x$ , also for

Sara the distance  $\Delta x$  was passed by the light beam in a time separation  $\Delta t$  according to her clock. Also, for Sally the distance  $\Delta x'$  was passed by the light beam inside the tube in a time separation  $\Delta t'$  according to her lab clock. From that the

measured speed of the light beam for Sara is  $v = \frac{\Delta x}{\Delta t} = c$ ,

which is the speed of light in vacuum, and for Sally

is  $v' = \frac{\Delta x'}{\Delta t'} = \frac{\sqrt{1 - \frac{v^2}{c^2}} \Delta x}{\sqrt{1 - \frac{v^2}{c^2}} \Delta t} = c$ . Thus, both Sally and Sara will

agree at the measured speed of the light beam inside the tube. But, when Sara sees the light beam reached to the end of the tube and passed the distance  $L$  the length of the tube, at this moment for Sally, the light beam have not reached to the end

of the tube, it is still at  $\Delta x' = \sqrt{1 - \frac{v^2}{c^2}} L$ . After that the light beam will exit the tube, and will be seen for Sally at the

distance  $\Delta x' > L$ . In this case, for Sally, the light beam is transformed from the point  $\Delta x' = \sqrt{1 - \frac{v^2}{c^2}} L$  to the point

$\Delta x' > L$  in a zero time separation. Thus Sally will see the light beam is existed in two places or states at the same time. Now, when Sally sees the light beam at  $\Delta x' > L$  and she tries to compute the speed of the light beam when passed the distance  $L$  of the tube, she will find that the light beam passed this distance by a speed  $c' = \frac{L}{\Delta t'} = \frac{L}{\sqrt{1 - \frac{v^2}{c^2}} \Delta t} = \frac{c}{\sqrt{1 - \frac{v^2}{c^2}}}$ , where

for Sara inside the tube, the light beam passed the length of the tube with speed  $c = \frac{L}{\Delta t}$  which equals to the speed of light

in vacuum. Thus for Sally in the lab, she will think the light beam passed the length of the tube in a speed greater than the light speed in vacuum, but this measured speed is not real. In this case, although, Sally measured the light beam passing the length of the tube faster-than-light speed in vacuum, But according to that there is no violation for Lorentz transformation or causality. Where, according to Sara inside the tube, the light beam passing all the length of the tube with speed equals to the speed of light in vacuum.

Suppose now, Sally sent instead of a light beam, she sent a particle of kinetic energy  $E$  inside the tube, which is equivalent the particle to move with speed  $v(E)$ , as seen in fig. 5.

According to fig. 5, when Sara who is living inside the tube sees the particle reached at the end of the tube and passed the distance  $L$  of the tube in a time separation  $\Delta t$  according to her clock, at this moment for Sally who is in the lab, will see the particle location at  $\Delta x' = \sqrt{1 - \frac{v^2}{c^2}} L$ , and this distance was

passed at a time separation  $\Delta t' = \sqrt{1 - \frac{v^2}{c^2}} \Delta t$  according to Sally's lab clock. At this moment, the predicted velocity of the particle for Sara is  $v = \frac{L}{\Delta t} = v_p(E)$  and for Sally is

$$v' = \frac{\Delta x'}{\Delta t'} = \frac{\sqrt{1 - \frac{v^2}{c^2}} L}{\sqrt{1 - \frac{v^2}{c^2}} \Delta t} = v_p(E). \text{ At this moment the particle}$$

will exit the tube and will be seen for Sally out of the tube. Sally will think the particle is transformed from the point  $\Delta x' = \sqrt{1 - \frac{v^2}{c^2}} L$  to the point  $\Delta x' > L$  at a zero time

separation, and then the particle will be seen at two places or states at the same time for Sally. Sally will think the particle

passed the length of the tube with velocity equals to  $v' = \frac{L}{\sqrt{1 - \frac{v^2}{c^2}} \Delta t} = \frac{v_p(E)}{\sqrt{1 - \frac{v^2}{c^2}}}$ , and if  $v_p(E)$  is very close to  $c$ ,

in this case it is possible the predicted speed will be greater than the speed of light in vacuum for Sally depending on the negativity of the vacuum energy of the tube.

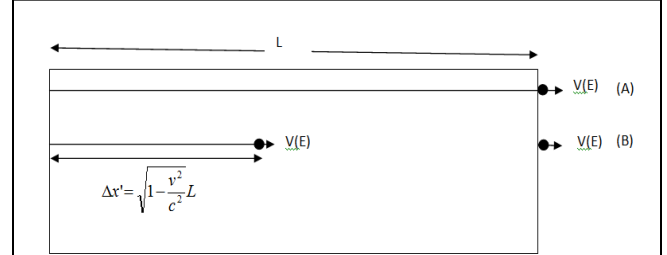


Fig. 5 (A) Sara who is living inside the tube will see the particle is passing all the length of the tube, and exit it with kinetic energy  $v(E)$ . (B) Sally who is in the lab will see the particle existed in two places at the same time, one place is at  $\Delta x' = \sqrt{1 - \frac{v^2}{c^2}} L$ , and the other place is at  $\Delta x' > L$ . Sally will think the particle is transformed from  $\Delta x' = \sqrt{1 - \frac{v^2}{c^2}} L$  to  $\Delta x' > L$  at a zero time separation. When Sally measures the kinetic energy of the particle at  $\Delta x' > L$ , she will find it is equal to the kinetic energy at the moment of sending the particle inside the tube

And in order to understand what a quantum entanglement is, let's study this thought experiment. Suppose Sally sent an electron inside the tube. The negativity of the vacuum energy of the tube is equivalent that Sally who is staying in the lab, moving with speed equals to  $v$ . Also, suppose Sally applied a magnetic field on the tube at a distance equals to

$$\Delta x' = \sqrt{1 - \frac{v^2}{c^2}} L \text{ as seen in fig. 5. Now for Sara inside the tube,}$$

she will see the electron passes through the magnetic field before Sally, and then it will be affected on the magnetic field. Now when the electron reaches to the end of the tube and passes the distance  $L$  the length of the tube. At this moment

Sally will see the electron is at  $\Delta x' = \sqrt{1 - \frac{v^2}{c^2}} L$ , and at this

moment she will see the electron is affected on the magnetic field. Also at this moment, Sally will see other picture for the electron at  $\Delta x' > L$ , and this picture of the electron at  $\Delta x' > L$  was affected by magnetic field as seen by Sara. And since the two pictures of the electron are seen by Sally in the lab at the same time. Sally will think at the moment of applying the

magnetic field on the electron at  $\Delta x' = \sqrt{1 - \frac{v^2}{c^2}}L$ , this effect

was transformed instantaneously to the electron at  $\Delta x' > L$ .

Existing an object in two states at the same time for an observer outside the system was verified experimentally by a team of scientists that has succeeded in putting an object large enough to be visible to the naked eye into a mixed quantum state of moving and not moving [25]. Furthermore there are many other experiments where done proving that quantum laws can be applied on macro objects, and that implies the macro and micro world are governed by the same laws [29]-[31]. This is supporting the main goal of the MSRT which unifying quantum theory (Copenhagen school) and relativity theory (special & general) with the same concepts, principles and laws.

## 7 THE CHERENKOV RADIATION

While electrodynamics holds that the speed of light in a vacuum is a universal constant  $c$ , the speed at which light propagates in a material may be significantly less than  $c$ . For example, the speed of the propagation of light in water is only  $0.75c$ . Matter can be accelerated beyond this speed (although still to less than  $c$ ) during nuclear reactions and in particle accelerators. Cherenkov radiation results when a charged particle, most commonly an electron, travels through a dielectric (electrically polarizable) medium with a speed greater than that at which light would otherwise propagate in the same medium. Cohen and Glashow [32] pointed out that these analogs to Cherenkov radiation must appear at superluminal speeds. According to the SRT of Einstein, in order a particle to move with speed equals to the speed of light  $c$  in vacuum, it is required the particle to be owned by a kinetic energy equals to infinity. Thus, what about if this particle moved with speed faster than the speed of light in vacuum? Faster-than-light speed in vacuum can't be interpreted and reconciled according to the SRT principles and equations, and thus Cherenkov radiation principle can't be interpreted and reconciled with the principles and equations of the SRT.

Cherenkov radiation principle can be interpreted and reconciled according to the MSRT. For example, suppose the tube that is existed in fig. 5 of length  $L$ . The negativity of the vacuum energy of the tube compared the vacuum energy of the lab is equivalent that the observer stationary on the lab are moving with speed  $0.87c$  relative to the tube. Now, if a neutrino is sent inside the tube of kinetic energy  $E_k$ . As we have seen previously, when the neutrino reached to the end of the tube and passed the distance  $L$  for an observer stationary inside the tube, then at this moment, for the observer of the lab, the neutrino is located at the distance

$L' = \sqrt{1 - \frac{v^2}{c^2}}L = \frac{L}{2}$ . Now, if there is a detector at the end of

the tube, that means, the neutrino is not passing through the space of the lab, in this case, for the observer on the lab, according to his clock, the neutrino passed the distance of the tube in a less time separation than it is required according to its kinetic energy. Now if the kinetic energy inside the tube of

the neutrino is equivalent to move in a velocity  $\sqrt{1 - \frac{v^2}{c^2}}c$

$< v_{neutrino} < c$ , which is according to our examples,  $0.5c$

$< v_{neutrino} < c$ , in this case when the neutrino is detected by the detector for the observer of the lab, he will think, the neutrino

was moving with speed equals to  $v'_{neutrino} = \frac{v_{neutrino}}{\sqrt{1 - \frac{v^2}{c^2}}}$ , and in

the case  $0.5c < v_{neutrino} < c$ , then the measured speed of the neutrino for the lab observer according to his clock is greater than  $c$ , the speed of light in vacuum, where,  $v'_{neutrino} > c$ . But, when the neutrino is detected by the detector without passing through the space of the lab, then, the neutrino will register an energy spectrum fully corresponding with what it should be for particles traveling at the speed of light and no more. The neutrino inside the tube will not exceed the light speed in vacuum locally. But if the lab observer removed the detector, and after that the neutrino passed through the space of the lab, in this case the neutrino would radiate an energy equivalent to the Cherenkov radiation. That is because the vacuum energy of the lab is greater than the vacuum energy of the tube, which is equivalent that the refractive index of the vacuum of the lab is greater than 1 comparing to the vacuum of the tube. The Cherenkov radiation is emitted when a particle travels in medium with speed  $v_p$  such that  $c/n < v_p < c$ , where  $n$  is the refractive index of the medium.

## 8 THE MODIFIED GENERAL RELATIVITY AND THE EXACT SOLUTION OF THE PIONEER ANOMALY

Is light bending by gravity or refracted? According to special relativity, light speed is constant and equals to light speed in vacuum for all inertial frames of reference. General relativity was formulated according to the concepts and principles of SR. Thus, according to GR, light speed must be constant, and thus to keep the constancy of the speed of light, Einstein proposed in his GR that, for an observer located far away from the gravitation field, this observer will see the light beam will be bended toward the big mass when passing through the gravitational field of the big mass. Einstein explained this bending of the light beam through the gravitational field because when the light beam is passing through the gravitational field, then for an observer located far away from the gravitational field will see this light beam is moving in a geodesic path, and that means the light beam will

passing longer distance through the gravitational field than if there is no gravitational field, and thus registering longer time separation for the event according to the clock of the observer far away from the gravitational field. Thus, according to that, the geodesic path is referring to the strength of gravitational field depending on the distance from the center of mass. According to our MSRT, we have seen how we keep on the consistency of the speed of light according our derivation to the Lorentz transformation equations and the equivalence of the Lorentz factor to the refractive index in optics which is related to the vacuum energy. From that, at the same time of keeping the consistency of the speed of light, in our MSRT, we keeping on the variability of the speed of light as existed in the concept of the refractive index in optics which depending on the vacuum energy. Thus by applying this concept on GR, taking into account the dependency of the strength of the gravitational field on the distance from the center of mass, and thus the dependency of the equivalent refractive index of the gravitation field on the distance from the center of mass. Thus, according to the modified general theory MGRT according to MSRT, I could reach to the exact solution to the Pioneer anomaly [35]. According to MGRT, if a particle or light beam passing through the gravitational field, then the measured speed of the particle or the light beam will be decreased for an observer far away from this gravitation field. Hubble's law can be interpreted according to this principle [35]. My solution to the Pioneer anomaly is more accurate than the proposed solution of the thermal origin of the Pioneer anomaly [36].

## 9 THE WORMHOLES AND THE FASTER-THAN-LIGHT TRAVEL

The impossibility of faster-than-light relative speed only applies locally. Wormholes allow superluminal (faster-than-light) travel by ensuring that the speed of light is not exceeded locally at any time. While traveling through a wormhole, subluminal (slower-than-light) speeds are used. According to GR, if two points are connected by a wormhole, the time taken to traverse it would be less than the time it would take a light beam to make the journey if it took a path through the space outside the wormhole. However, a light beam traveling through the wormhole would always beat the traveler. As an analogy, running around to the opposite side of a mountain at maximum speed may take longer than walking through a tunnel crossing it. In GR, the interpretation of faster-than-light is different from our interpretation although we accept that the impossibility of faster-than-light locally. According to our MGRT depending on our MSRT, both the local observer on the mountain and the observer located far away from the mountain will agree at the length of the distance passed, and the particle will move through the same path on the mountain for both observers. The particle will not walking through a tunnel crossing it. According to our MGRT depending on the MSRT, the particle will reach the opposite side of the mountain for the local observer before the observer far away seeing it on the opposite side. And if the observer sees the particle on the opposite side of the mountain in a less time

separation than the local observer, in this case there must be a distance was not seen by the observer far away that the particle passed it on the mountain. For that observer the particle transformed from point A to point B separated by a distance  $D$  on the mountain in a zero time separation. In my MSRT and MGRT, wormholes are an analogy of quantum tunneling and entanglement as illustrated in the previous sections which are depending on the negativity of the vacuum energy.

As we have seen in the case of faster-than-light in MGRT and MSRT there is no violation for the Lorentz transformation or causality, and our interpretation is solving the contradiction between quantum theory and relativity (general and special).

## 10 THE SPEED OF LIGHT ACCORDING TO THE MSRT

According to the SRT of Einstein, the speed of light in vacuum  $c$  is constant for all inertial frames of reference, and thus the inertial frames of reference are different in measuring space and time. There is no particle which owns rest mass greater than zero can reach or exceed the speed of light in vacuum. Einstein -in his SRT- refusing an absolute inertial frame of reference to exist. According to the MSRT, we have found that it is possible to measure the speed of a particle which owns rest mass greater than zero to move with a speed faster than light  $c$ . We have kept in the constancy of the speed of light  $c$  locally, and at the same time we illustrated how the variability of the speed of speed light. In the MSRT, the information is transmitting to us in the speed of light  $c$ , and the observer has the main formation of the phenomenon as adopted in quantum theory (the Copenhagen school). The main question that the MSRT answers is the question of Einstein that "how shall I see the universe if I'm riding a ray of light? But! The MSRT is modifying the question to be as "How shall I see the universe if I'm a ray of light?" For example, suppose a ray of light is transformed from point A to point B separated by a distance  $x$ . For an observer located in the earth surface, he will see the ray of light at point A first, and then he will see it at point B. And if the observer divided the distance  $x$  over the time separation of the trip  $t$  according to his clock, he will get the speed of light in vacuum  $c$ . But for the ray of light for itself, it will be at point A and B at the same time, and if we divided the distance  $x$  at infinity number of points, then for the ray of light for itself will exist at all the points of the distance  $x$  at the same time. That means for the ray of light for itself when it exists at B, it exists at A at the same time and it exists at any point between A and B at the same time. Thus, from that we get, for the ray of light for itself there is no past or future, but there is present only. For the ray of light for itself we can consider as if the space is zero because it can exist at two points A and B separated by a distance equals to infinity at the same time. At the same time also we can consider the speed of light for the ray of light for itself to be infinity, because it exists at two points A and B separated by a distance equals to infinity at the same time. The two definitions are equivalent to each other. But in the material world of the mass, the speed of light  $c$  which is locally constant is related to the rest mass of the system which is greater than zero. By creating the mass, it is created the space

and time, and it is created the speed of light  $c$  to be 299,792,458 meters per second for the system of mass, and then it is created what are called the past and the future for the mass system. The information is transmitted to the mass system by the present. The present of the mass system is defined by the collapse of the quantum wave function [24], [28]. Collapsing the quantum wave function leading the information to be transformed to past. According to the equivalence of mass and energy equation in the SRT, when all of my mass is transformed to energy or photons or ray of light, then how can I see the universe? According to the MSRT, I'll see all my life history without past or future. I'll live all my life history as a present without past or future. I live -at the same time as a present- each event that I lived in my mass world or what I would live in the future. I see myself while I was baby, child, youth and old at the same time at the present without past or future [24], [28]. In this case I can't determine who is before or after if I was baby, child, youth or old. Or who came first I or my father or my grandfather. All of us are existed at the same time or present. And thus! I can confirm now the chicken and the egg are existed at the same time or present!

## 11 TACHYON IS NOT EXIST ACCORDING TO THE MSRT

A tachyon or tachyonic particle is a hypothetical particle that always moves faster than light. Most physicists think that faster-than-light particles cannot exist because they are not consistent with the known laws of physics [26][27]. If such particles did exist, they could be used to build a tachyonic antitelephone and send signals faster than light, which - according to SRT- would lead to violations of causality [27]. Potentially consistent theories that allow faster-than-light particles include those that break Lorentz invariance, the symmetry underlying special relativity, so that the speed of light is not a barrier. In the MSRT I confirm that tachyons are not exist, but the possibility of faster than light measurement is exist without violation of Lorentz transformation or causality. To understand that, let's study this thought experiment according to the MSRT. Suppose Sally and Sara again! Sally is staying in the Lab, and Sara is a pregnant at the first day of pregnancy. Sara incident inside a tube of negative vacuum energy. The negativity of the vacuum energy of the tube is equivalent to Sally as moving with constant speed  $0.87c$ . According to the MSRT, Sally observes the clock of Sara inside the tube is moving similar to her lab clock motion. But Sara inside the tube observes Sally lab clock is moving slower than her clock. Thus, when Sara computes 9 months according to her clock inside the tube, at this moment Sally computes 4.5 months according to her lab clock or according to Sara's clock inside the tube. At this moments Sally observes Sara when she was at 4.5 month of pregnancy, while relative to Sara she is at 9 months of pregnancy, and after that Sara puts her baby and decided to leave the tube to the lab. When Sally observes Sara with a baby outside the tube in the lab, she will be surprised how Sara got the baby in 4.5 months. Sally has already observed Sara at 4.5 month of pregnancy. Sally has not observed Sara at  $4.5 < t \leq 9$  months of pregnancy. So, Sally who is an expert in physics and relativity will confirm that there is something unknown in the laws of physics. And to understand what happened according to the recent laws of

physics in the case of Sara, she proposed that Sara is transformed to tachyons which are always moving faster than light, and then these tachyons passed the time period  $4.5 < t \leq 9$  months to decay after that to Sara with a baby. But the proposition of tachyon violates causality and Lorentz invariance according to the recent laws of physics. But according to the MSRT, Sally will understand what happened with Sara and will understand there is no violation of causality or breaking Lorentz invariance in the case of Sara, and thus there is no particle known as tachyon!

## ACKNOWLEDGEMENT

I would like to thank my wife who helped me by her patient to perform this research, and also my children, Rose, Shahid, Majd and Taleb. They grew up now! but without seeing them growing up in front of my eyes. My love to my family, and the pain of traveling without them, that helped me to understand what is the meaning of space and time in relativity. Also, I would like to thank the great country, Switzerland, by using their trains, that opened my mind to understand Relativity more when I was riding the Einstein's train of Relativity. Finally, great thanks to the Swiss People, their smile always makes me optimistic among the painful moments.

## REFERENCES

- [1] G. Nimtz, A. Stahlhofen, " Evanescent Modes and Tunnelling Instantaneously Act at a Distance", AIP Conf. Proc. -- March 6, 2008 -- Volume 977, pp. 310-315.
- [2] G. Nimtz, W. Heitmann, Phys. Lett. A 196 (1994)p. 154.
- [3] G. Nimtz, A. Stahlhofen, " Macroscopic violation of special relativity", submitted Aug/5/2007, arXiv:0708.0681v1.
- [4] E. Merzbacher, "Quantum Mechanics", 2nd edition, John Wiley & Sons, New York (1970).
- [5] S. Gasiorowicz, Quantum Physics, John Wiley & Sons, New York (1996).
- [6] C.K. Carniglia and L. Mandel, Phys. Rev. D 3, 280 (1971).
- [7] G. Nimtz, Gen. Rel. Grav. 31, 737 (1999); G. Nimtz, Ann. Phys. (Leipzig), 7, 618 (1998).
- [8] O. Bryngdahl, Progress in Optics, 11, 167 (1973).
- [9] P. Weiss, Sci. News 157 (2000) p. 375.
- [10] Heisenberg, W., "Physics and beyond", London Allen & Unwin. , (1971).
- [11] Arcia-Viloca M, Gao J, Karplus M, Truhlar DG. How enzymes work: analysis by modern rate theory and computer simulations. Science. 2004 Jan 9;303(5655):186- 95. PMID 14716003.
- [12] Isson MH, Siegbahn PE, Warshel A. Simulations of the large kinetic isotope effect and the temperature dependence of the hydrogen atom transfer in lipoxigenase. J Am Chem Soc. 2004 Mar 10;126(9):2820-8. PMID 14995199.
- [13] Masgrau L, Roujeinikova A, Johannissen LO, Hothi P, Basran J, Ranaghan KE, Mulholland AJ, Sutcliffe MJ, Scrutton NS, Leys D. Atomic Description of an Enzyme Reaction Dominated by Proton Tunneling. Science. 2006 April 14;312(5771):237-41. PMID 16614214.
- [14] Upcoming drug revolution takes a quantum leap, www.cosmosmagazine.com/node/599, 25 August 2006.
- [15] Researchers explain how enzymes use quantum tunneling to speed up reactions, Maggie Wittlin, Seed, April 18, 2006.
- [16] G., Nimtz, A., Haibel, U., Walter, "Zero Time Space: How quantum tunneling broke the light speed", John Wiley & Sons, (2008).



- [17] Bohm, D., "Causality and Chance in Modern Physics", Routledge and Kegan Paul., (1984).
- [18] Popper, K. R., "Objective Knowledge", Oxford at the Clarendon Press., (1983).
- [19] Heisenberg, W., "Physics and Philosophy", Allien and Unwin, (1958).
- [20] Pais, A., "Einstein and The Quantum theory", (1979), Rev. of Modern Physics, vol. 51, No. 4.
- [21] Stapp, H. "The Copenhagen School Interpretation and the nature of space-time" American Journal of Physics, 40, 1098, (1972).
- [22] Roland, W. Clark, "Einstein: The Life and Time", Hodder Stoughton, London, Sydney, Auckland, Toronto(1979).
- [23] A. Almosallami, "A Modified Special Relativity Theory in the Light of Breaking the Speed of Light" <http://vixra.org/pdf/1111.0001v1.pdf>.
- [24] A. Almosallami, "The comalogical theory", <http://www.gsjournal.net/old/physics/azzam3.pdf>
- [25] Scientists supersize quantum mechanics, Nature, doi:10.1038/news.2010.130.
- [26] Lisa Randall, Warped Passages: Unraveling the Mysteries of the Universe's Hidden Dimensions, p.286.
- [27] Tipler, Ralph A.; Llewellyn (2008). Modern Physics (5th ed.). New York, NY: W.H. Freeman & Co. p. 54.
- [28] A. Almosallami,, "The Comalogical Theory", Toward a Science of Consciousness, Arizona, Tucson 2008,
- [29] Wave-particle duality of C60 molecules, Nature, 14 October 1999.
- [30] Olaf Nairz, Markus Arndt, and Anton Zeilinger, "Quantum interference experiments with large molecules", American Journal of Physics, 71 (April 2003) 319-325.
- [31] K. C. Lee, M. R. Sprague, B. J. Sussman, J. Nunn, N. K. Langford, X.-M. Jin, T. Champion, P. Michelberger, K. F. Reim, D. England, D. Jaksch, I. A. Walmsley (2 December 2011). "Entangling macroscopic diamonds at room temperature". *Science* 334 (6060): 1253–1256. doi:10.1126/science.121191.
- [32] Cohen and Glashow. arxiv: 1110.3763v2.
- [33] H. P. Robertson, Rev. Mod. Phys. 21, 378 (1949).
- [34] Michelson, Albert Abraham & Morley, Edward Williams (1887). "On the Relative Motion of the Earth and the Luminiferous Ether". *American Journal of Science* 34: 333–345.
- [35] A. AlMosallami, <http://vixra.org/abs/1109.0058>.
- [36] A. AlMosallami, <http://vixra.org/abs/1205.0006>.
- [37] Magueijo, João, "New varying speed of light theories", Reports on the Progress of Physics, 66 (2003) 2025.
- [38] Marcel Urban, François Couchot, Xavier Sarazin, Arache Djannati-Atai. The quantum vacuum as the origin of the speed of light. *The European Physical Journal D*, 2013; 67 (3) DOI: 10.1140/epjd/e2013-30578-7.
- [39] Gerd Leuchs, Luis L. Sánchez-Soto. A sum rule for charged elementary particles. *The European Physical Journal D*, 2013; 67 (3) DOI: 10.1140/epjd/e2013-30577-8.
- [40] Phys. Rev. Lett. 111, 211603 (2013).
- [41] Phys. Rev. Lett. 111, 211602 (2013).
- [42] A. Almosallami, <http://vixra.org/abs/1206.0002>.
- [43] Brown, Harvey R., Michelson, FitzGerald and Lorentz: the Origins of Relativity Revisited.
- [44] O'Connor, John J.; Robertson, Edmund F., A History of Special Relativity
- [45] Macrossan, Michael N. (1986), "A Note on Relativity Before Einstein", *Brit. Journal Philos. Science* 37: 232–34.
- [46] A. Halpern (1988). 3000 Solved Problems in Physics. Schaum Series. Mc Graw Hill. p. 688. ISBN 978-0-07-025734-4.
- [47] Relativity DeMystified, D. McMahon, Mc Graw Hill (USA), 2006, ISBN 0-07-145545-0.
- [48] Michelson, Albert Abraham & Morley, Edward Williams (1887). "On the Relative Motion of the Earth and the Luminiferous Ether". *American Journal of Science* 34: 333–345.