

## **New Physics by Table Top Experiments.**

Leo Vuyk,  
Architect,  
Rotterdam, the Netherlands.  
[LeoVuyk@Gmail.com](mailto:LeoVuyk@Gmail.com)

### **Abstract,**

Quantum FFF theory states, that the vacuum is seeded with fast oscillating massless Higgs but energetic oscillating particles (126 GeV), oscillating along a complex chiral tetrahedral vacuum lattice, which has the ability to transfer monopole Photons and Graviton information in bunches of oscillations, through the vacuum lattice with the local speed of light.

As a consequence there are no attraction forces on propeller shaped Fermions. Only the sum of the different kinds of monopole impulses combined with opposing Higgs impulses from all directions on real spinning Fermions are responsible for all energetic phenomena in the universe, even for gravity, called “Double LeSage gravity” or better: “Quantum FFF gravity”. These ideas are based on several simple table top experiments leading to the design for real 3D shaped sub quantum particles which should be responsible for the monopole/Higgs forces and Fermions and give solutions for anomalies like Ball Lightning, micro Comets and Silicon globule channelling by Quantum Knots..

### **Introduction.**

According to Le Sage gravity the vacuum is seeded with fast travelling corpuscles, impinging on mass carrying particles present inside massive bodies. The deflection of these vacuum particles after the impulse on the first body, should lead to a decline in vacuum pressure on a second object, tending to drive two bodies together.

However, I suggest, that the vacuum is seeded with fast oscillating energetic but massless Higgs particles, oscillating along a complex chiral tetrahedral vacuum lattice, which has the ability to transfer Photon and Graviton information in bunches of oscillations, through the vacuum lattice with the local speed of light.

As a consequence there are no attraction forces on the propeller shaped spinning Fermions. Only the sum of the different kinds of vacuum impulses from all directions on Fermions coined: “**Double Vector Hedgehogs**”, are responsible for all energetic phenomena in the universe.

Thus we could give such a gravity model the name: “**Double Le Sage gravity**”.

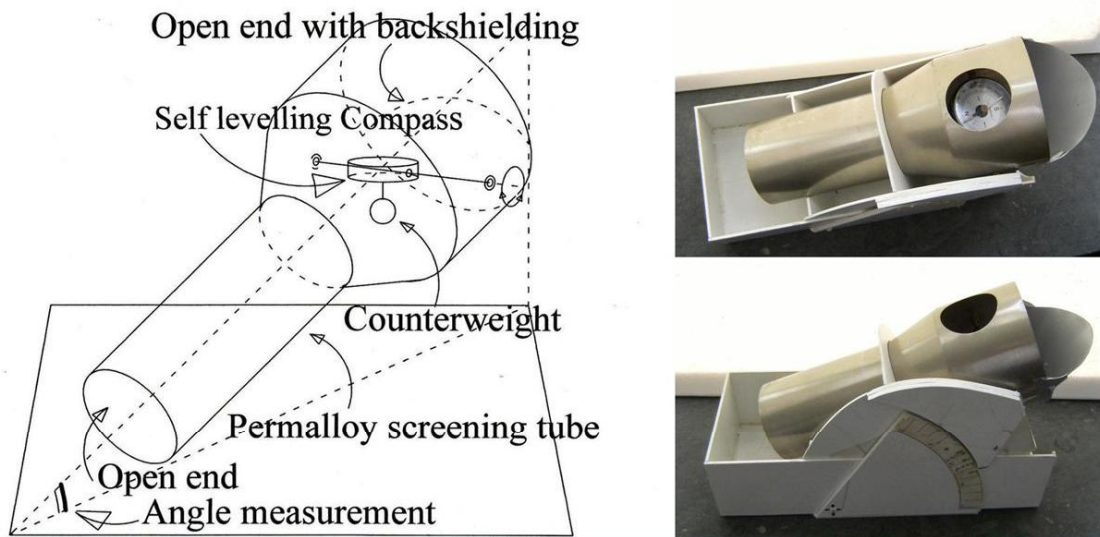
Fermions are assumed to be fast spinning 3 Dimensional propeller shaped strings, able to deform impinging Higgs particles into 5 different shaped 3-Dimensional Photon/Gluon particles and Gravitons. (Figure 1,2 and Ref. 3,4).

**In contrast with the contemporary “standard model”**, we count two Gluon/Photons (coded: LOL+ROR) for the electric quantum force, two Gluon/Photons (LOU+ROU) for the magnetic quantum force and one Gluon/Photon (UOU) as general particle for the x-ray, gamma ray and different light frequencies.

The 5 different shaped Gluon particles (Ref.3,4) are in contrast with Gravitons, supposed to be able to merge with Fermions into more complex compound Fermion particles (Quarks, including Muons and Tau Fermions). However if no Fermions are hit, then after a very short (Planck) distance the Gluon information is picked up and transferred as 5 different coded Photon information or as a Graviton encoded information, by the Higgs system simultaneous

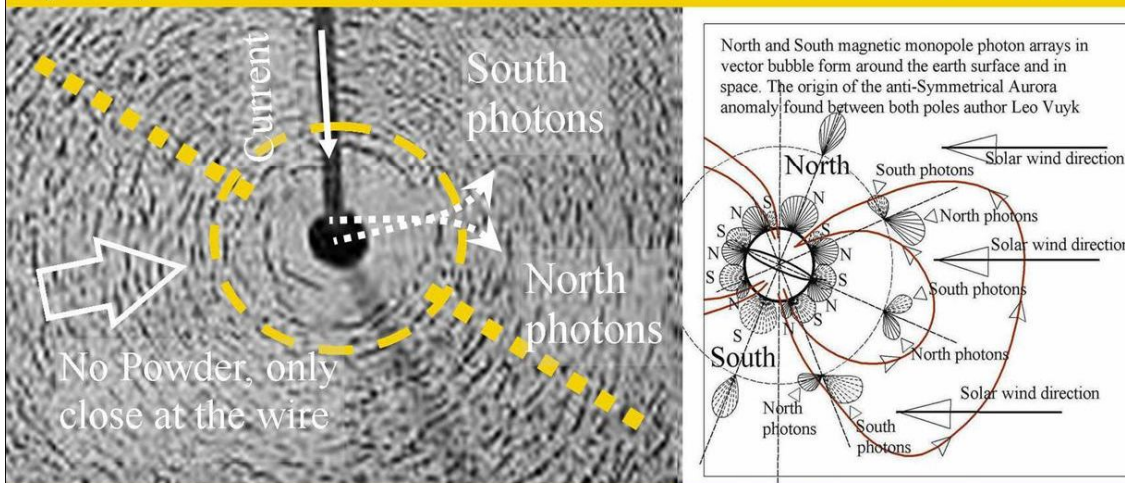
along different Lattice routes in the form of a bunch of entangled Higgs oscillations. (figure: 3) This is our proposal for the explanation of the so called particle-wave duality. The bunch of Higgs oscillations can impinge somewhere on a new Fermion and then the Photonic bunched wave function will COLLAPSE and change back into one Gluon particle, able to merge with the Fermion and originate measurable atomic change.

**Magnetic monopole telescope, able to show differences in the monopole Photon trajectories (with North or South characteristic) of the earth**



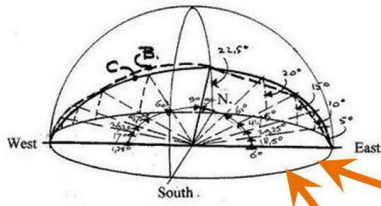
The screening tube is made of permalloy or mu-metal. The compass is a simple hobby compass balancing on copper bolts by a counterweight. Angle measurement is done, only if the compass needle points into a heading perpendicular to the axial symmetry axis of the tube. This is the indication of equal numbers of North and South photons -coming through the open end of the telescope- hitting the compass needle.

**Magnetic field variations by the “Curl” of Magnetic Monopole (N and South) Radiation around a wire and the earth.**



According to Quantum FFF theory, all magnetic fields can be presented as DUAL Magnetic Monopole Photon Vector Arrays. These monopole arrays undergo curvature. As a result, the magnetic field intensity around a the Earth and a wire is NOT dropping off with the square of the distance from the source!! The field become stronger polarized away from the source (See images). Close to the current transporting wire the magnetic field strength is zero due to the parallel trajectories of North an South Photons before curvation and polarisation of iron powder ( Author: Leo Vuyk)

Figure: i, Two table top experiments described in this essay..



Magnetic monopole butterfly shaped photon trajectory arrays (North and South) around the earth, as the origin of the Magnetic field lines (10) measured by compass readings and the origin of a unique local magnetic fingerprint in the form of a half circular Boundary layer measured by the magnetic mu-metal telescope.

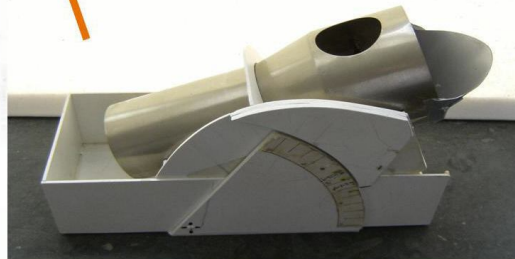
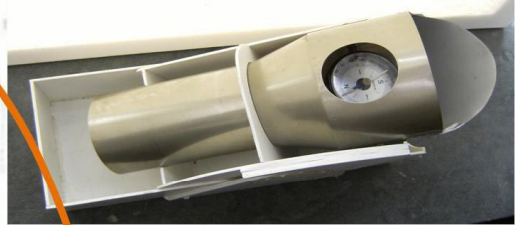
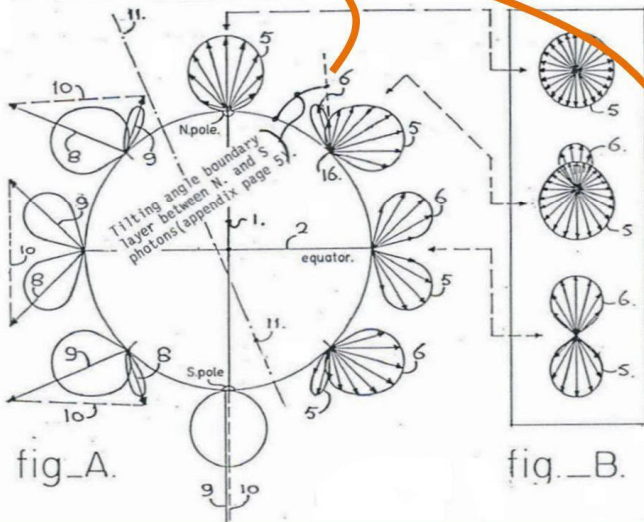
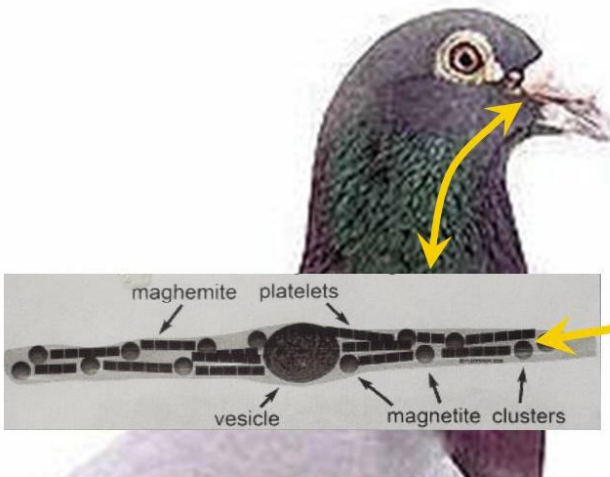


Figure A, is a cross section through the earth with the cross sections of several monopole vector arrays of 8x points at the earth surface. Figure B, represents the 3D monopole arrays seen from above, according to Quantum FFF theory.

Figure: ii

## Magneto monopole boundary shape telescope with magnetic fingerprint positioning.

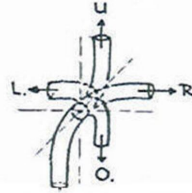


Pigeons like other birds, Butterflies and Turles seem to be able to navigate solely on the Earth magnetic field. According to **Quantum FFF theory**, magnetic fields are just like electric fields based on monopole photonic information vector fields.

There are photon vector fields for electric negative and positive charge and for magnetic North and South potential.

Figure: iii

Explanation of the codes:  
 U= Up rotation (180 degrees)  
 O= Unchanged circle.  
 L= Left rotation (90 degrees)  
 R= Right rotation (90 degrees)



Summary with oscillation routes : ( ↔ ) or the definite Graviton decay route ( → ) .

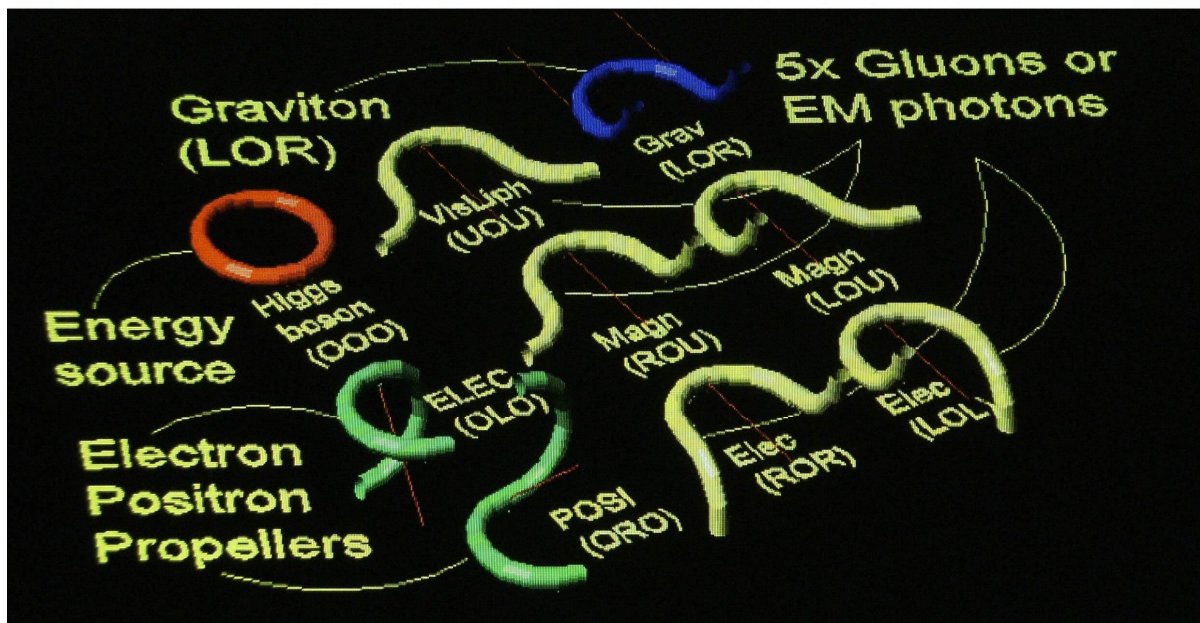
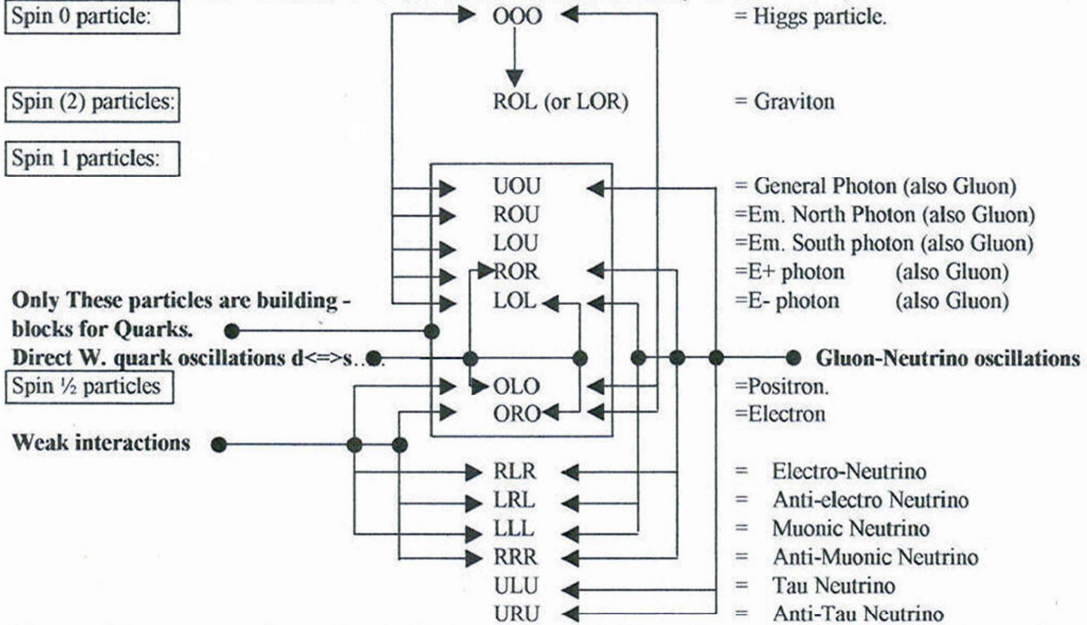
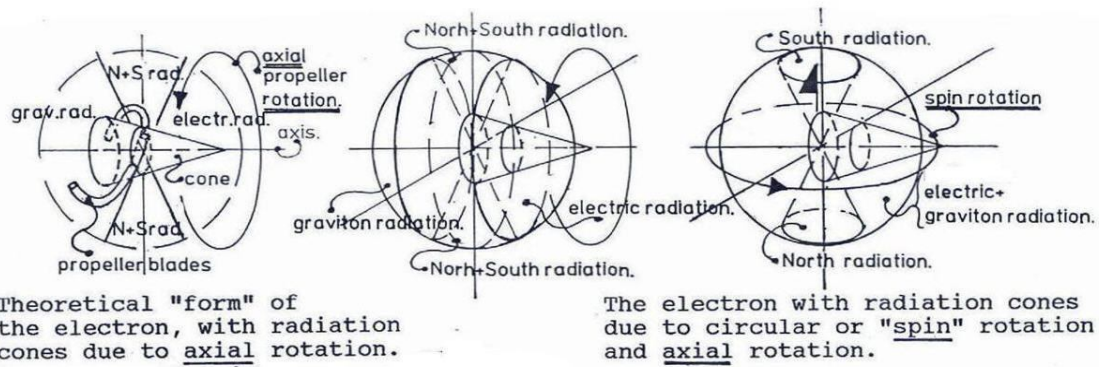
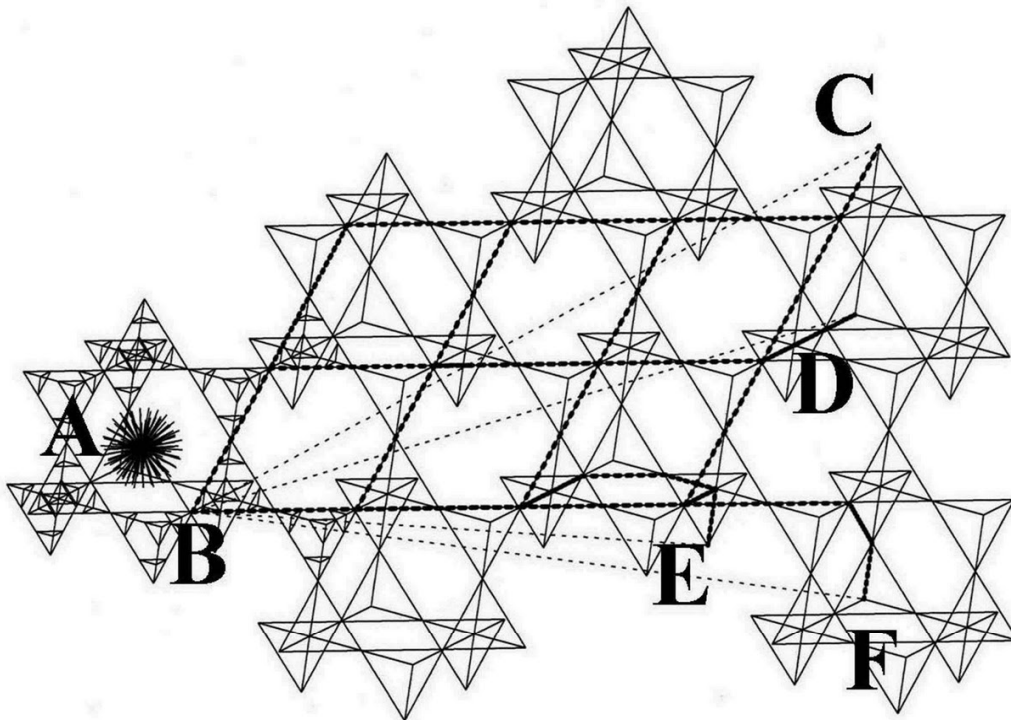


Figure 1, 3-Dimensional String Based Alternative Particle Model. (see Ref. 3)



**Figure 2, Double axial spin of Fermions with monopole Gluon- Graviton radiation cones. (Ref.3) After a short distance the 5 string shaped Gluons (2 Electric, 2 Magnetic and one general) can merge with Fermions into compound Quarks, or become a photonic wave, just like the Graviton.**



**Photon trajectories through the tetrahedral Chiral vacuum lattice.**

A photon is created as a deformed Higgs particle at position (A), thus as a single (Photon/Gluon) particle which after some distance changes form back into a Higgs particle (B).

The photon energy is transferred into the oscillating Higgs system and travelling through the vacuum lattice in the form of a BUNCH of entangled energetic Higgs oscillations with the local speed of light.

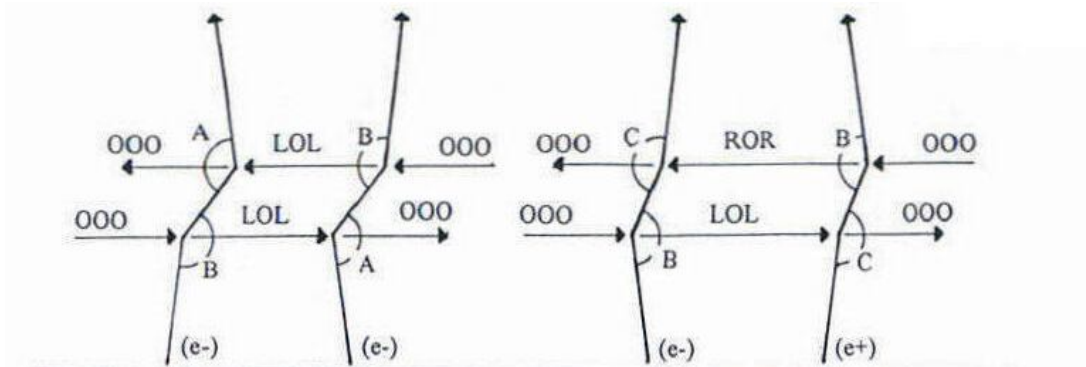
(To match the single photon double slit experiment)

After collision with a second Fermion, at locations C,D,E,F. the BUNCH of energy collapses and change the FORM of a local Higgs particle into the shape of the original Photon.

Five different shaped Gluons after some distance are called Photons.

Thus five different shaped Photons start their journey as Gluon. Author: Leo Vuyk.

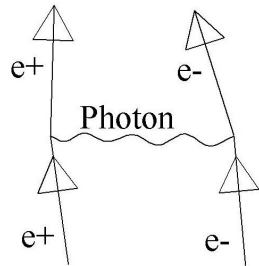
**Figure 3, Photon (bunch shaped) trajectories, through the Higgs vacuum lattice. (Ref. 4)**



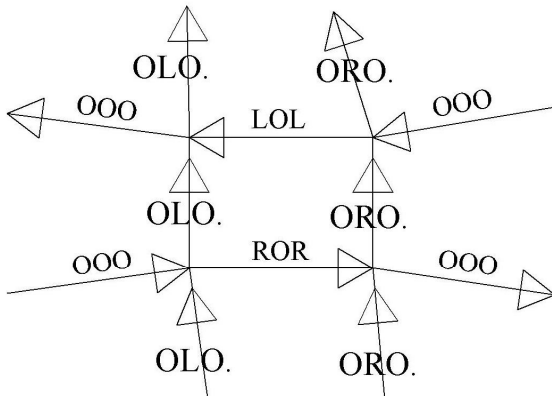
**Figure 4,** The principle of electric field force transfer by two monopole electric Photons (LOL and ROR) pushing Fermions with different impulses between two equal charged Fermions and different charged Fermions. The impulse of the Higgs particles is supposed to play an important role in combination with the monopole Photons to deflect the Fermions out of their trajectory.

A comparable system is supposed to be active for Gravitons. (Figure 7)

Feynman diagram for Electron Positron attraction, compared with Quantum FFF Theory repulsion solution.



Higgs Impulse diagram for ELECTRIC monopole radiation, according to Quantum FFF theory.

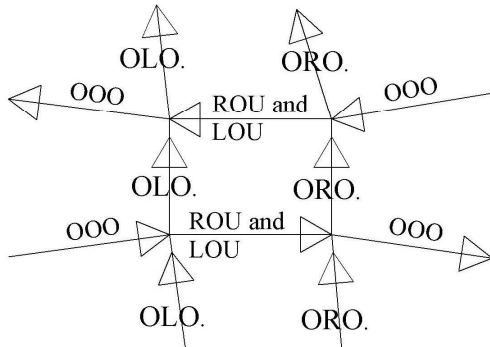


Fermionic impulse differences between Higgs (OOO) and TWO Electric monopole Gluon/Photons (LOL and ROR) on Fermions (OLO and ORO).

OOO changes form after collision with OLO resp ORO into ROR resp LOL and after second collision back again into OOO.

**Figure 5,** Comparison between electric Feynman diagram and Q-FFF Theory

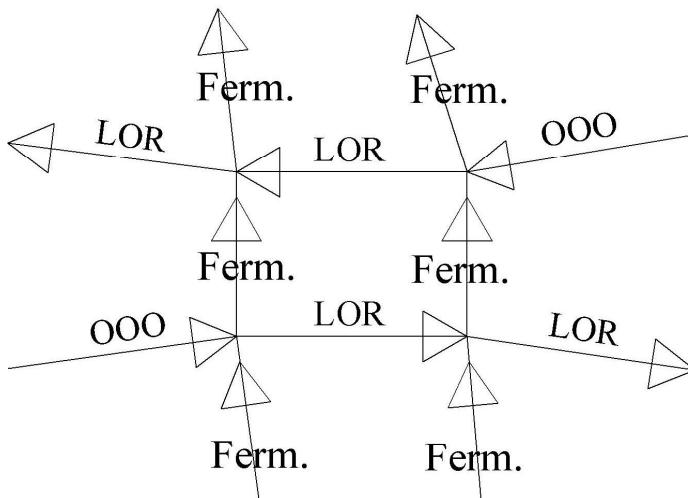
Higgs Impulse diagram for MAGNETIC monopole radiation, according to Quantum FFF theory.



Fermionic impulse differences between Higgs (OOO) and TWO Magnetic monopole photons (LOU and ROU) on Fermions (OLO and ORO).  
 OOO changes form after collision with OLO resp ORO into ROU and LOU and after second collision back again into OOO.

Figure 6,

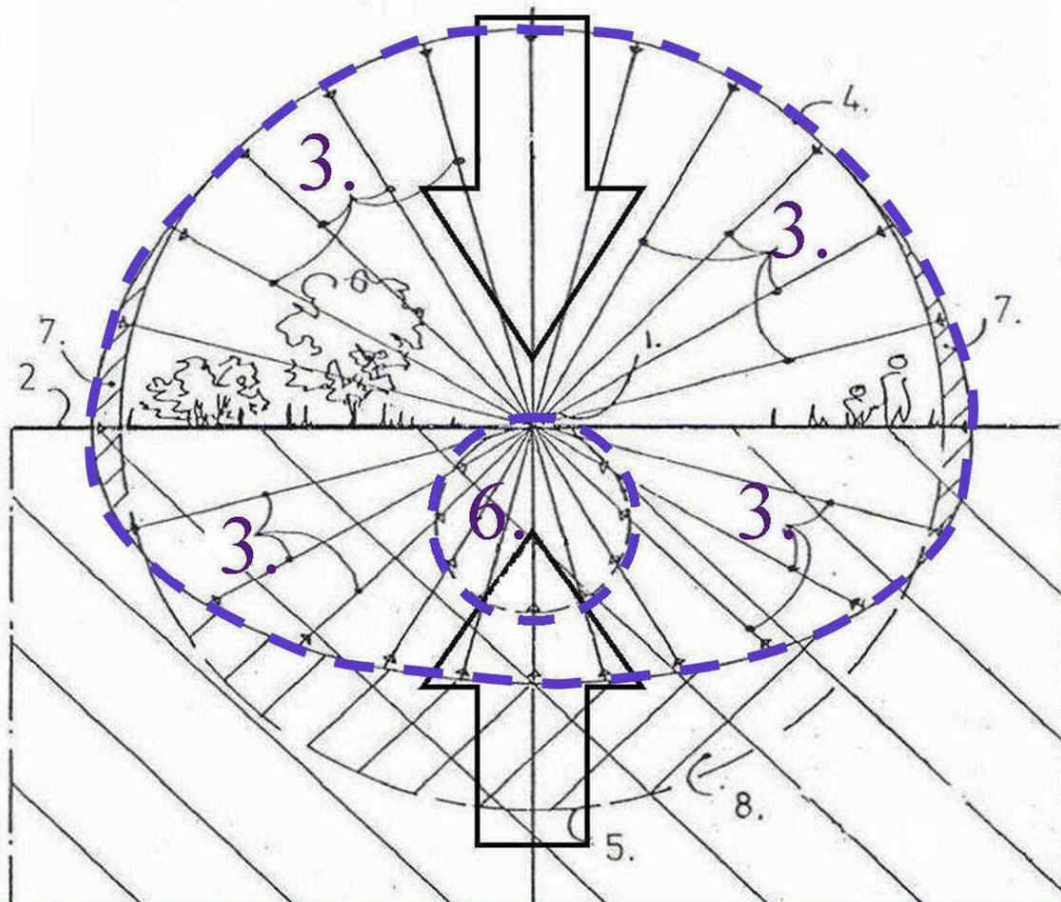
Higgs impulse diagram for Double LeSage Gravity, according to Quantum FFF theory.



Fermionic impulse differences with Higgs (OOO) and pushing Gravitons (LOR).  
 OOO changes form after collision into LOR.  
 Gravitons don't change shape after collision.

Figure 7, The principle of the Double Le Sage gravity force transfer between two Fermions. The impulse of the Higgs particles is supposed to be larger than the Graviton Impulse.

Quantum Gravity as pressure distribution of the oscillating dual Higgs/Graviton vector field.



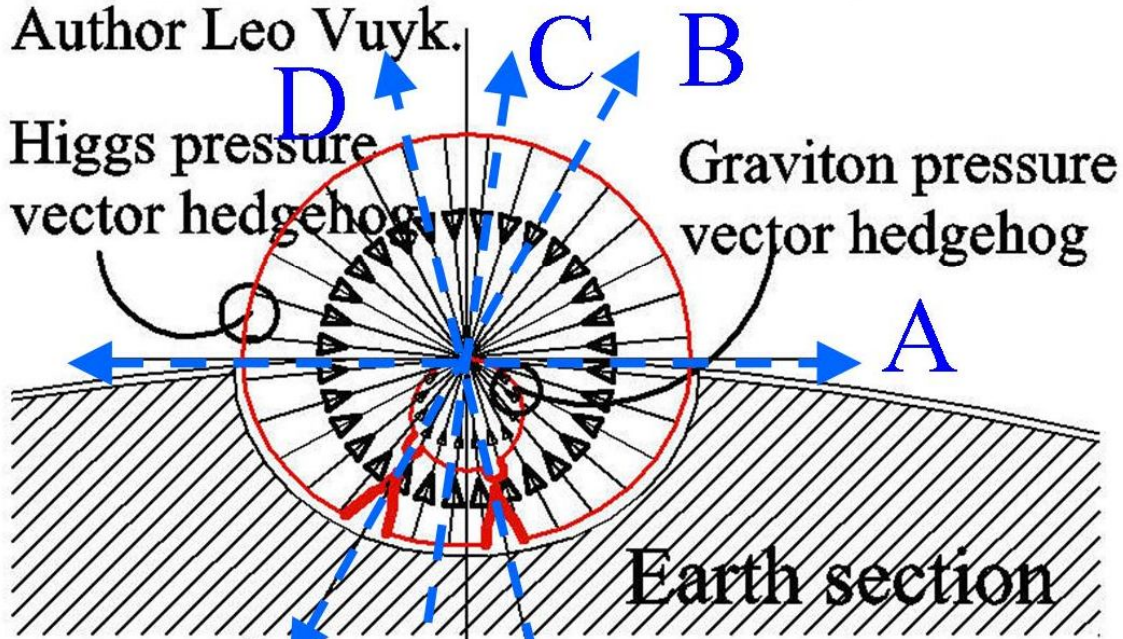
Cross section through the dual Higgs/ Graviton 3D vector field pressure distribution (or globular Hedgehog) on a point mass (1) located on earth's surface (2), according to Quantum FFF theory.  $3+4$ = Higgs vector field.  $6$ = Graviton vector field originated by the Higgs-graviton field transformation of the earth itself.  $7+8$ = differences with a perfect globular vector distribution. Field variables  $3+6$  are rendered as inversed arrows. (see also black hole pressure distribution without gravitons)

**Figure 8**, Cross section of the “**Double Vector Hedgehog**” of pushing forces around Fermions. The difference between Higgs vacuum pressure (3) and less effective Graviton pressure (6) on Fermions are the basic elements of (Double Le Sage) Q-FFF gravity.



Higgs/Graviton pressure vector hedgehogs acting on a mass carrying Quantum particle. The irregular distribution of mass inside the earth is supposed to influence the 3D pressure vector hedgehog according to the new Double LeSage gravity paradigm, see image below.

Author Leo Vuyk.

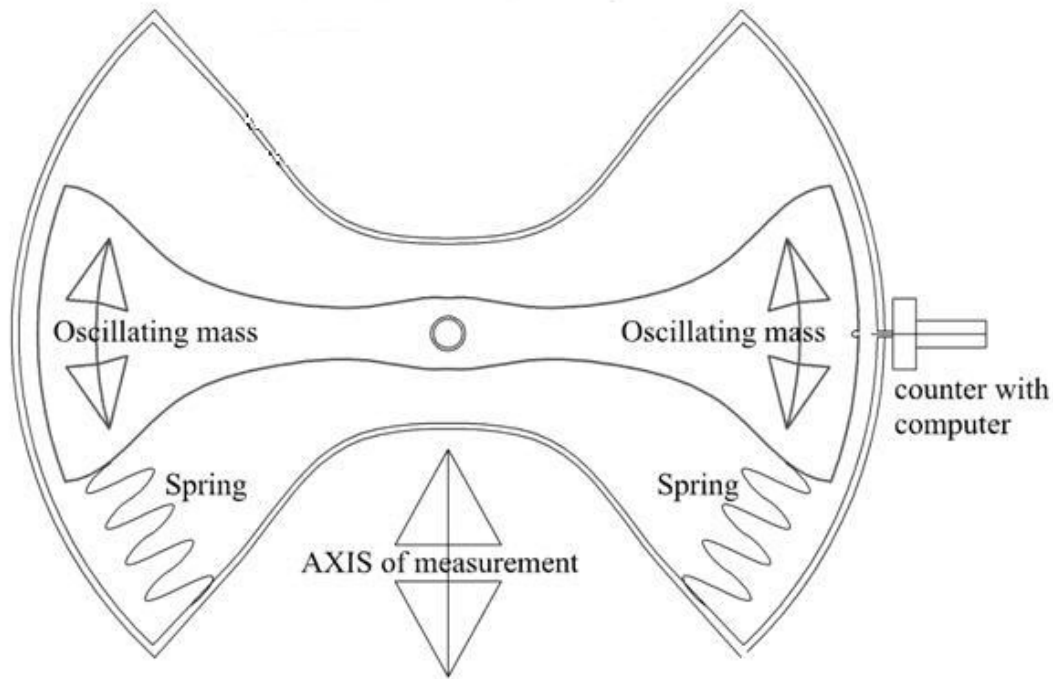


Locations inside the Earth, with extreme high mass concentration, (near Volcanos) measured by inertia pendulum experiment.

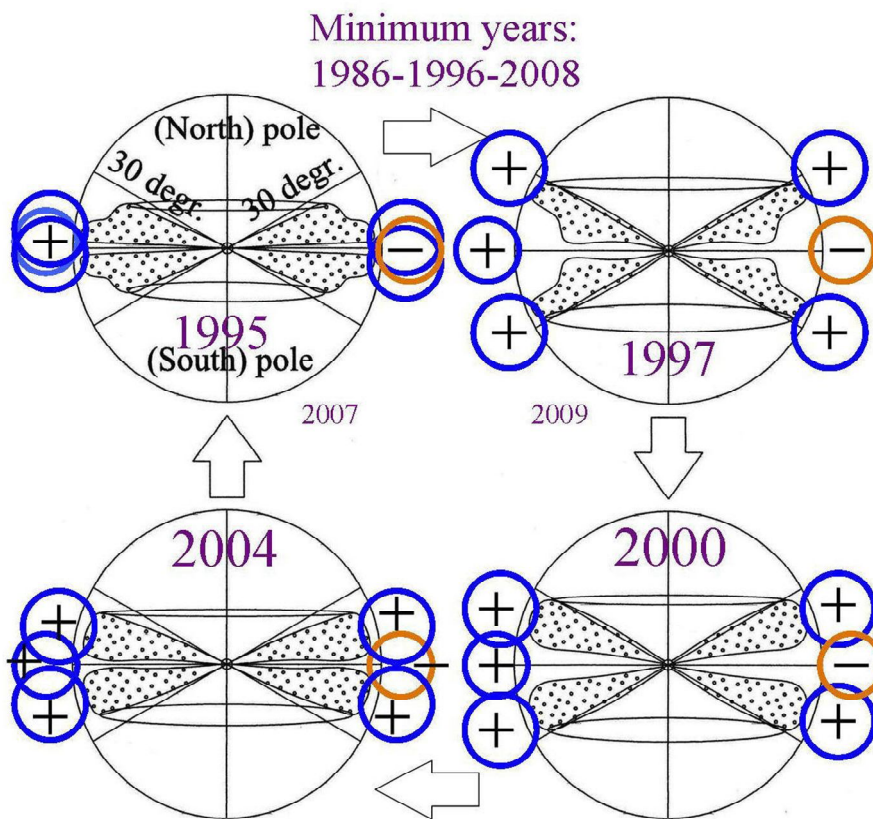
Figure 9,

The “Double Vector Hedgehog” related to mass concentrations in the earth.

Oscillation directions: A,B,C and D will give larger damping differences as expected by Newtonian gravity rules, if we use a new Inertia oscillator device, presented in figure (10).



**Figure 10,** Cross section through the inertia oscillator for the search of mass concentrations inside the near earth and as a test for double Le Sage gravity.



**Figure 11,** Cross section through the sun with the sunspot (micro black hole) distribution in two mirror symmetrical double cones, changing shape with the 11 year sunspot cycle. The gravity influence of the double cones together with the solar rotation (blue and yellow ring area) is supposed to be the origin of Solar eclipse gravity variation of the measurements.

Well documented solar eclipse gravity variation measurements are made by different scientists in the past years. After years of measurement, it seems to be impossible to find a scientific base for the different results.

However if we assume that Sunspots are micro black holes, (**Ref. 2**) able to drag and influence the Higgs vacuum pressure distribution around the sun, then we may have a clue.

We assume that the sunspot distribution has a double cone shape inside the sun, as depicted in figure 11.

### ALTERNATIVE MAGNETIC FIELD INTERPRETATION.

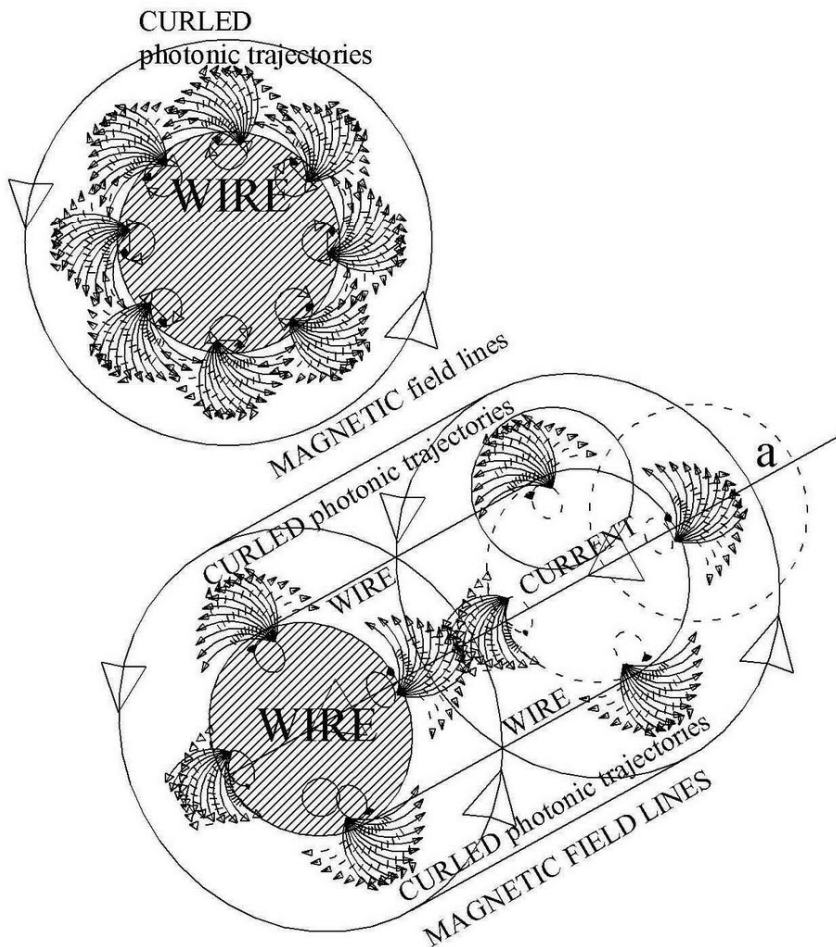
If magnetic field lines have a quantum mechanical origin, based on alternative magnetic monopole photons (with a North or South characteristic and a slight "photonic trajectory CURL") then the picture below could represent the origin of a "Magnetic vector potential (A)" around an electric current e.g. in a wire.

This magnetic CURL is supposed to have the same origin as assumed for the DIFFRACTION process (of light): "Settlement" of photonic information routing inside the local microscopic Higgs vacuum lattice.

It is assumed that the photonic CURL in the photonic vector field will change due to wire bending.

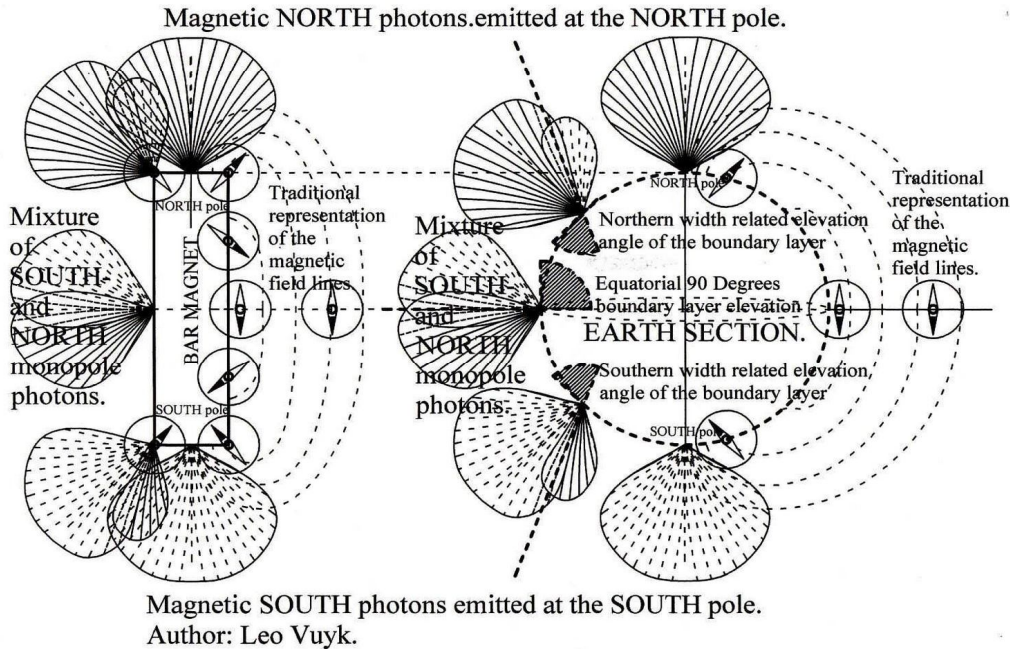
The Curl will be able to decrease down to zero curl, at the outside turn of a bended wire, (e.g. see position: a) If this is the case, the magnetic field (called the B field) will vanish completely around a long small solenoid. Inside a wire bending however, the Curl will consequently increase.

Conclusion, the proposed two force carriers (photons: North and South) are able to explain the peculiar qualities of the so called Magnetic Vector Potential field (A). (Author L.Vuyk)



**Figure 12**, Alternative magnetic field by "curled Photonic monopole information around an electric wire under current.

ALTERNATIVE magnetic field interpretation based on two different magnetic photons ( N and S) with boundary layer elevation indication. If magnetic field lines have a quantum mechanical origin, based on alternative magnetic monopole photons (with a North or South characteristic and a slight "CURL") then the picture below represents the differences with the traditional view.



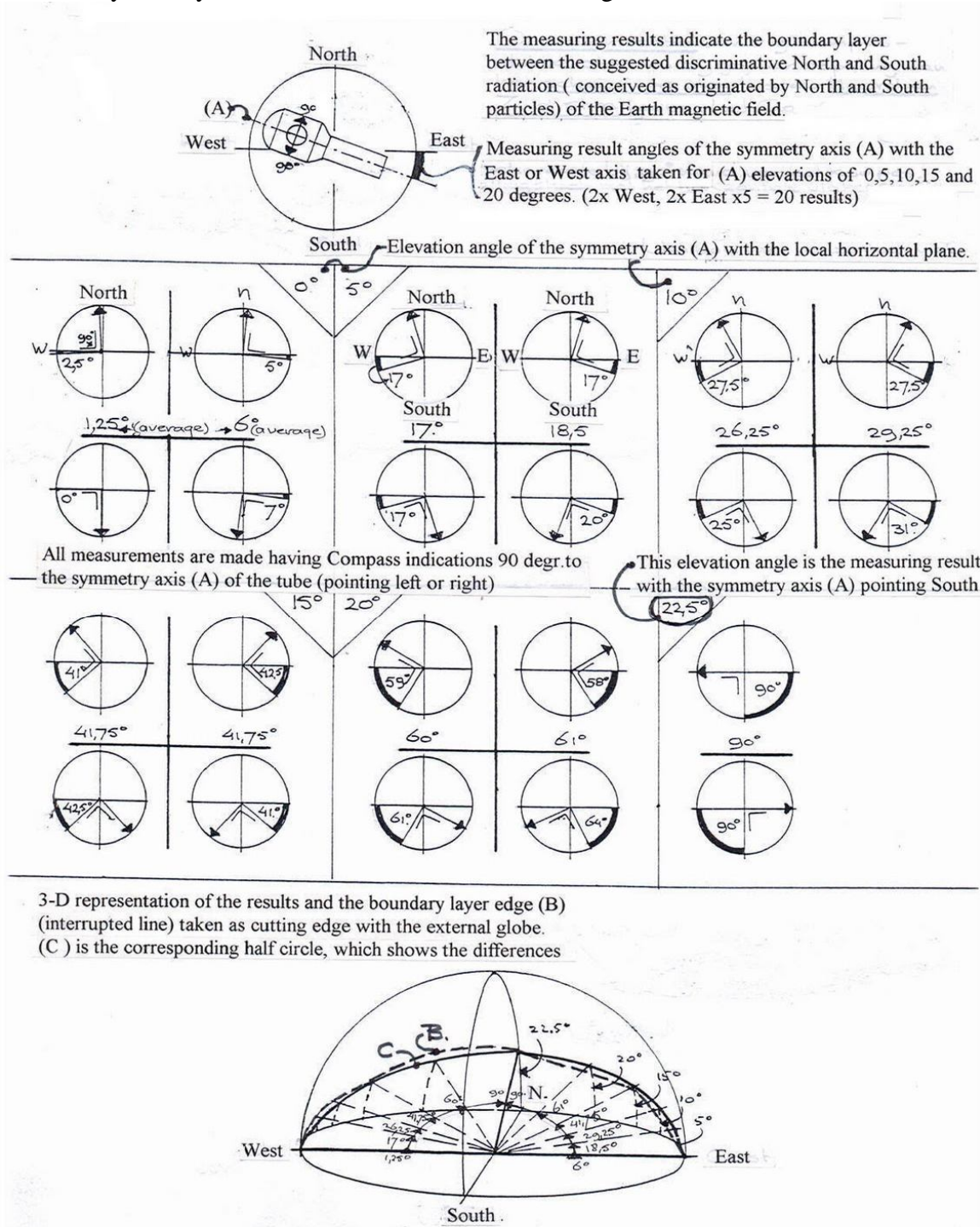
**Figure 13,** Alternative magnetic field interpretation , based on two different magnetic Photon/Gluons ( North and South) with different boundary Layer elevation indications.

Magnetic monopole telescope, able to show differences in the monopole Photon trajectories (with North or South characteristic) of the earth

The screening tube is made of permalloy or mu-metal. The compass is a simple hobby compass balancing on copper bolts by a counterweight. Angle measurement is done, only if the compass needle points into a heading perpendicular to the axial symmetry axis of the tube. This is the indication of equal numbers of North and South photons -coming through the open end of the telescope- hitting the compass needle.

**Figure 14,** magnetic monopole telescope, able to show differences in the monopole Photon trajectories (with North or South characteristic) around the earth.

The screening tube with back shielding, is made of permalloy or mu-metal. The compass is a simple hobby compass balancing on copper bolts. Angle measurement is done, only if the compass needle points into a heading perpendicular to the axial symmetry axis of the tube. See the result on figure 15.

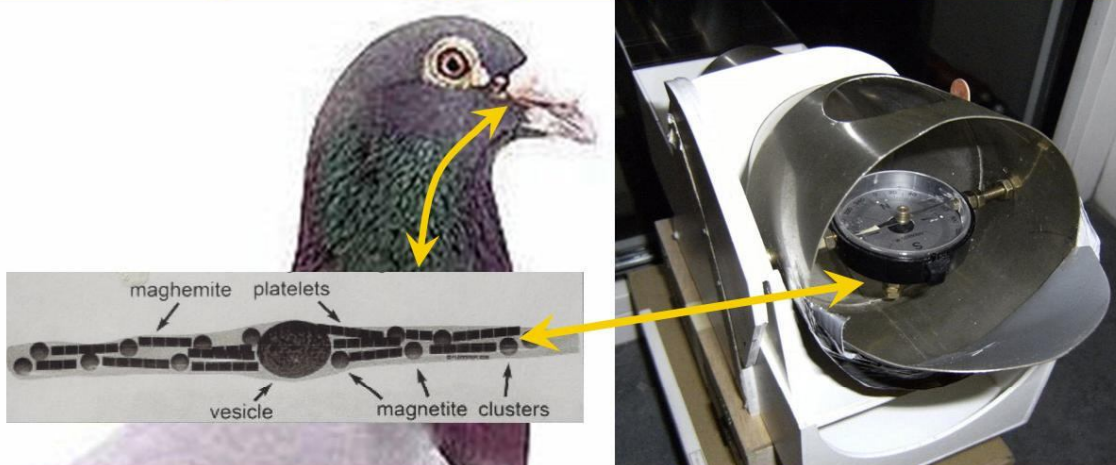


**Figure 15,**  
3-Dimensional representation of the “boundary layer” B, between the North and South monopole radiation of the earth, is the result of multiple measurements by the magnetic telescope at location, Latitude: 52,18 degr. North and Longitude degr. 5,2 East.(see: figure 14).

It is assumed that every location on earth has its individual **boundary layer Curve B.**

It is also assumed that **animals like Pigeons and sea Turtles are able to identify these specific curves (B) for different locations by the small amount of permalloy alike metals already found in their bodies, to explain the extraordinary qualities of animal orientation.**

## Magneto monopole boundary shape telescope with magnetic fingerprint positioning.



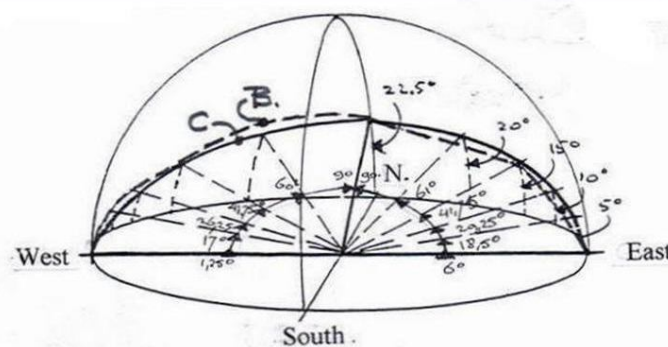
Pigeons like other birds, Butterflies and Turtles seem to be able to navigate solely on the Earth magnetic field. According to **Quantum FFF theory**, magnetic fields are just like electric fields based on monopole photonic information vector fields.

There are photon vector fields for electric negative and positive charge and for magnetic North and South potential.

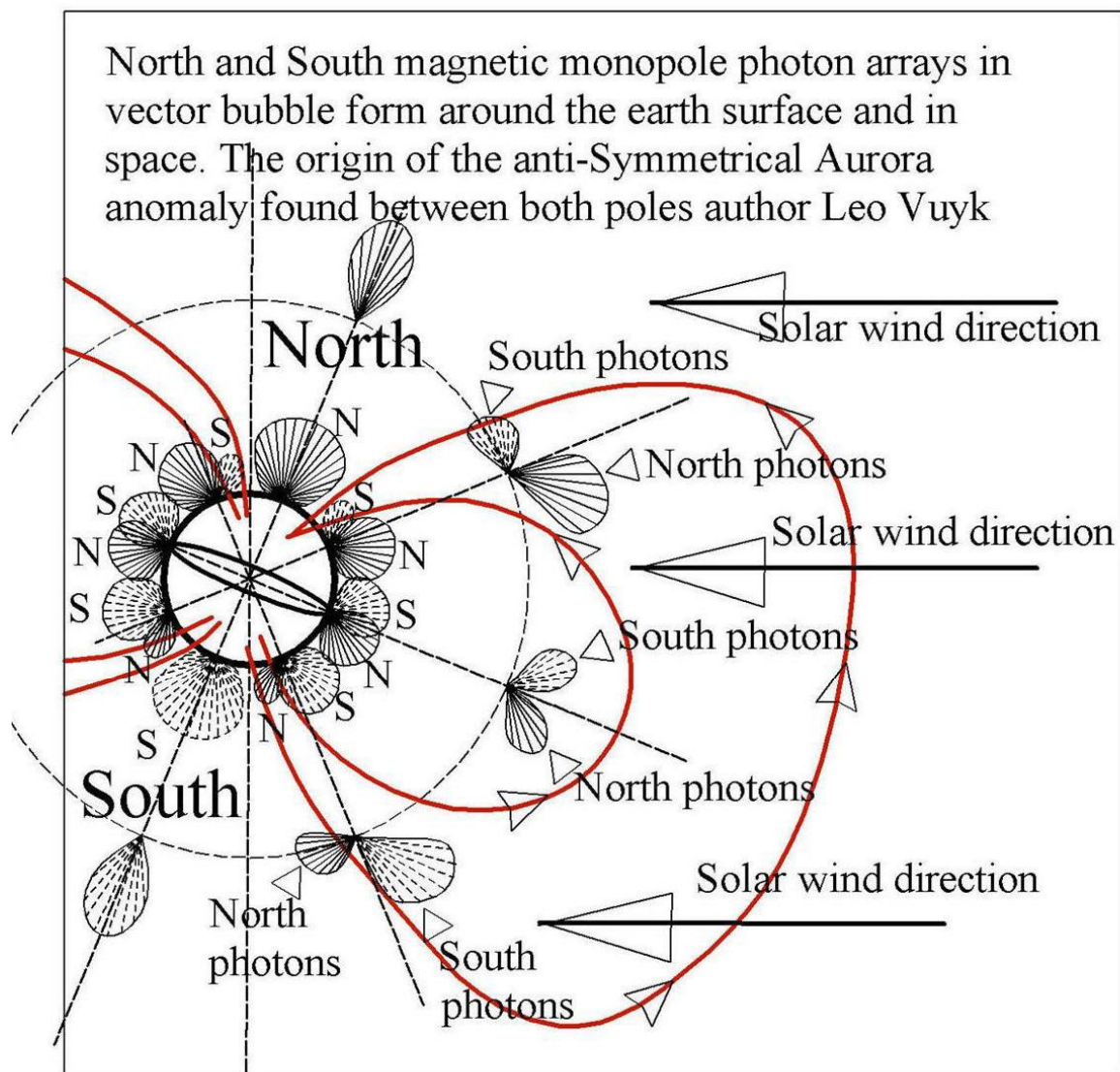
( See second image of vector fields around the earth)

The boundary telescope (depicted above) is able to determine a so called fingerprint in the form of the **half circle boundary shape** of the two magnetic vector fields (North and South) at each location on earth. (see below).

The specific curvature of the **half circle shaped boundary line (B)** is the fingerprint observed to be unique for each location on earth..



**Figure: 16, Each location on earth could have its own magnetic monopole based “fingerprint” as the origin of animal navigation like Pigeons Butterflies and Turtles.**



Section through the earth with magnetic monopole photon arrays in vector form. The Magnetic curl effect in space is influencing the vector bubble directions and shapes. Date 12-01-2012.

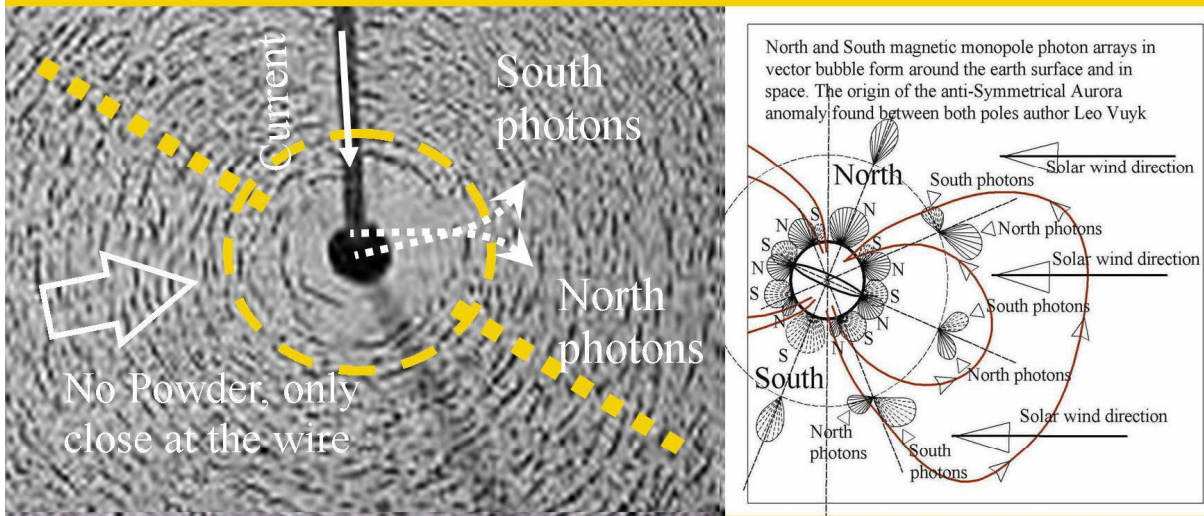
Figure 17, North and South monopole photon vector arrays around the earth. The North photon angle of attack and concentration on the Solar wind charged particles is assumed to be the origin of the recently found anti-symmetry of aurora effects in the summer.

Polar Auroras do occur at the same time in northern and southern polar regions at locations connected by geomagnetic field lines, a connection that might be expected to link patterns, positions and timing of the two aurora.

However this is found to be not the case!!

**See: Asymmetric auroral intensities in the Earth's Northern and Southern hemispheres**  
K. M. Laundal & N. Østgaard. doi:10.1038/nature08154.

## Magnetic field variations by the “Curl” of Magnetic Monopole (N and South) Radiation around a wire and the earth.

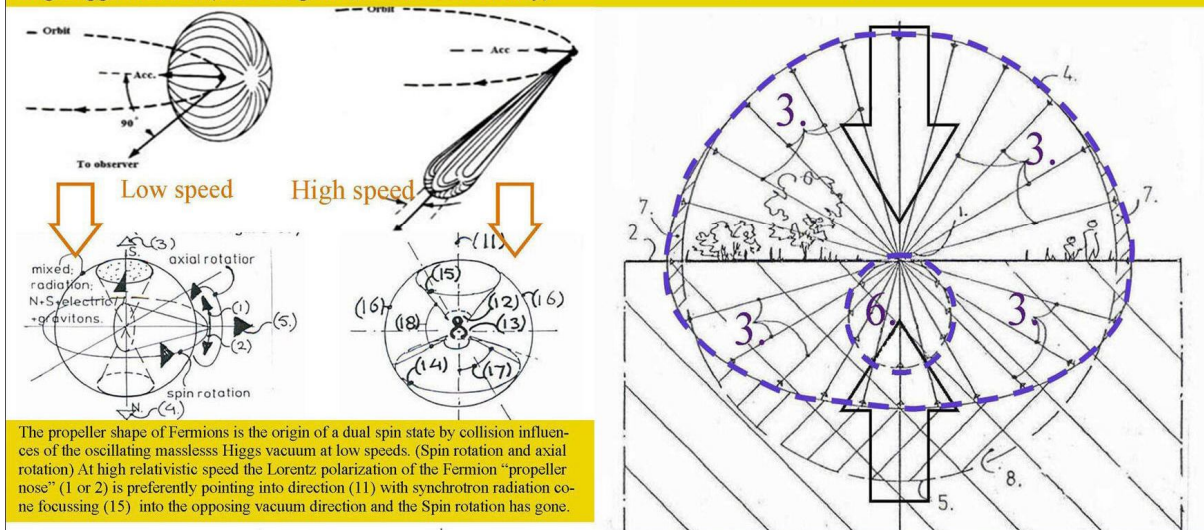


According to Quantum FFF theory, all magnetic fields can be presented as DUAL Magnetic Monopole Photon Vector Arrays. These monopole arrays undergo curvature. As a result, the magnetic field intensity around a the Earth and a wire is NOT dropping off with the square of the distance from the source!! The field become stronger polarized away from the source (See images). Close to the current transporting wire the magnetic field strength is zero due to the parallel trajectories of North an South Photons before curvation and polarisation of iron powder ( Author: Leo Vuyk)

**Figure 18, The so called CURL of the magnetic vector arrays around the earth, permanent magnets and around current bearing wires, is the origin of a strange anomalous less pronounced drop of the field strength related to the source.**

Synchrotron radiation by Polarized Fermion spin combined with high speed motion through the resistive oscillating Higgs vacuum (according to Quantum FFF theory)

Quantum Gravity as pressure distribution of the oscillating dual Higgs/Graviton vector field.



**Figure 19, Examples of how the double spinning Fermions are reacting on the oscillating massless dark matter Higgs vacuum in the case of relative speed and gravity.**



Production hypothesis for Quantum Knot Ball Lightning by Interference, Micro Comets and Dark Lightning, based on Photos and Langmuir fireball videos and Quantum FFF Theory 01-09-2013.

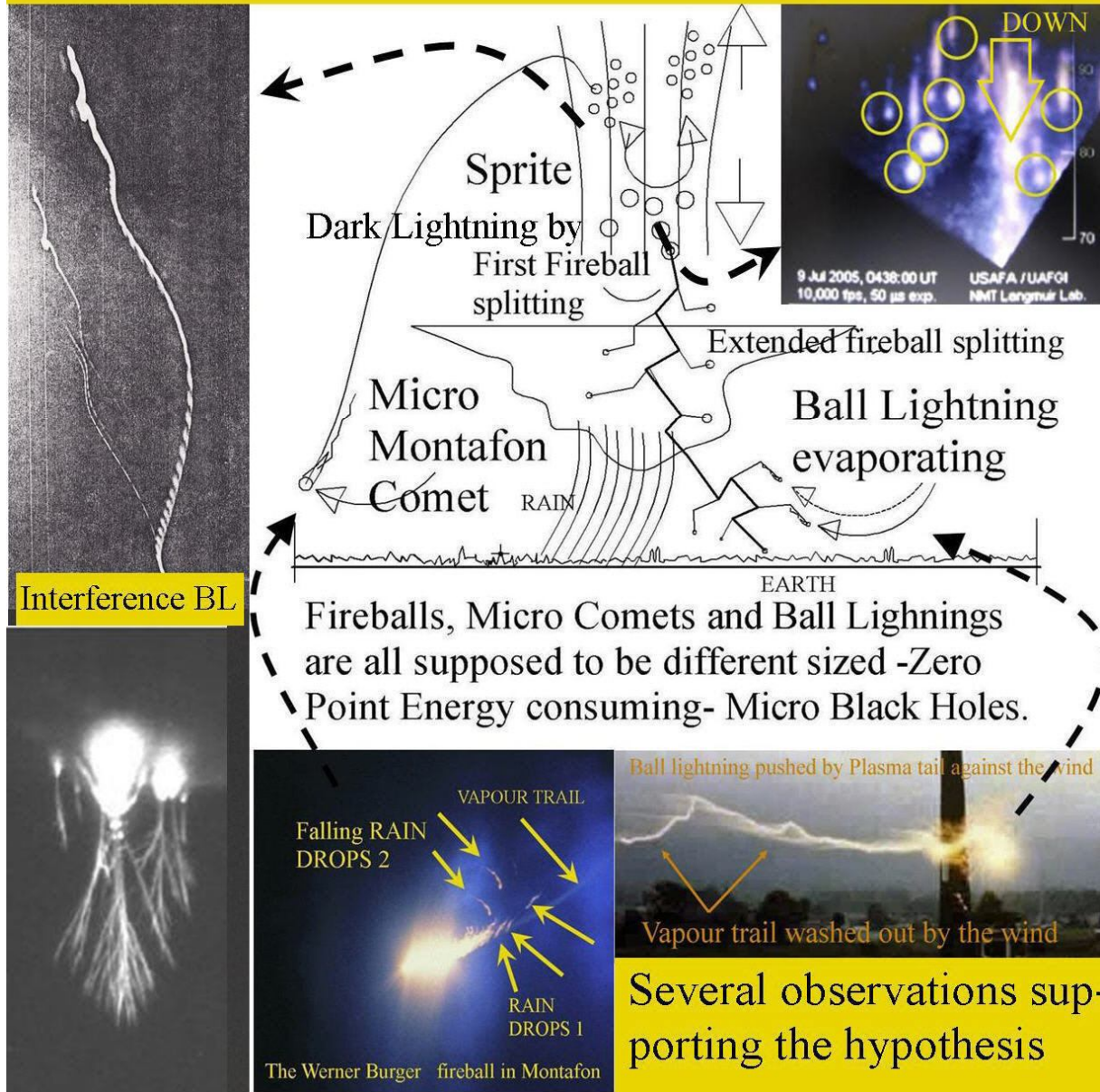


Figure: 20, Quantum Knot production by monopole photon interference for Ball lightning, Micro Comets (Montapfon) and Sprites

Quantum Knot based Micro Black Holes (Ball Lightning), produced by Photon interference in air and in Silicon globules according to Quantum FFF Theory.

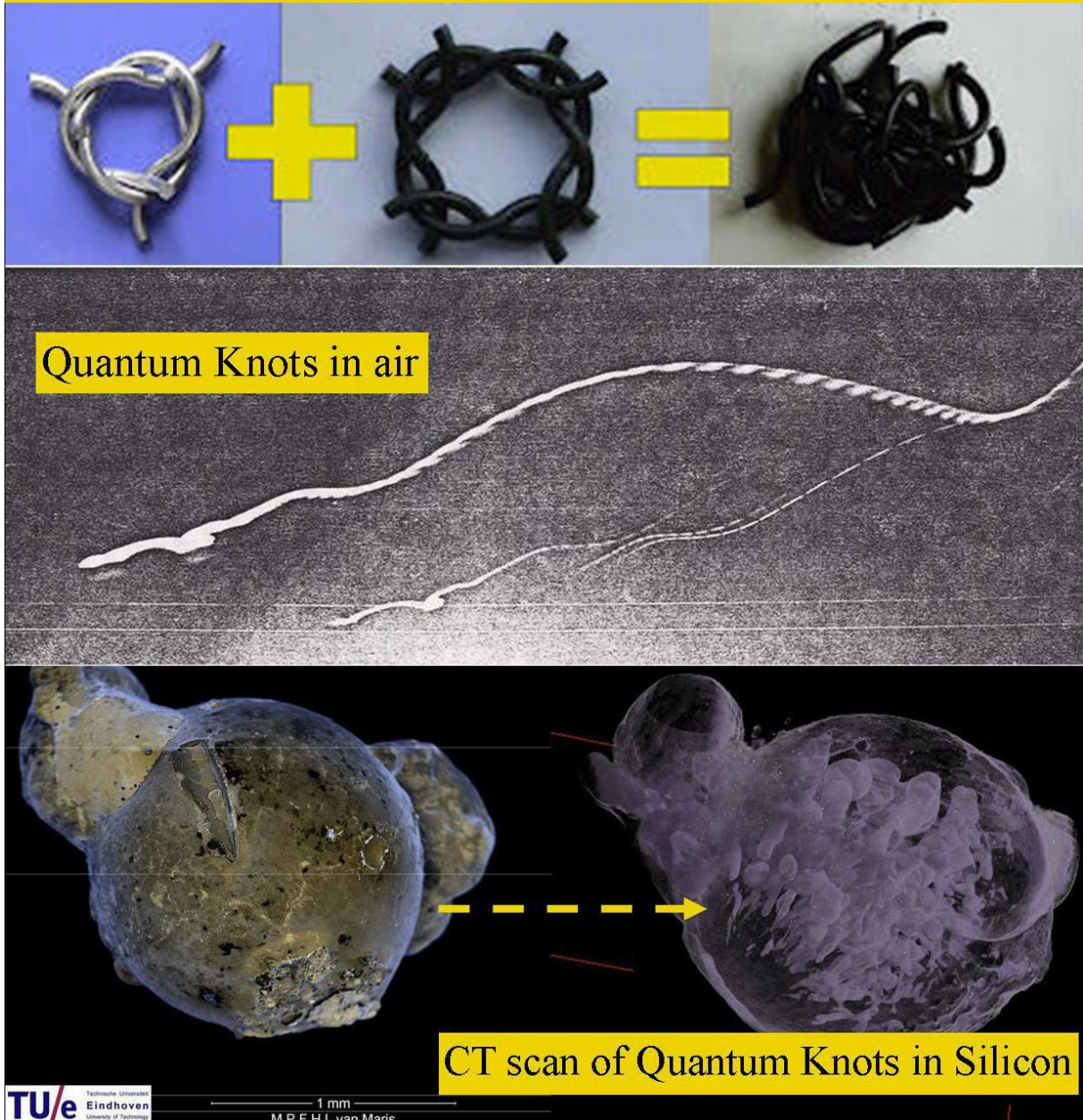
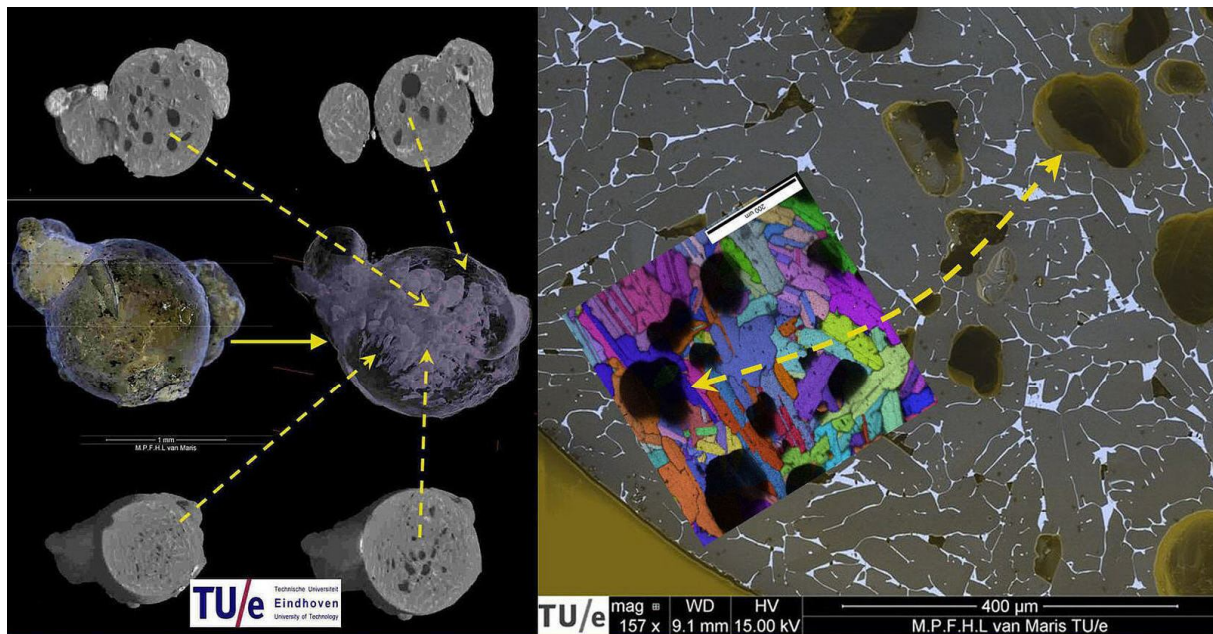


Figure: 21, Quantum Knot production for Ball Lightning and channelling inside Silicon Globules produced by High current discharge through silicon wafers.



Left: internal Silicon globule structure made by CT nano scan at the University of Eindhoven (NL) Internal hollow channels are observed. According to Quantum FFF theory these channels are postulated to be left behind by traveling and evaporating “Quantum Knots”. Right: Details of the internal structure of the silicon globule, with two different measurements: by SEM imaging (grey color) and EBSD imaging (colored inset) also by TU Eindhoven.

**Figure: 22, Nano scans of the internal structure of a silicon globule. ( scan by: TU Eindhoven)**

**QUANTUM-FFF THEORY elements deviating from the Standard Model by a:**

A: NEW DARK MATTER BLACK HOLE, (Non oscillating Higgs particle Knot as NUCLEUS of the Black Hole)

B: NEW DARK ENERGY HIGGS (with 126 GeV OSCILLATING energy and Spacetime universal- and Local Time),

C: NEW BIG BANG PARADIGM (with symmetrical entangled raspberry shaped cyclic multiverse).

D: NEW SYMMETRIC WAVEFUNCTION COLLAPSE (only by symmetric entanglement between NEIGHBOURING supersymmetric anti copy universes down to the quantum level. The so called "cosmological Multiverse SEPARATED by space(time)" in contrast with the Quantum Multiverse not separated by spacetime.

E: NEW HUMAN CONSCIOUSNESS (is based on the a comparable but retarded (B.Libet: 400 m.sec) collapse principle).

F: NEW STANDARD MODEL (has to be extended with propeller shaped Fermions).

G: The VARIABLE LIGHTSPEED is dragged around massive objects. So a bouncing radar pulse from Venus onto Earth will show anomalies.

H: NEW HUBBLE REDSHIFT is originated by transformation (lattice dilution) of the vacuum by Dark Matter black hole proliferation through the universe.

J: NEW QUANTUM GRAVITY and EM forces, based on opposing/combined Casimir, Higgs/Graviton/monopole photons and new Feynman diagrams)

### **DESCRIPTION MORE IN DETAIL:**

A: That a "black hole" create and repel propeller shaped Fermions and photons at its horizon, it has a Higgs knotty nucleus but no mass -because it does not emit gravitons-, and is the origin of all "dark matter" in the universe. The BH is supposed to exist at all scales from Quantum Knots (or Ball lightning) up to Comets, Sunspots, external Stellar- and Galaxy Anchor Black Holes, up to the Big Crunch- or Big Bang Black Hole.

B: That "dark energy" is based on microscopic massless vacuum (non SM) Higgs particles, energetic oscillating in opposing pairs along a chiral but tetrahedron shaped vacuum lattice and able to convert (NOT DECAY) into pairs of electrons and positrons, e.g. at the horizon of black holes. The Higgs is supposed to be singular 3D-stringy particle able to convert by mutual collision into a different shape of an electron, positron photon or neutrinos. A Muon Tau or Quark, are supposed to be compound particles, based on composition of electron or positron propellers with photons/gluons.

That the 126 GeV mass of the Higgs particle (found by the LHC in Geneva) could be translated into 126 GeV energy of the paired vacuum particles and is supposed to be the origin of spacetime and so called Dark Energy. Conclusion, the LHC found a first sign of Dark Energy!!

C: That as a result, the Universe is cyclic, super symmetric and has the form of a raspberry shaped pulsating symmetric Multiverse with finite cycle time.

D: That all matter and humans have their instant entangled copy symmetric counterpart living inside the opposing super symmetric lobes of the raspberry multiverse. which is supposed to be the base for ALL WAVEFUNCTION COLLAPSES HERE on earth AND CONSCIOUSNESS.

E: That Humans and higher animals have the ability to influence conscious acts by a small retardation or lagging effect (300 m.sec) in decision making. This lagging effect phenomenon is already found and described for humans by Benjamin Libet, called RPI and RPII (Readiness Potential 1 and 2) see: <http://vixra.org/abs/1103.0015> called "Wavefunction Collapse and Human Choice-Making Inside an Entangled Mirror Symmetrical Multiverse."

F: That the STANDARD MODEL has to be extended with electric and magnetic monopole photons/gluons and Elementary particles are interpreted as real 3-Dimensional entities with complex convertible shapes, able to form compound quarks and two Leptons (the Muon and Tau).

G: The LIGHTSPEED is dragged around massive objects. So a bouncing radar pulse from Venus onto Earth will show anomalies. The orbital speed of Venus and the Earth will originate this anomaly. (By a ellipsoidal shaped LASOF around the earth: LOCAL ANTI-SYMMETRIC OSCILLATING vacuum FRAME)

## **QUANTUM FFF THEORY**

**According to Quantum FFF Theory, the FORM and MICROSTRUCTURE of elementary particles, is supposed to be the origin of FUNCTIONAL differences between Higgs- Graviton- Photon- and Fermion particles. As a result, a NEW paradigm of splitting-, accelerating- and pairing Black Hole seems to be able to accelerate itself by a - Zero Point Energy driven-self created plasma tails ( by a new Quantum Fluctuation process), to form dumbbell systems, of two or even more black holes. Inside Nebula these dumbbell systems are called Herbig Haro systems.**

**Inside the early universe however these systems are observed as dumbbell shaped radio lobes at both sides of early galaxies (Faint B3 radio galaxies). Recent cosmic observations of the infra red and x-ray background radiation of the universe by Chandra and Spitzer space telescopes (CIB and CXB), suggest that even direct after the big bang ABUNDANT black holes already existed.**

**This can be interpreted as a support for a Black Hole splitting Big Bang and a Black Hole pairing Big Crunch before, thus there is reason to propose a cyclic Universe.**

**In Quantum FFF theory, the chirality of the universal vacuum lattice is proposed to be the origin of negative- or positive charged black holes and the origin of the formation of matter over anti-matter around negative charged black holes as in our universe seems to be the case.**

**The chirality of the oscillating Higgs vacuum is supposed to be the origin of preferred Positron attachment with three different shaped monopole Gluon/photons for easy Quark formation without a lot of particle annihilation back into the Higgs vacuum. Quantum FFF Theory states that all quarks and two leptons (muon and Tau) are composed out of electrons or positrons as a base with one or two photons/Gluons as "click-on" elements and "click out" and transform on decay processes . So Quark compositeness is needed to be in line with the color charges of QCD model.**

**At the same time, the possibility of a chiral universal vacuum is reason to support the idea of a super symmetric raspberry shaped multiverse, with a limited number of dual CP(T) symmetric (anti) copy universes, instant entangled down to all quantum systems.**

**The Quantum FFF model seems to be a unique description of reality including multiuniversal wavefunction collapse and human consciousness. As a consequence it can be qualified as a proposal for the theory of everything.**

## References:

[1] [viXra:1103.0015](#)

**Wavefunction Collapse and Human Choice-Making Inside an Entangled Mirror Symmetrical Multiverse.**

Category: [High Energy Particle Physics](#)

[2] [viXra:1103.0011](#)

**An Alternative Black Hole, Provided with Entropy Decrease and Plasma Creation.**

Category: [High Energy Particle Physics](#)

[3] [viXra:1103.0002](#) **3-Dimensional String Based Alternative Particle Model.**

Category: [High Energy Particle Physics](#)

[4] [viXra:1102.0052](#)

**Construction Principles for Chiral "atoms of Spacetime Geometry".**

Category: [Quantum Physics](#)

[5] [viXra:1102.0054](#)

**Atomic Nuclear Geometry Based on Magic Number Logic..**

Category: [Nuclear and Atomic Physics](#)

[6] [viXra:1102.0056](#)

**Experiments to Determine the Mass Related Lightspeed Extinction Volume Around the Earth and Around Spinning Objects in the Lab.**

Category: [Relativity and Cosmology](#)

[7] **The New God Particle and Free Will.**

By Leo Vuyk, LuLu publishers, 2008.

ISBN number 978-1-4092-1031-3