

What connects the expulsion from paradise with mathematics and physics: From the tree of knowledge and the farewell to the world formula

Manfred U. E. Pohl*

23.07.2023

Essay

The flawed foundation of contemporary "science" has been revealed¹: the circle number π does not represent an irrational "number", but the rational ratio 1 circumference / 1 diameter = 1 circle, and thus the physical "unity" of the inseparability and duality of time and space:

$$\pi = 1 \text{ revolution (rotational speed)} = 1 \text{ second} / 1 \text{ meter.}$$

This is surprisingly simple and surprisingly short once you understand it. One only has to look through the thicket of human history and one's own upbringing and recognize and accept it. But that's how it should be – at least that's how Stephen Hawking outlined it during his lifetime:

„If we do discover a complete theory, it should in time be understandable in broad principle by everyone, not just a few scientists. Then we shall all, philosophers, scientists, and just ordinary people, be able to take part in the discussion of the question of why it is that we and the universe exist. If we find the answer to that, it would be the ultimate triumph of human reason — for then we would know the mind of God.“

Stephen Hawking

To which it should be said that the world formula essentially provides the statement and proof that there is no world formula (in the physical sense) and that it is precisely the "inadmissible" search for such a world formula in the field of physics and mathematics that describes the fall of man: the "forbidden" by God reaching for the fruit from the tree of knowledge. In short, the universal formula proves that there is the tree of knowledge and that people have become accustomed to eating the forbidden fruit: man's socially institutionalized striving for knowledge, to be able to distinguish between good and evil.

* Correspondence: Manfred U. E. Pohl, Independent Researcher, Germany, email: mue@villa2060.org

¹ Pohl M.U.E (2022): Search for the World Formula, Scientific God Journal Vol 13 No1, <https://scigod.com/index.php/sgj/article/view/781>



Johann Wenzel Peter: Adam und Eva im Garten Eden, ca. 1800

The circle reflects the basic structure, the foundation of that part of our perception that we consider to be consciousness. You could also say that the circle symbolizes our "thinking". It has no beginning and no end, embodying both infinity (eternity) and nothingness. In "numerical" science, we can only "measure" by comparison. We can only become aware of movement by imagining space and time. A movement takes place when "something" "moves" through a certain space in a certain time.

What is contemporary science doing wrong? It defines "time" as something measurable that exists and could be measurable without space. The foundation of today's science rests on the definition and basic assumption that time can exist and be measurable without space. Thus, it is defined that time is measurable with clocks and one second is measurable by a property of the caesium-133 atom, i.e. with an atomic "clock". However, the "world formula" shows that this is exactly the "mistake" within our science edifice, because the unit of "time" cannot be measurable on its own. But Albert Einstein already showed that. It's just that science hasn't really followed him bravely enough. Although space and time are "metrologically" inextricably linked – we know this from empirical evidence – we continue to define time without a connection to space. At the same time, we define that time is independent of space, but claim that space is dependent on time. This is irrational. As irrational as the assumption that the circle number π is an irrational dimensionless number.

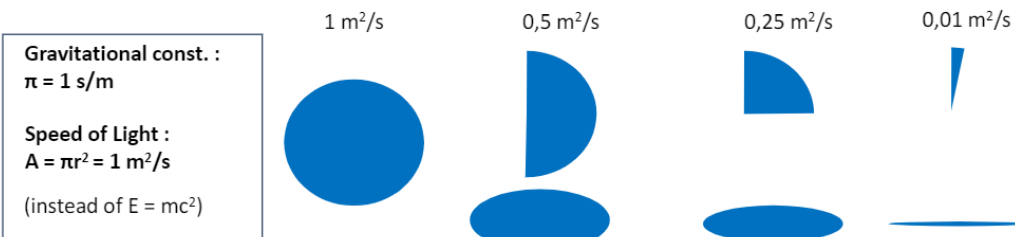
How could it happen that "science" today is so fundamentally mistaken, so irrationally "thinks", and why has no one yet come across this "simple" mistake or made attempts to correct it. The strongest argument for somehow perceiving the error (acknowledging that today's science edifice has errors and is not the ultimate truth) but ignoring it (remaining inactive) is the basic assumption that 8 billion people could not be wrong: a cognitive dissonance. The thought that 8 billion people are fundamentally wrong and on the wrong track gives the thinker a very unpleasant feeling, so that it seems more sensible to the thinker to live with the mistake than to doubt the "truth" of the 8 billion other people.

In addition, one would have to be able to solve and explain the mystery of the speed of light, curved space-time, the incompatibility of quantum theory with general relativity and wave-particle duality in passing. That seems hopeless – that's what anyone who doesn't have at least one Nobel Prize in physics thinks.

But it's not that hard. A little geometry is needed – already known in ancient Egypt:

Definition of Spacetime – Speed of Light defined by Gravitation

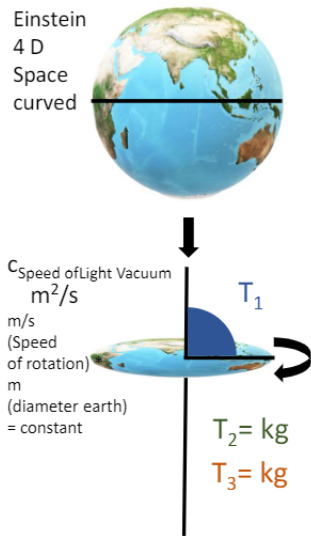
Speed of Light IS Spacetime (Time defined by Speed of Light instead of Caesium-133): „Numbers must be used related to a physical dimension. There are only two physical dimensions in mathematics / geometry: „length“ \overline{AB} (unit Meter) and „angle“ $\angle ABC$ (unit seconds), that corresponds to the physical units of Space and time. To „define“ a unit of Space-time, a unit Squaremeter of space, one needs to specify the squaremeter in respect to a 90° angle. We consider $\pi = 1$ Circumference / 1 Diameter = 1 Second / 1 Meter as origin of the interdependency of space and time.



The speed of light is given therefore in the units m²/s and represents the universal ruler for spacetime [0...1]. The gravitation represents the acceleration between two points and is measured in m/s². Considering Observer and Observed $\text{m}^2/\text{s} * \text{m}^2/\text{s} = \text{m}^3 * \text{m}/\text{s}^2$ 3-D space is grounded on the concepts of Gravitation (Gravitational Constant $\pi = \text{Second} / \text{meter}$) and Speed of Light ($A = \pi r^2$).

So the speed of light is only a representation of the "measuring instrument" with which we measure time and space. Originally (with the French National Convention of 1793) we determined the circumference of the earth (40000 km) and the rotation of the earth (1 day = 86400 seconds). So the speed of light is merely the Earth's rotation ? Of course:

Experimental proof: Speed of light is represented by rotation of earth



As the definition of second was made original based on rotation of earth around own axis and the meter was defined original based on the circumference of earth, the speed of light represents the earth Diameter (meter) and the earth rotational speed (Second)

Speed of Light in m²/s

$$= \text{Diameter of earth}^2 / (2 \pi \cdot \text{Day of earth})$$

$$= (12756274 \text{ Meter})^2 / (2 \pi \cdot 24 \cdot 60 \cdot 60 \text{ Seconds})$$

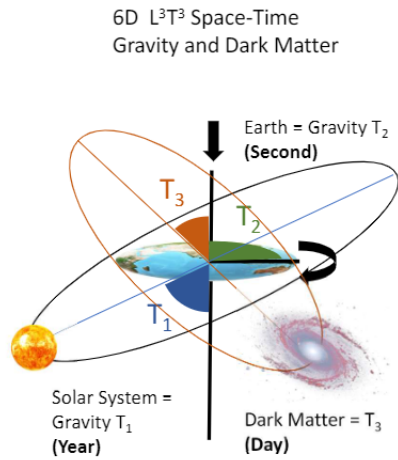
$$= 299746463 \text{ Meter}^2/\text{s} \text{ (WGS 84 Equator)}$$

Error calculation:

$$\frac{c_{WGS84}}{c_{Codata}} \cdot \frac{\text{radius}_{WGS84}}{\text{radius}_{Bessel}} = \frac{299746463 \frac{\text{m}}{\text{s}} \cdot 6378137 \text{m}}{299792458 \frac{\text{m}}{\text{s}} \cdot 6377397 \text{m}}$$

$$= 3,74 \cdot 10^{-5} \text{ error}$$

The error is near the uncertainty of the gravitational constant G [kg⁻¹ m³/s²] with 2,2 · 10⁻⁵.



Anyone could have guessed that the circle number must be the only natural constant in physics. Of course, it is also found in the foundation of electrodynamics with (speed of light, magnetic field constant of the vacuum and electric field constant of the vacuum) the connection that includes gravity ($c^2 \mu_0 \epsilon_0 = 1 \pi$).

From Maxwell's equations (electrodynamics) follows the relationship between the speed of light and the field constants of electrodynamics:

$$\mu_0 = \frac{1}{\epsilon_0 c^2}$$

$$4\pi \frac{kg_1 m}{10^7 A^2 s^2} = \frac{s^2 kg_2 m^3}{8,8541878128 \cdot 10^{-12} \cdot 299\,792\,458^2 m^2 A^2 s^4}$$

$$\pi \cdot kg_1 = \frac{10^7 kg_2}{4 \cdot 8,8541878128 \cdot 10^{-12} \cdot 299\,792\,458^2}$$

$$\pi \cdot kg_1 = 3,141592655 kg_2$$

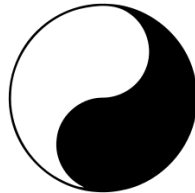
$$kg_1 = kg_2$$

(Gravity between masses = concept of constant speed of light)

The trick is then not to square the numerical value (299792458) of the speed of light, as the formula (c²) requires from a purely mathematical point of view, but to take into account that the natural constant 299792458 is given in the unit m/s and must not be squared. So only the physical unit is squared here (m²/s²). So if you calculate "alternatively" you get:

$$kg_1 = 299792458,2 kg_2$$

The "origin" of the "mysterious" constant speed of light. Here Einstein made a mistake in the hypothesis about the nature of light. The mental conclusion dictated by this "empirically" proven property of reality is that it is not possible to issue a mathematical model (a world "formula") of reality using numbers. It always remains with the duality of the relationship "God – I", or "The Observer – The Observed". Seen in this light, the empirical evidence from the experiments on quantum theory is ultimately "proof" that God exists and plays an active role.



$$kg_1 = kg_2; \text{ Meter} = \text{Sekunde}; \text{ Adam} = \text{Eva}$$

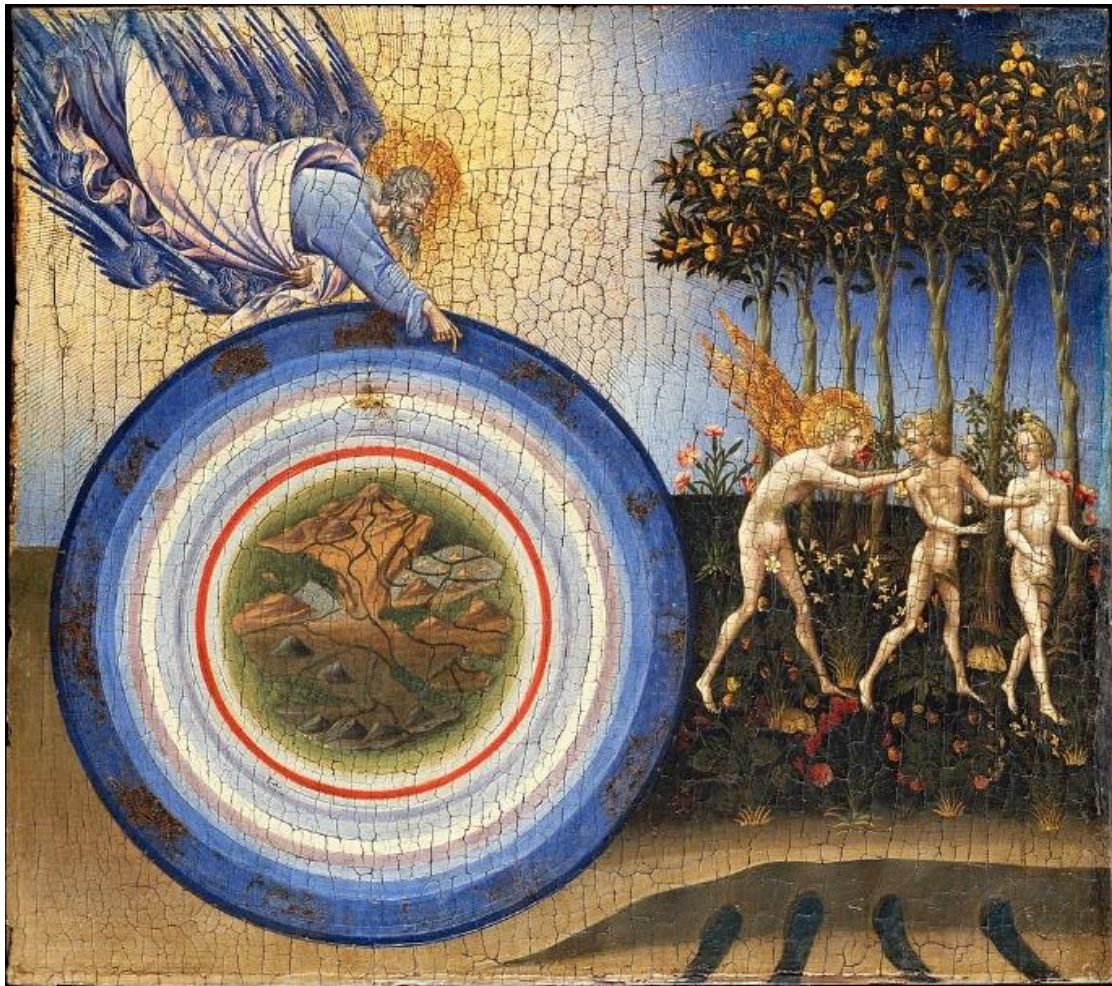
When and where did the wrong path begin? From today's point of view, "science" seems to have strayed from the "scientific" path even before the emergence of the Abrahamic (monotheistic) religions. Judaism, with a history of about 3000 years, could most likely go back to this period and outline that the path from this principle of equality between Adam and Eve (not polytheism) via a bridge of henotheism (beginning of Judaism and Hinduism) to monotheism with the theme of placing the tree of knowledge as an all-encompassing (monotheistic) object of human desire and striving, misled.

A "model" of reality, a "world formula", can only be made by Adam or Eve of himself. However, the counterpart can never be included in it, so that the "science" or the "thought structure" of contemporary science, which reflects monotheism as a religion, is ultimately always limited to this egocentric approach. The idea of providing an all-encompassing "central" worldview for "humanity" is bound to fail.

In his book "Physics, A science in quest of an Onology", the physicist Dr. Wolfgang Smith gives a good insight into the connections between physics, mathematics and a worldview that is fundamentally opposed to today's worldview.²

One could assume the loss of knowledge about the "world formula", from today's point of view – i.e. with knowledge of the world formula (the circle or the "world formula"). π as the only constant of nature) – can also be interpreted as an expulsion from paradise.

² Platonic Physics: In Dialogue with Wolfgang Smith : https://www.youtube.com/watch?v=V_ZWBkSNMFg



Vertreibung aus dem Paradies, Giovanni di Paolo (1445)

What, then, is the seduction behind the expulsion from paradise in detail? If we recognize that "time" stands on the one hand for the principle of cause and effect and thus for the interaction between nature (God) and man and on the other hand for the principle of relativity (movement) and separate these two things, then we limit the area of mathematically formally describable perception to the earthly level and respect that the causal level, i.e. the real drive of the universe, cannot be described with formulas, numbers and physical units, but exists. This is exactly what man has deviated from when he defined "time" as a physical unit in order to explore the essence, i.e. the laws of nature (God), which, however, must remain closed to him on principle. In other words, by embarking on a search for a mathematically describable reality, man takes the forbidden fruit from the tree of knowledge. The world formula, on the other hand, says: There can be no such world formula.

Adam can only model a logical view of himself, and Eve can also model of himself. However, a common view of the world is not accessible to man, because for Adam in "Eve" the hidden variables are in nature and for Eve in Adam are the hidden variables of nature. A common "world view", i.e. an explanation of why the other person acts the way he or she acts, is not accessible to humans. The idea of being able to "understand" the effects of one's actions on the other and nature merely reflects the egocentrism that lies hidden in this

contemporary "scientific" approach to understanding or saving the world: Adam wants to be able to understand Eve and Eve Adam in order to satisfy a desire. But neither Adam can understand nor calculate his influence on Eve, nor can mankind understand or calculate its influence on the planet. Man remains limited to behaving intelligently, i.e. bringing his thoughts and feelings into "harmony".

A common truth (unity between people) leads to peace and reconciliation, different conceptions of the truth lead to strife and war.

Speech (the language) – in the sense of spreading one or more lies – and silence (in the sense of concealing the truth) are the only two weapons present in the dispute between people, in the dispute (war) between peoples and in the dispute (war) between man and woman.

The truth is that Adam and Eve can only create (construct) or actively live a common truth as a symbiosis, and no one is able to calculate a common truth "scientifically". However, it is precisely this egocentric claim or all social striving for such a common truth in the sense of a worldwide scientific consensus among people that contemporary science (of the Western world) embodies.

But if, in truth, no one is and cannot be in possession of this truth to which the ideal of society strives, then all people (who follow this science) are in dispute and war with each other. They are unable to make peace due to the loss of a "common" truth and are forced to argue permanently and wage wars over the dispute over whose "truth" (whose worldview) is the right one.

The expulsion from the Garden of Eden can thus indeed outline its origin in the renunciation of the true faith (true science) and the turn to a misleading and false faith ("modern" science).

Today we look at the circle from an irrational perspective: We attribute to the circle number, i.e. the ratio of circumference to diameter, that it is a dimensionless number with an infinite number of decimal places: 3.14..... Figuratively speaking, we consider the circle number as an iteration to an n-corner with an infinite number of vertices. As an "approximation" to the "truth", although this iteration is in truth a "movement" away from the truth or deception, because the circle number is "1", i.e. has only one digit before the decimal point, is rational and not dimensionless.

"Controversy" causes this false "mathematics" or "science" because it lays the foundation for the "permissibility" of an infinite number of contradictory world views, truths and points of view that have only one thing in common: they are all untrue and irrational. For example, one may consider the circle as a 4-corner, another as a 20-corner, and the next as a 999999999-corner, and yet another as an "infinity-corner". What all these individual "truths" have in common is that they are untrue. So it should not be surprising that people succumb to the impression of living in a matrix, in a projection or as a hologram. On the basis of this fundamental misconception, people get the impression in different ways and in different

manifestations that the world is not "real" or that they come from another planet. Something is wrong with this planet or humanity, says the feeling – only no one can name or explain it.

Both contemporary science and religions deal figuratively with the question of how man should act in order to please God (not to sin) or how man should act in order to survive as humanity. These attempts cannot succeed, because it can already be argued whether God should serve people or whether man should serve God. The world formula allows only one interpretation: Both: Man and God (nature) live in symbiosis.

As an expression of the attempt of contemporary science to abuse the fruits of the tree of knowledge, the foundation of contemporary science, the definitions of physical units, can be seen. The seven basic units (1 second, 1 meter, 1 kilogram, 1 ampere, 1 Kelvin, 1 mole, 1 candela) (they can be figuratively called the 7 deadly sins here) are all based on the unit "second", which, however, represents the principle of causality and must not be the subject of a physical theory at all and ultimately concerns the level of reality that is not accessible to man with numbers.

The devil is literally in the details of the system of units itself, in that from the definition of the second follows the definition of the meter, and from the definition of the meter, the definition of the kilogram, and so on and so forth. This causal chain suggests that this "measurement system" can be used to infer the course of events from a single cause (time). In reality, however, there are always two possible causes. A force always corresponds to its opposing force, but the distinction between which of the two forces is the cause is not accessible to us. The "measurement system" can therefore only ever be a relation between at least two qualities (meter/second, Adam/Eve, yin/yang, good/evil) and never an independent unit of measurement.

So there is no rod of the length "1 meter" - follows from the "world formula" outlined here. To argue about which rod would have the length of one meter, who was in the "right" about the truth, would lead people into an endless quarrel among themselves, which could never be resolved and would lead to an eternal war among the people and peoples of the earth.

Looking at the current conditions on planet Earth, this question (who is in possession of the valid standard or the truth) has unmistakably actually involved in an eternal war.

There is hope that the "world formula" is not able to calculate the future or the influence of man on the climate - but it can show that the goal of man must not be seen as wanting or being able to control the future, but to handle the present.

With the world formula, man cannot better understand how his actions affect his fellow human beings, how his actions affect the planet or the universe or his own health. On the contrary, the world formula shows that this "wanting to control" (wanting to subjugate the earth) plunges man into misfortune. However, with the "world formula" he can better

understand how he should act if he wants to act intelligently – in harmony with feeling and reason.

"Feelings" has so far excluded the contemporary edifice of science, which refers exclusively to thinking, from the calculation and thus denies its existence (justification). No wonder, then, that people are at war with each other, because in the first place they are at war with themselves against this background.

Man's claim to want to save or dominate the planet, the environment, humanity or something greater in community as a unit is always thrown back to reality, in which the individual can only save himself and the only inseparable community and the only controllable community is the one between the observer and the observed (individual – God).