

# Was the light speed problem really solved by Einstein in 1905 ?

HenokTadesse, Electrical Engineer, BSc  
Ethiopia, Debrezeit, POBox 412, Mobile: +251 910751339/+251 912228639  
email: [entkidmt@yahoo.com](mailto:entkidmt@yahoo.com) or [wchmar@gmail.com](mailto:wchmar@gmail.com)

21 September 2019

## Abstract

I will try to invalidate the theory of relativity by presenting a compelling alternative theory. I hope that criticism of Einstein's theories will not be seen as offense.

## Introduction

I start by arguing that the failure of classical theories of light, ether theory and emission theory, wrongly led to the theory of relativity. One of the fallacious arguments usually presented in favor of relativity is the failure of classical theories and the lack of any competing alternative theory. The argument goes like: if classical theories fail and if no alternative explanation exists, then relativity must be a correct theory. Here I will present a compelling alternative explanation, thereby refuting this argument.

Next I will directly present some of the profound results of the new theoretical framework. A comprehensive presentation of the new theory, which describes the intricate relations of the different features of the nature of light, can be found in my papers at the Vixra site. Listed below are some of them.

*" Absolute/Relative Motion and the Speed of Light, Electromagnetism, Inertia and Universal Speed Limit  $c$  - an Alternative Interpretation and Theoretical Framework "*

*" A New Theoretical Framework of Absolute and Relative Motion, the Speed of Light, Electromagnetism and Gravity "*

*" New Interpretation and Analysis of Michelson-Morley Experiment, Sagnac Effect, and Stellar Aberration by Apparent Source Theory "*

*" The Irrelevance of Abstract Reference Frames in Physics "*

## Einstein's "chasing a beam of light" thought experiment

Einstein correctly discovered his beautiful "chasing a beam of light" thought experiment, but gave it a wrong interpretation, i.e. the relativity of length and time. The new interpretation of constancy of light speed is as follows:

The *phase* velocity of light is always constant relative to the observer, irrespective of source or observer velocity, for uniform or accelerated motion. The *group* velocity of light behaves in a more conventional way: it is independent of source velocity, but varies with observer velocity. Einstein failed to make this distinction and this led to the special theory of relativity.

The constancy of the *phase* velocity of light is a direct consequence of the non-existence of the ether. Physicists were led astray when they tried to 'explain' the constancy of the velocity of light, by proposing the relativity of length and relativity of simultaneity. The phenomenon of constancy of the (phase) velocity of light is to be just accepted because it does not have any explanation for the same reason that there is no explanation for light being a wave when there is no medium for its transmission. Physicists naturally sought to 'explain' the constancy of the speed of light because their thinking was always implicitly based on the ether. Einstein did not truly succeed in eliminating the ether, and Einstein himself never realized this. Few, if any, physicists realize this. The ether always haunted the thinking of the physicists.

Imagine a stationary light source emitting a light pulse and an observer moving directly away from the source at (or near) the speed of light. The new interpretation of Einstein's thought experiment is that the group will be 'frozen' but the phases will still move past the observer at the speed of light  $c$ , relative to the observer.

For the phase velocity of light to be constant not only the frequency but also, unconventionally, the wavelength must change for a moving observer.

$$f\lambda = f'\lambda' = c$$

The change of wavelength for a moving observer is a unique, unconventional nature of light. This makes light distinct from classical waves, such as sound waves.

This should raise a question: then what is the Doppler effect law governing light that can satisfy the above condition? The classical Doppler effect law obviously fails to satisfy this condition.

## **Exponential Doppler Effect law of light**

Searching for a function that can satisfy the above condition, I found a new mysterious formula governing the Doppler effect of light.

$$f' = f e^{V/c} \quad \text{and} \quad \lambda' = \lambda e^{-V/c} \quad , \quad \text{where } e \text{ is Euler's constant}$$

Now

$$f' \lambda' = f e^{V/c} \lambda e^{-V/c} = f \lambda = c$$

satisfying the constant phase velocity. No conventional formulas containing terms like  $c \pm V$  can satisfy this condition.

Profoundly, the above formula not only satisfies the constant phase velocity condition, it can also explain the Ives-Stillwell experiment ! By applying Taylor expansion to the exponential function, we get exactly the same result as predicted by special relativity:  $\Delta\lambda = \frac{1}{2} \beta^2 \lambda$

The derivation can be found in my paper at Vixra:

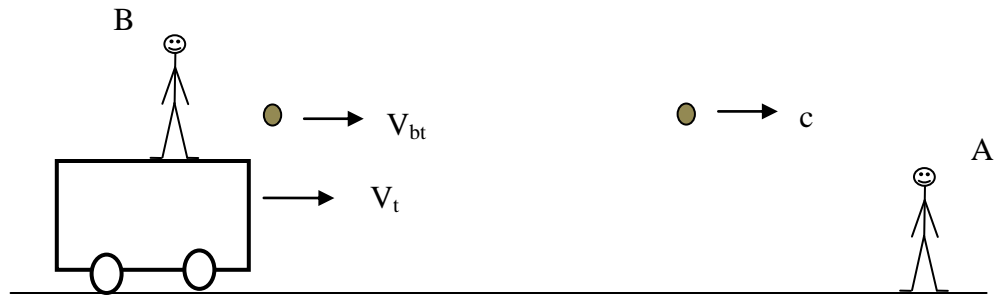
*" Exponential Law of Doppler Effect of Light – an Explanation of Ives-Stillwell Experiment "*

Moreover, the new formula is defined for all values of velocity  $V$ :  $0 \leq V \leq \infty$  , whereas the relativistic formula (and classical formulas) become undefined for  $V \geq c$  . Therefore, the existence of superluminal velocities (as already observed) by itself disproves the relativistic and classical formulas, implying the need for a new law of Doppler effect of light.

## **The Michelson- Morley experiment**

Let us first see a possible explanation for the Michelson-Morley experiment, as a precursor to the ultimate theory called Apparent Source Theory. This is just to demonstrate that explanations exist that do not require us to invoke length contraction and time dilation.

Consider the following analogy. Consider a stationary observer A and a truck moving relative to A. Another observer B is on the truck, throwing balls towards observer A while the truck is moving relative to A. Suppose the truck ( and observer B ) moves towards observer A with velocity  $V_t$  . Suppose that the velocity of the truck is not constant. Let there be a requirement that observer B always adjusts the velocity of the balls *relative to the truck* (  $V_{bt}$  ) so that the velocity of the ball relative to observer A will always be constant  $c$  , irrespective of the velocity of the truck. In this case, observer B should decrease the velocity of the balls *relative to the truck* in such a way that the velocity of the ball relative to observer A is always constant  $c$  . In the case of the truck moving away from the observer A, the velocity of the balls relative to the truck should be increased by the right amount.



$$V_t + V_{bt} = \text{constant} = c$$

By observing the balls coming from the truck, an observer deduces that the velocity of the balls *relative to the truck* is  $c - V$  in the forward direction and  $c + V$  in the backward direction.

When the truck is moving towards stationary observer A:

$$\text{velocity of light relative to observer A} = (c - V_{abs}) + V_{abs} = c$$

When the truck is moving away from stationary observer A:

$$\text{velocity of light relative to observer A} = (c + V_{abs}) - V_{abs} = c$$

Thus, the velocity of the balls relative to observer A is always constant  $c$  independent of the velocity of the truck, analogous to the speed of light being constant  $c$  relative to an observer at absolute rest, independent of source velocity.

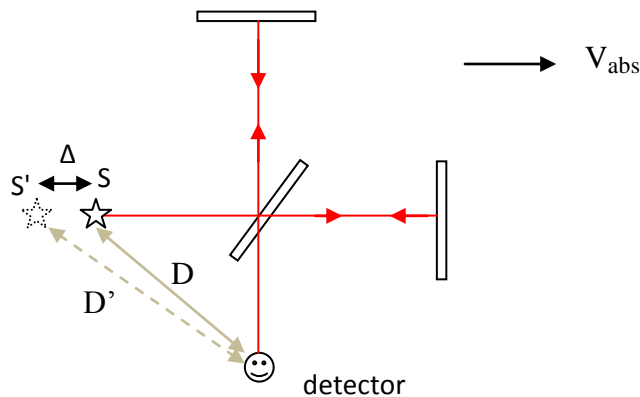
It is now easy to see the null result of the Michelson-Morley experiment ( MMX ) by the modified emission theory above. Modified emission theory is just conventional emission theory in which the velocity of light *relative to the source* depends on the absolute velocity of the source. In the case of the Michelson-Morley experiment, therefore, any change of the speed of light relative to the light source will not cause a fringe shift because both the longitudinal and transverse beams will be affected ( delayed or advanced ) by equal amount. Note that we have not made any reference to the ether in the above theory.

The above theory is just an attempt to present the ultimate theory ( Apparent Source Theory ) in an intuitive way. It is fundamentally not correct.

## Apparent Source Theory

Now we will see the trick of nature that has eluded physicists for centuries.

Consider the Michelson-Morley experiment shown below.



Apparent Source Theory is formulated as follows.

*The effect of absolute motion for co-moving light source and observer/detector is to create an apparent change in position ( distance and direction ) of the source relative to ( as seen by ) the observer/detector. The apparent change in position of the light source is determined by the source-observer direct distance and the magnitude and direction of absolute velocity.*

The easiest way to understand Apparent Source Theory is to ask a simple question: what is the effect of actually/physically changing the light source position of the Michelson-Morley interferometer (instead of setting it in absolute motion) on the interference fringes ? For example, what is the effect of actually moving the light source slightly backwards (to the left), as shown above, on the interference fringes ? Obviously, there will not be any fringe shift because, intuitively, both the longitudinal and transverse light beams will be affected ( delayed ) identically. There will not be any fringe shift also if the source is slightly moved forward (to the right ) because both light beams will be advanced equally. There will be a small fringe shift for other positions of the source, for example if the source is moved upwards or downwards.

The new interpretation is that an apparent change of source position (caused by absolute motion ) will not create any significant fringe shift ( no fringe shift or a small fringe shift ) for the same reason that an actual/physical change of source position will not create any significant fringe

shift. This explains the 'null' result of the Michelson-Morley experiment. This is the subtle nature of light that completely eluded physicists for centuries.

The procedure of analysis of the Michelson-Morley experiment is :

1. Replace the real source by an apparent source
2. Analyze the experiment by assuming that light is emitted from the apparent source position, not from the real source position.

The real source is replaced by an apparent source in order to account for absolute velocity. Once this is done, the experiment is analyzed by assuming that light is emitted from the apparent source and by using elementary geometrical optics. Once we replace the real source with an apparent source, we can assume emission theory, i.e. the speed of light is constant relative to the apparent source.

Apparent Source Theory can be seen as a seamless fusion of ether theory and emission theory.

### **Relation between constancy of phase velocity and Apparent Source Theory**

The constancy of the phase velocity of light ( and Exponential Doppler Effect theory ) governs the wavelength, frequency and phase velocity of light. Apparent Source Theory governs the phase delay and group delay of light.

### **Some of the profound findings of the new theory**

- The ether does not exist but absolute motion does exist. Physicists wrongly concluded that absolute motion didn't exist when they failed to detect the ether. The Michelson-Morley experiment (MMX) was designed to detect the ether and was capable to detect the ether, if the ether existed. The MMX is flawed in that it was designed to detect the non-existent ether. The Michelson-Morley experiment is not fully capable to detect absolute motion. Absolute motion is not motion relative to the ether. Absolute motion is motion relative to all matter in the universe.
- The reference frame concept is wrong and should be eliminated from physics as a paradigm. The true natures of light and electromagnetism always elude the third 'observer' ( the reference frame ). The new definition of observer is the object ( particle, atom or device ) *directly* sensing or detecting light, electromagnetic and gravitational phenomena.
- One of the profound, unexpected findings concerns the phenomenon of stellar aberration. The current, universal understanding is that a telescope needs to be tilted forward in the direction of observer's velocity in order to see the stars. Apparent Source Theory predicts that the telescope should be tilted *backwards*, not forwards !

- The same law governs the Michelson-Morley experiment and the phenomenon of stellar aberration: *apparent change of light source position relative to an absolutely moving observer* !  
See my paper at Vixra:

" *A new insight explains both the Michelson-Morley experiment and stellar aberration- Apparent change of light source position relative to an absolutely moving observer* "

- Dual natures of light, electromagnetism and gravity. The speed of electrostatic and gravitational fields has dual nature: infinite and finite ( light speed  $c$  ) ! Static fields act as if they are both transmitted at the speed of light  $c$  and instantaneously. Light acts as if it travels both in straight line and in curved path ! For absolutely co-moving light source and observer, light follows curved path if we assume it as coming from the real source, whereas light always follows straight path if we assume it as coming from the *apparent* source. For co-moving charge (mass) and observer, the electric (gravitational) lines of force follow a curved path if we consider the real charge (mass), whereas the electric (gravitational ) lines of force always follow a straight path if we consider the apparent charge (mass).

- Light is not only a local phenomenon, but also a non-local phenomenon. Light is a *dual* phenomenon: local and non-local! All the confusion in physics during the last century is rooted in considering light like ordinary, local phenomena. The Michelson-Morley experiment was conceived and designed based on such a fallacious view. The special theory of relativity is a mistake built on previous mistakes. If the scientists had not considered light like ordinary local phenomena ( by considering light as an ether wave ), there would have been no need to speculate ' length contraction and time dilation ' .

- The group velocity of light can be seen both as constant and variable. For co-moving light source and observer, for example, the group velocity of light is always constant  $c$  if we assume that light is emitted from the apparent source position. If we assume that light is emitted from the real/physical source position, the group velocity of light will be variable.

- Unlike classical fields and waves, *there is no mixing of absolute and relative motion effects in the case of light and electromagnetism*. This is why no absolute motion effect has been observed in the Ives-Stilwell experiments. Einstein's magnet conductor argument against the existence of absolute motion is wrong because magnetism is a relative motion effect, not an absolute motion effect. Weber's electrodynamics is the ultimate law governing electromagnetism, rather than Maxwell's.

- Light speed limit exists, but it is not universal.

1. It applies only to physical objects that have mass. Electrostatic and gravitational fields can be transmitted instantaneously.

2. Even for physical bodies, it applies only locally. A physical body cannot move at superluminal velocities relative to local matter in the universe, but it can move superluminally relative to distant matter in the universe. We know that superluminal galaxies have already been observed.

- The cosmic microwave background radiation may be just Doppler shifted light from receding galaxies.

- Gravity is a difference between electrostatic attraction and repulsion forces. In fact, this idea was first proposed by Michael Faraday. Apparent Source Theory has independently also led to the same conclusion. Gravity is a net electrostatic force and inertia is a net 'magnetic' force.

### **Proposed time of flight light speed anisotropy experiment**

Despite the null result of the Michelson-Morley experiment, absolute motion has already been detected in several experiments such as the Silvertooth, the CMBR anisotropy and the Marinov experiments. Many of the 'ether' drift experiments used interference method because of the difficulty of measuring extremely small differences in time of flight and because of the problem of clock-synchronization ( this problem does not exist in the new theory).

Here I will propose a novel light speed anisotropy experiment that is based on the time of flight method. The experiment consists of two light transponders, say transponder A and transponder B, each fixed to the two ends of a rigid rod. Each light transponder consists of a light detector unit and a light emitter unit. The light detector, upon detecting a light pulse, triggers the light emitter, which emits a short light pulse.

Suppose that, initially, transponder A is somehow triggered to emit a short light pulse. This pulse is detected by the detector of transponder B, which triggers the emitter of transponder B, which in turn emits a light pulse, which will be detected by the detector of A, which triggers the emitter of A, which emits a light pulse, and so on. The process can continue indefinitely. An electronic counter counts the pulses emitted.

Suppose that the rod is aligned with the direction of absolute velocity of the Earth. Because of light speed anisotropy, light will take more time, say, from A to B than from B to A. The novel feature of this experiment is that it accumulates the extremely small time of flight differences, over several minutes or hours. The number of pulses counted in a given period of time will depend on the orientation of the rod with respect to the direction of Earth's absolute velocity. By using this effect, the direction and magnitude of Earth's absolute velocity can be determined, theoretically, with any desired accuracy.

Conventional time of flight experiments use spatially separated light emitter and light detector. A single pulse is emitted by the emitter and detected by the detector. Because of the extremely small time of flight involved, it is difficult to detect light speed anisotropy by using this method using a single pulse. The new method circumvents this and any clock synchronization problem



by using a continuous exchange of a short light pulse between spatially separated transponders, thereby accumulating (integrating ) the small differences in time of flight of light in two directions.

A detailed description of the experiment is found in my paper at Vixra:

*" Proposal for a new light speed anisotropy experiment based on time of flight method by continuous exchange of a short light pulse between two light transponders "*

## **Summary**

Two components of a new theoretical framework have been presented:

1. Constant phase velocity and variable group velocity of light. Exponential Doppler Effect law of light
2. Apparent Source Theory

The new theoretical framework can be seen as a seamless fusion of classical and modern theories: ether theory, emission theory and constancy of the speed of light. Apparently contradicting natures co-exist in the phenomena of light, electromagnetism and gravitation. In effect, special relativity and all associated concepts such as Lorentz transformation, time dilation, length contraction ideas have been invalidated.

With respect to Apparent Source Theory, we have seen only the case of inertial motion. Extension of this special case to the general case of accelerating observers, such as in the Sagnac effect, has been a daunting task that took several years to complete.

Thanks to God and Our Lady Virgin Mary