

# Apparent Paradoxes in Apparent Source Theory

Henok Tadesse, Electrical Engineer, BSc.

Ethiopia, Debrezeit, P.O Box 412

Mobile: +251 910 751339; email [entkidmt@yahoo.com](mailto:entkidmt@yahoo.com) or [wchmar@gmail.com](mailto:wchmar@gmail.com)

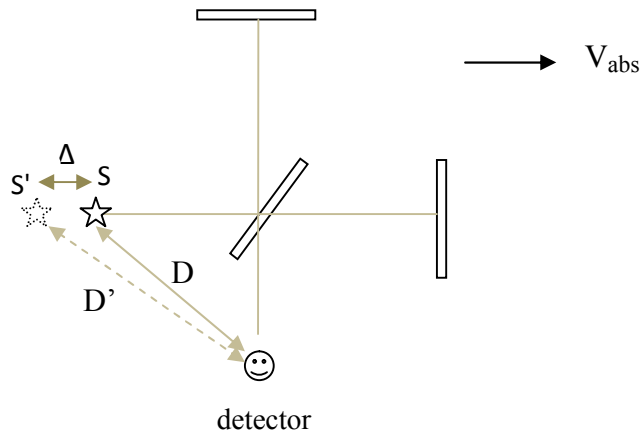
03 April 2017

## Abstract

According to Apparent Source Theory ( AST ), the position of a light source changes apparently relative to a co-moving observer, if the light source (and observer) is in absolute motion. Apparent Source Theory successfully explains almost all light speed experiments. However, there are some (apparent ) paradoxes in AST. In this paper, these paradoxes are described and solutions will be proposed.

## Introduction

In my previous papers[1][2], I was able to explain all light speed experiments by applying Apparent Source Theory ( AST ). According to AST, the position of a light source changes apparently relative to a co-moving observer, due to absolute motion. For example, in the Michelson-Morley experiment, the effect of absolute velocity is just to create an apparent change in the position of the light source relative to the observer/detector. An apparent change in the position of the light source will not cause any (significant) fringe shift for the same reason that an actual /physical change of light source position will not result in any (significant ) fringe shift because, intuitively, both the longitudinal and transverse light beams will be delayed or advanced by the same amount.



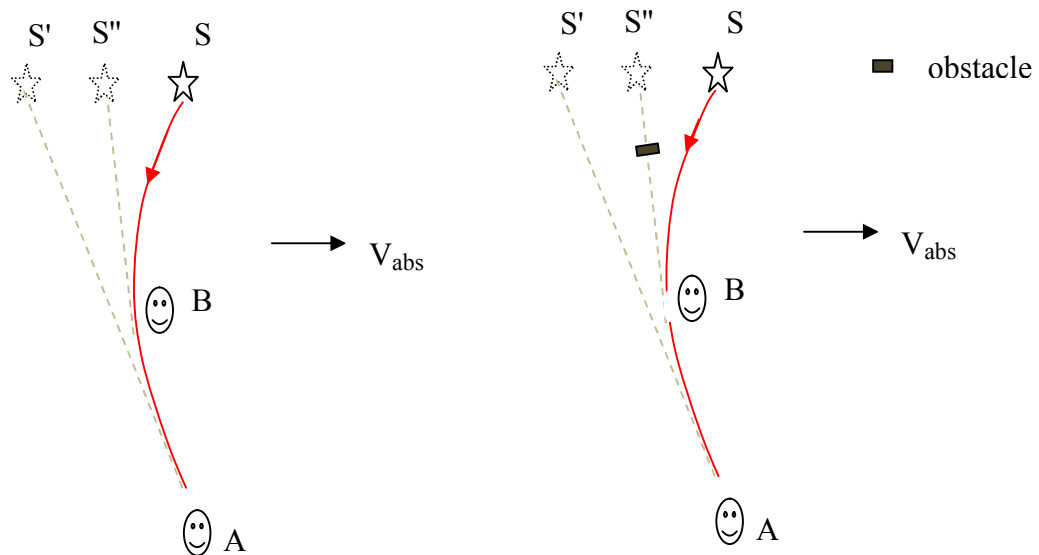
This theory ( AST ) enabled explanation of almost all light experiments: the Michelson-Morley experiment, the Kennedy-Thorndike experiment, the Sagnac effect, the Silvertooth experiment, the Marinov experiment, the Roland De Witte experiment, the Venus planet radar range data

anomaly ( reported by Bryan G Wallace ), the A Michelson rotating mirror light speed measuring experiment, terrestrial moving source and moving mirror experiments, and so on.

Despite all these successes, there were some bizarre phenomenon predicted by AST which did not seem to exist physically. In light of the many successes of AST, these paradoxes show that the theory or its interpretation are incomplete, not wrong. We will describe some paradoxes and propose solutions in the next section.

### Apparent paradoxes

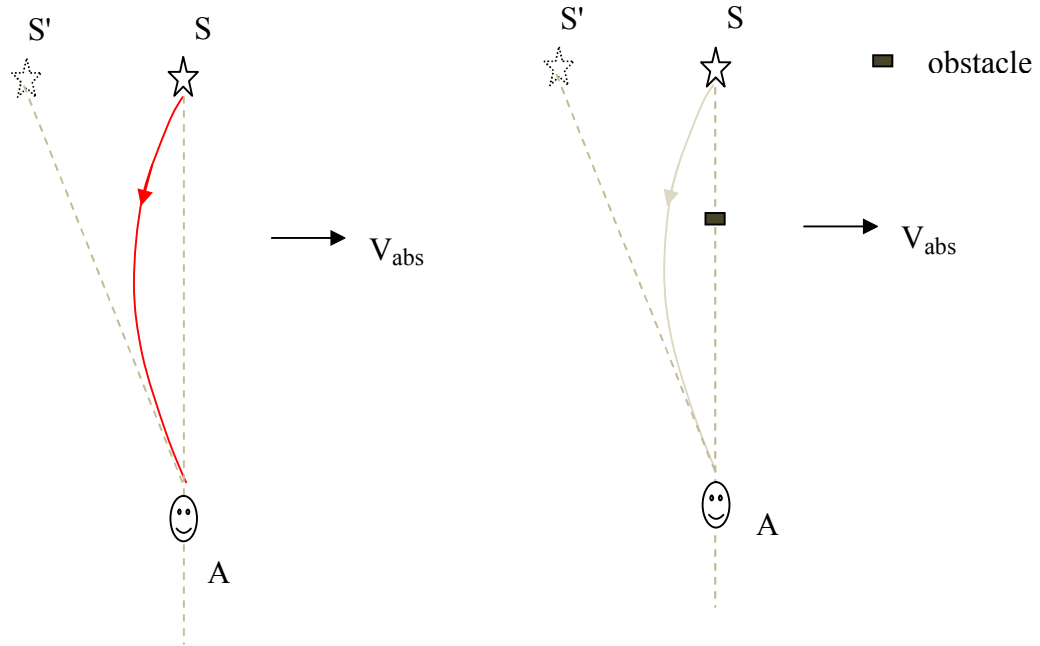
Let us see a strange phenomenon of light predicted by AST. Consider a light source and an observer co-moving with absolute velocity  $V_{abs}$ . The light rays from this source will be curved lines.



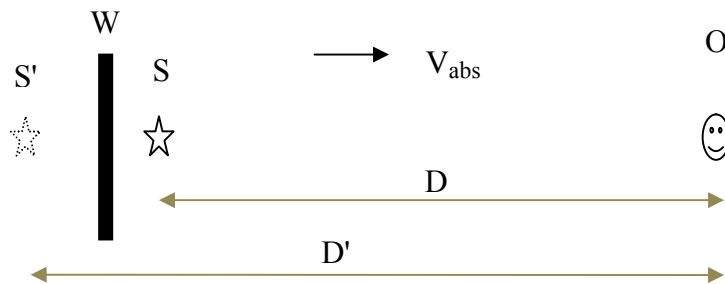
According to AST, observer A sees light coming from 'his own' apparent source  $S'$ . However, there is no light reaching observer B from 'his' apparent source  $S''$ , as shown by the red line broken at observer B position because there is an obstacle between observer B and apparent source  $S''$ , as shown in the figure. Therefore, although observer B is in front of observer A, he/she will not see light, while observer A will see light ! And, placing an obstacle along the curved ray somewhere in front of the observers will not block light coming to the observers! This strange behavior of light predicted by AST. This appears to be a bizarre phenomenon not existing in reality, both intuitively and logically /analytically.

A solution is proposed as follows. The apparent source, as its name implies, is only apparent. The apparent source relative to an observer at a given point is only used to calculate the time delay of light and the direction of arrival of light relative to that observer. Light originates from its physical source and not from the apparent source. But light emitted from the physical source behaves as if it started from the apparent source. Therefore, although the observer has to look in

the direction of the apparent source to see light, putting an obstacle between the line connecting the observer and the apparent source should not block light coming to the observer. Light coming to the observer is blocked only if there is an obstacle on the direct source-observer line.



As another example, consider absolutely co-moving source, observer and an opaque wall, as shown below.

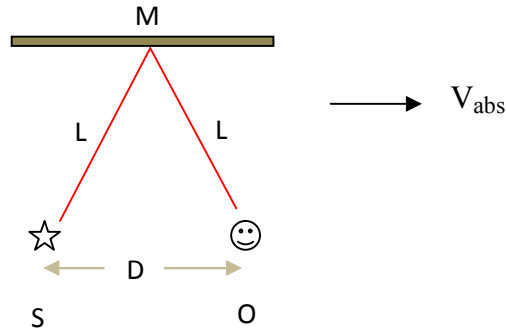


With zero absolute velocity, the observer sees light coming from the real source. With large enough absolute velocity, the apparent position of the source can be behind the wall. Will the observer see light now? The answer is 'yes' because, as we have stated above, only an obstacle on the straight line connecting the physical/real source and the observer will block light coming to the observer. Since the wall is not between the real source and the observer, the observer will see light coming from  $S'$ . We stress again that light physically originates from the physical source, but it behaves as if it was emitted by the apparent source. The apparent source seen from

a given point is used only to determine the time delay and direction of arrival of light relative to that point.

I faced another problem regarding experiments involving mirrors. Consider a light source S, an observer O and a mirror M, co-moving to the right with absolute velocity  $V_{abs}$ .

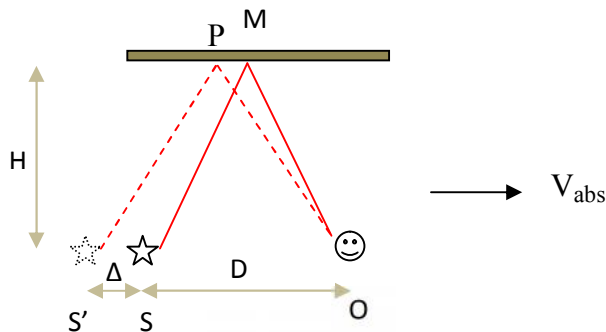
With the system ( the light source, the mirror, the observer ) at absolute rest, light will reach the observer after reflection from the mirror, as shown below.



If  $V_{abs}$  is zero, then the time delay between emission and reception of a light pulse will be

$$t_d = \frac{2L}{c}$$

If  $V_{abs}$  is not zero, then the source S appears to have shifted away from the observer O by an amount  $\Delta$ , as shown below.

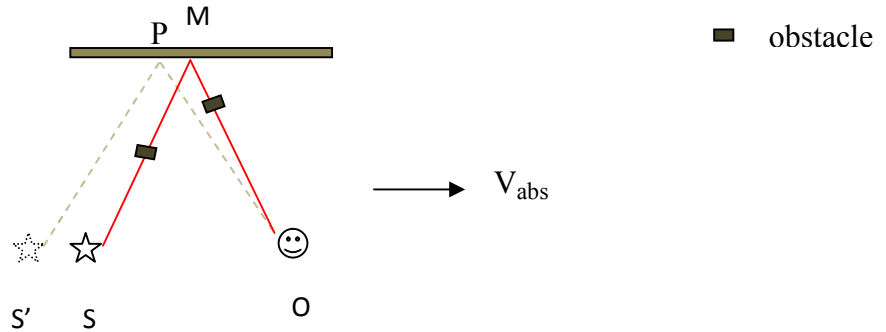


$$\Delta = D \frac{V_{abs}}{c - V_{abs}}$$

We can see from the figure above that the apparent light (dashed red line) coming from the apparent source S' will reflect from the mirror at point P. The question is : will the observer see light if part of the mirror at point P is missing ?

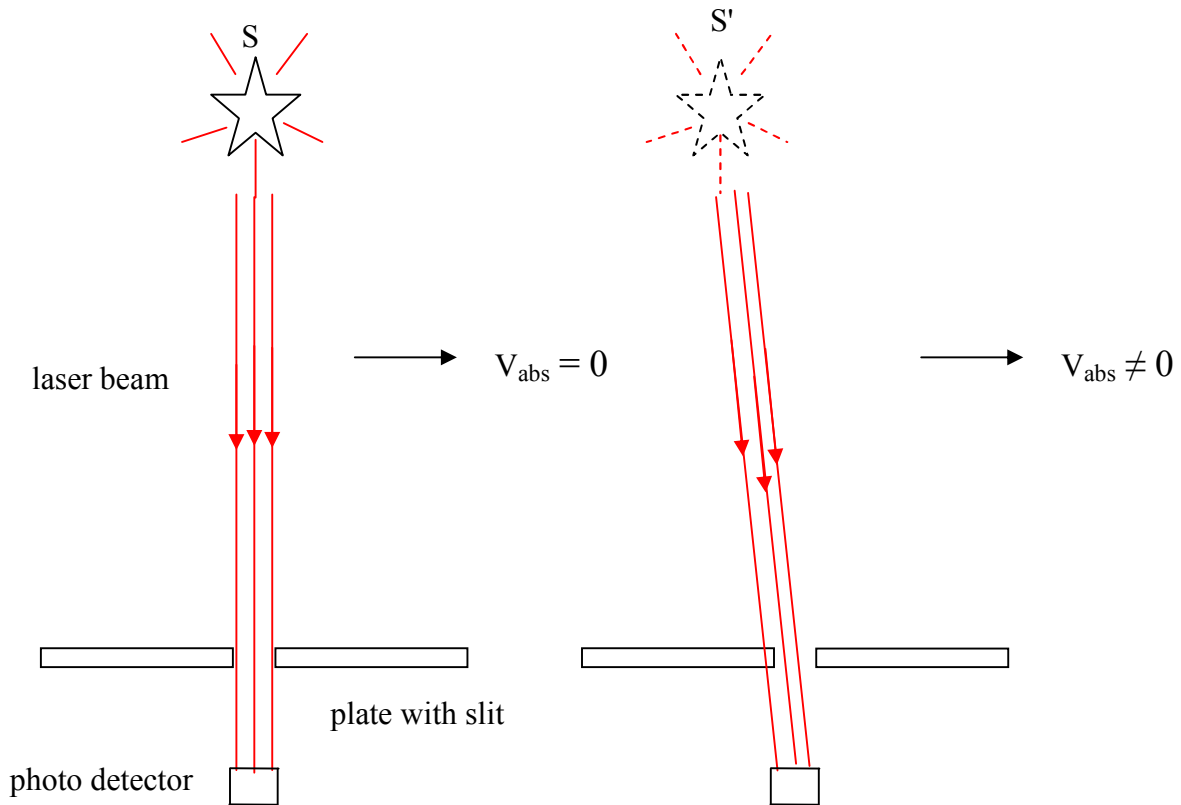
I propose that, for light to reach observer O,

1. There should be no obstacle along the red solid line which is the light ray for the case of zero absolute velocity
2. There should be mirror at point P



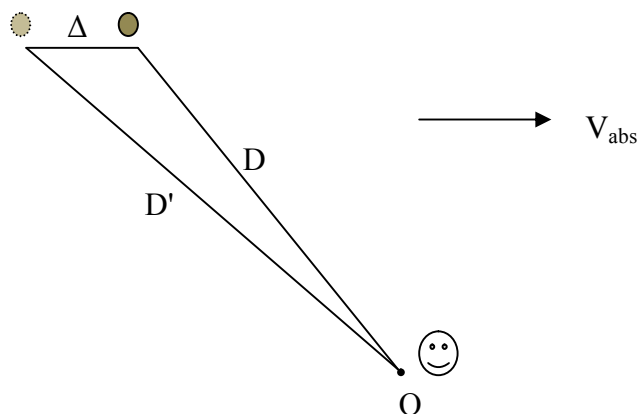
In the above diagram the observer will not see light coming from S' because the path of light during absolute rest (the solid red line) has been blocked by an obstacle. Gray dashed line shows no light coming from S'.

Let us consider an experiment consisting of co-moving light source, plate with slit and photo detector. Assume the light source to be an isotropic point source. At zero absolute velocity, the light source, the slit and the photo detector are aligned for optimum photo detector output. When the system is set in to absolute motion to the right, as shown below, the position of the light source apparently shifts towards the left ( from S to S' ) relative to an absorbing atom of the photo detector. Then one could think that, according to AST, part of the light that reached the photo detector when  $V_{abs} = 0$  will be blocked by the plate due to misalignment caused by absolute motion and that the photo detector output will vary with change in absolute velocity. However, from our discussion above, there will be no variation in photo detector output with change in absolute velocity because the plate will not block light coming to the detector.



Now consider real light sources with finite size, with billions of emitting atoms. In this case the principle ( Apparent Change of Source Position Relative to Co-moving Observer Due to Absolute Motion ) is applied to every infinitesimal element of the source. In this case not only will the position of the source change apparently relative to the detector, but the shape and the position of the source will change apparently. Therefore, the photo detector may vary with absolute velocity for real sources.

Consider an infinitesimal element  $S$  of the light source ( for example an infinitesimal element of the radiating wire of an incandescent lamp) and an observer (photo detector )  $O$  at arbitrary point  $O$  .



D is the distance between the observer O and the infinitesimal element S when both are at rest ( $V_{abs} = 0$ ). If the infinitesimal element S and observer O are in absolute motion, the position of S changes apparently relative to the observer. The apparent position of the infinitesimal element is determined from the following vector equations:

$$\frac{D'}{c} = \frac{\Delta}{V_{abs}}$$

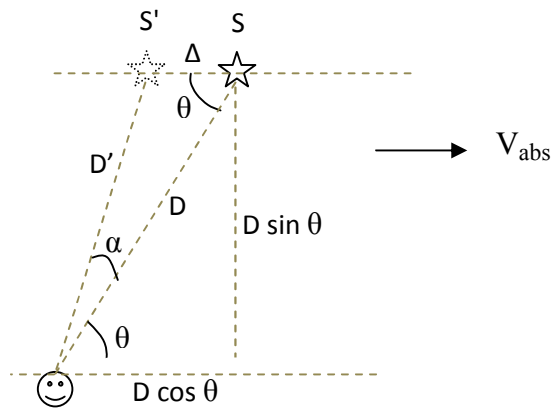
and

$$D + \Delta = D'$$

where c is the speed of light.

The above equations are for infinitesimal element. For the whole light source, AST will be applied to every infinitesimal element of the light source. The apparent position of every infinitesimal element is determined, from which the apparent position and the apparent shape of the light source is determined. Note that, when we say 'source' we mean, for example, the radiating wire of an incandescent lamp, not other parts of the lamp.

Next we will determine the apparent position of a light source relative to a co-moving observer. Consider a light source and an observer absolutely co-moving, as shown below.



We want to get the relationship between  $\theta$  and  $\Delta$ .

$$\Delta = D \cos \theta - \sqrt{D'^2 - D^2 \sin^2 \theta} \dots \dots \dots (1)$$

$$\frac{D'}{c} = \frac{\Delta}{V_{abs}} \dots \dots \dots (2)$$

From (1) and (2)

$$D'^2 \left(1 - \frac{V_{abs}^2}{c^2}\right) + \frac{2DV_{abs}}{c} \cos\theta D' - D^2 = 0$$

which is a quadratic equation of  $D'$ .

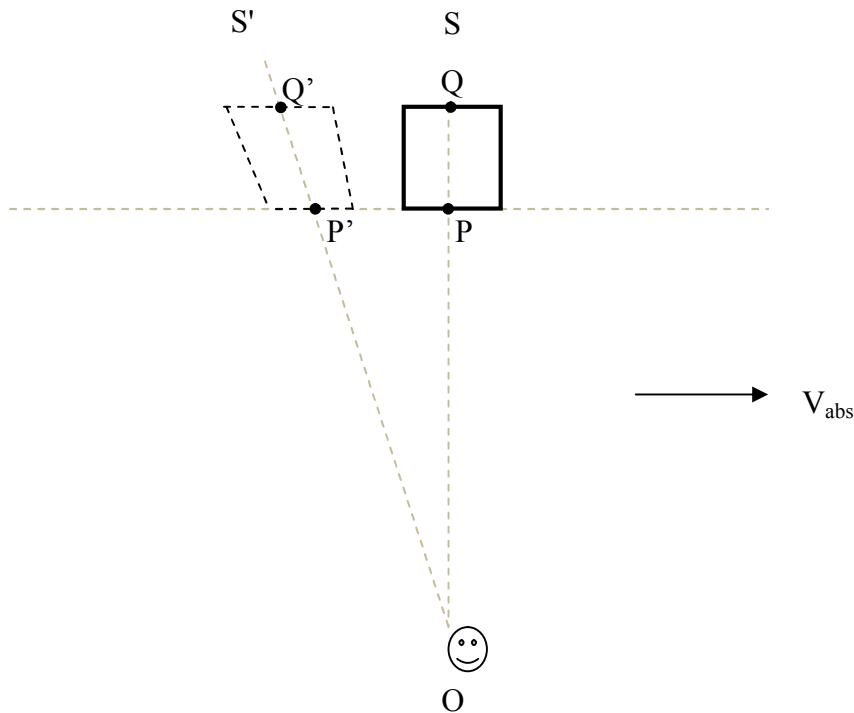
$$D' = \frac{\frac{-2D V_{ab} \cos\theta}{c} + \sqrt{\left(\frac{2D V_{ab} \cos\theta}{c}\right)^2 + 4\left(1 - \frac{V_{abs}^2}{c^2}\right)D^2}}{2\left(1 - \frac{V_{abs}^2}{c^2}\right)}$$

$$\Rightarrow D' \approx D - \frac{DV_{abs}}{c} \cos\theta = D\left(1 - \frac{V_{abs}}{c} \cos\theta\right), \text{ for } \frac{V_{abs}^2}{c^2} \approx 0$$

From (2),

$$\Delta = \frac{V_{abs}}{c} D' \Rightarrow \Delta = D \frac{V_{abs}}{c} \left(1 - \frac{V_{abs}}{c} \cos\theta\right) \dots \dots \dots (3)$$

Just for illustration purpose, assume that the radiating element is a rectangular block S, i.e. every atom of the rectangular block emits light. The apparent position and shape of S is constructed by applying AST to every infinitesimal element of S. For example, the apparent position of an infinitesimal element P will be  $P'$ . In the following diagram the apparent positions of two points P and Q have been shown. Note that the diagram is only for illustration purpose and is not accurate.





## **Conclusion**

Apparent Source Theory is a highly successful theory. However, it is accompanied with paradoxes. In light of all the successes of AST, these paradoxes should be only apparent and not real. In this paper we have seen the paradoxes and provided satisfactory solutions.

Thanks to God and the Mother of God, Our Lady Saint Virgin Mary

## **References**

1. Absolute/Relative Motion and the Speed of Light, Electromagnetism, Inertia and Universal Speed Limit  $c$  - an Alternative Interpretation and Theoretical Framework, Vixra, by Henok Tadesse
2. Absolute Motion, the Speed of Light, Electromagnetism, Inertia and Universal Speed Limit  $c$  – Apparent Change of Source Position Relative to Co-moving Observer, Vixra, by Henok Tadesse