

What really is time? A multiple-level ontological theory for time as a property of matter

Pons D.J.¹

Abstract

A non-local hidden-variable (NLHV) solution is used to address the ontological question: What is time? This NLHV theory ('cordus'), which has been successfully applied to other phenomena, includes a particular design for the internal structure of particules and their externalised discrete fields. In this specific area it provides a novel multi-level for concept time, and proposes candidate solutions to the problem of what time is and how its arrow arises. According to this theory, time at the fundamental level consists of the frequency oscillations of matter particules, and thus time is locally generated and a property of matter. At the next level up, that of the assembly of matter particles via bonds and fields, the interconnectedness creates a patchwork of temporal cause-and-effect, and hence a coarser time. A phenomenon that occurs in one volume is communicated via photons, or massy particules, or fields, to other matter around it. Thus time is also universal and relative. According to this Cordus theory, entropy, classical mechanics, and our perception of time all arise at the boundary between coherence and decoherence, and the theory explains how. The arrow is applied to time where irreversibility arises, i.e. at the assembly level rather than the fundamental level. Time at the macroscopic level is therefore a series of delayed irreversible interactions (temporal ratchets) between sub-microscopic domains of matter, not a dimension that can be traversed in both directions. The theory extends to time at the level of organic life. It explains how the human-perception of time arises at the cognitive level, and why we perceive time as universal. This theory suggests that time is all of particle-based vs. spacetime, relative vs. absolute, local vs. universal, depending on the level of assembly being considered. However it is also none of those things individually. This paper shows that questions about time can be answered at the next deeper level of physics, and gives an example of what that physics might look like and its implications for time.

Keywords: time; Cordus conjecture; hidden variable; cognitive; spacetime; quantum mechanics; general relativity; decoherence; arrow of time; irreversibility; de Broglie; frequency; time dilation

Edition 2 > Date: Monday, 14 January 2013 > Document: Pons_CordusTime_6.2_E2.1.23.doc

¹ Please address correspondence to Dr Dirk Pons, University of Canterbury, Private Bag 4800, Christchurch 8020, New Zealand, Email: dirk.pons@canterbury.ac.nz. Copyright D Pons 2013. This work is made available under the [Creative Commons Attribution-Non-Commercial-ShareAlike 3.0](https://creativecommons.org/licenses/by-nc-sa/3.0/) license. This paper is an extension of an earlier paper titled 'Time', which may be found at <http://vixra.org/pdf/1201.0060v1.pdf>

1 Introduction

Though intuitively familiar, time is a mystery. Time is a variable throughout physics: classical mechanics, thermodynamics, quantum mechanics (QM), and general relativity (GR) all include it. Yet the constructs in each are very different. The topic flows through many discourses and fields of study other than pure physics. It has implications in philosophy for how life exists in the framework of finite time, theological questions about what existence there might be beyond time and this universe, and psychological questions about how we perceive time in a cognitive sense. There are also unsolved integrative problems, like how the time that emerges at the level of atomic clocks transfers to the world at large, whether there is an absolute time, how time started, how time dilation works, and how the arrow of time arises.

All these approaches, physics, psychology, philosophy, have models for time. Yet they are poorly integrated, indeed sometimes in conflict. Nor are those constructs always coherent with humans' personal cognitive perception of time. For example, the idea that time runs differently depending on gravitation or velocity, or that time may have had a beginning (and therefore not existed before the universe), is deeply puzzling to the mental model of many people.

The models of quantum mechanics and general relativity are particularly difficult to reconcile, and a major line of ongoing theoretical research. Time is still a mystery, and there is no universal-theory of time that is acceptable to all the disciplines. The problem of time is also strongly coupled to several other foundational problems in physics, described below, so that they can be considered linked problems.

Therein lies both a challenge and an opportunity. The challenge is that any solution for time must also be compatible with many known phenomena, while solving other problems. Thus a solution for time should ideally also unify quantum mechanics and general relativity, and solve quantum gravity into the bargain. This makes time a complex problem, one that will probably require an integrated solution. However, if such a solution exists, it is not clear in which direction it may lie, though quantum gravity seems the best hope.

Given this state of affairs, particularly the slow progress in addressing the ontological problem of what time really *is*, perhaps there is merit in attempting more unusual approaches? There may opportunity to unravel the problem of time by instead unpicking a different part of the problem. Given the many facets of time, there are many places where one could start. We select to start at the particle level. More specifically, we show how a specific non-local hidden-variable (NLHV) solution provides the requisite integrated solution. The particular area under examination in this paper is the time theory that emerges from the Cordus conjecture.

In this specific area it provides, as will be shown, a novel concept for time, and proposes candidate solutions to the problem of what time is and how its arrow arises.

2 Literature

Many of the fundamental problems in physics are connected. Time, or rather the apparent lack thereof, also features in the phenomenon of entanglement, whereby two geometrically separated particles are able to superluminally influence each other, or at least respond to measurement in a co-ordinated manner (which may not be the same thing). So this drags *locality*, *realism*, and *local realism* into the debate. These come with their own ambiguity of definition and debates about how to represent them mathematically. In turn entanglement suggests that either the fundamental reality is probabilistic (the Copenhagen interpretation) or that particles have an internal structure, i.e. a non-local hidden-variable (NLHV) solution. The bulk of popular opinion favours the former. However this has always been a contentious topic, and remains so to the present. The debate started from the Einstein–Podolsky–Rosen (EPR) criticism that ‘the description of reality as given by a wave function is not complete’ [1]. In defence of quantum mechanics a number of Bell-type constraints were identified [2, 3] that preclude many classes of hidden variable solutions. Perhaps not all [4, 5], though if a NLHV solution actually exists it would have to be something exotic [6] as the solution space is highly constrained.

Entropic approaches

The problem of time is also closely linked to entropy, and indeed the concept of ‘arrow-of-time’ is often discussed in that context. Time features in general relativity and thus gravitation in general. It is expected to be involved in any theory of quantum gravity [7].

One of deep problems is that the interactions of fundamental particles are reversible (symmetrical). This is not contentious, as both Newtonian physics and quantum mechanics are comfortable with the idea that dynamic interactions are invariant when time is reversed (time-reversal invariance), and this is seen most clearly in equations of motion [8]. Hence the micro-reversibility principle, that past and future directions cannot be distinguished in a system at equilibrium [9].

The question is how the irreversibility of macroscopic behaviour emerges from the reversible physics. This is the problem of asymmetrical-time. This time-asymmetry is a large and persistent problem (‘the ever-lasting question’ [9]), and although many ideas have been put forward, there is no completely satisfactory solution. The basic idea is that the arrow of time is associated with irreversibility, hence also entropy and the Second law of thermodynamics. Specifically that time is related to the entropy gradient.

Thus much effort has been exerted to explain how and where the irreversibility arises, with an expectation that this will yield an explanation of time too. Any number of entropic solutions are on offer with various features. For example: time is a correlation device relative to a clock (master clock) to ‘keep track’ of the sequence of instants or small changes arising at the quantum level [10]; time emerges from the irreversibility of

nonlinear interactions and phase changes within complex systems [11].² However that complexity argument is contentious. The question, which is also relevant to chaos theory, is whether complexity necessarily results in irreversibility, not at all, or only at certain thresholds. Also, even if it does provide irreversibility, whether it still preserves determinism.

The difficulty is compounded by not knowing whether the arrow of time exists at every scale from the fundamental particle to the universe, or emerges at some particular scale. A complementary idea is that there may be several arrows of time [12]. However the residual question with this approach remains: where (at what level) and how does the irreversibility of time arise?

Spacetime

While one line of attack on the problem, perhaps the main approach, has been to associate time and entropy, there have also been other approaches. One of these is to construct time as non-entropic and instead as an intrinsic property of spacetime [8]. This is because entropy has problems of its own. It is defined well-enough in engineering, but its definition at the level of the cosmos is still controversial [8]. However, the mechanisms are unknown whereby time might be such a property of spacetime. In addition, there is dissent as to whether spacetime has a substantial status or is merely the relationships between bodies [13].

Philosophy

Philosophical issues abound [13]. There is the issue of the Now: how the future becomes the present human experience of reality, and then immediately becomes the irrevocable past. This also connects to theological issues about predestination and free-will [14].³ Then there is the question of the existence and permanence of three-dimensional objects in time. Related to that is the question of how measurement by an observer changes the system, and whether spacetime is an infinitely divisible continuum, hence also the Zeno paradoxes.⁴

² Mainzer also contends that the 'emergence of life is not so special in the universe' because it arises from the 'nonlinear dynamics of complex molecular systems'. However the mechanism whereby chemistry becomes life is not identified, nor has the process been replicated artificially, so the confidence of the proposition seems deliberately provocative rather than grounded in evidence.

³ If God exists, how is it that he knows the future but yet humans still have free-will? Or are those assumptions wrong? Does God know only the present and the past state of the universe? Does God operate timelessly?

⁴ The Zeno paradoxes explore the divisibility of motion. For example, in the race between the Achilles and the tortoise, where the tortoise is given an initial lead, in any one durationless moment Achilles moves closer to the tortoise, but the tortoise also moves forward a smaller amount, so by this line of thinking Achilles can never overtake the tortoise. But we do not see this, so consequently this durationless concept of time is presumably wrong as a foundation for understanding velocity. The other common modern application of Zeno's point-like analysis of effects is the quantum Zeno effect. Here a quantum system, one that is inherently randomly variable, will not change at all when under continuous observation. This taps directly into the question of the observer's role in quantum systems, whether an observer is necessary to collapse the indeterminacy of the wavefunction, and if so how. From the Cordus perspective this is straightforward to answer: contextual measurement arises because the act of measurement necessarily involves the observer using fields or matter, either of which produce discrete field

Others perceive the whole problem is simply an artefact of an anthropocentric perspective; that the difference between past and future is a perception and that it is illegitimate to word the problem of the arrow-of-time in these terms [8]. To this line of thinking, temporal asymmetry is a merely a cognitive artefact, and we are to view the problem from outside time (atemporal). However this is ontologically unsatisfactory because no explanation is available for the cognitive mechanisms, nor for how the proposed underlying temporal symmetry would operate, nor for the atemporal state. There are too many unsubstantiated premises. In some theology perspectives God is atemporal [14].

To summarise, there is a rich tapestry of concepts about time, yet no big picture. There are many competing theories, and selecting between them is a matter of personal choice rather than any preponderance of evidence.

3 Purpose

The purpose of this paper is to explore the concept of time through the lens of the Cordus conjecture. The Cordus conjecture is a novel alternative conceptual theory, constructed on a fundamentally different concept for 'particles'. It was originally conceived as a solution for the problem of wave-particle duality [15]. It turns out to be useful for reconceptualising other areas of fundamental physics (see Appendix B). In this specific area it provides, as will be shown, a novel concept for time, and proposes candidate solutions to the problem of what time is and how its arrow arises.

4 Background: Cordus conjecture

What is the Cordus conjecture?

The conjecture proposes that all 'particles', e.g. photons of light, electrons, and the protons in the nucleus of the atom, are not zero-dimensional points, but have a specific internal structure called a 'cordus particule'. The term 'particule' is used to differentiate this important conceptual difference from the QM construct.

The Cordus conjecture is a non-local hidden-variable (NLHV) solution that was initially applied to explain entanglement and wave-particle duality [15]. The conjecture starts by questioning the premise of particles being zero-dimensional (0-D) points, then infers what functionality is required, and then designs a specific internal and external structure, the cordus particule.

elements (cordus: hyffons) that interact with the field elements of the system under observation. Thus there is a coupling, mediated by discrete fields, and it is the nature and strength of the constraints created in this connection that results in the observer affecting (to various degrees of intrusiveness) the system being measured. The quantum Zeno effect is therefore explained in the Cordus conjecture as a delicate system being forced to behave in a certain way due to the imposition of external discrete fields that originate with the observer's measuring equipment. Thus also the observer's choice of when to make the measurement, and how to make it, affects the system under consideration. Hence also a Cordus explanation for the delayed-choice double-slit experiment.

The design process has further refined the features of the cordus particule, by checking the theory against a variety of phenomena, and designing new features and properties on the basis of requisite variability.⁵ The resulting theory has high fitness and coherence: fitness in the ability to explain many phenomena in physics, and high coherence in its logical consistency.

Inner structure of the cordus particule

The basic idea is that every particule has two reactive ends, which are a small finite distance apart (span), and each behave like a particle in their interaction with the external environment. A fibril joins the reactive ends and is a persistent and dynamic structure but does not interact with matter. It provides instantaneous connectivity and synchronicity between the two reactive ends. Hence it is a non-local solution: the cordus is affected by more than the fields at its nominal centre point. The reactive ends are energised (typically in turn) at a frequency.

External structure: cordus discrete field structures

The reactive ends emit one or more field lines (hyperfine fibrils or hyff) into space, and when the reactive end is energised it sends a transient force pulse (hyffon) outwards along the hyff curve. This makes for a field of discrete elements. The direction, bending, and torsion of the hyff and hyffon carry the electrostatic field, magnetism, and gravitation respectively and simultaneously. In this theory the photon has a single radial hyff which it periodically extends and withdraws. By comparison all massy particules have permanent hyff (including neutral particules like the neutron). Electric charge is carried at 1/3 charge per hyff, so the electron has three hyff, arranged orthogonally, hence hyff emission directions (HEDs). The HEDs are comparable to colour in QCD. The hyff around assembled massy particules compete spatially for emission directions, and may synchronise their emissions to access those spaces. Thus there is mutual negotiation between interacting particules, based on shared geometric timing constraints, and this synchronicity is proposed as the mechanism for the strong force. See Figure 1 for examples of the structure and principles.

⁵ Design is particularly good at this activity of inferring the necessary internal structure from the functionality required. In typical applications of new product development (NPD), the design process is applied to the future functionality, e.g. the specification desired by a customer. The outcomes of a design process, at least in NPD, are specifications of the physical geometry, materials, operating system, and manufacturing structure of an engineered product. Design is particularly effective at inferring geometry for a requisite functionality, hence often expressed in drawings, but is capable of defining internal structure in other ways too, including principles of operation and assembly. There may be more than one design solution. The design methodology is also valuable when the problem is over-constrained or the requirements are conflicting. In these cases it tends to offer a range of solutions, which differ by the criteria they preferentially satisfy. One particular design solution may satisfy more of the constraints than other solutions, and is then considered to have high fitness. In this case we apply the design methodology, but the functionality that we seek to support is the observed behaviours of physics. The outcome we get is a design for the physical features and operating principles of particles. In other words, if particles were to have these features then we can explain the (observed) functionality.

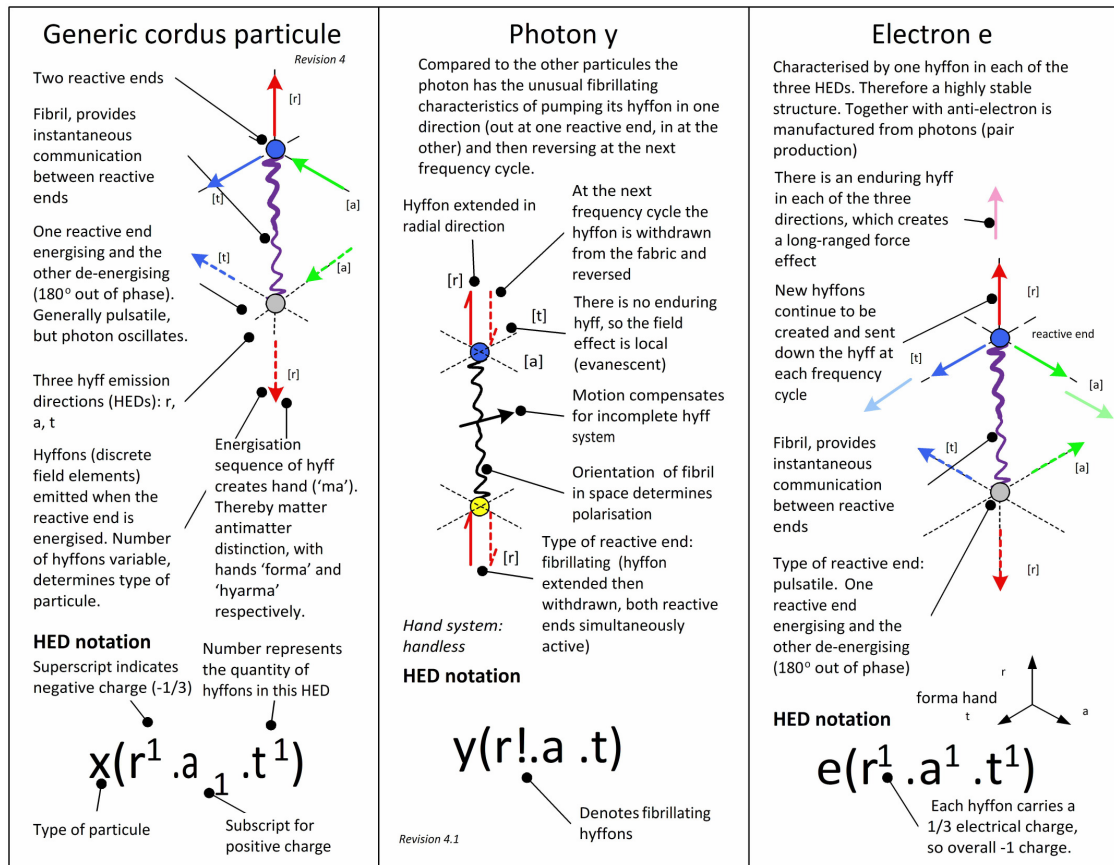


Figure 1: Cordus models for the photon and electron. The basic cordus structure is shown, including reactive ends, fibril and hyff. Also shown are the different characteristics of their hyff pumps: oscillating and fibrillating. Underneath is the shorthand representation of the field structures using Cordus HED notation. It is the number and nature of the hyffons that determines the externalised behaviour of the particule. This is because these hyffons interact with those of other external particules and forces result. Note that the fibril provides instantaneous coordination between the two reactive ends, and is therefore superluminal. Hence Cordus is a non-local hidden variable solution. The photon has a fibrillating pump that only shuttles energy outwards and then immediately afterwards brings it back inwards, whereas the electron consistently pushes hyffon (force fragments) outwards in a pulsating manner. Both cordi therefore have a frequency, but the difference is what they do with it. All other matter and antimatter behaves like the electron, though the hand of the hyff is inverted for antimatter, and the direction of pumping is reversed for positive charge.

While such a solution may seem precluded by the Bell-type inequalities [2, 3] there is reason to believe those constraints are questionable [4, 5] and indeed this proposal claims to falsify them [16]. This solution has wider efficacy, e.g. it also derives basic optical laws for reflection and refraction [15] and explains a variety of other phenomena, see Appendix B. The Cordus explanations for coherence and entropy are also given there, and are relevant to understanding the arrow of time.

Cordus offers a solution not only for the inner contents of a particle, the hidden variables, but also predicts how its discrete fields operate. Consequently it goes beyond conventional NLHV solutions, such as the de Broglie-Bohm model [17]. It is the conceptual coupling between the discrete fields and the internal structures that gives Cordus the power to explain effects that other physics cannot.

5 Approach

The method used was a logical one: to extend the Cordus principles to see what they implied about time. We acknowledge the inherent risk that we might be extending a fundamentally flawed concept. Nonetheless this is worth attempting for the potential to gain new insights. Also, it is a useful test of whether the Cordus conjecture reduces to absurdity when taken to logical conclusions. So far the conjecture has demonstrated a high degree of logical consistency in its ability to explain a wide range of phenomena within a single coherent framework, and it would be interesting to see whether time breaks it.

Our approach is as follows. Accepting that time dilation does occur, and accepting also that atomic clocks do show a physical representation of that effect (as opposed to some other effect), then it is a reasonable assumption that at least the ticks of time are really represented in the mechanism of the clock. Although that mechanism is uncertain, we accept that it involves transient atomic behaviour, and therefore the ticks of time are associated with atomic events. A continuation of this line of thinking and the application of design principles, which we do not detail here, leads to a novel theory for time, which is presented below.

6 Results

Our design method results in a specific theory for time. Thus we suggest that if time were to be constructed as follows, then it is possible to accommodate all the existing perspectives and also answer several of the troublesome ontological questions about time. This cordus theory of time therefore has high fitness. It also has high coherence in that it is logically consistent with the rest of the proposed cordus mechanics. The theory does have some unexpected implications and makes some falsifiable predictions, which are discussed.

The results suggest there is a hierarchy of time, with the physical size of the body being the main scaling factor, and we present the results in this order, starting at the fundamental level and building up to the macroscopic level and onwards to the human perception of time.

6.1 Fundamental Time: Frequency oscillation of the particule (level 1)

The fundamental tick of time, in the Cordus theory, is the frequency of the particule, which is identified as the cycle of re-energisation of the two reactive ends. Cordus provides a specific internal structure for particules, hence a physical explanation for frequency [18]. Thus assuming the

previous Cordus lemmas regarding particule structure and frequency, we then explain fundamental time as:

Fundamental Time, at the level of the individual particule (e.g. electron), is the frequency of the re-energisation cycles of its two reactive ends.

There is a fundamental tick of time for each particule, and this affirms the QM perspective of time. Particules with greater masses or energies have higher frequencies, and therefore tick faster. Thus there is no universal time in this Cordus theory, but rather a unique time for each particule.

These relationships are summarised in Figure 2, which shows the functional situation in integration definition zero (IDEFO) [19] representation.

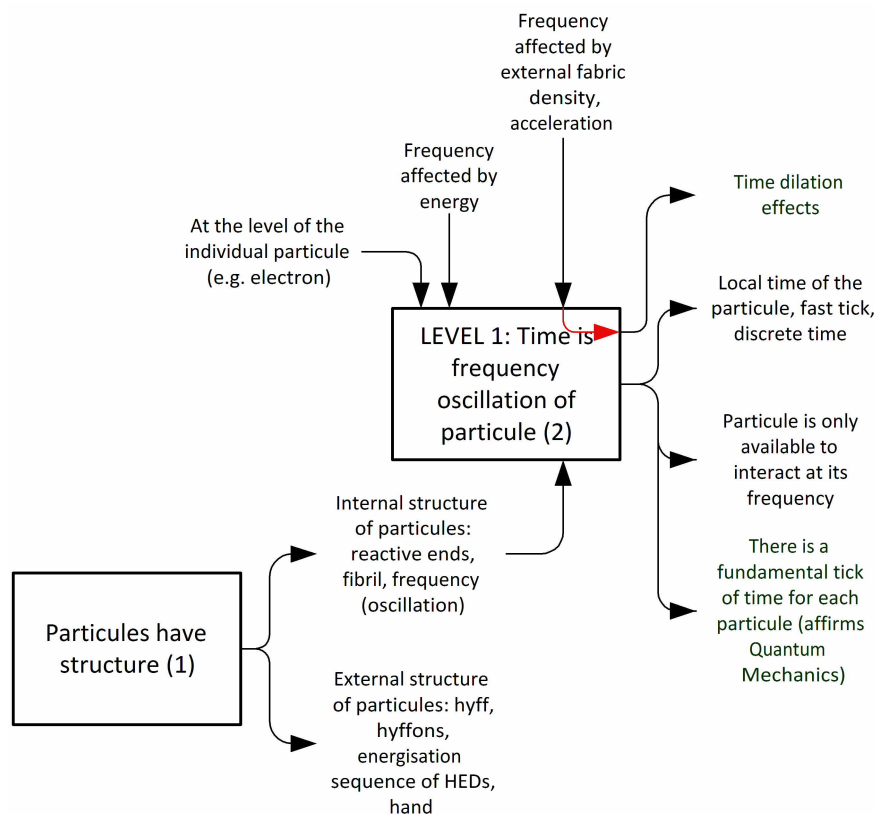


Figure 2: The Level 1 Cordus theory for time is that the cycle of re-energisation of the two reactive ends, at the frequency of the particule, comprises the fundamental tick of time. At this level time is reversible. The diagram represents the causality whereby particule-structure and external events affect the tick of time for that particule.

Linking time to the re-energisation cycles is important because the particule is only available to interact with other particules when it is energised.⁶ When a reactive end of particule A is energised it issues

⁶ This Cordus concept of interaction at the clocking frequency arises because the reactive end, of which each particule has two, only does anything like move or exert force, when it is active. When it is de-energised it is non-reactive. The faster the clocking frequency, the

discrete field forces (Cordus: hyffons). These are propagated outwards at local fabric speed c , the speed of light. The hyffon carries the electromagnetic-gravitational field, which therefore is also discrete, and also carries the strong and bonding forces. These fields & forces inform neighbouring particles B, even remote ones, about the state of the basal particle A. So remote particle B moves in response to the fields from A. Likewise B emits its own fields, and some of these are intercepted by A. Thus particle A responds to fields & forces from the external environment, and this response occurs when its reactive ends energise. Thus the periodic re-energisation of the reactive ends is a mechanism whereby particles communicate with other particles and respond to their forces.⁷

Time is therefore fundamentally an attribute of matter, particularly its frequency, as opposed to being an external dimension or imposed variable. Every particle transmits its time signature into its surrounds, in the form of its discrete field elements, and is only available to interact with other particles then.

6.2 Assembly Time

The Cordus conjecture suggests a particular multi-level interpretation for time. In this construct, time at the fundamental level is generated by each individual particle, and is associated with the frequency of the particle. Of the different times within the Cordus theory, this ticks the fastest. However, particles will generally not have identical frequencies, and even like particles with different energy or in different situations will tick differently. Also, particles are more commonly, and more usefully from our perspective as inhabitants of the universe, bonded together in atoms, molecules, crystals, organelles, and living bodies. In the Cordus theory we refer to this as 'assembly', and the parts as 'components' or 'subassemblies' as appropriate.

Time depends on the level of assembly of matter

Therefore if time fundamentally exists at the level of the individual particle, then time also exists at the level where those particles are assembled, though the nature of the time might be different. Thus the next lemma in the Cordus theory is that time depends on the level of assembly:

more interactions the particle can make. If this concept seems strange, it may be helpful to consider the analogy of a digital computer, which also performs interactions more intensely when provided with a clock of higher frequency.

⁷ 'Force' is not quite the right word to use at this level, since the Cordus concept suggests that the mechanism is geometric displacement. The force interaction is proposed to be a synchronisation effect: the incoming discrete fields cause the recipient reactive end to energise slightly closer (or further as the case may be) than it would otherwise. Thus there is a prescribed geometric constraint on the location of re-energisation, i.e. displacement, and this Cordus suggests, is what we perceive as force at our macroscopic level. To this way of thinking the EMG field forces are therefore the strong interaction writ remotely, since they are all HED synchronisation effects. Bonding is a medium range application of the same mechanism, and the strong force within the nucleus is a close-range application.

Time depends on the level at which the assembly of matter occurs, being fastest for individual particules, and slowest for more complex assemblies (later identified as decoherent bodies bonded by electric-magnetic-gravitational-bonding forces).

Thus there is another level of time after the fundamental, and this is caused by the interactions of multiple particules in close assembly. This interaction occurs since each particule emits discrete field elements, and these interact with neighbouring particules, either strongly as in bonding, or weakly as in macroscopic fields. The Cordus theory also provides the mechanisms for these effects [20]. Next, we explore the different ways that particules can be assembled, namely coherent and decoherent bonding, a mix of the two, and remote fields. We take the simpler case of coherent matter first, and provide physical explanations for these states using the Cordus conjecture.

Time at the level of coherent matter (level 2.1)

At suitably small scales all matter becomes *individually* self-coherent, and Cordus predicts this boundary is at or below the molecular level [21]. Thus electrons, protons, and atoms are always *internally* coherent, that being a necessity for their stability.⁸ The lemmas of the Cordus theory explain coherence as multiple particules being in complementary geometric locations and frequency states [22]. In other words, the particules, which have two ends, share the location of their reactive ends with those of other particules and thus form paired or network structures, hence domains.⁹ Since frequency is involved, and all the particules are synchronised, this has implications for how time ticks within these bodies. Thus we anticipate another form of time for coherent bodies, and this is similar to fundamental time but on a wider scale:

Coherent assembly time is the common frequency cycle of re-energisation of the particules within a coherent domain of matter.

Thus for a coherent body, e.g. superfluid, Cordus predicts that the whole body has one synchronised time frequency (all the particules beat together), and that frequency does not depend on the number of particules in the assembly. Also, the phase of the particules will also be complementary. These specific time-characteristics may be testable and falsified. This functional situation is shown in Figure 3.

⁸ Bonding stability, strong-force, and coherence are simply different manifestations of the deeper synchronous HED mechanism, according to the Cordus perspective.

⁹ In this context a domain is a volume of massy particules, and it may be within another body or its own body. The point is that a decoherent body may, according to the Cordus theory, contain domains that are coherent.

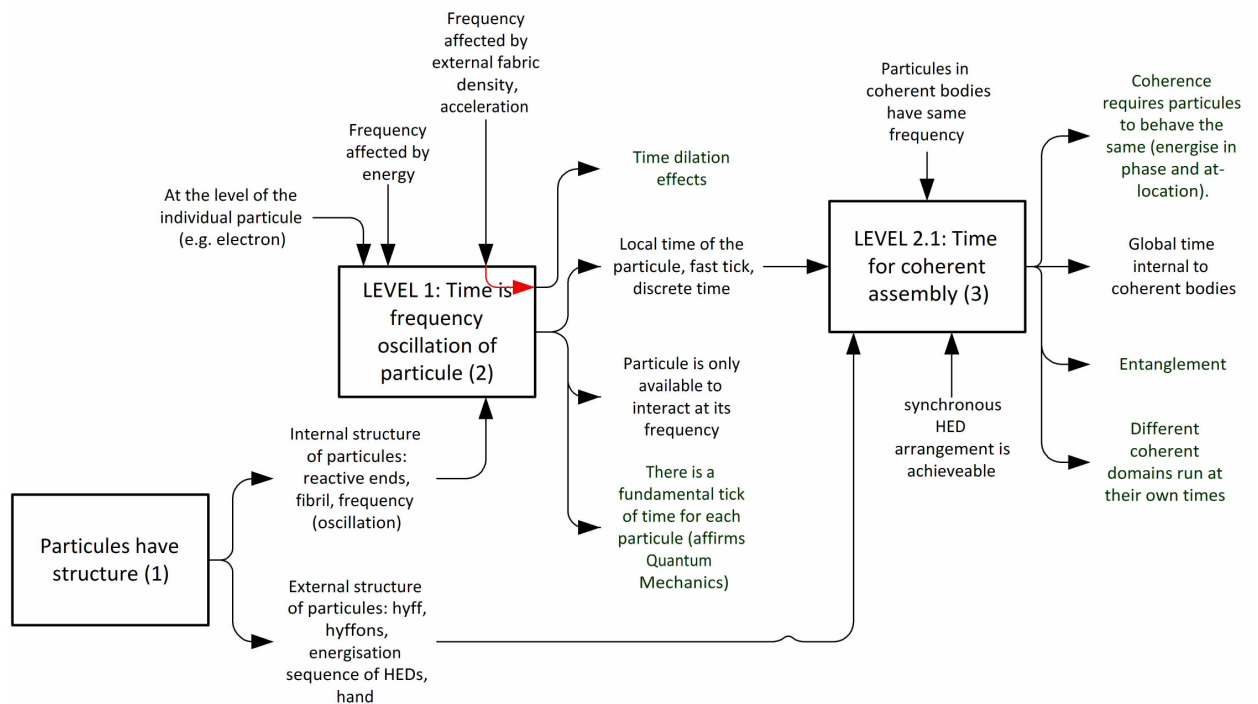


Figure 3: The Level 2.1 Cordus theory for time in COHERENT assemblies of matter.

Cordus thus affirms the QM concept of global time, though limits the concept to coherent bodies.¹⁰

We also anticipate that at this level the arrow of time does not exist in principle, though it may in practice. This is because a coherent body can have all its internal particules put back in their original place, i.e. change is reversible. Of course this requires that we accept that identical particules are indistinguishable and can substitute for each other, which seems reasonable. This might be possible in simple systems of only a few coherent subatomic entities, in prescribed states, and a stable external environment. If the particules can only be in a few states, then their behaviour is effectively reversible.¹¹ There is still interaction at frequency cycles, i.e. time, but it no longer has an arrow pointing away from past states. So time, and the arrow-of-time are not synonymous at all levels. The self-stability of the proton is an example: it experiences time, but there is no arrow of time forcing it into a different state.

¹⁰ When critically evaluating quantum mechanics from the perspective of the Cordus conjecture, it becomes apparent that the failing of QM is its inability to comprehend that it only applies to coherent situations. Thus we suggest that QM is not a universal physics but rather a special-case physics for coherent bodies only. One of several places where this failing is evident is QM's agonising over Schrodinger's Cat: its wondering why cats do not actually behave like that, and its dalliance with desperate metaphysical solutions (many worlds theorem), show how QM is unable to cope with decoherent matter. A complementary failing is QM's inability to explain why it does not scale up to the macroscopic level, or where its own boundaries of applicability might lie. To Cordus it is obvious why real cats do not display superposition. Also, Cordus offers an explanation for QM's scaling problem, including a prediction of where the boundary lies (<http://vixra.org/pdf/1107.0019v1.pdf>)

¹¹ If an assembly only has a few unique states, i.e. positions that its atoms can be in, then the chance of reverting to that state is higher. This is a type of Markov process.

However it is impossible to fully control the external environment of the fabric and its perturbations. Note that even in the simplest situation of two coherent interacting domains, there is still the perturbation of the fabric hyffons that they both feel, i.e. the rest of the particules in all the accessible universe affect the two domains. If these external forces are strong enough, they create additional geometric positions for the system to move into. As soon as the system moves into one of these, it will then have additional states available, resulting in a decreased chance of returning to the original state. Furthermore, by moving into a new position, the system's contribution of hyffons back into the universe also changes. So the system also changes the universe, hence further difficulty getting everything back into its original state. The decay of the free neutron is interpreted in Cordus as an example of a stable case slipping into decoherence under external disturbance [23].

Time at the level of decoherent matter (level 2.2)

Macroscopic objects at our level of existence are decoherent as a whole, which Cordus explains as caused by the homogeneity of composition and being too warm to be coherent [21]. Cordus suggests that there is an assembly tree to any macroscopic object, where the sub-components may be a mixture of individually coherent and decoherent domains. However as the assembly grows in size and diversity of composition, so a synchronous HED arrangement becomes impossible to negotiate by the protagonist particules, and thus decoherence arises. For example, even if individual molecules are indeed coherent then an aggregation of different molecules can be decoherent as a whole.

Single particules are automatically coherent. These, and any coherent domains, manifest their properties at their own internal frequency. These properties are their fields (electrical, magnetism, and gravitation), the orientation thereof, and the two positions of the reactive ends. The fields themselves are discrete pulses (hyffons), and the frequency of production is very high. However other neighbouring domains of matter of different composition, even if independently coherent, do not perceive the individual hyffons of the first domain in their discrete synchronous form.¹² Instead they perceive each other (experience each other's forces) as a disjointed rain of field forces.¹³ Thus we anticipate a different type of

12 The two domains would need to have the same frequency (hence mass characteristics) for the individual hyffons to be apparent, in which case they could move into a bonded state of assembly, i.e. become one coherent body. Thus there is no problem with independent coherent domains merging to form larger domains, but it requires homogeneity of composition (to satisfy the mass and frequency requirements).

13 Those emitted discrete field elements (Cordus: hyffons) propagate indefinitely out into the universe at light speed. They are not consumed by their interaction with other bodies, hence gravitation cannot be shielded, and cannot be recalled. So the simplest change of position of one electron has a profoundly irreversible effect on the rest of the universe. The ordered regime only applies within coherent assemblies. This tendency to irreversibility applies in several situations: to the interaction between a coherent body and the universe at large; to the interaction between multiple independent but individually coherent bodies; to the interaction of decoherent matter with the universe or other matter. The more numerous the participating domains (coherent masses or decoherent particules) the

interaction between particules in decoherent bodies, and we interpret this as another, and slower, level of time:

Decoherent assembly time is the tick of interactions within an aggregate body of coherent and decoherent sub-bodies. This tick of time is much slower than the fundamental time, and derives from individual particules responding as they can to the rain of field forces.

This is an important concept since this type of time dominates organic chemistry, and hence also our human perception of time. The concept is also important as it explains why the irreversibility of time occurs, as described next.

Arrow of time

Decoherence causes a time delay to be inserted into the functional interaction of two or more domains – whether or not those domains are individually coherent. This is because the frequencies differ, so the faster oscillating domain will have to mark more ticks before the slower responds. Since there is geometric separation, however small, then the finite speed of field propagation (c , speed of light) adds a further time delay. Consequently the one domain generally has done something different, e.g. responded to a third domain, before the second has fully responded. Therefore getting domains back into their initial positions becomes unlikely and statistically impossible as the number of participating domains increases. So what happens stays happened, and does not naturally self-repair. We sum this up as follows:

Decoherent assembly time is irreversible, hence the arrow of time arises at this level. This is because the interaction between subassemblies is practically irreversible due to intervening changes, propagation delays, and the complexity of large number of participating particules. This is also where and why entropy arises.

Hence classical mechanics and decoherence arise at the same point in the assembly tree of matter. The macroscopic perception of time arises at the same point, as does entropy. See Figure 4.

greater the tendency towards irreversibility. So the universe is practically irreversible even if the individual physical interactions are deterministic.

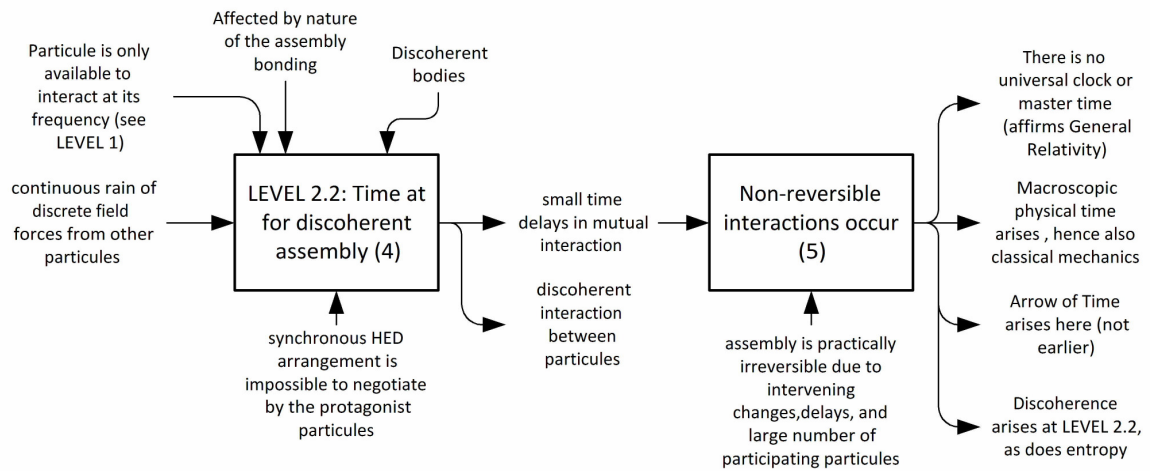


Figure 4: The Level 2.2 Cordus theory for time in DECOHERENT assemblies of matter.

While reversibility seems feasible at simple levels, we never see this for macroscopic bodies. This is because such bodies are decoherent. More accurately, their relationship with their external environment is decoherent even if their internal bonding arrangements are coherent. Thus we note a derived lemma:

Macroscopic bodies invariably have decoherent relationships between them. Such bodies, regardless of whether they are internally governed by coherent or decoherent relationships (bonds), interact inelastically with their environment, in that such bodies do not return to precisely their initial states. Inability for one body to return thereby means that all the other bodies in the accessible universe cannot either, because the fabric of background field hyffons has been changed.

Long-range interactions through the fabric

Up to here we have been examining particules that are in some close assembly relationship due to bonding. However there is also the case of bodies that interact with each other at a distance, through the electromagnetic-gravitational (EMG) forces. To help solve this we apply principles from the existing Cordus theory for unification of the forces [24, 25] and the content of the vacuum [26].

Any one particule A receives discrete field hyffons from all the particules (many Bs) in the accessible universe (past light cone). Space within the universe is therefore filled with a mesh of discrete fields in transit, which in the Cordus theory is termed the fabric [26].¹⁴ Thus the Cordus time theory predicts there is another variant of time, at the level of

¹⁴ The Cordus fabric is not made up of particles, and therefore is not a matter aether, but it is a transmission medium nonetheless, since the photon travels in the fabric. The Cordus conjecture thus affirms electromagnetic (EM) theory and its concept of a medium. Cordus also provides physical interpretations for the electric and magnetic constants of free space, which are otherwise ontologically challenging to EM theory. We also note that the Cordus fabric is a relativistic one, yet the theory suggests that the speed of light need not be constant but instead depends on the fabric density.

macroscopic bodies subject to EMG interactions, and we call this the fabric time. It is a subtype of decoherent assembly time:

Fabric time is the mutual interconnectedness of matter particules spread over three-dimensional space. This occurs via the fabric, comprising discrete field forces (hyffons) for electric-magnetic-gravitational interaction. Not strictly a time, this is rather a coordination of events across space.

In this theory the fabric, and the EMG fields it carries, causes a connectedness between particules. They respond together, even if in a slightly delayed manner as their separation increases. There is therefore a coherence and smoothness to the interaction between particules, mediated by the fabric. The resulting interaction stitches together three-dimensional domains of space (matter and vacuum-fabric) into a macroscopic collated time. This level of time passes more slowly, due to the many tiny delays required for particules to react to each other, given the dissimilar-frequency and phase-differences between the particules. There is no real tick at this level, but rather a one-directional mutual causality. This, Cordus suggests, is where the arrow-of-time arises, and what general relativity perceives as spacetime. This is also the macroscopic level of physical time, and hence where our perception of time first arises.

This Cordus concept of 3D fabric affirms the general relativity perspective of spacetime. It also provides an ontological answer to one of the earlier questions [13]: it suggests that spacetime has a quasi-substantial status (comprises hyffons) but has no universal time-signature per se, and mainly represents merely the relationships between bodies.

According to this theory it is important to differentiate between the relationships within and between domains when considering coherence. This principle is illustrated in Figure 5.

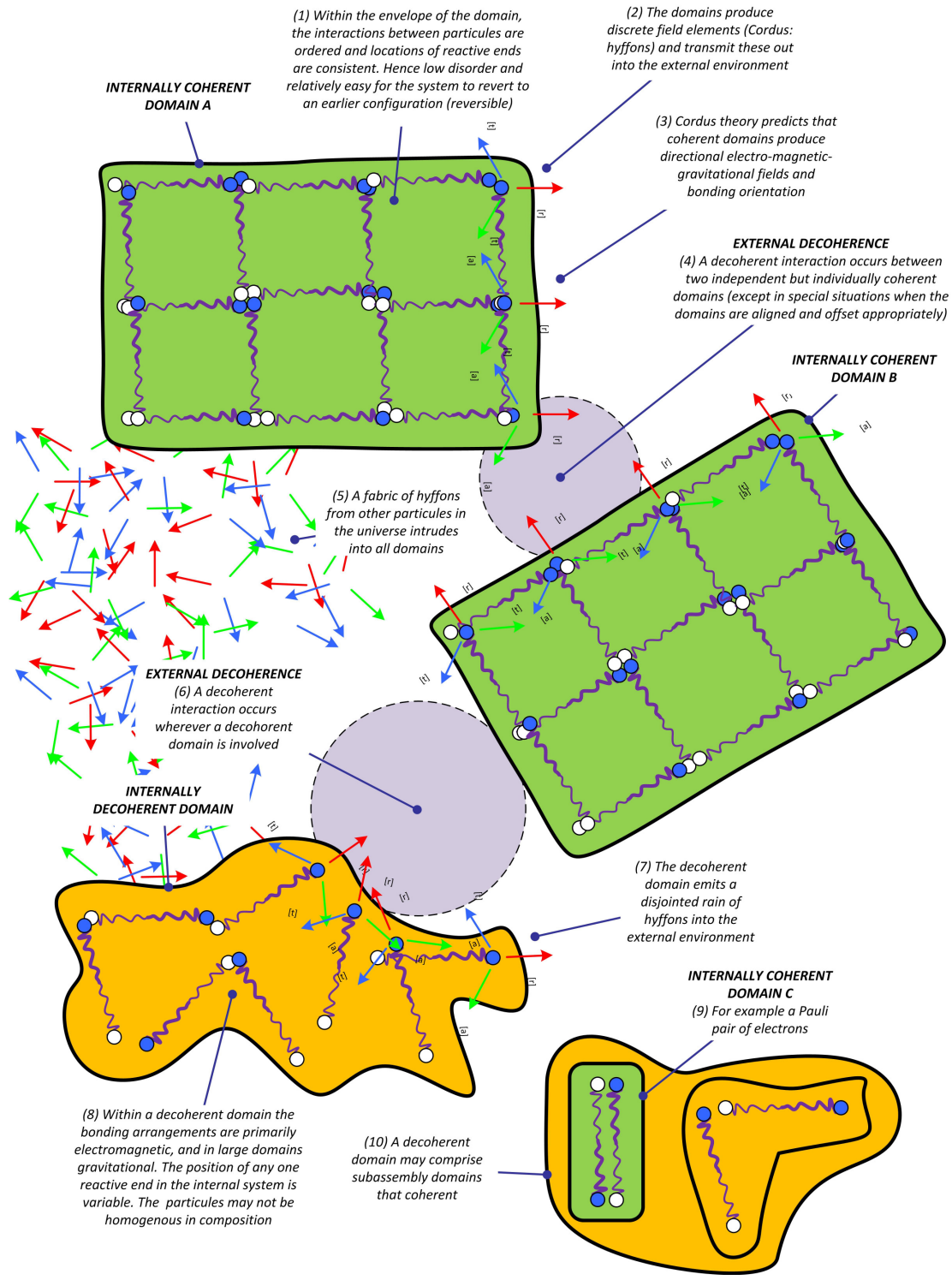


Figure 5: Coherence is a state of coordinated positional relationships within a domain. However even these bodies are subject to perturbation by the hyffons of the fabric. Note that the relationship between coherent bodies is not necessarily or even typically coherent. Decoherent domains, which may contain coherent subassemblies, always have decoherent external relationships.

Time-dilation explained

Furthermore, the Cordus theory of time provides a mechanism whereby the external environment can push back in and affect the frequency of the particule, and thus an explanation readily arises for time-dilation. The proposed mechanism is as follows. An encounter with greater fabric density causes the frequency of a particule to slow down, hence time runs slower. This is because the high density of external hyffons makes it difficult for the particule to emit its own hyffons > emission is retarded > energisation of reactive end is delayed > frequency lengthens. It is known from general relativity that a body experiences time dilation in any of the following three situations: relativistic velocity, or acceleration, or in a high gravitation field. According to Cordus, all these are situations of greater fabric density: the first because the fast-moving particule is at a speed approaching that of the fabric itself and therefore emission of the particule's hyffons is resisted (from the perspective of the particule, the external hyffon fabric is saturated), the second because the accelerating particule emits hyffons which it then moves into, thus creating its own locally high fabric density, and the third because high gravitation field is intrinsically a high external fabric density.¹⁵

6.3 Organic-Life Time: The speed at which chemical interactions occur in decoherent bodies

Having differentiated between the different types of time at different assembly levels, and having identified how time works for decoherent bodies, we are now ready to describe the Cordus theory for time at the higher levels, including living creatures.

This is now the third level of time. Our own physical bodies consist of cells and tissues which are decoherent domains at any level which our unaided senses can perceive, and coherent domains like electrons. Of course at some finer level even the decoherent domains comprise coherent particules, but the point is that such assemblies of matter operate with *decoherent assembly time*. We anticipate that the only coherent domains within physical bodies are at the molecular level and smaller, possibly as large as organelles [21]. The actions of the cell are not generally superluminal, as is possible within a coherent domain, i.e. entanglement is only possible within coherent systems.¹⁶ Thus the Cordus theory states that there is a slower level of time which is based on the speed at which chemical reactions can take place, and this governs the physiology of organic life:

Organic-Life Time, at the level of an individual cell, consists of the fuzzy aggregation of the discrete fields of the many individual coherent particules (electrons, atoms, molecules) and decoherent sub-components (clumps of molecules, organelles).

¹⁵ Electric and magnetic field density does not affect time in the same way as gravitation, and Cordus suggests this is because the time phenomenon is primarily connected to the mass, hence energisation sequence of the three HEDs rather than the behaviour of a single HED as in the electrostatic and magnetic interactions.

¹⁶ We leave as an open question whether in special situations there may be entanglement occurring in cellular structures or between cells.

'Fuzzy' because the discrete field hyffons are not individually distinct. Chemical transport within the cell occurs as and when the sub-components are able to interact. Thus the cell takes much longer to achieve anything (more frequency ticks) than a simple sum of the times required by the coherent subcomponents.

The process of human thought takes time. The photosensitive chemicals in the retina need frequency cycles to react to incoming photons, the electrons need frequency cycles to transit down the nerve fibre into the cortex, the neurotransmitter molecules need more frequency cycles to interact with other cells. Thus it takes time for the brain to assign a meaning to what is seen. At the level of organic life, time is based in chemistry. We represent these relationships in Figure 6.

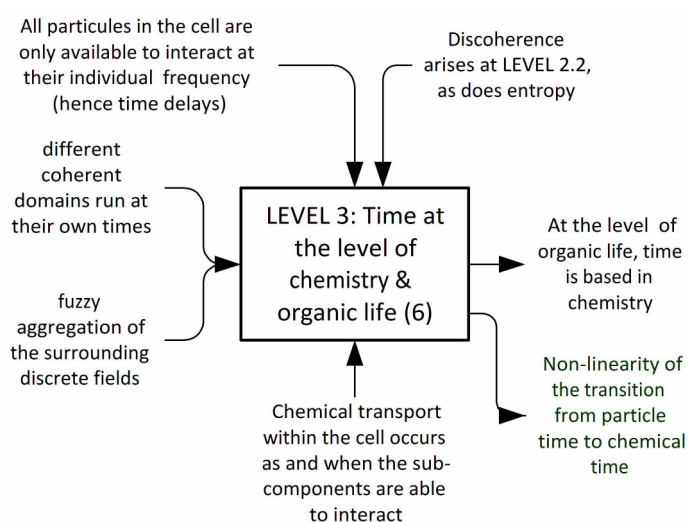


Figure 6: The Level 3 Cordus theory for time in organic chemistry.

6.4 Cognitive Time: Human perception of time phenomena

Our human perception of time is the next level up, the fourth level of time, and is a construct of the cognition. The irreversibility of cause-and-effect creates a physical arrow of time. This is not merely a cognitive perception, but a real physical flow. The brain then constructs a cognitive meaning for the one-wayness of time. Proprioception, and the underlying neural systems that support it, creates the personal arrow of time. We think, then our limbs move, then our peripheral nerves confirm the new position, likewise the eyes confirm and calibrate the proprioception. To the cognitive system, the arrow of time is the immediate and predictable sequence of cause-and-effect in the neuro-muscular-skeletal system and the immediate surrounding environment.

The brain need not have a global atomic/molecular clock. It only needs a subjective counter of events from which to infer time.¹⁷ Our cognitive

¹⁷ Exactly what 'events' the brain counts to infer passage of time is a wider mystery, and Cordus does not specifically address this cognitive question. Nor does it explain what the biological mechanism might be for accumulating the sense of elapsed time. If 'events' include external stimuli and internal

quantification of time is very rough, and varies with the situation. Nonetheless we perceive time as flowing. This is because it does indeed take chemical time for us to accomplish anything, even thought, and especially motion. Also, those interactions are all irreversible, so there is no going back. The human perception of time is therefore a cognitive construct that we overlay on chemical time, and that in turn on the frequency of matter. We represent this in Figure 7.

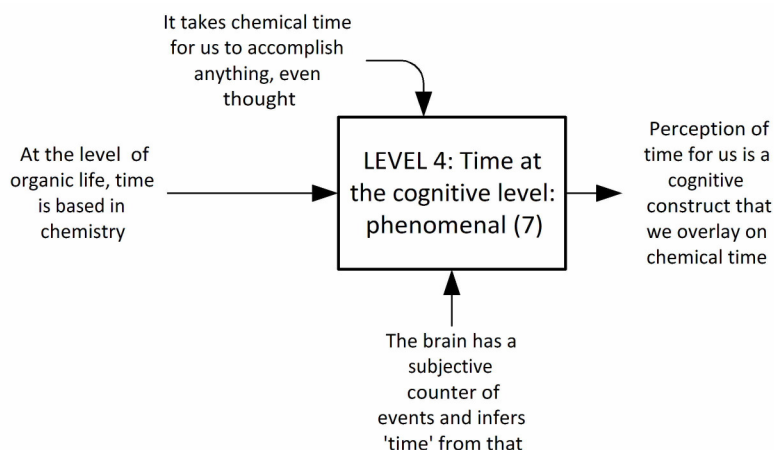


Figure 7: The Level 4 Cordus theory for the perception of time.

We might perceive our thoughts to be effortless and instantaneous, and the resulting movement of our body to be immediate. We can perceive, and respond within, tenths of a second. But the deeper clocks of the particules of matter beat so fast as to be beyond our sensation. We also perceive that time flows in one direction: forward. There is an obvious arrow of time, whereby cause precedes effect. This too arises from the non-linearity of the transition from fundamental time to chemical time. We also perceive that time is universal: that what happens to me is also how you see things happening. So when we meet and I extend my hand and voice a greeting, I believe that you too hear those words, and the touch of the hands is real. Clearly this is the case, (except in the most extreme philosophical interpretations), because when meeting we do indeed see the smile and confirmatory signs that we expect. To sum up:

Cognitive time, or the human perception of time, is a cognitive construct of the order in which we experience phenomena, based in turn on a neural representation of chemical time, and the arrow of time (irreversibility), both of which arise at a deeper level. The coordination provided by the fabric ensures that there is a consistency of experience between two people, hence personal interaction is a real common experience, and time is perceived as universal.

markers (perhaps physiological depletion) then there is no particular difficulty explaining why perception of time is so flexible. However, a cognitive model is beyond the present scope.

Cognitively we struggle to interpret events when the sensory signals conflict, like echoes in a large room, or time-delay in a long-distance call. The fact that the cognition struggles in such cases is circumstantial evidence of a cognitive model for the arrow of time. Worse, if one person exists at a faster (or slower) pace of time, as in time-dilation, then the cognitive model struggles and we perceive the situation as bizarre. That our feet age slightly differently to our head is only strange because we expect, cognitively, that time be continuous and universal, as is usually our experience.

Philosophical considerations

With the irreversibility theory given here, we can explain why there is a past, and with the fabric theory we can explain why there is a unique present.¹⁸ Thus the universe only need have a single possible past. Also, the present moment is a consequence of that single past, and will evolve into a single future, i.e. there need be only one universe that we all share. Regarding the philosophical question of what is the NOW (the present moment), we suggest it is a cognitive effect associated with consciousness, memory, and the process of thought.

6.5 The connectedness of time

Finally, we examine the question of how multiple bodies interact, and how the coordination arises. We have already identified that there is no master clock, but if that is lacking then we still need a coordination mechanism. There is a connectedness of phenomena that are at different geometric locations. It *seems* that spacetime is continuous, because it *seems* that it is possible to coordinate the two phenomena in time. We show that the two phenomena are linked, because they share the same fabric.

Any communication between two objects is a result of photons, or massy particules, or fields, and these cause positional constraints on the other, i.e. the geometric location of the reactive end is affected by the communication. Thus all force is ultimately prescribed displacement of position of the target particule. A phenomenon that occurs in one volume of matter, be that combustion, noise, motion, etc, thereby communicates that to other matter around it. Consider one volume to be my body: my speaking transmits forces to the volume of air immediately around me, which in turn propagates the dynamic displacement throughout its bulk, so that the membrane in your ear is displaced, and you hear the sound.

In general the phenomenon is that one volume of matter causes an effect in the second. The interactions at the most basic level all require frequency cycles, so this causes temporal causality. This is a physical

¹⁸ That begs the question of whether or not there is free-will. We see some interesting ideas in there, especially given the concept of the fabric contributing to a 'unique present', plus the Cordus rejection of the many-worlds/multiverse/temporal superposition concepts (rejection not in the sense that we can disprove them but rather than we can demonstrate that we do not need them to form a coherent ontological theory of physics). An obvious initial answer to the free-will question is that it follows the theory for time: that there is no free-will within coherent bodies, but that irredeemable irreversibility grants indeterminism to complex decoherent bodies. We hope to explore these concepts in a future paper.

reality, and is also the basis for cognitive perceptions of time. Thus we infer:

It is not a master clock that accomplishes the temporal connectedness of phenomena that are at different geometric locations, nor does it require continuity of spacetime per se. The piece-wise communication, via discrete field interactions of the fabric, between adjacent volumes of space (matter and fabric) applies spatial consistency to time.

This causality is represented in Figure 8.

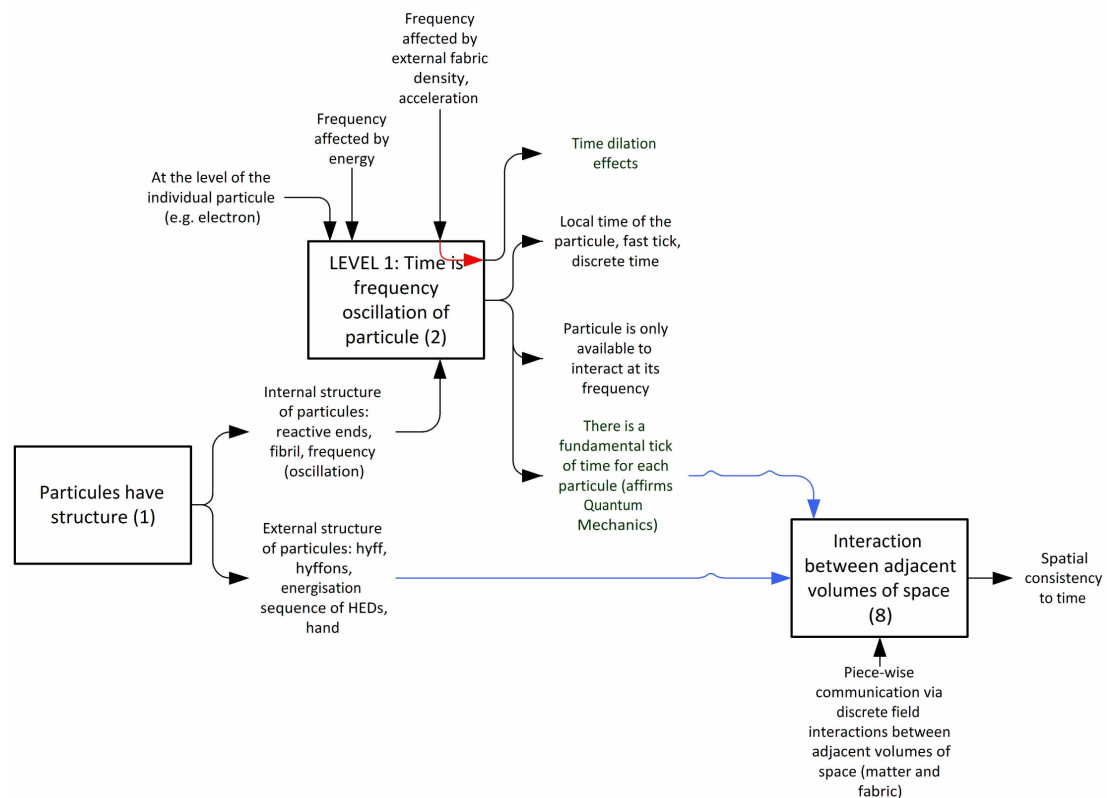


Figure 8: The apparent smoothness of time at the macroscopic level is caused by the interaction between adjacent volumes of space, mediated by discrete fields.

7 Discussion

7.1 Integrative theory

The fundamental time occurs with particles, being its frequency. This is the fastest time, but it also varies with particles. The way particles are assembled determines what frequency the assembly adopts -invariably lower- and how quickly it can interact with other bodies. Thus time at the macroscopic level depends on the nature of assembly of matter. Irreversibility and the arrow of time appear at the level where coherence fails. Human perception of time arises as a cognitive effect on top of the chemical irreversibility of physiology. Thus there is more than one time.

See Figure 9 for a functional summary of the complete Cordus theory of time, showing all the proposed levels.

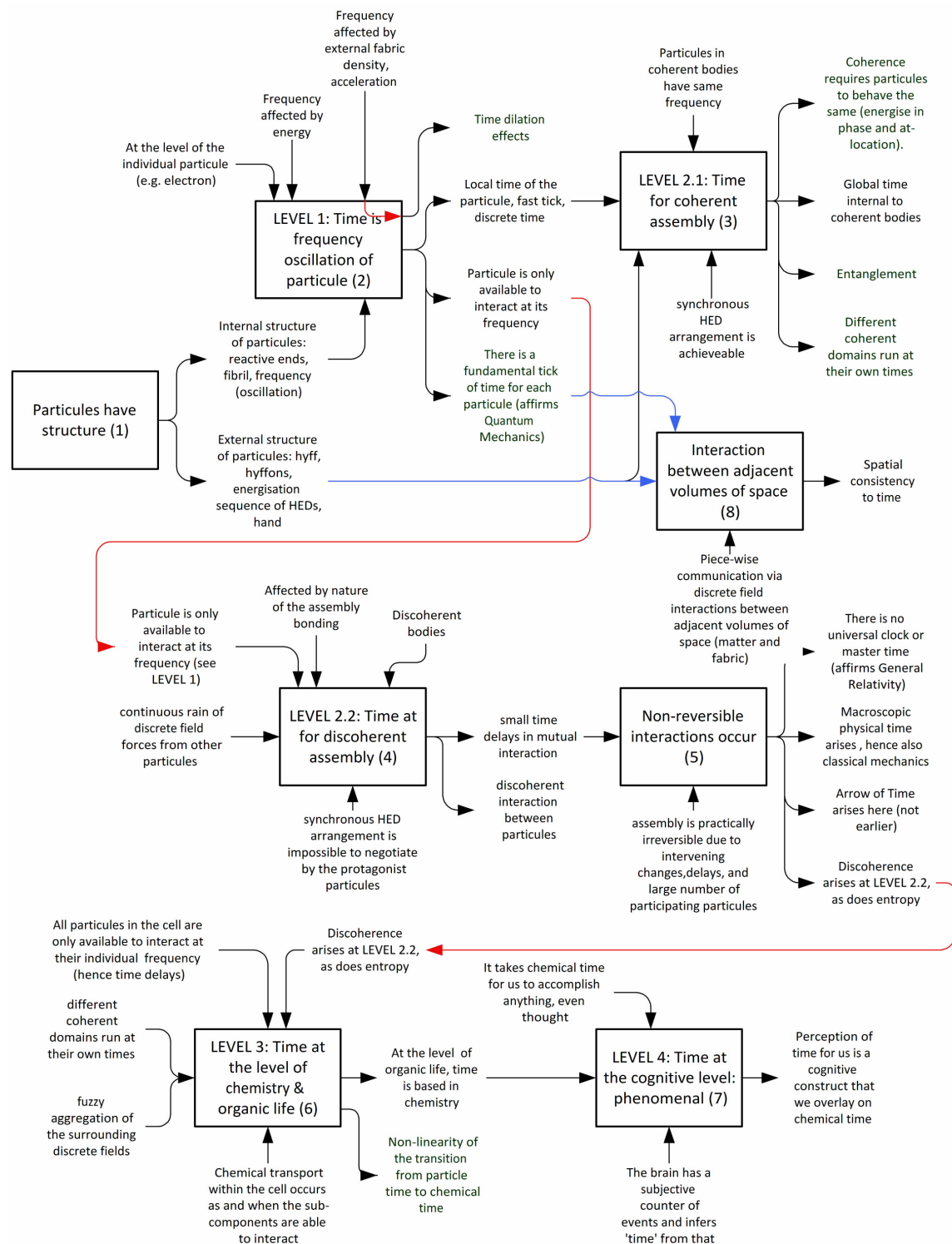


Figure 9: The Cordus functional theory for the different levels of time, and the interaction between the levels.

If the Cordus conjecture is true, then it implies there is a deeper physics that subsumes quantum mechanics and relativity. While existing approaches have tended to focus on extending QM by the addition of

discrete fields, through virtual bosons, these approaches have not yet been successful in solving the many ontological questions those same solutions raise. Orthodox physics relies almost exclusively on mathematical methodologies, and is generally opposed to the hidden-variable argument. So applying design thinking is a foreign idea, and starting the search in the NLHV area perhaps seems like foolishness. We have shown here that other methodologies can yield thought-provoking candidate solutions, and that a certain NLHV solution is not precluded by the Bell-type inequalities and actually has the potential to provide a new physics. Perhaps solutions like Cordus, or similar solutions that others might obtain from application of the design methodology, might give us a better representation of the fundamental principles of physics than QM, EM, SR and GR can do singly or collectively?

7.2 Outcomes

What we have achieved here is a description of how time arises, within the Cordus framework. This work makes several potentially novel intellectual contributions to the physics of time.

The first is the concept that time is fundamentally the frequency cycle of the particule. The implication of this is that time is an emergent property of matter, is not a dimension, is not continuous, and there is no master clock or universal time. The general relativity concept of 3+1 spacetime is denied in principle, though accepted as a practical approximation. The idea that particles have frequency is not new, being known for matter as the de Broglie frequency, and for photons as wavelength, colour and energy. However Cordus makes the novel conceptual contribution of providing a NLHV solution with a physical concept for frequency, as opposed to QM's treatment of it as an abstract 'intrinsic' variable, then linking frequency to time.

The second contribution is the novel idea that time depends on the level of assembly of matter, from the fundamental time caused by the frequency of particule re-energisation, through to the time of assemblies of decoherent domains of matter, and onward to time at the level of organic life. The level of assembly concept has descriptive power in its ability to reconcile multiple attributes of time within one framework.

A third contribution is an explanation of where and how irreversibility, entropy, and the arrow-of-time arise. According to the Cordus theory, these all arise at the boundary between coherence and decoherence. Complementary to this is an explanation for why QM predicts time-symmetry, i.e. reversibility: because this is true for simple coherent systems. What is interesting here is that there is only one arrow-of-time which scales from the thermodynamics to the human perception (as opposed to many separate arrows). So this is a parsimonious solution.

The fourth contribution is a set of explanations for how the time as measured by atomic clocks transfers to the world at large. By ascribing fundamental time to the re-energisation frequency of particules, the Cordus theory provides the necessary explanatory mechanism. So the

time that we humans perceive in a cognitive sense is consistent with that measured in an objective sense by atomic clocks and other instruments. This also explains how time-dilation works. The frequency of the particule is the common cause for both the rate of time as measured by clocks and the rate at which chemical process (such as thought and aging) occur. Key to this understanding are the complementary Cordus theories for the vacuum (Cordus: fabric) and force unification. This part of the theory also explains how time begun.

Fifthly, a seamless connection is provided between the various physical levels of time, and the human perception of time. This solves another ontological problem concerning how, if at all, our human perception of time connects to the physics of time. Thus time starts out as a frequency property of particules, and so it is appropriate to measure time in terms of the frequency-dependent activities of individual atoms (e.g. atomic clocks). At macroscopic levels the irreversibility arises and this drives the physiological irreversibility, and ultimately a cognitive perception of time.

A sixth contribution is some answers to philosophical questions about how the perception of the now arises, whether time is a dimension, whether it is infinitely divisible, whether the many-worlds theory is necessary, and whether it is possible to conceive of an atemporal situation.

The seventh contribution is the reconciliation of multiple different forms of time into one single coherent framework. This integrates the apparently conflicting nature of the different times suggested by quantum mechanics, electromagnetic theory, and relativity. Surprisingly, it is not so much that one of these theories is correct and the others wrong, but instead it is shown that they all have a piece of truth. The Cordus theory shows that time is all of particle-based vs. spacetime, relative vs. absolute, local vs. universal. However it is not simultaneously all of those, but rather depends on the level of assembly being considered. We therefore suggest that none of the existing physical theories have got time quite right, even if they are all right in part. Instead Cordus suggests that there is a deeper common causality.

The eighth contribution is not immediately apparent in this work, but is nonetheless significant. It is the large scale coherence of the Cordus theory, whereby it is possible with one framework to provide ontologically meaningful explanations to a wide variety of otherwise problematic phenomena, including wave-particle duality, entanglement, charge-parity (CP) violation, force unification, asymmetrical baryogenesis, and now time. These solutions are conjectural and unorthodox, and their validity is uncertain, yet it is the wide applicability of the underlying cordus principle that is interesting. There are alternative explanations for all these effects, but they tend to be piecemeal and only solve one problem. It is also curious that the Cordus theory accommodates QM and relativity, except in small details and principles of interpretation. This does not prove that the Cordus view is correct, but it does suggest it is a promising direction.

7.3 Implications

We have shown that the Cordus conjecture can explain time, and have therefore achieved the purpose of the paper. The explanations are consistent with those of quantum mechanics, electromagnetic theory, special and general relativity. Importantly, Cordus provides a mechanism whereby the interaction with the external environment causes changes to the frequency of the particule. Neither quantum mechanics nor general relativity can do that, because they lack models for internal structure and discrete fields respectively. As we have seen, the Cordus concepts of frequency, assembly of matter, and fabric are key to this new theory of time. However, the implications are unorthodox in that it suggests that quantum mechanics, electromagnetic theory, Newtonian mechanics, and relativity are subsets and approximations of a deeper causal structure in physics. It remains to be seen whether or not the Cordus conjecture is valid, but if it is then there are some further implications.

Relativity of simultaneity

There are interesting implications in this Cordus theory for frames of reference and the philosophical issues surrounding time. Special relativity (SR) is based on the relativity of simultaneity, that the order in time of two spatially separate events cannot be determined absolutely, but instead depends on the motion of the observer. Thus it is impossible to order two events in time if they occur in different places (hence difference frames of reference). There is no preferred inertial frame in SR. Taken to its limits this suggests that people live in different states of the universe depending on their relative velocity, hence the Rietdijk–Putnam argument and Penrose’s Andromeda paradox [27].¹⁹

¹⁹ Andromeda paradox: Whether this is even a paradox is doubtful, because the two people, A and B, in Penrose’s Andromeda thought experiment cannot know, *at the time of their meeting*, what events are transpiring far away in their difference versions of the universe. So what happens in a far galaxy like Andromeda is unknowable to the people at the time, and any difference in perception of remote events (whether or not the aliens have decided to invade Earth) is likewise unknowable. Therefore there is no contradiction in world-lines at the time of the meeting, and hence no paradox. It only appears to be a paradox to us because in a thought experiment we can ‘know’ what our subjects themselves do not, which is what the aliens are up to. Penrose ponders whether, at the time his subjects were meeting, there was any real uncertainty about that future, i.e. a predetermination type of question. But that assumes that A was already in a version of the universe that was more temporally advanced than B, which is not the case. He was only in version of the universe that would differ in simultaneity from B, *if he had continued* with his motion relative to B. Such velocity would distance A from B, and any communication from A to B would then be limited by light-speed. Or to look at it the other way, person A had not *at the time of meeting B* been able to realise the potential advantage of foreknowledge that his temporal advancement might seem to promise. Nor would he ever be able to do so, since the information on which that knowledge was based (i.e. what decision the aliens had made) could only reach him at light-speed, by which time both he and his acquaintance B would both have moved forward in time (moved on the Minkowski diagram). Nor does B have any ability to change the unfolding decisions of the aliens, because to do so would require sending a signal back to Andromeda which would also take too long (it would only be received by the aliens after they had already made their decision). So while A might appear to have the benefit of advanced information about the alien’s plans, that advantage cannot be realised, and therefore that information cannot be transferred to B either, and B has no real ability to communicate that information into her retarded version of the universe, and therefore has no ability to cause her retarded universe to diverge from that inhabited by A. Therefore she cannot tamper with her retarded version of the universe to

The Cordus theories of time and the fabric affirm SR's principle of the relativity of simultaneity, that time can flow at different speeds for people in different situations. However there are some deeper implications from the Cordus perspective. The first is that, due to light-speed being dependent on fabric-density, there is an additional complexity to the endeavour to synchronise multiple clocks that are spatially separated [28]. Cordus suggests that the only reliable way to synchronise clocks is not by transmitting light signals between them, but by bringing them together into the same place²⁰ at the same time, synchronising them there, and then sending them away again.

The second implication is that time is not an inherent property of space. Cordus rejects the idea of spacetime having a substantial dimensional status comparable to the three geometric axes, and instead sees the fabric as being the relationships between bodies. Complementary to this is a third implication, that time is a property of matter rather than space. Recall that the Cordus theory is that the fundamental level of time is the frequency oscillation of the particule, and the assembly of multiple particules.

This has a further implication that each assembly of matter has its own time (SR: frame of reference) which via the fabric blends discretely into that of other neighbouring matter. Hence the connectedness of the cordus fabric, which provides a mechanism whereby spatially separated bodies appraise each other about their position and state. This corresponds loosely to the GR concept of a smooth spacetime, except that the Cordus fabric is made up of discrete field elements that only appear to be smooth at the macroscopic level. A fifth implication is that spatially separate bodies have their own time, and Cordus provides a mechanism whereby that fundamental time aggregates into the physical behaviour of a clock. So the question of how time, as measured by say an atomic clock or mechanical timepiece *connects* to the underlying time, is answered.

This leads to another implication of the Cordus theory, which is that all the separate bodies in the universe, hence also clocks and frames of reference, were once synchronised in the past. The primary synchronisation was at the genesis of matter, when matter was formed from photons. There is a Cordus explanation for this asymmetrical baryogenesis too [29]. As this matter separated in the formation of the universe, so it carried its clocks with it. Thus there is a branching of times (SR: frames of reference), and this also means they can all be traced back in a family tree. Therefore Cordus only conditionally supports the SP

change the future. There is only one world-line for the universe as a whole. Therefore what is decided by the aliens stays decided, and to answer Penrose, there is no uncertainty about the future. The future of both people is not already 'fixed', instead it is simply indeterminate. The situation only looks like a paradox to an omniscient external observer (i.e. ourselves). Thus another way to dismiss the paradox is to point out it employs circular logic: it requires its observer to be in a highly preferred reference frame, free of the relativity of simultaneity, which of course is not-permitted by special relativity.

²⁰ Or at least into sufficiently close proximity that the time delays due to light-speed are insignificant.

principle of relativity of simultaneity. Cordus suggests that there is a temporal relationship between different frames of reference, that the time for each body (collection of particules) represents its cumulative journey through past space and time (i.e. world-line) and that all frames can therefore be referenced back to the primal genesis event. Not that mere inspection of the matter in any one frame reveals that journey, only the sum thereof. So Cordus suggests that the temporal relationships between inertial frames of reference are not really arbitrary, but rather unapparent. Thus the relationship between two inertial clocks is not simply a convention, though it can be for convenience if the observer is willing to accept the differences as a calibration offset. While the two separate inertial clocks may each have their own time, it is generally not possible to see what this is, so the simultaneity can in practice be set by the observer's choice. So Cordus rejects the conventionality of simultaneity in principle, but allows it in practice.

7.4 Addressing common questions about time

Time is a big puzzle to researchers and the public alike. In this section we address the implications for practitioners, which in this case are interested members of the public. Before we start, we wish to point out that the Cordus theory should be considered a conceptual solution and extended thought-experiment rather than a proven law. With that limitation in mind, here are some implications if it were to be true.

What about time travel? Can bodies travel faster than the speed of light and could this result in time flowing backward? Could spacetime be folded back on itself in a loop?

Probably no to the first. The speed of light is the local speed at which hyffons (discrete force field elements) are propagated. It is not certain that a body would be able to withstand the self-inflicted onslaught of the fabric pressure were it to travel faster than c , but even if this were possible its interactions with other matter would still require frequency cycles, hence time, for both participants. Even when the interactions are reversible (which is expected to only apply to the simplest levels and even then conditionally, see above), all this means is that there is no arrow of time. In every macroscopic situation there is irreversibility, hence a forward arrow of time.

Regarding the second, the folding of spacetime is not possible, according to the Cordus perspective. This is because there is no spacetime. Macroscopic time, in the Cordus theory is *not* a dimension at all, but a patchwork of temporal ratchets at the most fundamental level of matter. Time is a series of delayed interactions between matter, not a linear scale that can be traversed in both directions. It is not sensible, in this theory, to talk of folding time back on itself. We acknowledge that superfluids do show quantum vortices, which Cordus explains as a coherent material looped back on itself, but in that case it is possible to have a void in the middle of the vortex, whereas the patchwork of time is perfused with the fabric which cannot be voided. It is not possible to connect two regions where time flows differently, because the fabric flows through both. The fabric cannot be bent, nor can time. This means that Cordus also refutes

the QM idea that tiny wormholes make shortcuts through spacetime. Entanglement and the superluminal transport of information is not time travel, and is readily explainable with Cordus. Nor is there any need in the Cordus theory for chronology protection (the old paradox of a time-traveller killing his grandfather), because time only flows in one direction.

Is time a real fundamental property of the universe?

Yes, it is a physical effect at the particule level, the mechanism being the frequency of the particule. Yes, it is fundamental in that the existence of matter, specifically the energisation of the reactive ends, is linked to time. No, there is no master clock or universal parameter. No, in that time does not exist on its own. It is not a dimension linked to space but rather a behaviour of matter.

Is time the framework in which events take place?

No, not at least in the sense of a continuous spacetime. Yes, in that individual particules negotiate their timing (frequency, energisation) with other neighbouring particules and the fabric at large. The assembly of matter, specifically its fields, and the patchwork of negotiated interaction is the framework of time. All events occur in that framework, because all events involve interactions between particules.

Can time pass at different rates for observers in different situations? And what about time-dilation?

Yes, time is locally determined. But the different locations are linked together by negotiated discrete field elements (Cordus: hyffons) at their boundaries. Realistically those domains are very small, and large coherent volumes, e.g. vats of superfluid, are uncommon. (Where these exist the whole volume reacts as one.) Cordus explains time-dilation as the particule's hyffons having to interact with the fabric of the vacuum, which in these cases has elevated pressure density. The interaction changes the re-energisation behaviour and slows the frequency of the particule. For the particule, local time is the tick of its frequency, so time really does change when the frequency does. Therefore all the process of interaction that depend on frequency, e.g. chemical reaction with a second particule, or transport of a messenger electron/atom/molecule, or emission of a photon, or nuclear decay, will happen faster/slower relative to another frame of reference.

So there is absolute time at the particule level (or coherent domain) but it only applies locally. There is no universal time. The cosmos is filled not with one time, but a patchwork of many times at many levels.

Is time an illusion?

Yes, at least in that our cognitive construct of it emerges from deeper effects, and is fuzzy, being stitched together in the mind as an apparently smooth and continuous dimension. No, in the sense that time corresponds to the frequency oscillations of matter, and these exist while matter exists.

Are there alternative realities?

If there are many worlds or parallel universes, there is every reason to expect that –by definition- they will be inaccessible to the present one, and therefore unknowable. Those are metaphysical ideas, like religion in being beyond physics, and Cordus cannot confirm or disprove them. Yet Cordus can say that there is no *need* for alternative realities. Cordus refutes the QM concept of many futures (temporal superposition) and provides a theory for time in which there need be only one reality in which everything that happens simply stays happened.

Is time the passage from low to high entropy?

Not quite: entropy is a related but different effect to time. The arrow of time arises at the level where decoherence results in irreversibility in the interaction between particules. While time is the frequency ticks of particules, the irreversibility of interactions contributes to the *arrow* of time. The same irreversibility creates entropy. But time and entropy are not the same effect, even if they have a common cause. Irreversibility is quantified by entropy, and also drives the local ratchets for the arrow of time.

Why do the laws of physics treat the past and future the same?

This is because quantum mechanics does not include entropy, in turn because it assumes that matter is always coherent (hence reversible interactions). Cordus shows why QM's assumption is incorrect, and explains why and where coherence breaks down. Likewise classical mechanics is also symmetrical regarding time, if losses are ignored. The arrow is only applied to time when irreversibility arises.

Why does the human brain not 'remember' the future?

Time is a one-way effect. There is no future that is simultaneous with the present and the past. Cordus specifically refutes the idea that an object can simultaneously be in multiple futures, i.e. temporal superposition. The Cordus theory rejects the idea that the future already exists, or that time is a dimension, and instead asserts that the future depends on how the complex and irreversible *now* evolves.

Which perspective of time is correct: the absolute clock of quantum mechanics or the spacetime of general relativity?

Neither, but in some ways both are adequate for their purposes. According to Cordus, time at the fundamental level is created by the local frequency of oscillation of the particule, and the arrow is driven by irreversibility. Thus time is locally generated, and Cordus suggests the QM idea of an absolute clock is incorrect.²¹ Also, Cordus suggests that time is a patchwork at the cosmos scale, not a continuous spacetime, thereby not accepting this feature of GR either. However both QM and GR are approximately correct, at least at the level of detail that concerns them.

²¹ If the wave-functions of QM were rewritten in terms of the de Broglie frequency for the particule, rather than probability in absolute time, then QM and Cordus might be closer. A secondary effect is that Cordus also suggests that the simple presence of an observer does not collapse the wave-function or influence the outcome of an experiment, unless that observer was bonded in a coherent way to the experiment -which Cordus suggests is practically impossible to achieve- or imposes fields/forces on the system being measured.

Cordus provides a more primitive mechanics for time that accommodates the thoroughly different models of QM and GR.

Where did time come from?

To the level to which Cordus can penetrate, time is a consequence of the frequency oscillations of particules. Its rate is thus determined by the mass of the particule, in turn how it is assembled and from what subcomponents. In that sense even massless particules (photon, neutrino) have frequency and therefore time. However the forward arrow of time arises where coherence lets off and decoherence starts. This discontinuity in the physics of time occurs at different levels of assembly depending on temperature and homogeneity. Time therefore comes from the frequency oscillation of matter, which in turn comes from the primal photon(s) at genesis. Thus time started when the universe started.

Will time end, and when?

Time is part of matter, and shares the same origins and fate. Therefore time as we know it will cease when the universe does. This also means that there is no time (as we know it) outside the universe. This would mean that there is no time in the void into which the universe is expanding. Likewise for a being outside the universe (God) there need be no time either.

Is time a dimension?

No, it is not a dimension: it is neither smooth nor infinitely sub-divisible. It is not a ratio variable. It only looks that way when viewed from a sufficiently high level of assembly, hence the approximations of the classical mechanics. The concept of spacetime is also an approximation. In the Cordus view, time is more like a patchwork of cause-and-effect ratchets between sub-microscopic domains.

7.5 Implications for further research

The Cordus conjecture makes specific predictions that are unorthodox and thus lend themselves to testing and falsification. For example, within this paper are specific predictions about how time flows in coherent bodies such as superfluids. It might be possible to test these predictions, and thereby test the larger conjecture.

Other research implications are that there could be yet deeper mechanics to explore. Specifically in the case of time is the question of what the mechanism might be for frequency in the particule. Cordus currently explains it as dynamic energy oscillation between the field structures at the two reactive ends, but undoubtedly there is more to it than this.

8 Conclusions

Applying the Cordus conjecture yields a novel alternative conceptualisation of time. According to this conceptual theory, time originates at several levels. At its most basic level time originates with the frequency cycles of the particules of matter and photons. Specifically, the ticks of time are the frequency oscillations of particules. Cordus provides a specific internal structure for particules, hence a physical explanation for

frequency. The rate of time is thus determined by the mass of the particule, in turn how it is assembled and from what subcomponents. The local conditions and external environment, specifically relativistic velocity, acceleration, and high gravitation, affect the energisation process of the reactive ends. This effects the frequency of the particule, and thus the local time, hence time-dilation. Thus time is locally generated, and Cordus rejects the idea of an absolute or universal clock. Time therefore comes from the frequency oscillation of matter, which in turn comes from the primal photon(s) at genesis. Thus time started when the universe started, and will end with it too.

However the ticks of time are not the same as the arrow of time. The forward arrow is only applied to time at the level where irreversibility arises. This is where coherence lets off and decoherence starts. This discontinuity in the physics of time occurs at different levels of assembly depending on temperature and homogeneity, but is well before the macroscopic or even cellular level. Cordus explains how the irreversibility arises in the time-delay that is introduced (frequency ticks required) when two bodies of matter interact. This explanation applies whether those volumes are decoherent or even independently coherent. Irreversibility arises because it is statistically impossible to return all particules in the system to their original positions and states. The fabric, which comprises the discrete field forces (hyffons) of all the other particules in the accessible universe, adds complexity to the interaction of even the simplest assembly of particules. Therefore entropy, irreversibility, decoherence, cause-and-effect, and the arrow of time all arise at the same point.

There is a connectedness of phenomena that are at different geometric locations, and this applies between macroscopic objects and at the small scale. A phenomenon that occurs in one volume is communicated via photons, or massy particules, or fields, to other matter around it. This communication applies positional constraints on the recipient, hence temporal cause-and-effect. It is not a master clock that accomplishes this, nor does it require continuity of spacetime. The piece-wise communication between volumes of matter (whether coherent or not) achieves the macroscopic effect of time. Cordus does not accept the temporal superposition of QM, hence also refuting the alternative-realities and many-worlds idea of QM. It also refutes the GR idea of spacetime, instead suggesting that macroscopic time is a patchwork of temporal ratchets, not a continuous dimension. Hence Cordus also rejects the idea of time-travel via folded spacetime, or the wormhole idea of QM.

Cordus offers an answer to the question of whether the absolute clock of quantum mechanics or the spacetime of general relativity is correct. Neither is, but both are adequate approximations for their purposes. Cordus provides a more basic concept of time from which QM and GR emerge as different approximations. At the level of organic life, time is based in chemistry, specifically the delay introduced by the irreversible interaction of molecules. It takes chemical time for us to accomplish

anything, even thought. Thus human perceptions of time are a construct founded on a real physical principle of temporal causality.

Thus the Cordus conjecture delivers a new theory for time, one that accommodates the existing perspectives of QM, SR and GR, but also suggests they are approximations of a deeper reality. This is consistent with what Smolin expected [30]:

Quantum mechanics must then be an approximate description of a more fundamental physical theory. There must then be hidden variables, which are averaged over to derive the approximate, probabilistic description which is quantum theory [and these] hidden variables must be non-local.

The Cordus time theory addresses the ontology of time at the fundamental level, explains where and how the arrow-of-time arises, and describes how time might operate at the cosmological level.

The successes with the Cordus conjecture show that non-local hidden-variable solutions have merit, despite their rejection by orthodox physics. Specifically, the wider Cordus theory shows that it is possible to envisage and design a NLHV solution that circumvents the Bell-type inequalities, and has high explanatory power across many physical phenomena. In particular, we have shown that questions about time can be answered at the next deeper level of physics, and we have given an example of what that physics might look like and its implications for time.

END OF MAIN PAPER [31]

A Appendix: Time lemmas

The following assumptions are built into or emerge from this Cordus theory, and expressed as lemmas. The lemmas represent the Cordus mechanics and are a mechanism to ensure logical consistency within the theory. They originate from, or are designed to complement, other Cordus concepts described in Appendix B.

E.4 Time Lemma

- E.4.1 Time depends on the level at which the assembly of matter occurs, being fastest for individual particules, and slowest for more complex assemblies (later identified as decoherent bodies bonded by electric-magnetic-gravitational-bonding forces).
- E.4.2 Fundamental Time, at the level of the individual particule (e.g. electron), is the frequency of the re-energisation cycles of its two reactive ends.
- E.4.3 Fabric time is the mutual interconnectedness of matter particules spread over three-dimensional space. This occurs via the fabric, comprising discrete field forces (hyffons) for electric-magnetic-gravitational interaction. Not strictly a time, this is rather a coordination of events across space.
- E.4.4 Coherent assembly time is the common frequency cycle of re-energisation of the particules within a coherent domain of matter.

- E.4.5 Decoherent assembly time is the tick of interactions within an aggregate body of coherent and decoherent sub-bodies. This tick of time is much slower than the fundamental time, and derives from individual particles responding as they can to the rain of field forces.
- E.4.6 Macroscopic bodies invariably have decoherent relationships between them. Such bodies, regardless of whether they are internally governed by coherent or decoherent relationships (bonds), interact inelastically with their environment, in that such bodies do not return to precisely their initial states. Inability for one body to return thereby means that all the other bodies in the accessible universe cannot either, because the fabric of background field hyffons has been changed.
- E.4.7 Decoherent assembly time is irreversible, hence the arrow of time arises at this level. This is because the interaction between subassemblies is practically irreversible due to intervening changes, propagation delays, and the complexity of large number of participating particles. This is also where and why entropy arises.
- E.4.8 Organic Life Time, at the level of an individual cell, consists of the fuzzy aggregation of the discrete fields of the many individual coherent particles (electrons, atoms, molecules) and decoherent sub-components (clumps of molecules, organelles). 'Fuzzy' because the discrete field hyffons are not individually distinct. Chemical transport within the cell occurs as and when the sub-components are able to interact. Thus the cell takes much longer to achieve anything (more frequency ticks) than a simple sum of the times required by the coherent subcomponents.
- E.4.9 Cognitive time, or the human perception of time, is a cognitive construct of the order in which we experience phenomena, based in turn on a neural representation of chemical time, and the arrow of time (irreversibility), both of which arise at a deeper level. The coordination provided by the fabric ensures that there is a consistency of experience between two people, hence personal interaction is a real common experience, and time is perceived as universal.
- E.4.10 It is not a master clock that accomplishes the temporal connectedness of phenomena that are at different geometric locations, nor does it require continuity of spacetime per se. The piece-wise communication, via discrete field interactions of the fabric, between adjacent volumes of space (matter and fabric) applies spatial consistency to time. There is no universal time. The cosmos is filled not with one time, but a patchwork of many times.

B Appendix: The theoretical framework of the Cordus conjecture

Main features

The cordus particle theory is characterised by two tightly-integrated designs. One covers the proposed internal structure of the particle,

specifically the two reactive ends and fibril. The other describes the discrete field structures, hence the hyff, hyff emission directions (HEDs) and hyffon pulses. These two designs are linked by the logical necessity for the reactive ends to emit the discrete fields. The Cordus conjecture shows that if matter and photons had the proposed structures, then a large number of fundamental phenomena in physics could be explained, including many that are otherwise inexplicable. These explanations are physically natural, and logically consistent with each other, so the conjecture as a whole has good coherence.

More details of the Cordus conjecture are available elsewhere, including descriptions of the original basic idea [32], particule structure [15], collapse of photon to specific location (e.g. double slit and interferometers) [33], superposition [15] [22], frequency [34] [18], entanglement and the superluminal transport of information [35], fields [24, 25], strong force [36], unification of forces [37], photon [32], matter [38] [36], fabric [26], coherence [33] [21], irreversibility and decoherence [21, 39], entropy [40], superconductors, superfluids and quantum vortices [22], HED notation [41], electrical, magnetism, and gravitation fields [37, 38].

The Cordus concept of discrete field structures, especially hyff emission directions, has wide applicability. The mutual negotiation between interacting particules, based on shared geometric timing constraints, and this synchronicity is proposed as the mechanism for the strong force. It also explains the spatial inconsistencies of that force [20]. The HED concept has been used to create a new principle for handedness, in the energisation sequence of three orthogonal discrete field elements. Thus also the Cordus conjecture proposes that the fundamental difference between matter and antimatter is the hand of their discrete fields [42]. This concept has been used to anticipate the mechanics for the annihilation process [43]. Field considerations have also been used to design a theory of the internal structure of the neutrino, including an explanation of its behaviour [44]. Explanations are provided for neutron decay [23]. This line of thinking also gives rise to an explanation for asymmetrical baryogenesis [29].

What is coherence?

Cordus permits a more specific definition of coherence and superposition than is possible from within the OD point construct of QM. From the Cordus perspective, superposition is simply that the cordus particule is actually physically oscillating between two positions: the geometric locations of the reactive ends at the end of their span. The cordus particle (e.g. photon cordus) collapses to one of these ends when it is grounded. Likewise coherence, from the Cordus perspective, is when all the particules, which may be photons, electrons, protons, and possibly atoms & molecules, etc., have synchronised frequencies and phases thereof. This also involves the sharing of hyff emission directions (HEDs).

According to this theory, coherence is a special state of assembly where the particules provide for mutual preservation of the twin locations of

each others' reactive end: when any one particule is energised at its one reactive end, the position of its other dormant reactive end is filled by the active end of another particule. Coherence is, according to Cordus, best understood as an ordered complementary frequency state synchronisation (CoFS) between two or more particules.

For materials with a coherent structure, the effect of an externally imposed change is communicated to neighbouring internal components at the next frequency cycle. For assemblies with high purity, this may be fast indeed, hence second sound in superfluids, and rapid electron transmission across biological molecules.²² Hence also the successes in putting molecules into geometric superposition. Thus communication within atoms and molecules is rapid, being able to take advantage of the internal frequency network.

What is decoherence?

Cordus anticipates three mechanisms for decoherence [21]. First, a coherent material cannot accept internal shear velocity. Second, higher temperatures lead to decoherence because phonons (internal thermal vibrations) disturb the stability. Third, more complex assemblies of matter are harder to put into coherence, and the complicating factors are the number of components in the assembly, and the variety of species (simplicity and purity).

What is entropy?

Cordus explains entropy as a spatial and temporal dilution of energy [40]. Thus an atom that has surplus energy can dispense it in five main forms: electron orbital change (including bonding), electron ejection, photon ejection, electron flow (plasmons), and phonon propagation. If phonons, then another atom some distance away receive some of the energy and will likewise use what it can and dispense with the rest. That remote atom might emit a photon for example. Even if that photon was sent straight back to the original atom (which is not generally the case), there would still be less energy in the feedback loop because of the phonon dilution in the bulk, and the time required for the photon flight. Thus the individual mechanisms are all reversible (elastic), but the system as a whole is not, and we suggest this is what creates entropy.

Both photons and phonons tend to be dispersed out into the surrounding space or material (respectively), and this dilution of the original energy is the primary mechanism for thermodynamic irreversibility and entropy. The geometric and micro-structural complexity of the matter accessible to the photons and phonons introduces so many dilution paths that it is extremely unlikely that the energy fragments will spontaneously recombine. Geometric separation is another contributory factor: when the matter separates or radiates photons across space, then the dilution is further increased and the number of paths reduced by which the energy can come back together. The enormous radiative loss of photons from

²² For a descriptive overview of quantum biology, and applications to odour reception, electron transfer in ATP, & photosynthesis, see Brooks, M., The weirdness inside us. New Scientist, 2011. 2832(1 October 2011): p. 34-37.

stars contributes to entropy, because that energy cannot realistically all be recovered after it has travelled billions of years and stopped in our eye, and even if it were reflected back it would be more billions of years to travel back. In the meantime space expands, which adds to the delay. Thus the expansion of space in the universe further contributes to entropy.

Geometric separation of matter causes the photon travelling between them to arrive late, the more so if it involves transmission through denser material. Thus the energy is not delivered at the time it might have been, but is instead postponed into the future. If that postponement is indefinite, it takes energy out of the system. This is another barrier to recombining the original energy, and thus another contribution to entropy.

Not only is the energy delayed, but so too is any information carried by the photon. Furthermore, the Cordus theory for transmission of discrete field force-elements (hyffons) [37, 38, 45] suggests that these too travel at the speed of light. Thus information about the strength and direction of the fields of the remote particule only arrives at the basal particule after some time. The basal particule cannot respond to external fields until it receives them. This contributes a delay to the exchange of information between decoherent objects.

References

1. Einstein, A., B. Podolsky, and N. Rosen, *Can Quantum-Mechanical Description of Physical Reality Be Considered Complete?* Physical Review, 1935. **47**(10): p. 777. Available from: <http://link.aps.org/doi/10.1103/PhysRev.47.777>.
2. Bell, J.S., *On the Einstein Podolsky Rosen Paradox*. Physics, 1964. **1**(3): p. 195-200.
3. Leggett, A., *Nonlocal Hidden-Variable Theories and Quantum Mechanics: An Incompatibility Theorem*. Foundations of Physics, 2003. **33**(10): p. 1469-1493. DOI: 10.1023/a:1026096313729. Available from: <http://dx.doi.org/10.1023/A:1026096313729>.
4. De Zela, F., *A non-local hidden-variable model that violates Leggett-type inequalities*. Journal of Physics A: Mathematical and Theoretical, 2008. **41**(50): p. 505301. Available from: <http://stacks.iop.org/1751-8121/41/i=50/a=505301>.
5. Laudisa, F., *Non-Local Realistic Theories and the Scope of the Bell Theorem*. Foundations of Physics, 2008. **38**(12): p. 1110-1132. DOI: 10.1007/s10701-008-9255-8. Available from: <http://dx.doi.org/10.1007/s10701-008-9255-8> <http://link.springer.com/article/10.1007/s10701-008-9255-8>.
6. Groblacher, S., et al., *An experimental test of non-local realism*. Nature, 2007. **446**(7138): p. 871-875. DOI: 10.1038/nature05677.
7. Jejjala, V., et al., *Modeling time's arrow*. Entropy, 2012. **14**(4): p. 614-29. DOI: 10.3390/e14040614. Available from: <http://dx.doi.org/10.3390/e14040614>.
8. Aiello, M., M. Castagnino, and O. Lombardi, *The arrow of time: from universe time-asymmetry to local irreversible processes*. Foundations of Physics, 2008. **38**(3): p. 257-92. DOI: 10.1007/s10701-007-9202-0. Available from: <http://dx.doi.org/10.1007/s10701-007-9202-0>.

9. Campisi, M. and P. Hanggi, *Fluctuation, Dissipation and the Arrow of Time*. Entropy, 2011. **13**(12): p. 2024-35. DOI: 10.3390/e13122024. Available from: <http://dx.doi.org/10.3390/e13122024>.
10. Caticha, A., *Entropic Dynamics, time and Quantum Theory*. Journal of Physics A: Mathematical and Theoretical, 2011. **44**(22): p. 225303 (23 pp.). DOI: 10.1088/1751-8113/44/22/225303. Available from: <http://dx.doi.org/10.1088/1751-8113/44/22/225303>.
11. Mainzer, K., *The emergence of temporal structures in dynamical system*. Foundations of Physics, 2010. **40**(9-10): p. 1638-50. DOI: 10.1007/s10701-010-9451-1. Available from: <http://dx.doi.org/10.1007/s10701-010-9451-1>.
12. Penrose, R., *Singularities and time-asymmetry*, in *General Relativity: An Einstein Centenary Survey*, S.W. Hawking and W. Israel, Editors. 1979, Cambridge University Press. p. 581-638.
13. Lyre, H., *Time in Philosophy of Physics: The Central Issues*. Physics and Philosophy, 2008(2008): p. 1-23. DOI: <http://hdl.handle.net/2003/25146>. Available from: <http://hdl.handle.net/2003/25146>.
14. Hasker, W., *Divine knowledge and human freedom*, in *The Oxford Handbook of Free Will*, R. Kane, Editor. 2011, Oxford University Press. p. 39-54.
15. Pons, D.J., Pons, Arion. D., Pons, Ariel. M., & Pons, Aiden. J., *Wave-particle duality: A conceptual solution from the cordus conjecture*. Physics Essays, 2012. **25**(1): p. 132-140. DOI: <http://physicsessays.org/doi/abs/10.4006/0836-1398-25.1.132>. Available from: <http://physicsessays.org/doi/abs/10.4006/0836-1398-25.1.132>.
16. Pons, D.J., A. Pons, D., and A. Pons, J. (2012) *Bundles of Nothingness: Unravelling the Zero-Dimensional Particle Premise of Fundamental Physics*. Foundational Questions Institute: Essay Contest 2012: Questioning the Foundations p. 1-12. Available from: <http://fqxi.org/community/forum/topic/1334>.
17. de Broglie, L., *Recherches sur la théorie des quanta (Researches on the quantum theory)*. Annales de Physique., 1925. **3**(10).
18. Pons, D.J., Pons, Arion. D., Pons, Ariel. M., & Pons, Aiden. J. (2011) *Frequency. (Cordus optics Part 2.1)* viXra **1104.0019**, p. 1-10, DOI: vixra.org/abs/1104.0019. Available from: <http://vixra.org/pdf/1104.0019v1.pdf>.
19. FIPS. *Integration Definition for Function Modeling (IDEF0)*. 1993 12 Aug 2003]; Available from: <http://www.itl.nist.gov/fipspubs/idef02.doc>.
20. Pons, D.J. and A.D. Pons (2012) *Strong interaction reconceptualised: Synchronous interlocking of discrete field elements*. vixra (1208.0030), p. 1-22, DOI: <http://vixra.org/abs/1208.0030>. Available from: <http://vixra.org/pdf/1208.0030v1.pdf>.
21. Pons, D.J. (2012) *Limits of Coherence: Where and Why is the Transition to Discoherence?* vixra **1201.0043**, p. 1-12. Available from: <http://vixra.org/abs/1201.0043>
22. Pons, D.J., Pons, Arion. D., Pons, Ariel. M., & Pons, Aiden. J. (2011) *Special states of matter. (Cordus matter Part 3.4)* viXra **1104.0025**, p. 1-12, DOI: vixra.org/abs/1104.0025. Available from: <http://vixra.org/pdf/1104.0025v1.pdf>.
23. Pons, D.J. (2011) *Stability and decay: Mechanisms for stability and initiators of decay in the neutron*. vixra **1112.0002**, p. 1-17. Available from: <http://vixra.org/abs/1112.0002>.
24. Pons, D.J., Pons, Arion. D., Pons, Ariel. M., & Pons, Aiden. J. (2011) *Electromagnetism. (Cordus in extremis Part 4.1)* viXra **1104.0027**, p. 1-17, DOI: vixra.org/abs/1104.0027. Available from: <http://vixra.org/pdf/1104.0027v1.pdf>.

25. Pons, D.J., Pons, Arion. D., Pons, Ariel. M., & Pons, Aiden. J. (2011) *Gravitation, Mass and Time. (Cordus in extremis Part 4.3)* viXra **1104.0029**, p. 1-14, DOI: [vixra.org/abs/1104.0029](https://arxiv.org/abs/1104.0029). Available from: <http://vixra.org/pdf/1104.0029v1.pdf>.
26. Pons, D.J., Pons, Arion. D., Pons, Ariel. M., & Pons, Aiden. J. (2011) *Fabric of the universe. (Cordus in extremis Part 4.2)* viXra **1104.0028**, p. 1-8, DOI: [vixra.org/abs/1104.0028](https://arxiv.org/abs/1104.0028). Available from: <http://vixra.org/pdf/1104.0028v1.pdf>.
27. Penrose, R., *The emperor's new mind*. 1989: Oxford University Press.
28. Einstein, A., *Relativity: The special and general theory*. 1920, New York: Holt.
29. Pons, D.J., A. Pons, D., and A. Pons, J. (2011) *The preponderance of matter: Asymmetrical genesis via the antineutrino route*. viXra **1111.0035**, p. 1-19, DOI: [http://vixra.org/abs/1111.0035](https://arxiv.org/abs/1111.0035). Available from: <http://vixra.org/pdf/1111.0035v1.pdf>.
30. Smolin, L. *What Do You Believe Is True Even Though You Cannot Prove It?* 2005 3 August 2011]; Available from: http://www.edge.org/q2005/q05_5.html#smolin.
31. **References-for-Appendices-below-here.**
32. Pons, D.J., Pons, Arion. D., Pons, Ariel. M., & Pons, Aiden. J. (2011) *Quis es tu photon? Cordus Conjecture: Part 1.1* viXra **1104.0016**, p. 1-8, DOI: [vixra.org/pdf/1104.0016](https://arxiv.org/abs/1104.0016). Available from: <http://vixra.org/pdf/1104.0016v1.pdf>.
33. Pons, D.J., Pons, Arion. D., Pons, Ariel. M., & Pons, Aiden. J. (2011) *Special states of matter. Cordus matter: Part 3.4* viXra **1104.0025**, p. 1-12, DOI: [vixra.org/abs/1104.0025](https://arxiv.org/abs/1104.0025). Available from: <http://vixra.org/pdf/1104.0025v1.pdf>.
34. Pons, D.J., Pons, Arion. D., Pons, Ariel. M., & Pons, Aiden. J. (2011) *Frequency. Cordus optics: Part 2.1* viXra **1104.0019**, p. 1-10, DOI: [vixra.org/abs/1104.0019](https://arxiv.org/abs/1104.0019). Available from: <http://vixra.org/pdf/1104.0019v1.pdf>.
35. Pons, D.J., Pons, Arion. D., Pons, Ariel. M., & Pons, Aiden. J. (2011) *Wider Locality. (Cordus matter Part 3.1)*. viXra **1104.0022**, p. 1-7, DOI: [vixra.org/abs/1104.0022](https://arxiv.org/abs/1104.0022). Available from: <http://vixra.org/pdf/1104.0022v1.pdf>.
36. Pons, D.J., Pons, Arion. D., Pons, Ariel. M., & Pons, Aiden. J. (2011) *Quarks. Cordus in extremis: Part 4.4* viXra **1104.0030**, p. 1-15, DOI: [vixra.org/abs/1104.0030](https://arxiv.org/abs/1104.0030). Available from: <http://vixra.org/pdf/1104.0030v1.pdf>.
37. Pons, D.J., Pons, Arion. D., Pons, Ariel. M., & Pons, Aiden. J. (2011) *Gravitation, Mass and Time. Cordus in extremis: Part 4.3* viXra **1104.0029**, p. 1-14, DOI: [vixra.org/abs/1104.0029](https://arxiv.org/abs/1104.0029). Available from: <http://vixra.org/pdf/1104.0029v1.pdf>.
38. Pons, D.J., Pons, Arion. D., Pons, Ariel. M., & Pons, Aiden. J. (2011) *Electromagnetism. Cordus in extremis: Part 4.1* viXra **1104.0027**, p. 1-17, DOI: [vixra.org/abs/1104.0027](https://arxiv.org/abs/1104.0027). Available from: <http://vixra.org/pdf/1104.0027v1.pdf>.
39. Pons, D.J., Pons, Arion. D., Pons, Ariel. M., & Pons, Aiden. J. (2011) *Why does quantum mechanics not scale up?* viXra **1107.0019**, p. 1-18, DOI: [vixra.org/abs/1107.0019](https://arxiv.org/abs/1107.0019). Available from: <http://vixra.org/pdf/1107.0019v1.pdf>.
40. Pons, D.J., Pons, Arion. D., Pons, Ariel. M., & Pons, Aiden. J. (2011) *Energy cycles within matter. Cordus matter: Part 3.3* viXra **1104.0024**, p. 1-7, DOI: [vixra.org/abs/1104.0024](https://arxiv.org/abs/1104.0024). Available from: <http://vixra.org/pdf/1104.0024v1.pdf>.

41. Pons, D.J. (2011) *Cordus process diagrams: Symbolic representation of annihilation mechanics*. viXra **1109.0068**, p. 1-14, DOI: vixra.org/abs/1109.0068. Available from: <http://vixra.org/pdf/1109.0068v1.pdf>.
42. Pons, D.J. (2011) *Mirror images: Cordus reconceptualisation of Matter and Antimatter*. viXra **1109.0009**, p. 1-15, DOI: vixra.org/abs/1109.0009. Available from: <http://vixra.org/pdf/1109.0009v1.pdf>.
43. Pons, D.J. (2011) *Annihilation mechanisms: Intermediate processes in the conversion of electron and antielectron into photons* viXra **1109.0047**, p. 1-21, DOI: vixra.org/abs/1109.0047. Available from: <http://vixra.org/pdf/1109.0047v1.pdf>.
44. Pons, D.J. (2011) *Structure of the neutrino and antineutrino*. viXra **1111.0022** p. 1-27, DOI: vixra.org/abs/1111.0022. Available from: <http://vixra.org/pdf/1111.0022v1.pdf>.
45. Pons, D.J., Pons, Arion. D., Pons, Ariel. M., & Pons, Aiden. J. (2011) *Fabric of the universe. Cordus in extremis: Part 4.2* viXra **1104.0028**, p. 1-8, DOI: vixra.org/abs/1104.0028. Available from: <http://vixra.org/pdf/1104.0028v1.pdf>.